

# MACOMB COUNTY DEPARTMENT OF ROADS

## TRAFFIC OPERATIONS CENTER

*"To provide and maintain a reliable real-time traffic operations system, in coordination with county stakeholders, that enables a safe, efficient, and informative travel experience."  
- MCDR TOC Mission Statement*

## PERFORMANCE MEASURES



## February 2023

**AECOM**

**WSP**

**INTEGRAL  
BLUE**



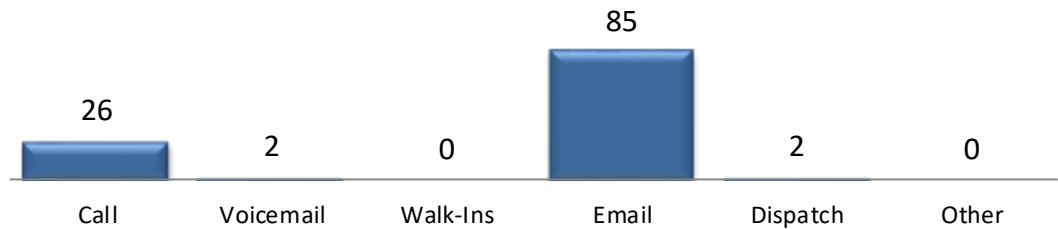
**John Abraham, PhD, PE, PTOE**  
Director of Traffic & Operations  
Macomb County Department of Roads  
117 S Groesbeck Hwy  
Mount Clemens, MI 48043  
586-463-8671  
[JAbraham@RCMCWeb.org](mailto:JAbraham@RCMCWeb.org)

# MONTHLY TOC HIGHLIGHT

On February 22<sup>nd</sup>, Macomb County residents experienced an ice storm that left more than 600,000 Michigan residents without power, including widespread power outages in Macomb County. The Macomb County Department of Roads (MCDR) Traffic Operations Center (TOC) worked diligently throughout this significant weather event to identify and remedy more than 70 traffic signal-related issues resulting from the storm. In working with MCDR's electrical department, normal operations were restored to nearly all affected traffic signals within 72 hours of the initial outage. These efforts helped maintain safety and mobility for Macomb County's traveling public.

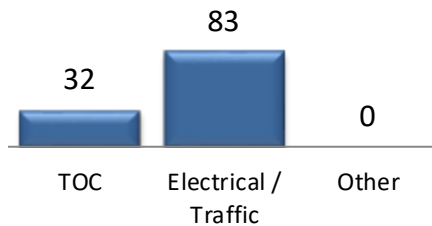
## OPENED SERVICE REQUESTS

Service Request Source



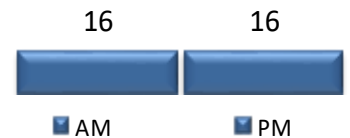
In the month of February, **115** incoming requests regarding traffic signals were received.

Service Request by Dept.

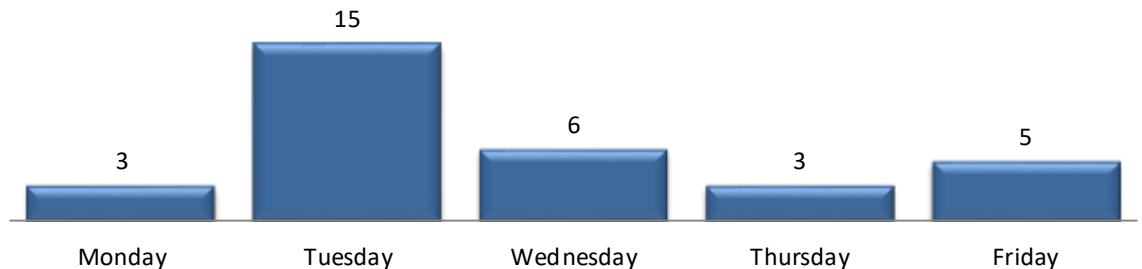


In the month of February, TOC engineers closed **38** service requests within an average of **6** business days.

TOC Service Requests Opened by Time of Day



TOC Service Request Opened Per Day of Week



TRAFFIC OPERATIONS

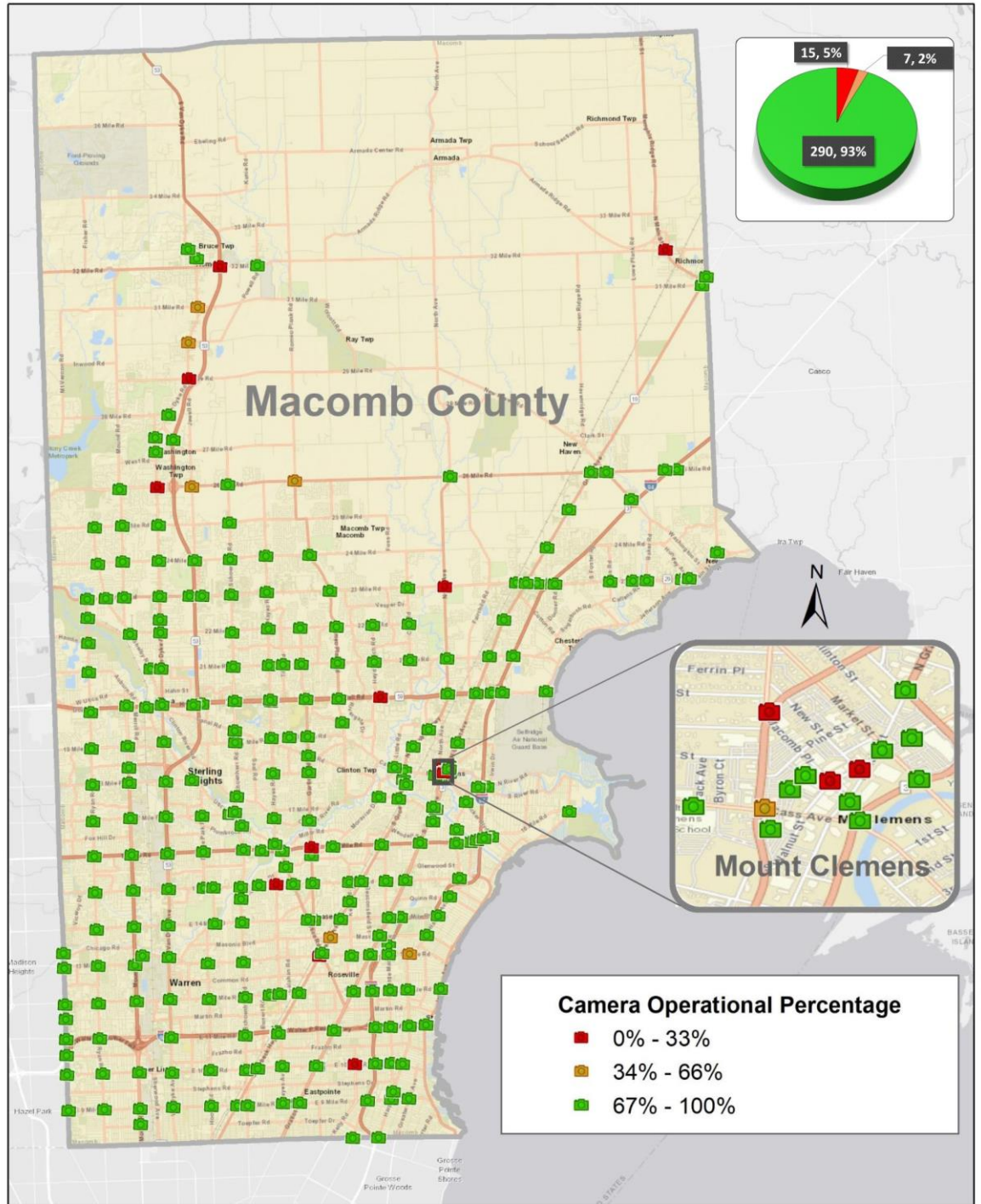
February 2023



# CCTV TRAFFIC CAMERA SUMMARY

## CAMERA COVERAGE

February 2023



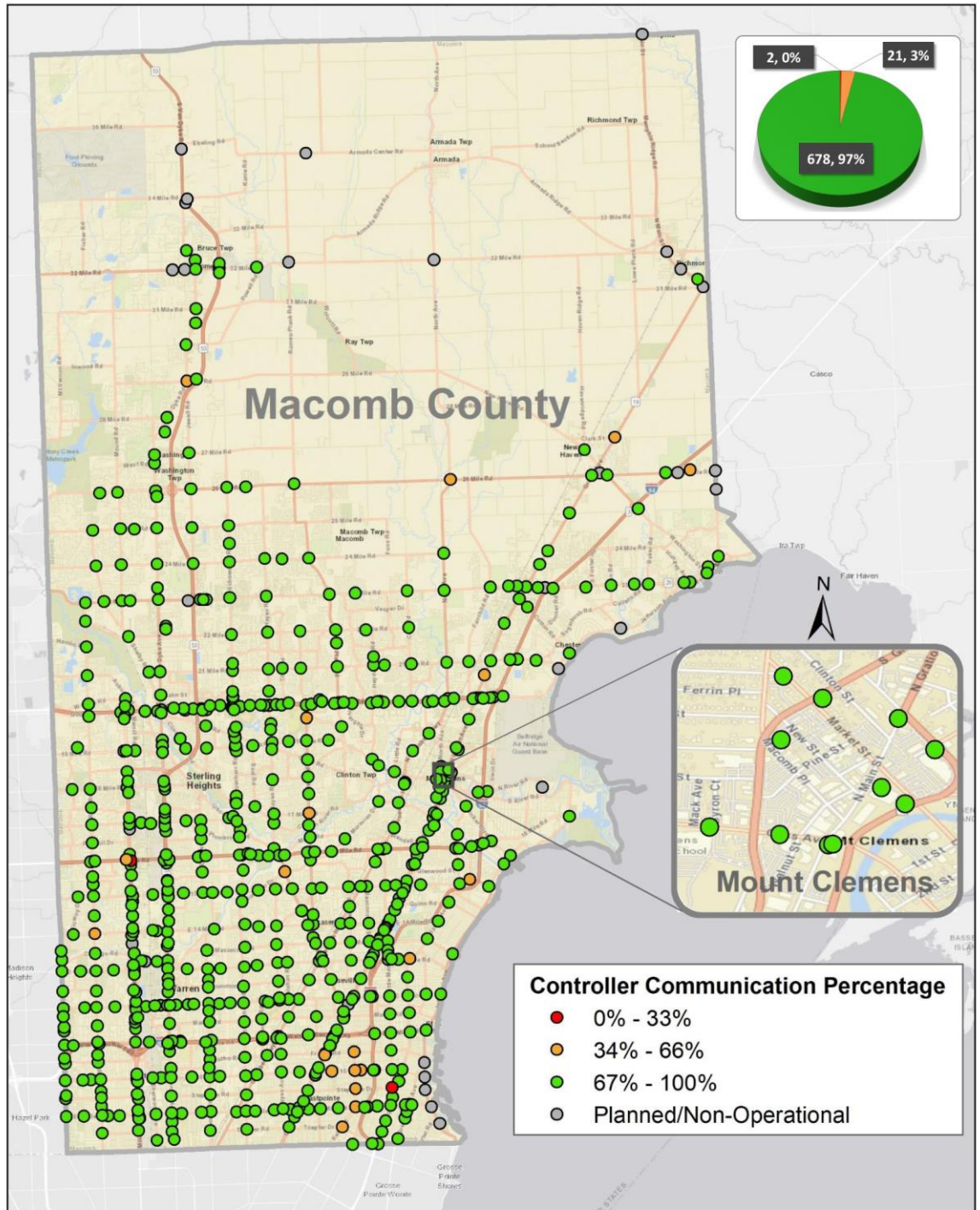
The map above represents the CCTV camera operational percentages for the month of February 2023.



# REGIONAL COMMUNICATIONS SUMMARY

## ITS MAINTENANCE

February 2023



The map above represents the communication availability percentages of Traffic Signal Controllers for the month of February 2023.



# HIGH IMPACT CORRIDOR COMMUNICATIONS AVAILABILITY

Corridor	Current Month	Previous Month	Change
9 Mile	96%	98%	-2%
14 Mile	96%	92%	4%
15 Mile	99%	99%	0%
Metro Parkway	98%	99%	-1%
Hall Rd(M-59)	99%	99%	0%
Dequindre	99%	97%	2%
Ryan	97%	95%	2%
Mound	99%	98%	1%
Hoover	99%	99%	0%
Schoenherr	99%	99%	0%
Hayes	99%	99%	0%
Gratiot(M-3)	96%	99%	-3%
Harper	95%	98%	-3%

*The table above represents a one-time monthly snapshot of communications along major corridors in Macomb County.*

## FIELD WORK

*85 sites visited by the IT/ITS Maintenance Technicians. 11 sites visited by the combined efforts of the IT/ITS Maintenance and MCDR Electrical crews.*

## SIGNAL TIMING CHANGES

*Traffic signal changes performed by TOC engineers*

Time of Signal change	Location	Intersection	Reason for signal change
02/01/2023 17:35	15 Mile Road/Schoenherr	396	Incident (Crash)
02/02/2023 7:53	14 Mile Road/Schoenherr	339	Incident (Congestion)
02/06/2023 14:25	Garfield/21 Mile Road	789	Construction
02/07/2023 7:32	14 Mile Road/Schoenherr	339	Incident (Congestion)
02/08/2023 15:15	26 Mile/Schoenherr	947	Construction
02/13/2023 6:41	15 Mile Road/Harper/Klix	210	Incident (Crash)
02/13/2023 16:28	12 Mile Road/Van Dyke	322	Construction
02/13/2023 16:35	Hoover/12 Mile Road	236	Congestion
02/14/2023 8:36	New Haven Road (M-19)/26 Mile Road	720	Construction
02/14/2023 10:12	Gratiot (M-3)/24 Mile Road	565	Service Request



# SIGNAL TIMING CHANGES CONTINUED

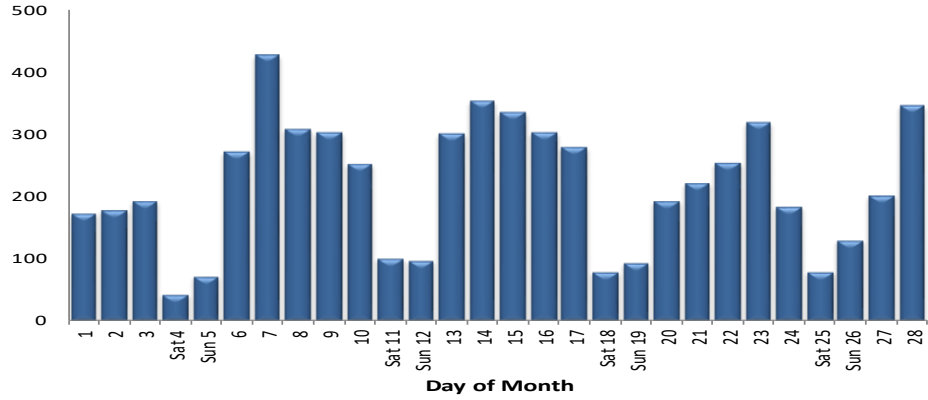
Time of Signal change	Location	Intersection	Reason for signal change
02/15/2023 9:05	15 Mile Road/Maple Lane	405	Incident (Crash)
02/15/2023 12:42	Van Dyke NB (M-53)/Crossover S of Metro Parkway	670	Incident (Crash)
02/15/2023 17:42	12 Mile Road/Crossover 439' W. of Van Dyke	450	Construction
02/15/2023 17:42	12 Mile Road/Crossover 364' E. of Van Dyke	451	Construction
02/15/2023 18:00	Schoenherr/25 Mile Road	296	Service Request
02/16/2023 13:51	Crocker/Metropolitan Parkway	92	Incident (Crash)
02/16/2023 9:33	New Haven Road (M-19)/26 Mile Road	720	Incident (Congestion)
02/16/2023 10:41	Mound SB/Crossover 800' N. Metro Parkway	723	Incident (Crash)
02/16/2023 9:33	I-94 WB Off Ramp/26 Mile Road	852	Incident (Crash)
02/17/2023 8:04	Metropolitan Parkway EB/Crossover 340' W of Schoenherr	638	Incident (Crash)
02/20/2023 15:00	12 Mile/Little Mack	257	Construction
02/28/2023 8:01	Gratiot (M-3)/24 Mile Road	565	Incident (Crash)

**MAINTENANCE**

February 2023

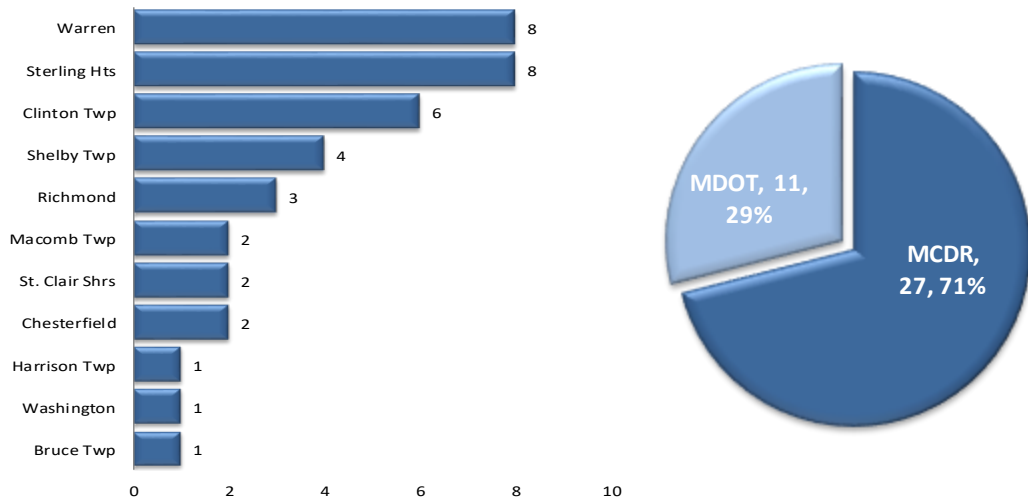


# MCDR WEBSITE HITS



A total of **6,049** hits were accrued at <http://roads.macombgov.org/>.

## CLOSED SERVICE REQUESTS PER MUNICIPALITY

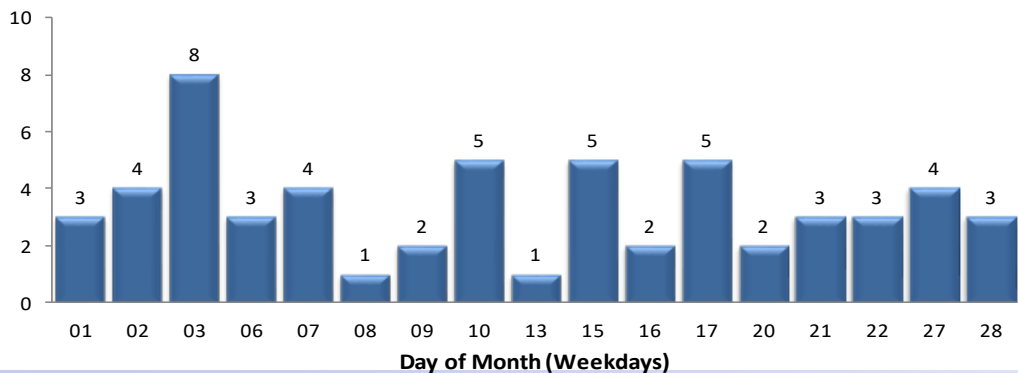


The chart to the left shows how many requests were closed per traffic signal location within each municipality. The chart to the right shows breakdown of the requests closed under MDOT or MCDR / local municipality jurisdiction.

## GOVDELIVERY NOTIFICATIONS

In the month of February, the TOC sent out **58** GovDelivery notifications. The number of recipients receiving GovDelivery notifications increased from **4,446** to **4,493** this month.

Note: The chart below only shows data for the days GovDelivery notifications were sent from the TOC.



GovDelivery is a tool to notify Macomb County motorists of any incident blocking at least one lane of traffic or causing traffic issues. The notifications are sent after an incident has been verified.

[Sign up for incident notifications on weekdays from 6 a.m. to 6 p.m. causing lane or roadway closures on major Macomb County arterials.](#)

MOTORIST EXPERIENCE

February 2023

