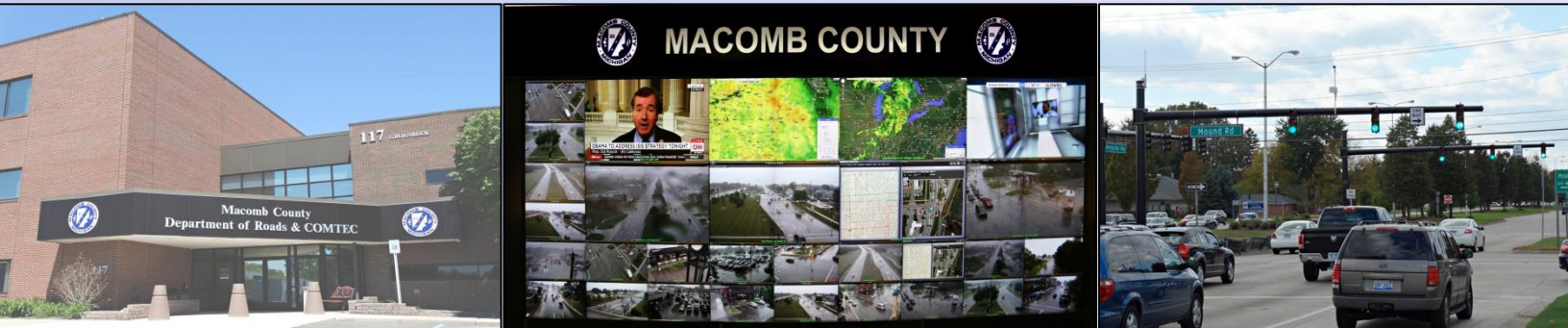


MACOMB COUNTY DEPARTMENT OF ROADS

TRAFFIC OPERATIONS CENTER

"To provide and maintain a reliable real-time traffic operations system, in coordination with county stakeholders, that enables a safe, efficient, and informative travel experience."
- MCDR TOC Mission Statement

PERFORMANCE MEASURES



November 2022

AECOM

WSP

**INTEGRAL
BLUE**



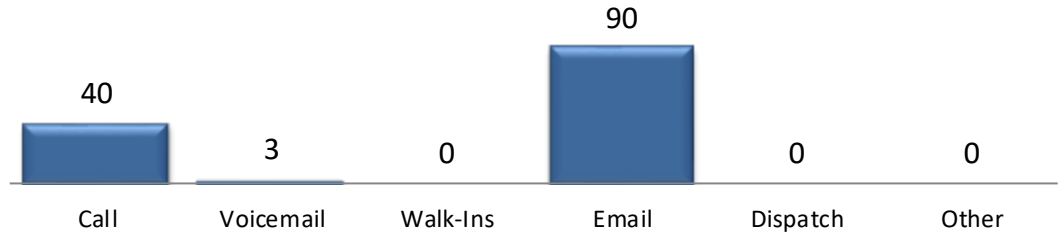
John Abraham, PhD, PE, PTOE
Director of Traffic & Operations
Macomb County Department of Roads
117 S Groesbeck Hwy
Mount Clemens, MI 48043
586-463-8671
JAbraham@RCMCWeb.org

MONTHLY TOC HIGHLIGHT

On November 20th, Macomb County Department of Roads (MCDR) Traffic Operations Center (TOC) staff was on hand for The Mall at Partridge Creek's annual tree lighting ceremony, making real-time traffic signal adjustments to accommodate for the influx of traffic on surrounding roadways. By monitoring roadway conditions via heat maps and CCTV coverage, staff was able to incrementally adjust signal timings to allow for an optimal flow of traffic entering and leaving the event. As a result, there was no increase in travel times due to the added egress traffic, and no incidents occurred, allowing for safe and efficient traffic conditions for Macomb County motorists.

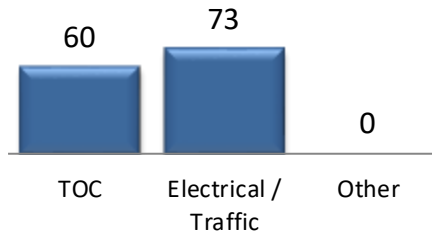
OPENED SERVICE REQUESTS

Service Request Source



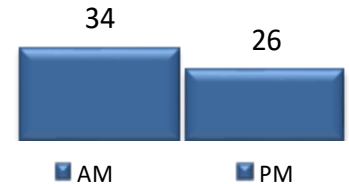
In the month of November, **133** incoming requests regarding traffic signals were received.

Service Request by Dept.

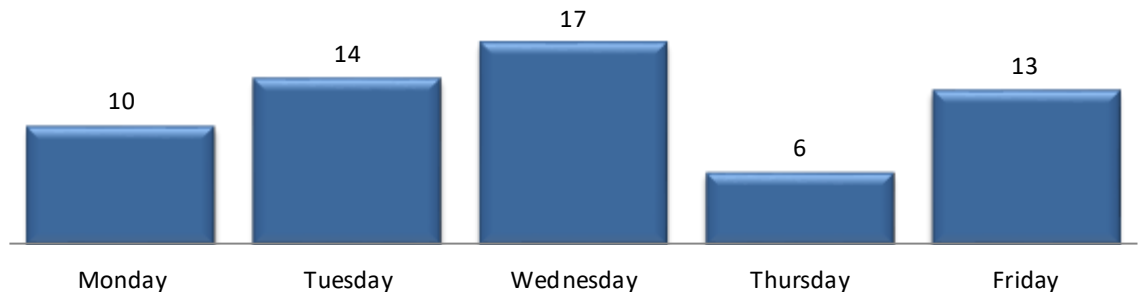


In the month of November, TOC engineers closed **77** service requests within an average of **7** business days.

TOC Service Requests Opened by Time of Day



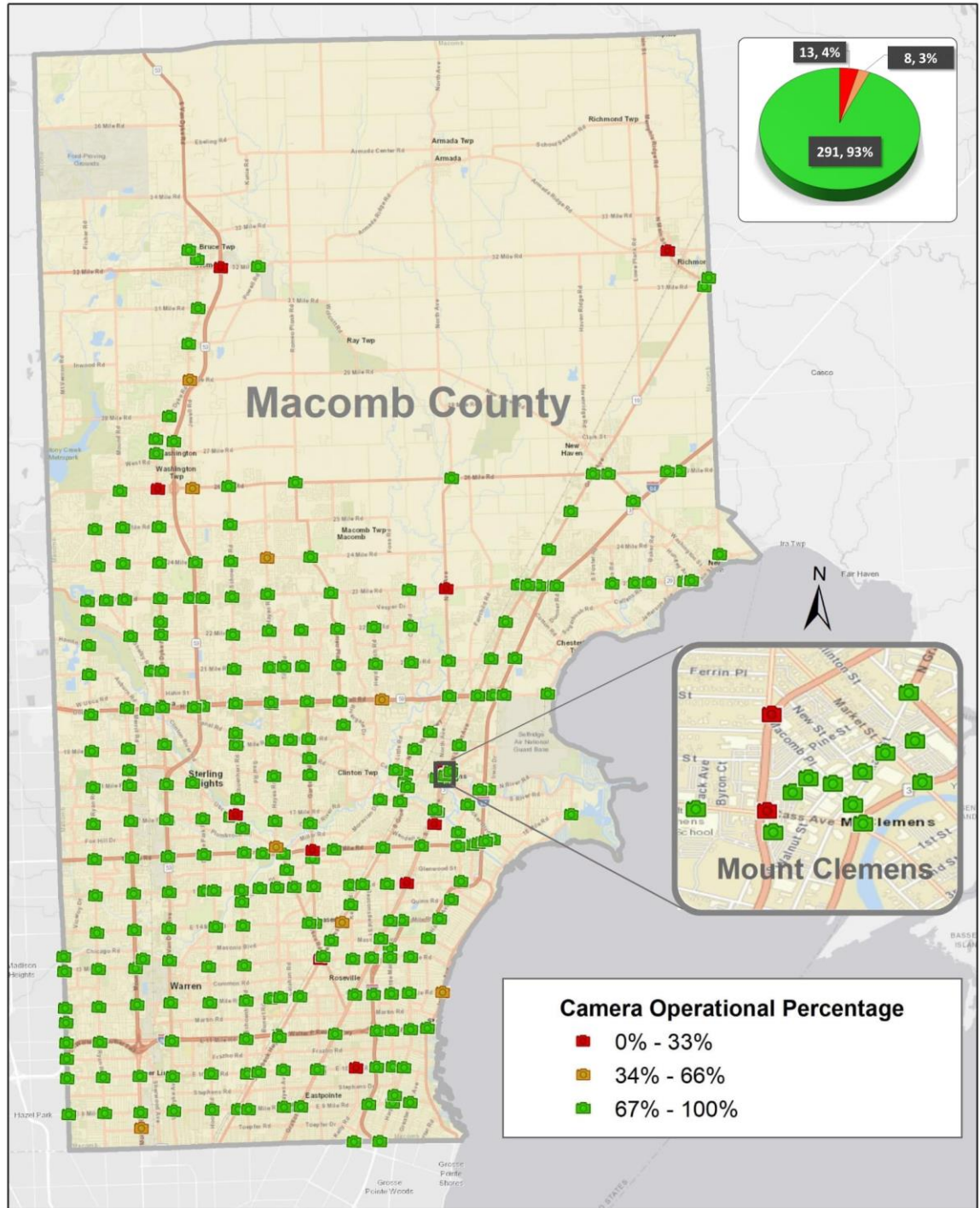
TOC Service Request Opened Per Day of Week



CCTV TRAFFIC CAMERA SUMMARY

CAMERA COVERAGE

November 2022



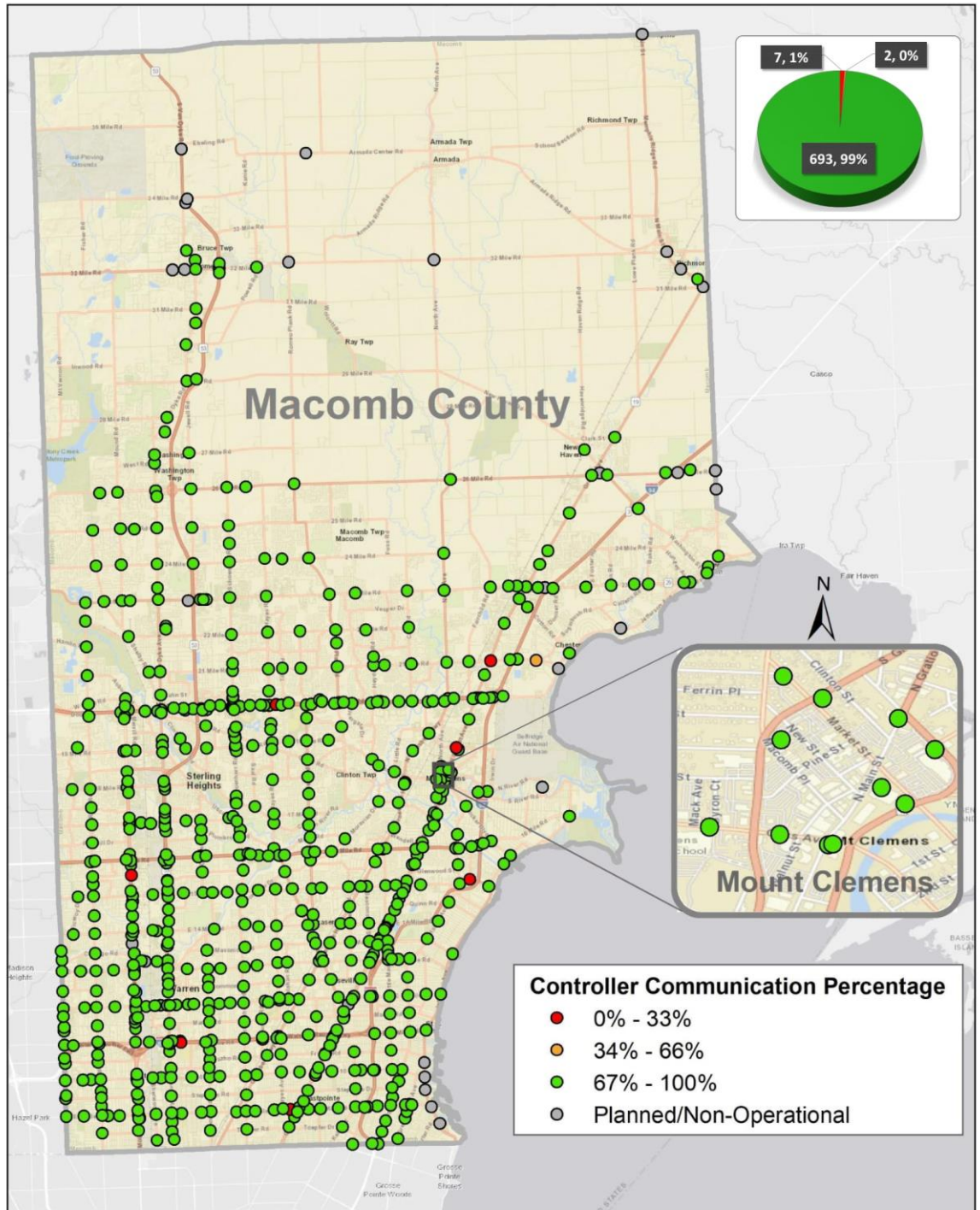
The map above represents the CCTV camera operational percentages for the month of November 2022.



REGIONAL COMMUNICATIONS SUMMARY

ITS MAINTENANCE

November 2022



The map above represents the communication availability percentages of Traffic Signal Controllers for the month of November 2022.



HIGH IMPACT CORRIDOR COMMUNICATIONS AVAILABILITY

Corridor	Current Month	Previous Month	Change
9 Mile	98%	99%	-1%
14 Mile	99%	99%	0%
15 Mile	99%	99%	0%
Metro Parkway	100%	99%	1%
Hall Rd(M-59)	98%	99%	-1%
Dequindre	95%	90%	5%
Ryan	99%	98%	1%
Mound	98%	99%	-1%
Hoover	99%	99%	0%
Schoenherr	99%	99%	0%
Hayes	99%	99%	0%
Gratiot(M-3)	98%	99%	-1%
Harper	99%	99%	0%

The table above represents a one-time monthly snapshot of communications along major corridors in Macomb County.

FIELD WORK

44 sites visited by the IT/ITS Maintenance Technicians. 23 sites visited by the combined efforts of the IT/ITS Maintenance and MCDR Electrical crews.

SIGNAL TIMING CHANGES

Traffic signal changes performed by TOC engineers

Time of Signal change	Location	Intersection	Reason for signal change
11/16/2022 8:03	Gratiot SB (M-3)/Wendell	459	Congestion
11/16/2022 8:03	Gratiot NB (M-3)/Schaefer	413	Congestion
11/16/2022 8:03	Metropolitan Parkway EB/Crossover 475' W of Gratiot	647	Congestion
11/16/2022 8:03	Metropolitan Parkway WB/Crossover 550' E of Gratiot	648	Congestion
11/16/2022 8:04	Groesbeck (M-97)/Harrington	195	Congestion
11/16/2022 8:04	15 Mile Road/Harper/Klix	210	Congestion
11/16/2022 9:24	Hayes/23 Mile Road	653	Incident
11/16/2022 9:31	I-94 Ramp D/Metropolitan Parkway WB	596	Congestion
11/16/2022 9:32	Metropolitan Parkway WB/Crossover 295' E of Harper	650	Congestion
11/16/2022 9:32	Harper/Metropolitan Parkway	218	Congestion



SIGNAL TIMING CHANGES CONTINUED

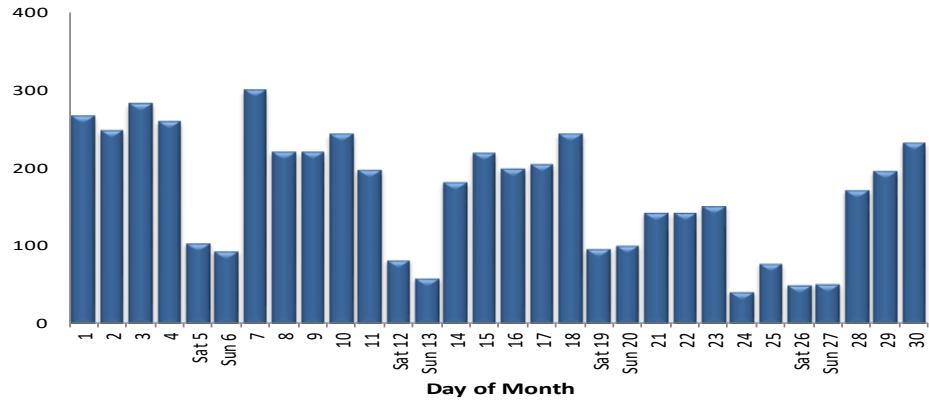
MAINTENANCE

November 2022

Time of Signal change	Location	Intersection	Reason for signal change
11/16/2022 9:32	Metropolitan Parkway EB/Crossover 300' W of Harper	649	Congestion
11/16/2022 17:08	Schoenherr/13 Mile Road	306	Congestion
11/16/2022 17:09	Hoover/13 Mile Road	234	Congestion
11/18/2022 9:36	I-696 Service Drive (Westbound/North Side)/Schoenherr	347	Incident
11/18/2022 9:36	Hall Road EB (M-59)/Crossover West of Groesbeck	808	Construction
11/18/2022 9:36	Groesbeck (M-97)/Hall Road (M-59)	193	Construction
11/18/2022 9:36	Hall Road WB (M-59)/Crossover East of Groesbeck	809	Construction
11/18/2022 9:36	Hall Road EB (M-59)/Crossover West of Gratiot	810	Construction
11/18/2022 9:36	Gratiot (M-3)/Hall Road (M-59)	162	Construction
11/18/2022 9:36	Hall Road WB (M-59)/Crossover East of Gratiot	811	Construction
11/18/2022 9:36	Hall Road WB (M-59)/Marketplace Boulevard (West of I-94)	890	Congestion
11/18/2022 9:36	Ryan/12 Mile Road	303	Congestion
11/18/2022 9:36	Common/Ryan	160	Congestion
11/18/2022 9:36	Ryan/13 Mile Road	301	Congestion
11/18/2022 9:36	Schoenherr SB/Crossover North of Hall Road (M-59)	784	Incident
11/18/2022 11:01	I-94 EB Off Ramp/M-19/New Haven	886	Congestion
11/18/2022 11:01	I-94 WB Off Ramp/26 Mile Road	852	Congestion
11/18/2022 11:01	I-94 EB Off Ramp/26 Mile Road	851	Congestion
11/18/2022 15:49	Heydenreich/21 Mile Road	276	Service Request
11/18/2022 16:39	10 Mile Road/Van Dyke	313	Congestion
11/21/2022 11:33	Gratiot (M-3)/Metropolitan Parkway	172	Incident
11/21/2022 12:28	Metropolitan Parkway/Van Dyke	310	Incident
11/21/2022 14:29	14 Mile Road/Ryan	144	Incident
11/22/2022 17:50	19 Mile Road/Ryan	88	Service Request
11/22/2022 17:50	Groesbeck/I-696 N Service Drive	19	Incident
11/22/2022 17:50	Groesbeck (M-97)/12 Mile Road	204	Congestion
11/23/2022 7:33	Garfield/Hall Road (M-59)	156	Incident
11/23/2022 13:42	Ryan/17 Mile Road	447	Service Request
11/23/2022 14:11	15 Mile Road/Maple Lane	405	Service Request
11/28/2022 8:20	Gratiot NB (M-3)/Crossover 850' S of 14 Mile Road	532	Service Request
11/29/2022 8:26	Metropolitan Parkway EB/Crossover 475' W of Gratiot	647	Congestion
11/29/2022 8:27	Metropolitan Parkway WB/Crossover 550' E of Gratiot	648	Congestion
11/29/2022 8:27	Gratiot (M-3)/Metropolitan Parkway	172	Congestion
11/29/2022 16:18	Delco/Hall Road (M-59)	525	Incident
11/30/2022 8:04	15 Mile Road/Groesbeck (M-97)	134	Incident

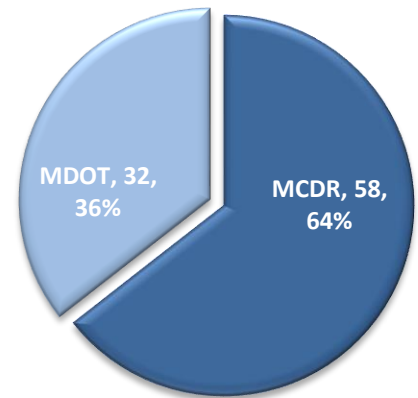
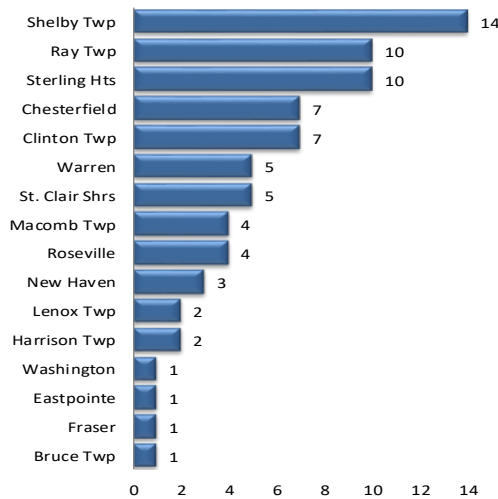


MCDR WEBSITE HITS



A total of **5,041** hits were accrued at <http://roads.macombgov.org/>.

CLOSED SERVICE REQUESTS PER MUNICIPALITY

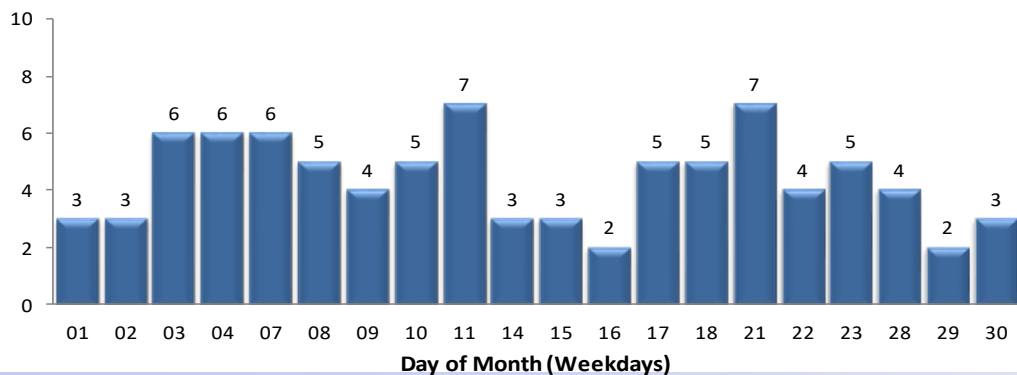


The chart to the left shows how many requests were closed per traffic signal location under municipality jurisdiction. The chart to the right shows breakdown of the requests closed under MDOT or MCDR / local municipality jurisdiction.

GOVDELIVERY NOTIFICATIONS

In the month of November, the TOC sent out **88** GovDelivery notifications. The number of recipients receiving GovDelivery notifications increased from **4,200** to **4,347** this month.

Note: The chart below only shows data for the days GovDelivery notifications were sent from the TOC.



GovDelivery is a tool to notify Macomb County motorists of any incident blocking at least one lane of traffic or causing traffic issues. The notifications are sent after an incident has been verified.

[Sign up for incident notifications on weekdays from 6 a.m. to 6 p.m. causing lane or roadway closures on major Macomb County arterials.](#)

MOTORIST EXPERIENCE

November 2022

