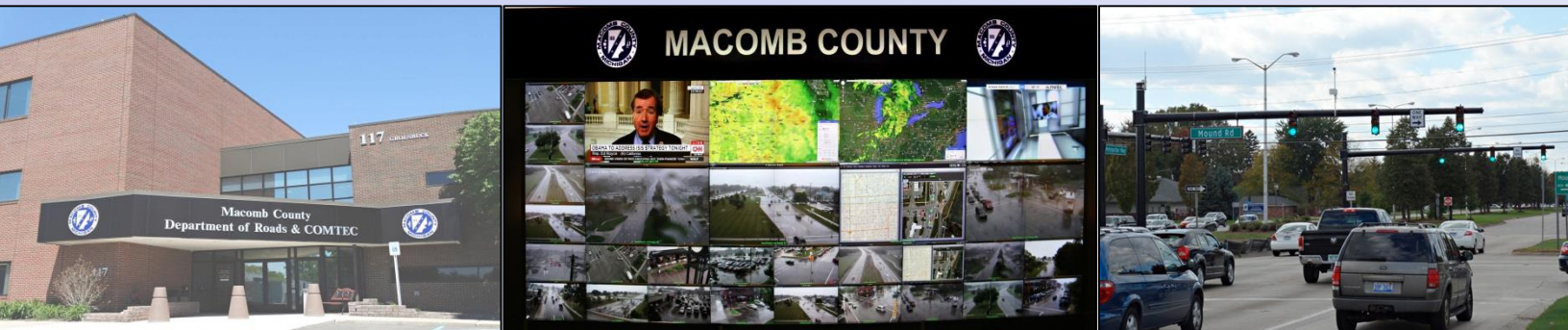


# MACOMB COUNTY DEPARTMENT OF ROADS

## TRAFFIC OPERATIONS CENTER

*"To provide and maintain a reliable real-time traffic operations system, in coordination with county stakeholders, that enables a safe, efficient, and informative travel experience."  
- MCDR TOC Mission Statement*

## PERFORMANCE MEASURES



**December 2022**

**AECOM**

**WSP**

**INTEGRAL  
BLUE**



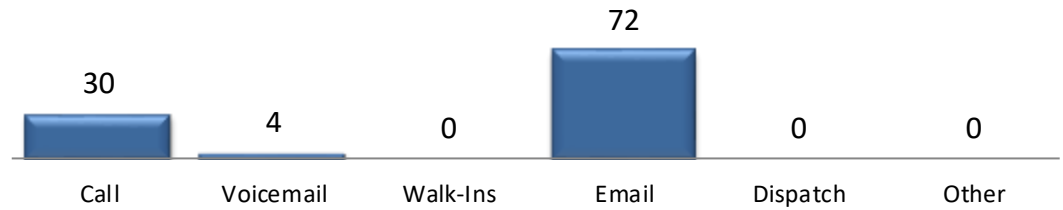
**John Abraham, PhD, PE, PTOE**  
Director of Traffic & Operations  
Macomb County Department of Roads  
117 S Groesbeck Hwy  
Mount Clemens, MI 48043  
586-463-8671  
[JAbraham@RCMCWeb.org](mailto:JAbraham@RCMCWeb.org)

# MONTHLY TOC HIGHLIGHT

On December 23<sup>rd</sup>, Macomb County experienced a severe winter storm event in the region, with snow totals generally reaching between 2-6 inches. Combined with single digit temperatures and 40-50 mph winds, this winter storm created problematic driving conditions for motorists in Macomb County. Macomb County Department of Roads (MCDR) Traffic Operations Center (TOC) staff was on hand to monitor traffic conditions in real-time, making signal timing changes to adjust to increasingly challenging and dangerous driving conditions, and alerting the public of incidents that may affect their travel.

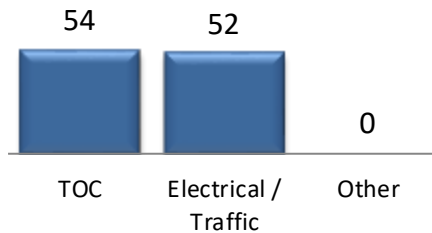
## OPENED SERVICE REQUESTS

Service Request Source



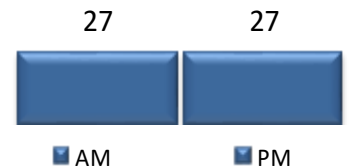
In the month of December, **106** incoming requests regarding traffic signals were received.

Service Request by Dept.

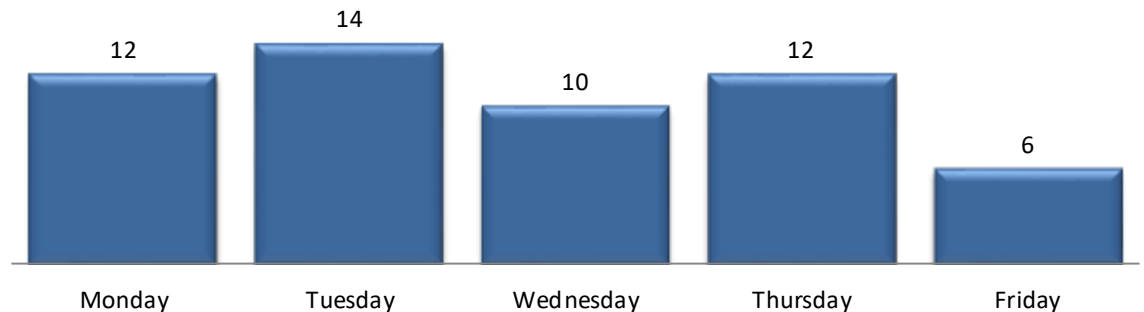


In the month of December, TOC engineers closed **63** service requests within an average of **6** business days.

TOC Service Requests Opened by Time of Day



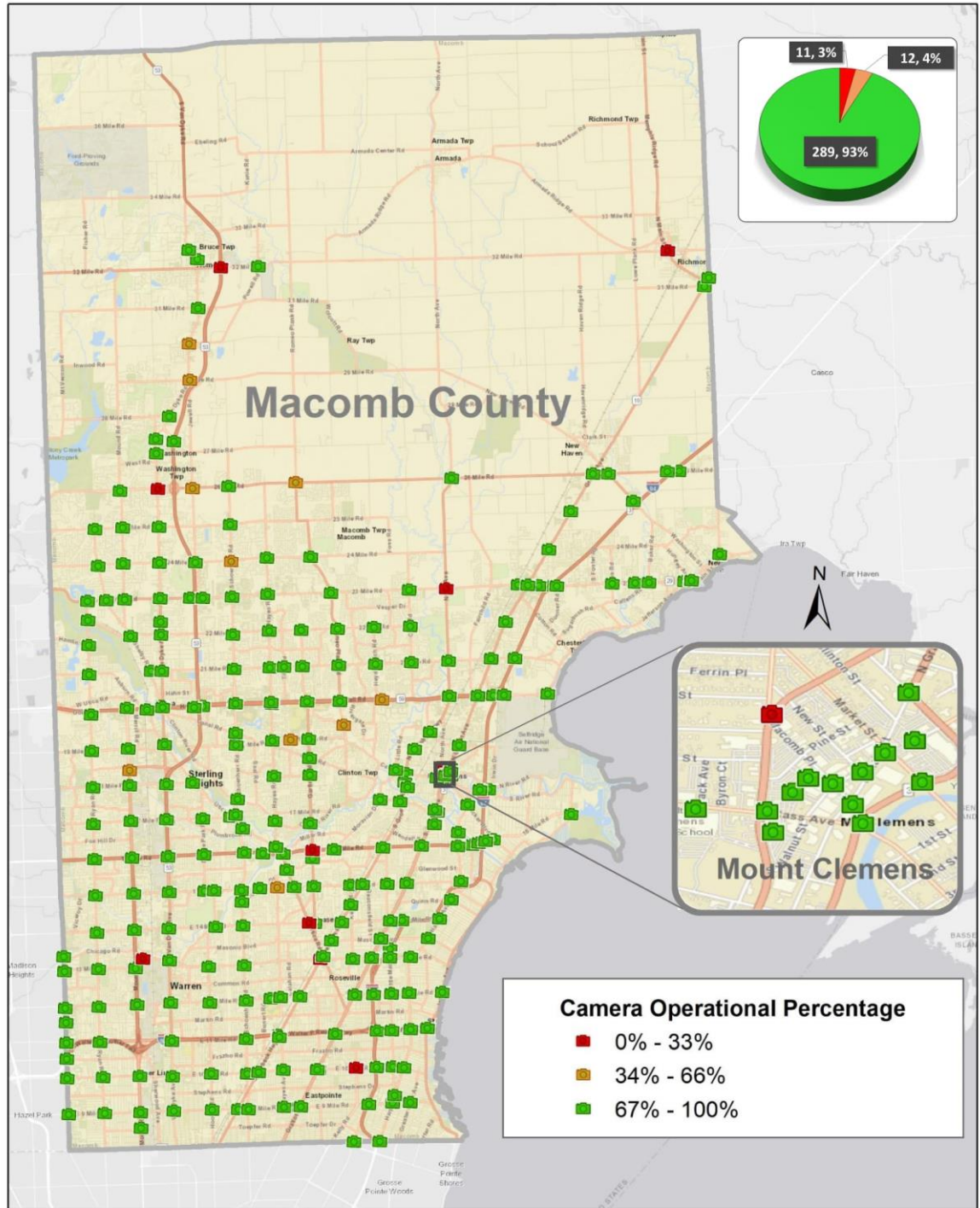
TOC Service Request Opened Per Day of Week



# CCTV TRAFFIC CAMERA SUMMARY

## CAMERA COVERAGE

December 2022



The map above represents the CCTV camera operational percentages for the month of December 2022.

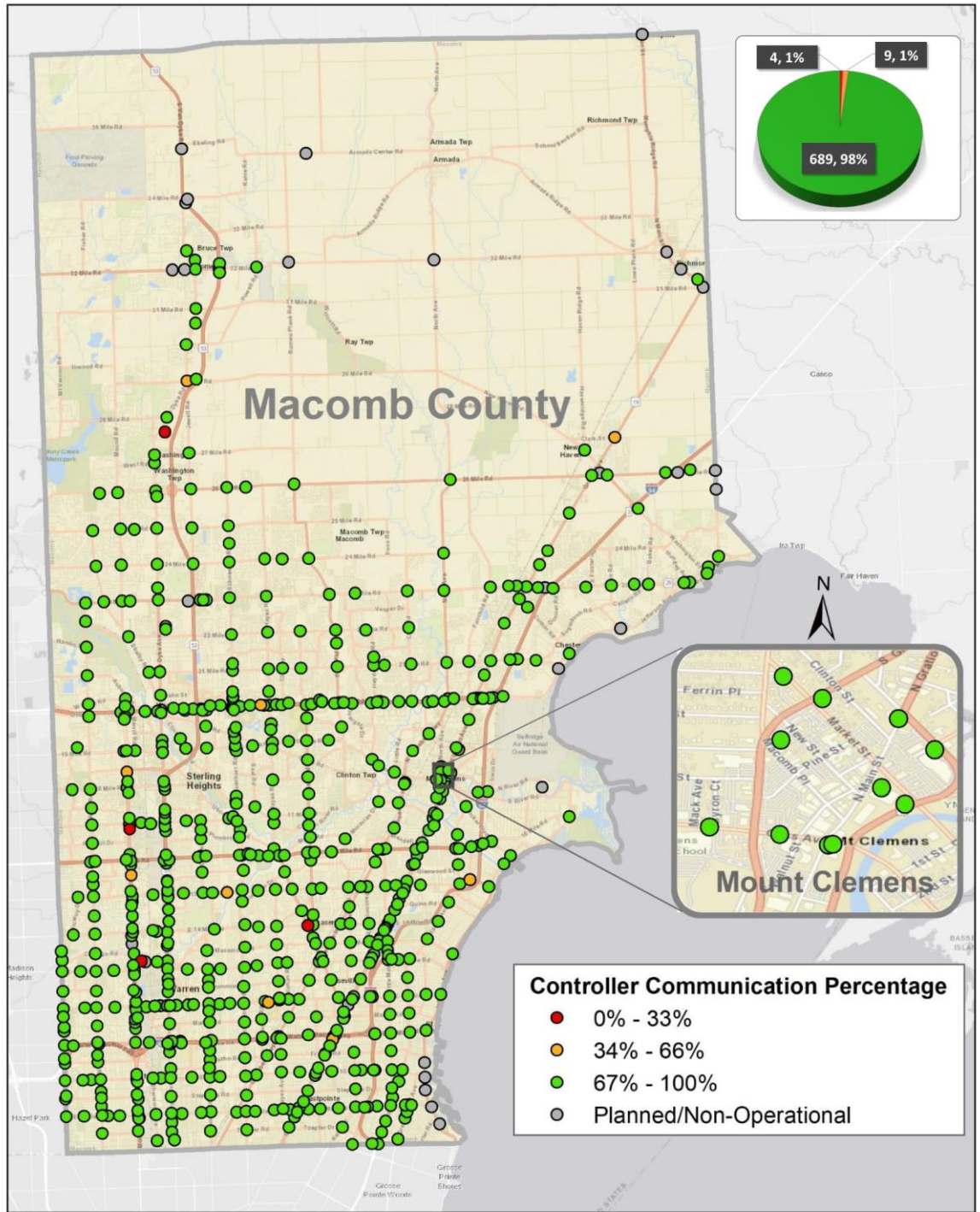




# REGIONAL COMMUNICATIONS SUMMARY

## ITS MAINTENANCE

December 2022



The map above represents the communication availability percentages of Traffic Signal Controllers for the month of December 2022.



# HIGH IMPACT CORRIDOR COMMUNICATIONS AVAILABILITY

Corridor	Current Month	Previous Month	Change
9 Mile	99%	98%	1%
14 Mile	92%	99%	-7%
15 Mile	97%	99%	-2%
Metro Parkway	99%	100%	-1%
Hall Rd(M-59)	99%	98%	1%
Dequindre	99%	95%	4%
Ryan	99%	99%	0%
Mound	97%	98%	-1%
Hoover	99%	99%	0%
Schoenherr	99%	99%	0%
Hayes	99%	99%	0%
Gratiot(M-3)	99%	98%	1%
Harper	99%	99%	0%

*The table above represents a one-time monthly snapshot of communications along major corridors in Macomb County.*

## FIELD WORK

*53 sites visited by the IT/ITS Maintenance Technicians. 14 sites visited by the combined efforts of the IT/ITS Maintenance and MCDR Electrical crews.*

## SIGNAL TIMING CHANGES

*Traffic signal changes performed by TOC engineers*

Time of Signal change	Location	Intersection	Reason for signal change
12/01/2022 9:46	Metropolitan Parkway EB/Crossover 475' W of Gratiot	647	Incident
12/01/2022 9:46	Metropolitan Parkway WB/Crossover 550' E of Gratiot	648	Incident
12/01/2022 9:46	Gratiot (M-3)/Metropolitan Parkway	172	Incident
12/01/2022 10:35	Groesbeck (M-97)/Hall Road (M-59)	193	Construction
12/01/2022 10:35	Hall Road EB (M-59)/Crossover West of Groesbeck	808	Construction
12/01/2022 10:35	Hall Road WB (M-59)/Crossover East of Groesbeck	809	Construction
12/01/2022 16:20	14 Mile Road/Ryan	144	Congestion
12/02/2022 15:11	Hall Road EB (M-59)/Crossover West of Schoenherr	766	Congestion
12/02/2022 15:11	Hall Road (M-59)/Schoenherr	207	Congestion
12/02/2022 15:11	Hall Road WB (M-59)/Crossover East of Schoenherr	767	Congestion



# SIGNAL TIMING CHANGES CONTINUED

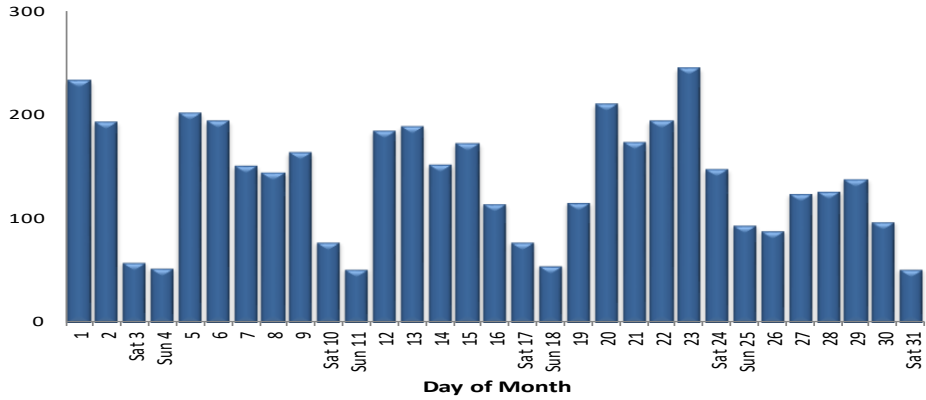
**MAINTENANCE**

December 2022

Time of Signal change	Location	Intersection	Reason for signal change
12/02/2022 15:11	Schoenherr NB/Crossover South of Hall Road (M-59)	785	Congestion
12/05/2022 17:16	Gratiot (M-3)/Metropolitan Parkway	172	Congestion
12/06/2022 8:37	Groesbeck (M-97)/Harrington	195	Congestion
12/08/2022 15:43	Gratiot (M-3)/Metropolitan Parkway	172	Construction
12/08/2022 15:45	Metropolitan Parkway EB/Crossover 475' W of Gratiot	647	Construction
12/08/2022 15:45	Metropolitan Parkway WB/Crossover 550' E of Gratiot	648	Construction
12/08/2022 15:45	Gratiot NB (M-3)/Schaefer	413	Construction
12/08/2022 15:47	Gratiot SB (M-3)/Wendell	459	Construction
12/09/2022 8:10	Gratiot (M-3)/I-696 Service Drive (Westbound/North Side)	431	Incident
12/09/2022 8:11	Gratiot/I-696 S Service Drive	115	Incident
12/09/2022 17:09	Gratiot (M-19)/New Haven Road	174	Incident
12/13/2022 7:47	Ryan/22 Mile Road	709	Construction
12/13/2022 7:47	Hamlin/Ryan	963	Construction
12/13/2022 7:47	Auburn/Ryan	49	Construction
12/13/2022 16:34	Canal/Schoenherr	487	Service Request
12/15/2022 15:40	Hall Road (M-59)/Elizabeth	632	Construction
12/15/2022 15:40	Hall Road WB (M-59)/Crossover East of Elizabeth	807	Construction
12/15/2022 15:40	Hall Road EB (M-59)/Crossover West of Groesbeck	808	Construction
12/15/2022 15:40	Groesbeck (M-97)/Hall Road (M-59)	193	Construction
12/15/2022 15:40	Hall Road WB (M-59)/Crossover East of Groesbeck	809	Construction
12/15/2022 15:41	Hall Road EB (M-59)/Crossover West of Gratiot	810	Construction
12/15/2022 15:41	Gratiot (M-3)/Hall Road (M-59)	162	Construction
12/15/2022 15:41	Hall Road WB (M-59)/Crossover East of Gratiot	811	Construction
12/15/2022 15:41	Hall Road WB (M-59)/Marketplace Boulevard (West of I-94)	890	Construction
12/15/2022 15:41	Hall Road WB (M-59)/I-94 WB Off Ramp	812	Construction
12/16/2022 14:56	Harper/13 Mile Road	224	Service Request
12/16/2022 17:05	Bobcean/15 Mile Road	516	Construction
12/19/2022 12:05	Canal/Schoenherr	487	Service Request
12/21/2022 15:58	Nine Mile Road/Ryan	283	Service Request
12/21/2022 17:33	18 Mile Road/Ryan	381	Incident
12/21/2022 17:36	Hamlin/Ryan	963	Service Request
12/22/2022 16:49	Lakeside Boulevard/Schoenherr NB	904	Congestion
12/29/2022 14:49	Schoenherr/26 Mile Road	947	Construction

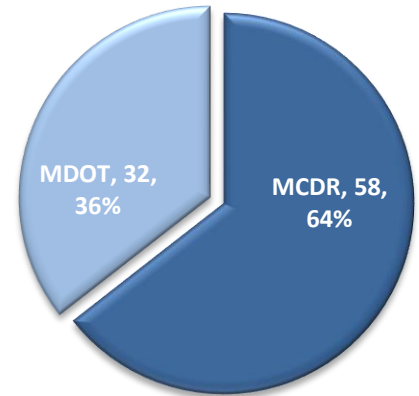
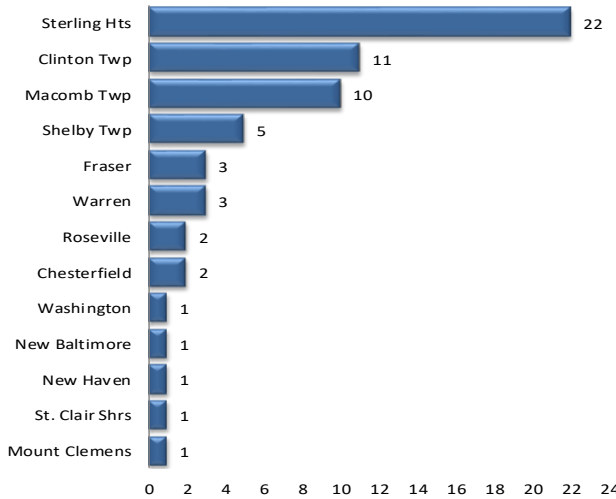


# MCDR WEBSITE HITS



A total of **4,254** hits were accrued at <http://roads.macombgov.org/>.

## CLOSED SERVICE REQUESTS PER MUNICIPALITY

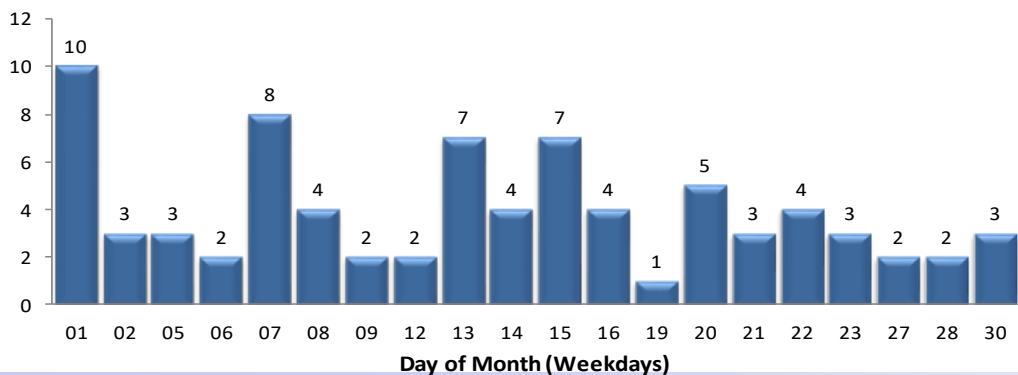


The chart to the left shows how many requests were closed per traffic signal location under municipality jurisdiction. The chart to the right shows breakdown of the requests closed under MDOT or MCDR / local municipality jurisdiction.

## GOVDELIVERY NOTIFICATIONS

In the month of December, the TOC sent out **79** GovDelivery notifications. The number of recipients receiving GovDelivery notifications increased from **4,347** to **4,396** this month.

Note: The chart below only shows data for the days GovDelivery notifications were sent from the TOC.



GovDelivery is a tool to notify Macomb County motorists of any incident blocking at least one lane of traffic or causing traffic issues. The notifications are sent after an incident has been verified.

[Sign up for incident notifications on weekdays from 6 a.m. to 6 p.m. causing lane or roadway closures on major Macomb County arterials.](#)

MOTORIST EXPERIENCE

December 2022

