

MACOMB COUNTY DEPARTMENT OF ROADS

TRAFFIC OPERATIONS CENTER

"To provide and maintain a reliable real-time traffic operations system, in coordination with county stakeholders, that enables a safe, efficient, and informative travel experience."
- MCDR-TOC Mission Statement

PERFORMANCE MEASURES



September 2019

AECOM

WSP

**INTEGRAL
BLUE**



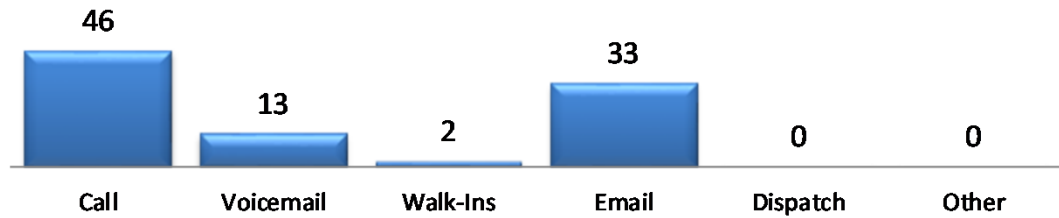
John Abraham, PhD, PE, PTOE
Director of Traffic & Operations
Macomb County Department of Roads
117 S Groesbeck Hwy
Mount Clemens, MI 48043
586-463-8671
JAbraham@RCMCWeb.org

MONTHLY TOC HIGHLIGHT

On September 25th and 26th, the Macomb County Department of Roads (MCDR), was represented by the Director of Traffic and Operations, Dr. John Abraham, at the 2019 ITS Michigan Annual Meeting. Dr. Abraham participated as a panel expert discussing Macomb County's current and future deployments of Transportation Systems Management and Operations (TSMO) technologies. Macomb County's TSMO endeavors have continued the path towards being a Smart Connected Community, incubating projects such as Innovate Mound and a current deployment of connected vehicle communications.

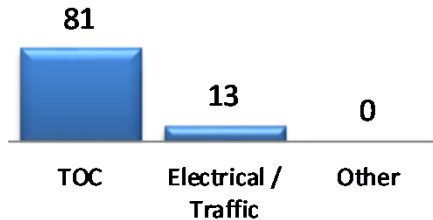
SERVICE REQUESTS

Service Request Source



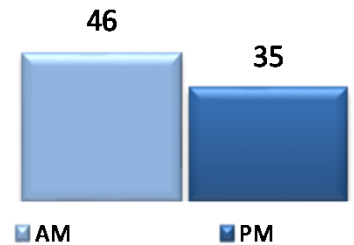
In the month of September, 94 incoming requests regarding traffic signals were received.

Service Request by Dept.

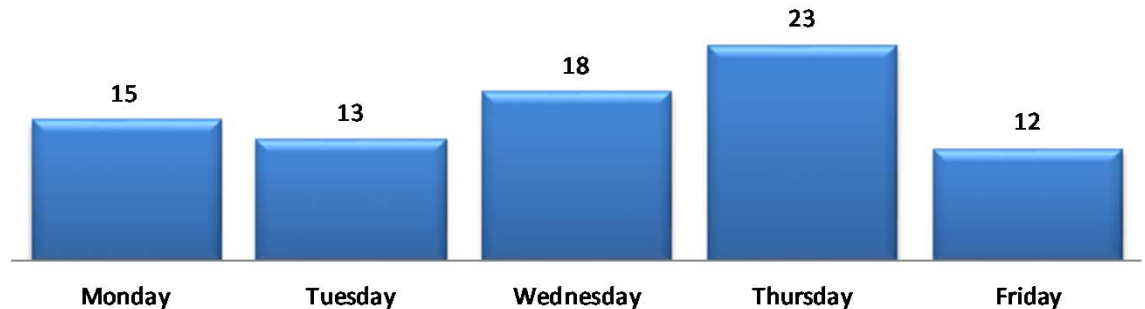


In the month of September, the TOC engineers closed 87 service requests within an average of 6 business days.

TOC by Time of Day



Service Request Per Day of Week



TRAFFIC OPERATIONS

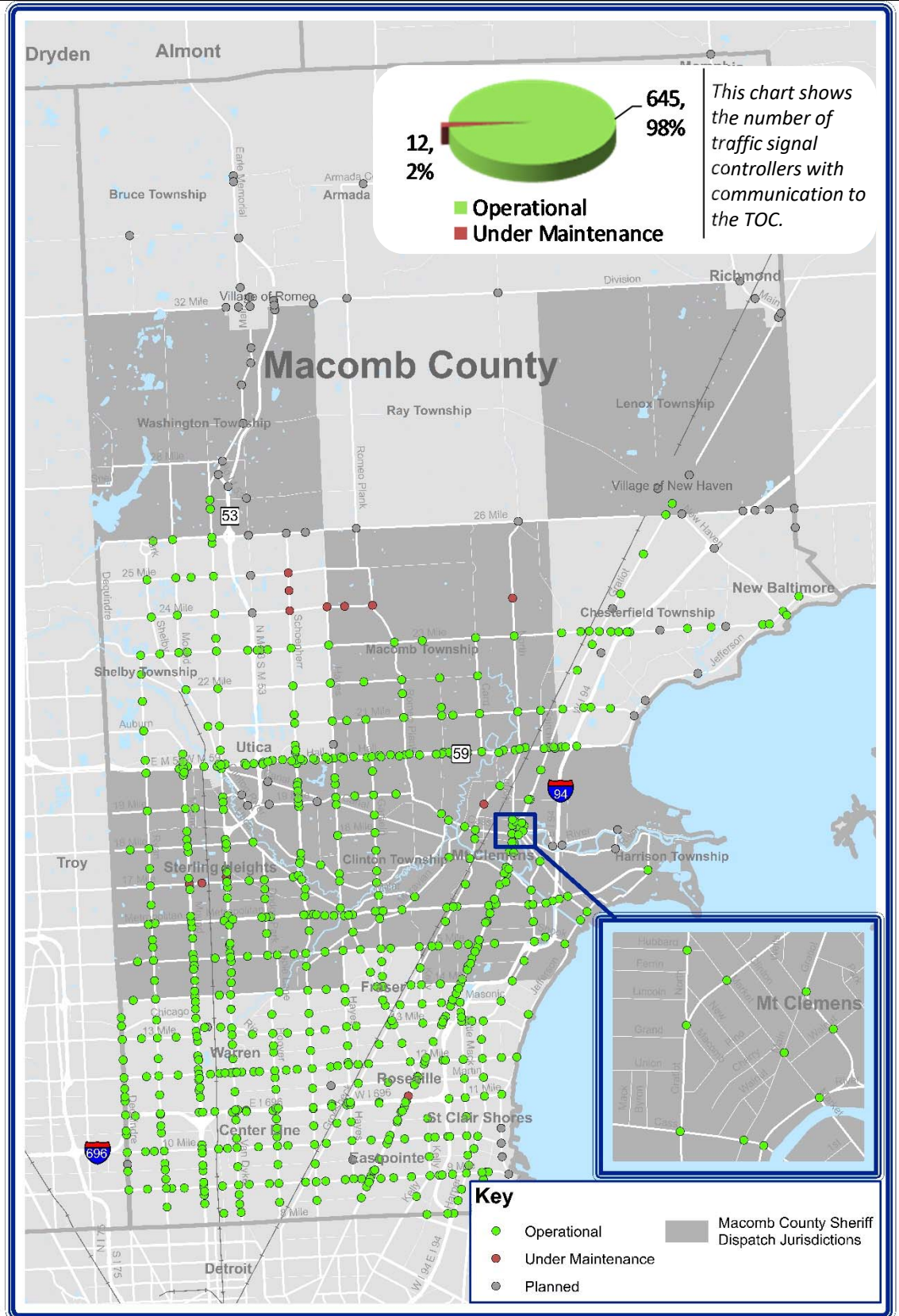
September 2019



REGIONAL COMMUNICATIONS SUMMARY

ITS MAINTENANCE

September 2019



During the target month, the TOC added 0 intersections to the operational communications network. Locations considered to have operational communications are shown in green, while locations found not to have operational communications due to needed maintenance are shown in red. Locations that are "Planned" have not yet been integrated into TOC network.



HIGH IMPACT CORRIDOR COMMUNICATIONS AVAILABILITY

Corridor	Current Month	Previous Month	Change
9 Mile	100%	96%	4%
14 Mile	100%	100%	0%
15 Mile	100%	100%	0%
Metro Parkway	100%	100%	0%
Hall (M-59)	100%	100%	0%
Dequindre	100%	100%	0%
Ryan	100%	100%	0%
Mound	98%	98%	0%
Hoover	100%	100%	0%
Schoenherr	92%	92%	0%
Hayes	96%	96%	0%
Gratiot (M-3)	98%	100%	-2%
Harper	100%	100%	0%

The table above represents a one-time monthly snapshot of communications along major corridors in Macomb County. Corridors which are considered to have operational communications (90% and above) are shown in **green**, while corridors found not to have operational communications (<90%) at the time of the snapshot are shown in **red**.

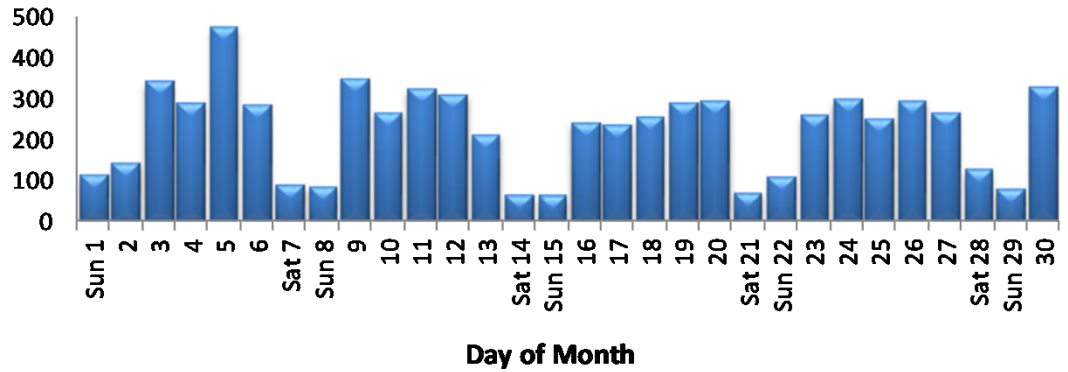
EXECUTED TRAFFIC SIGNAL UPGRADES

September	Location	Upgrade
N/A	N/A	N/A

Tracks the roadway upgrades executed in Macomb County, including those done by other transportation agencies, also lists a description of the upgrades performed.

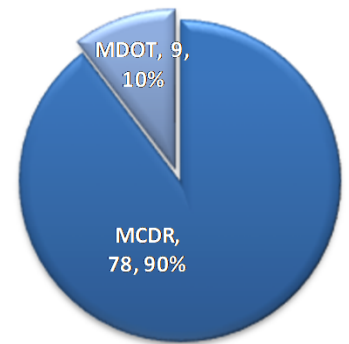
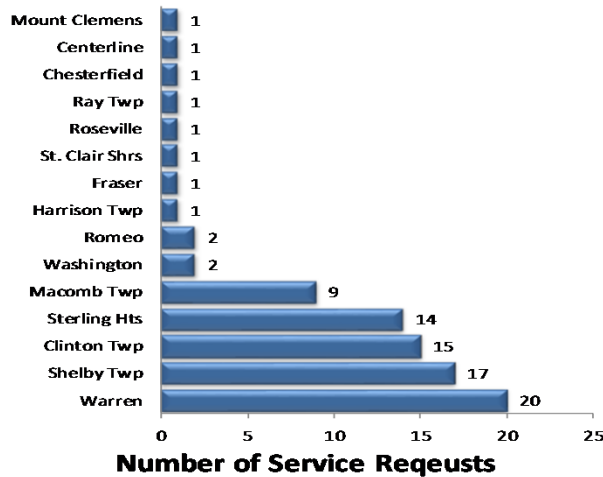


MCDR WEBSITE HITS



A total of 6,821 hits were accrued at <http://roads.macombgov.org/>.

SERVICE REQUESTS PER MUNICIPALITY

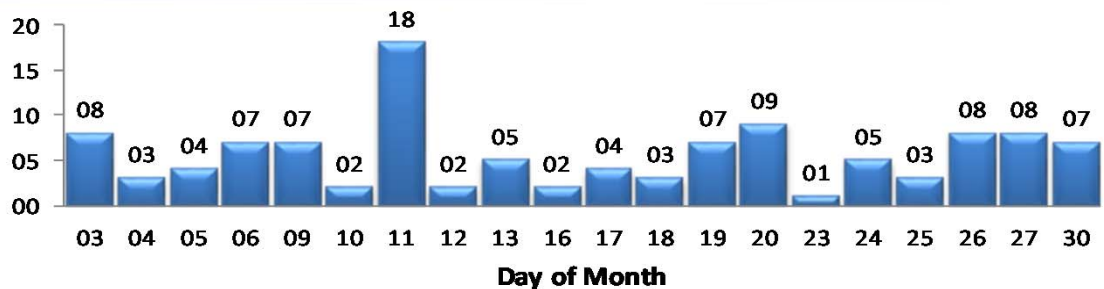


The chart to the left shows how many requests were created per traffic signal location under municipality jurisdiction. The chart to the right shows breakdown of the requests created under MDOT or MCDR / local municipality jurisdiction.

GOVDELIVERY NOTIFICATIONS

In the month of September, the TOC sent out 113 GovDelivery notifications, and increased the number of recipients from 1,577 to 1,640 receiving notifications.

Note: The chart below only shows data for the days GovDelivery notifications were sent from the TOC.



GovDelivery is a tool to notify Macomb County motorists of any incident blocking at least one lane of traffic or causing traffic issues. The notifications are sent after an incident has been verified.

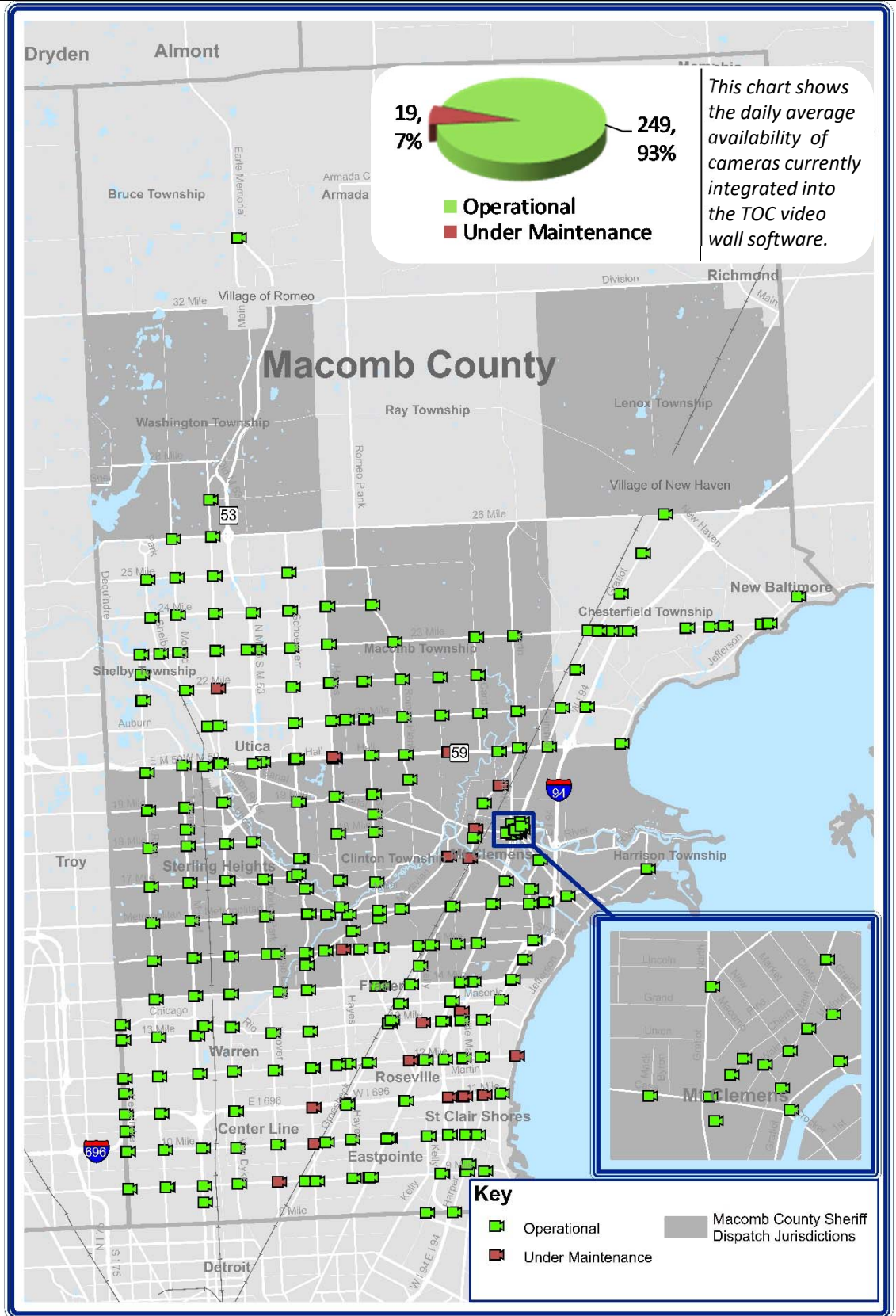
[Sign up for incident notifications on weekdays from 6 a.m. to 6 p.m. causing lane or roadway closures on major Macomb County arterials.](#)



CURRENT CAMERA LOCATIONS

CAMERA COVERAGE

September 2019



During the target month, the TOC added 0 cameras to be viewed on the video wall.

Cameras considered to have operational communications are shown in **green**, while cameras found not to have operational communications due to needed maintenance are shown in **red**.

