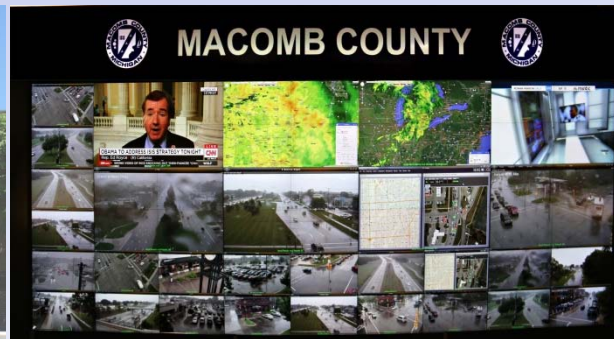


# MACOMB COUNTY DEPARTMENT OF ROADS

## TRAFFIC OPERATIONS CENTER

*"To provide and maintain a reliable real-time traffic operations system, in coordination with county stakeholders, that enables a safe, efficient, and informative travel experience."*

## PERFORMANCE MEASURES



**November 2018**



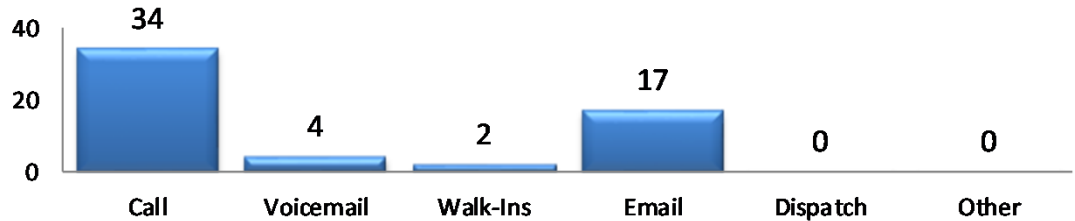
**John Abraham, PhD, PE, PTOE**  
Director of Traffic & Operations  
Macomb County Department of Roads  
117 S Groesbeck Hwy  
Mount Clemens, MI 48043  
586-463-8671  
[JAbraham@RCMCWeb.org](mailto:JAbraham@RCMCWeb.org)

# INFORMATIVE TOC HIGHLIGHT

During the month of November, the Traffic Operation Center (TOC) engineers partnered with the Mall at Partridge Creek's management team to develop a plan for the Annual Christmas Tree Lighting. This coordination reduced traffic congestion in and around the mall. TOC engineers performed real-time traffic operations onsite and remotely to alleviate the increase in traffic throughout the event. Conditions were monitored real-time with the use of traffic cameras.

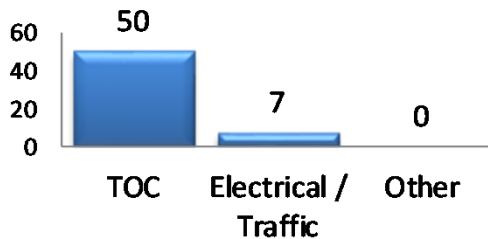
## SERVICE REQUESTS

Source



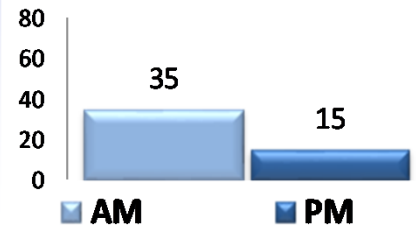
In the month of November, 57 incoming requests regarding traffic signals were received. The 'Source' chart shows how the service request was received by the TOC.

Service Request by Dept.

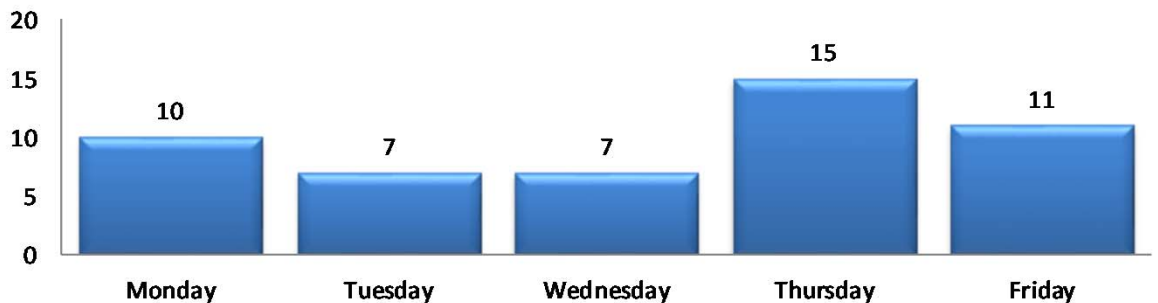


In the month of November, the TOC engineers closed 57 service requests within an average of 7 business days.

TOC AM/PM Requests



Service Request Per Day of Week



TRAFFIC OPERATIONS

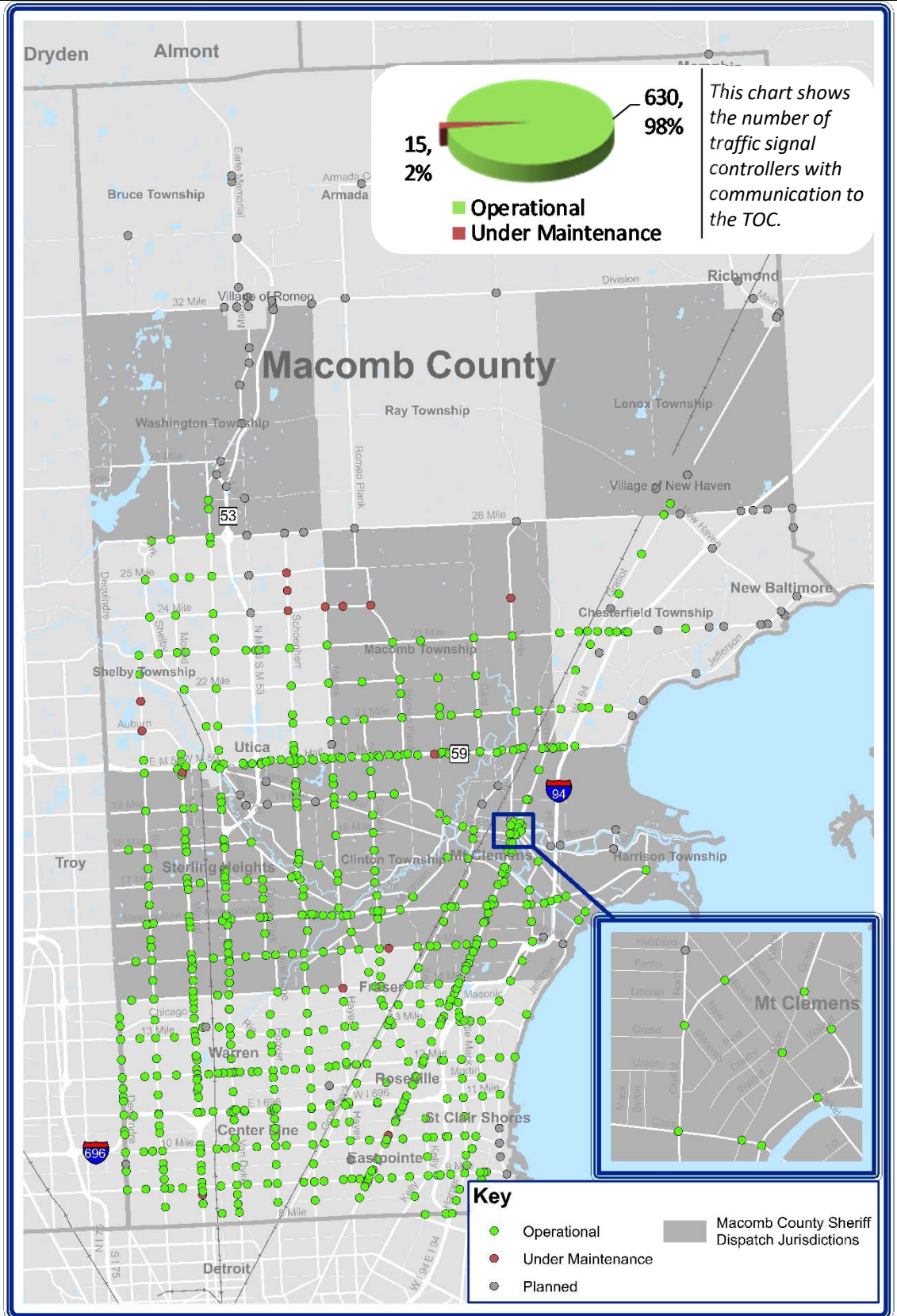
November 2018



# REGIONAL COMMUNICATIONS SUMMARY

## ITS MAINTENANCE

November 2018



**During the target month, the TOC added 0 intersections to our operational communications network.**

Locations considered to have operational communications are shown in **green**, while locations found not to have operational communications due to needed maintenance at the time of the snapshot are shown in **red**. Locations that are "Planned" have not yet been integrated into TOC network.



## COUNTY CORRIDOR COMMUNICATIONS AVAILABILITY

Corridor	Current Month	Previous Month	Change
9 Mile	100%	100%	0%
14 Mile	93%	93%	0%
15 Mile	95%	100%	-5%
Metro Parkway	100%	100%	0%
Hall (M-59)	98%	100%	-2%
Ryan	93%	100%	-7%
Mound	96%	100%	-4%
Hoover	100%	100%	0%
Schoenherr	92%	92%	0%
Hayes	92%	92%	0%
Gratiot (M-3)	98%	98%	0%
Harper	100%	100%	0%

The table above represents a one-time monthly snapshot of communications along major corridors in Macomb County. Corridors which are considered to have operational communications (90% and above) are shown in green, while corridors found not to have operational communications (<90%) at the time of the snapshot are shown in red.

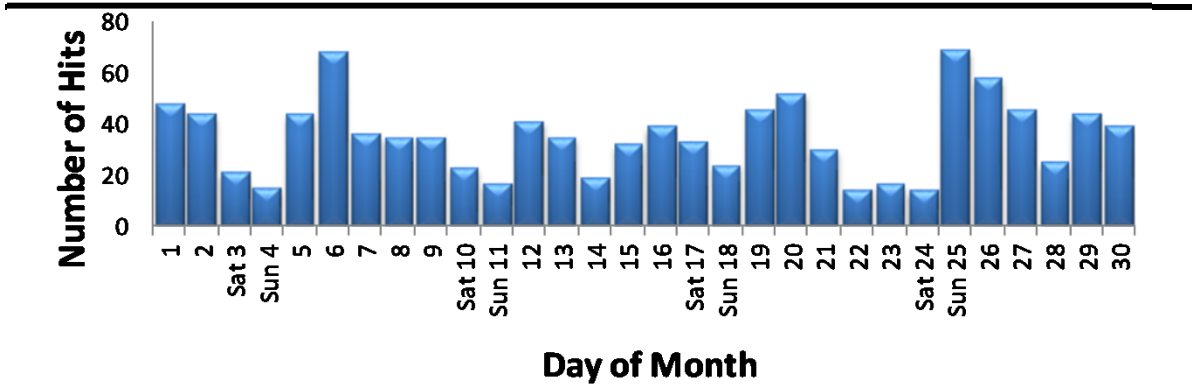
## EXECUTED TRAFFIC SIGNAL UPGRADES

Nov	Location	Upgrade
N/A	N/A	N/A

Tracks the roadway upgrades executed in Macomb County, including those done by other transportation agencies, also lists a description of the upgrades performed.

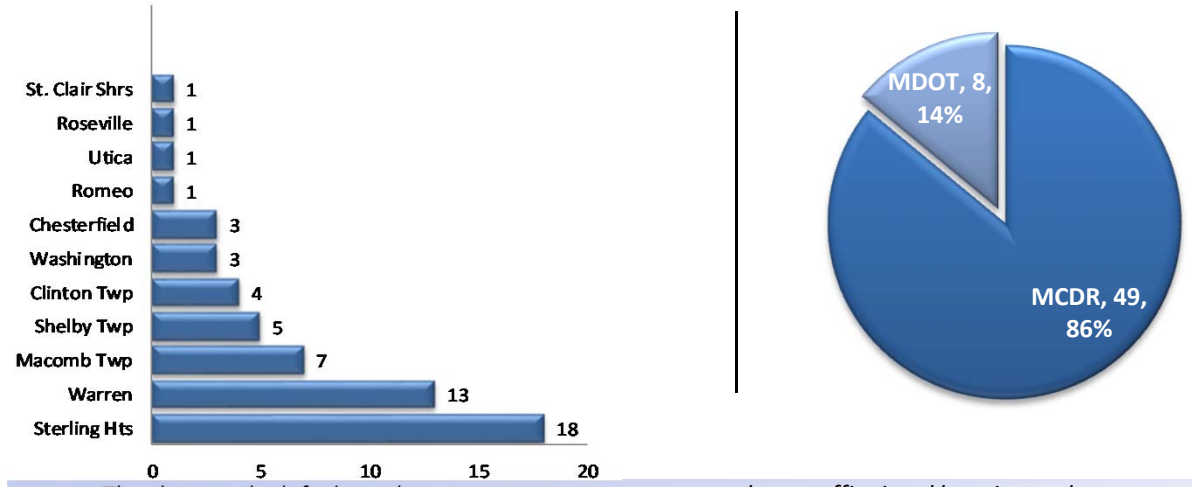


## MCDR WEBSITE HITS



A total of 1063 hits were accrued at <http://roads.macombgov.org/>.

## SERVICE REQUESTS PER MUNICIPALITY

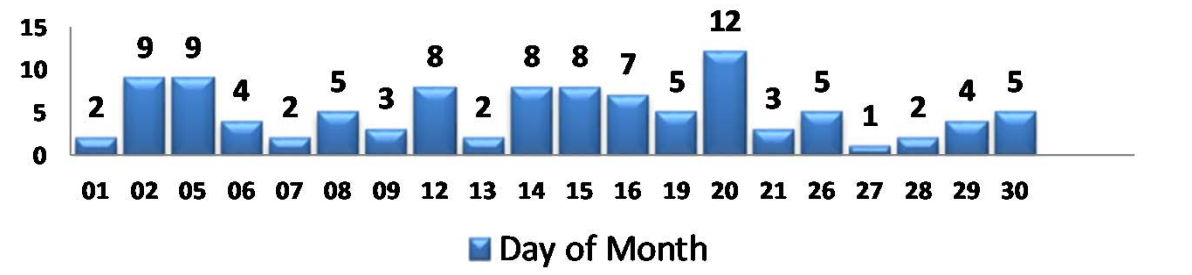


The chart to the left shows how many requests were created per traffic signal location under municipality jurisdiction and the chart to the right shows breakdown of the requests created under MDOT or MCDR / local municipality jurisdiction.

## GOVDELIVERY NOTIFICATIONS

In the month of November, the TOC sent out 85 GovDelivery notifications, and increased the number of recipients from 1,220 to 1,252 receiving notifications.

Note: The chart below only shows data for the days GovDelivery notifications were sent from the TOC.



GovDelivery is a tool to notify Macomb County motorists of any incident blocking at least one lane of traffic, or causing traffic issues. The notifications are only sent after the incident has been verified.

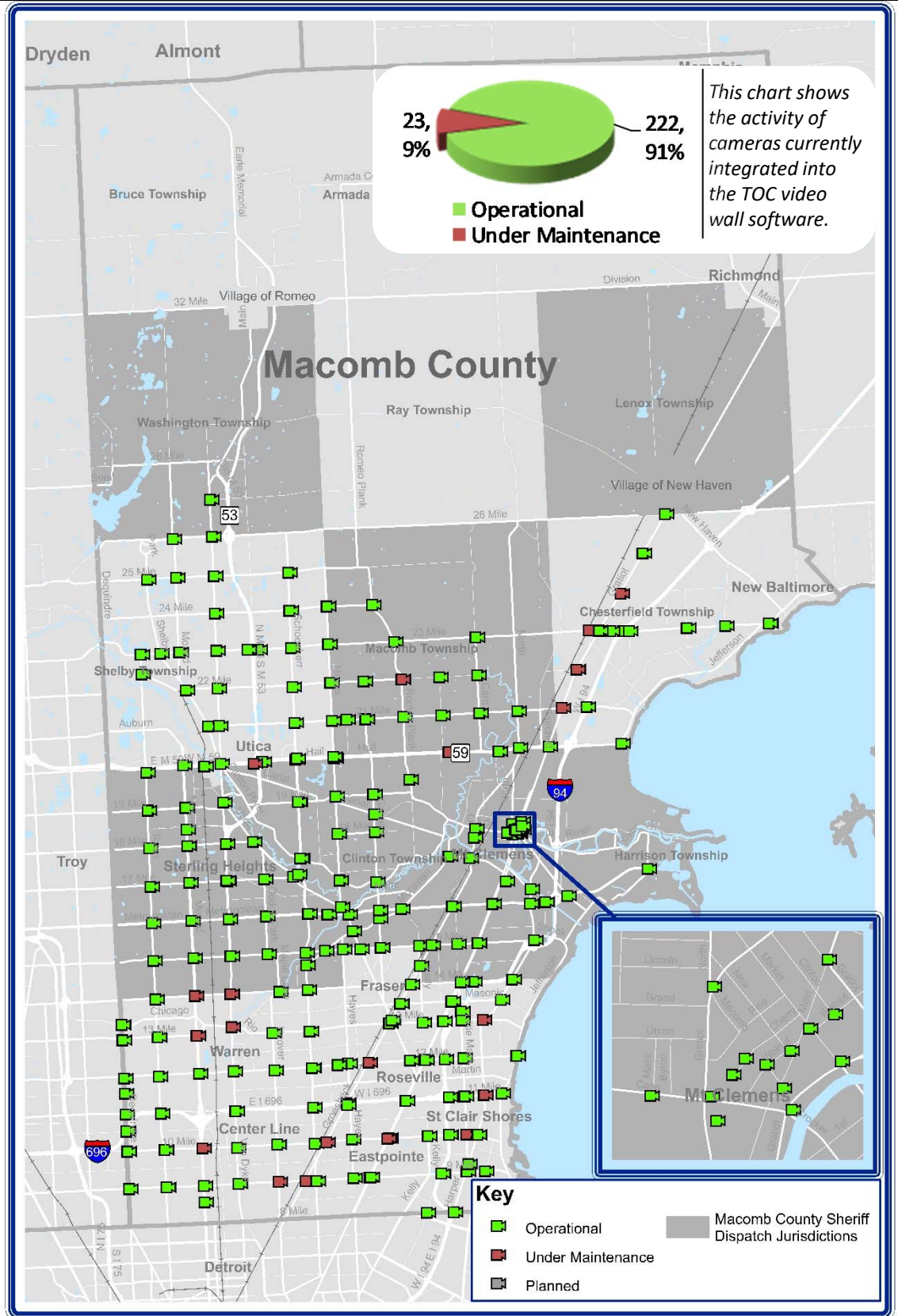
[Sign up for incident notifications on weekdays from 6 a.m. to 6 p.m. causing lane or roadway closures on major Macomb County arterials.](#)



# CURRENT CAMERA LOCATIONS

## CAMERA COVERAGE

November 2018



**During the target month, the TOC added 0 cameras to be viewed on the video wall.**

Cameras considered to have operational communications are shown in **green**, while cameras found not to have operational communications due to needed maintenance at the time of the snapshot are shown in **red**. Cameras that are "Planned" have not yet been integrated into TOC video wall software.

