

MACOMB COUNTY DEPARTMENT OF ROADS

TRAFFIC OPERATIONS CENTER

*"To provide and maintain a reliable real-time traffic operations system, in coordination with county stakeholders, that enables a safe, efficient, and informative travel experience."
- MCDR-TOC Mission Statement*

PERFORMANCE MEASURES



May 2020

AECOM

WSP

**INTEGRAL
BLUE**



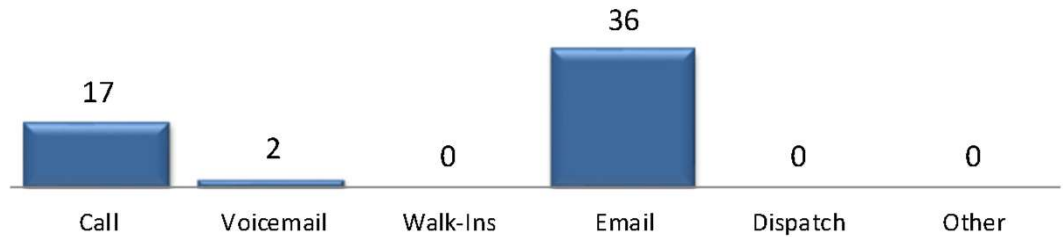
John Abraham, PhD, PE, PTOE
Director of Traffic & Operations
Macomb County Department of Roads
117 S Groesbeck Hwy
Mount Clemens, MI 48043
586-463-8671
JAbraham@RCMCWeb.org

MONTHLY TOC HIGHLIGHT

In the month of May, the TOC continued to review Macomb County traffic trends resulting from the impact of the COVID-19 pandemic. Traffic signal timings were adjusted to account for the changes in traffic patterns. TOC staff will continue to monitor trends and implement system improvements as traffic returns toward normal levels.

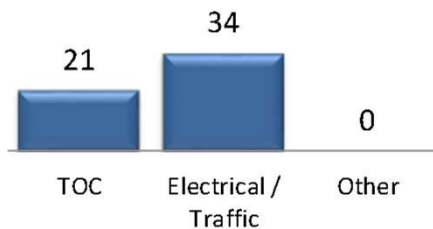
SERVICE REQUESTS

Service Request Source



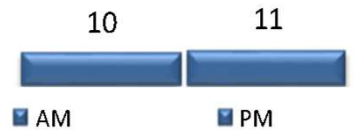
In the month of May, 55 incoming requests regarding traffic signals were received.

Service Request by Dept.

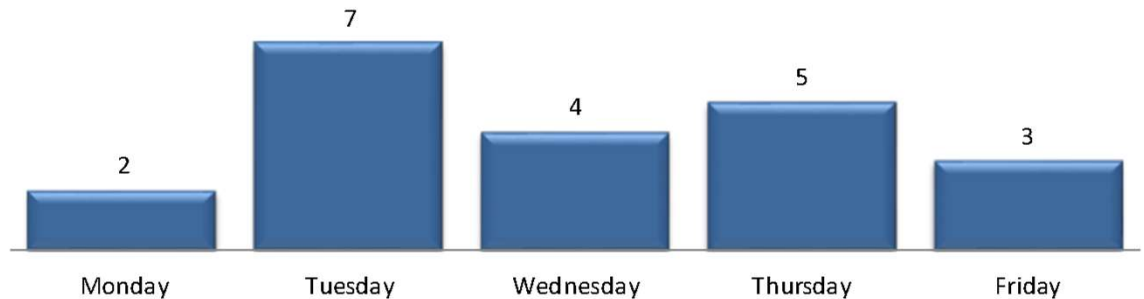


In the month of May, TOC engineers closed 24 service requests within an average of 4 business days.

TOC by Time of Day



Service Request Per Day of Week



TRAFFIC OPERATIONS

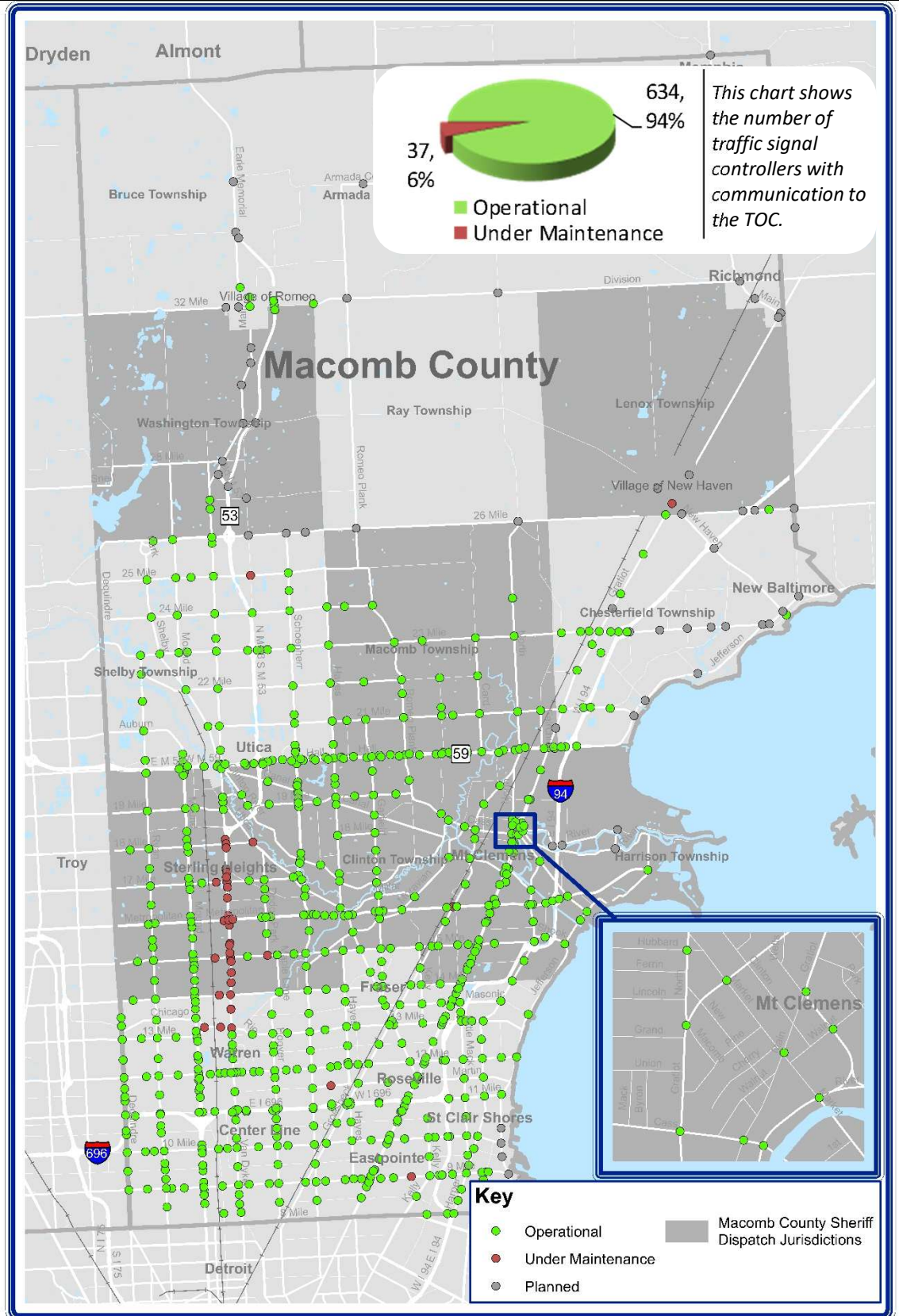
May 2020



REGIONAL COMMUNICATIONS SUMMARY

ITS MAINTENANCE

May 2020



During the target month, the TOC added 0 intersections to the operational communications network.

Locations considered to have operational communications are shown in green, while locations found not to have operational communications due to needed maintenance are shown in red. Locations that are "Planned" have not yet been integrated into TOC network.



HIGH IMPACT CORRIDOR

COMMUNICATIONS AVAILABILITY

Corridor	Current Month	Previous Month	Change
9 Mile	96%	96%	0%
14 Mile	87%	87%	0%
15 Mile	86%	100%	-14%
Metro Parkway	89%	97%	-8%
Hall (M-59)	100%	100%	0%
Dequindre	100%	100%	0%
Ryan	100%	100%	0%
Mound	100%	100%	0%
Hoover	100%	100%	0%
Schoenherr	100%	97%	3%
Hayes	100%	100%	0%
Gratiot (M-3)	98%	98%	0%
Harper	100%	100%	0%

The table above represents a one-time monthly snapshot of communications along major corridors in Macomb County. Corridors which are considered to have operational communications (90% and above) are shown in **green**, while corridors found not to have operational communications (<90%) at the time of the snapshot are shown in **red**.

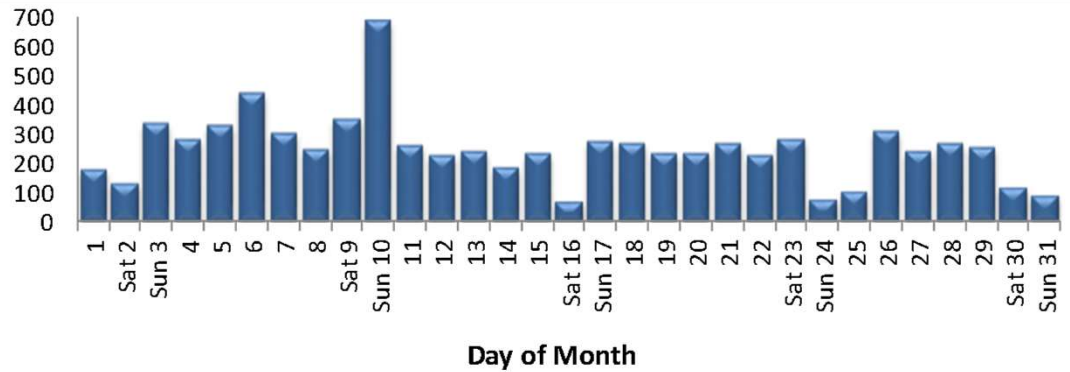
EXECUTED TRAFFIC SIGNAL UPGRADES

May	Location	Upgrade
N/A	N/A	N/A

Tracks the roadway upgrades executed in Macomb County, including those done by other transportation agencies, also lists a description of the upgrades performed.

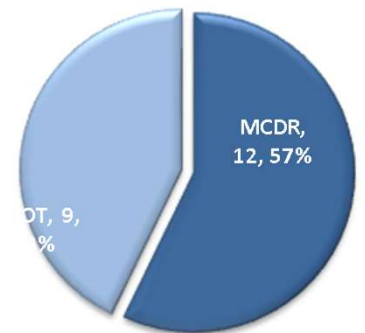
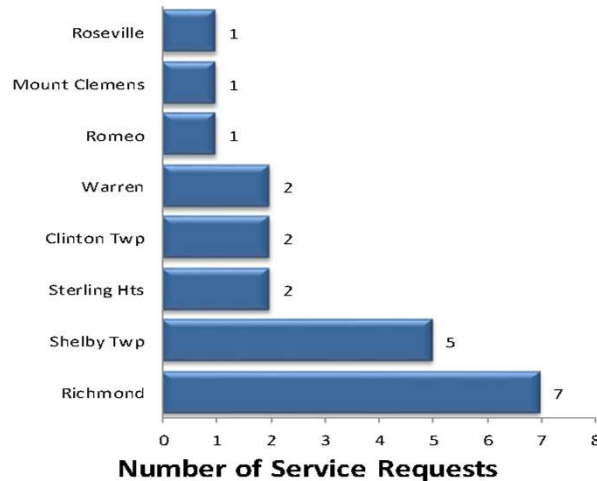


MCDR WEBSITE HITS



A total of 7,666 hits were accrued at <http://roads.macombgov.org/>.

SERVICE REQUESTS PER MUNICIPALITY

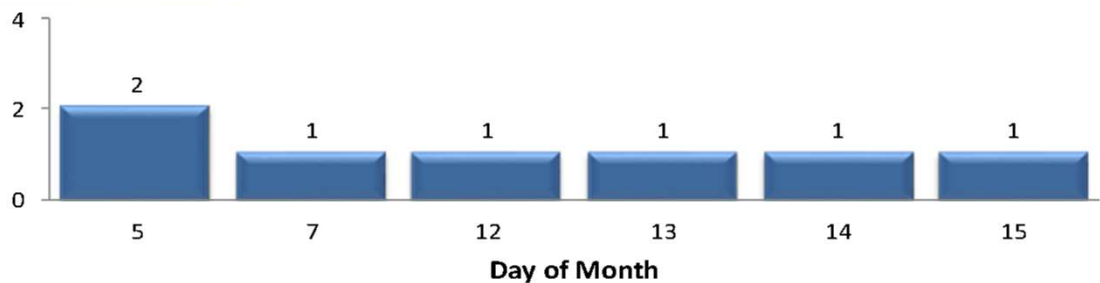


The chart to the left shows how many requests were created per traffic signal location under municipality jurisdiction. The chart to the right shows breakdown of the requests created under MDOT or MCDR / local municipality jurisdiction.

GOVDELIVERY NOTIFICATIONS

In the month of May, the TOC sent out 12 GovDelivery notifications, and increased the number of recipients from 1,946 to 1,970 receiving notifications.

Note: The chart below only shows data for the days GovDelivery notifications were sent from the TOC.



GovDelivery is a tool to notify Macomb County motorists of any incident blocking at least one lane of traffic or causing traffic issues. The notifications are sent after an incident has been verified.

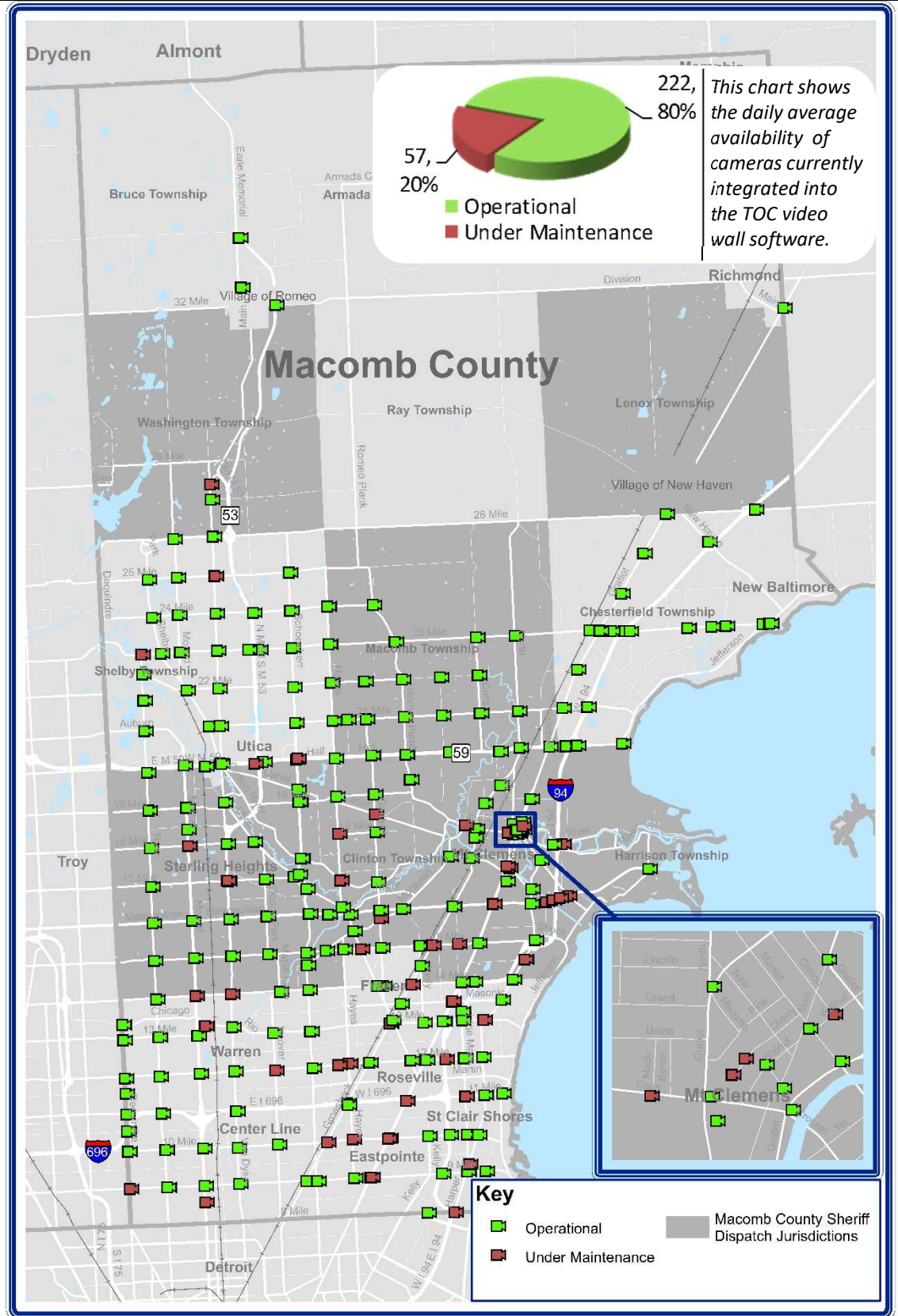
[Sign up for incident notifications on weekdays from 6 a.m. to 6 p.m. causing lane or roadway closures on major Macomb County arterials.](#)



CURRENT CAMERA LOCATIONS

CAMERA COVERAGE

May 2020



During the target month, the TOC added 0 cameras to be viewed on the video wall.

Cameras considered to have operational communications are shown in **green**, while cameras found not to have operational communications due to needed maintenance are shown in **red**.

