

MACOMB COUNTY DEPARTMENT OF ROADS

TRAFFIC OPERATIONS CENTER

"To provide and maintain a reliable real-time traffic operations system, in coordination with county stakeholders, that enables a safe, efficient, and informative travel experience."

PERFORMANCE MEASURES



May 2019

AECOM

WSP

**INTEGRAL
BLUE**



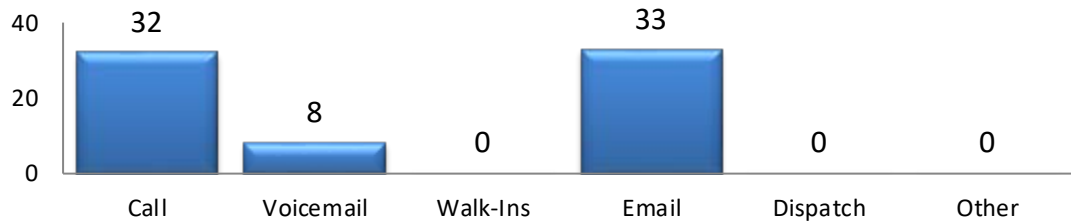
John Abraham, PhD, PE, PTOE
Director of Traffic & Operations
Macomb County Department of Roads
117 S Groesbeck Hwy
Mount Clemens, MI 48043
586-463-8671
JAbraham@RCMCWeb.org

INFORMATIVE TOC HIGHLIGHT

Beginning in the month of May, TOC Traffic Engineers partner with the Control Room Technicians (CRT) during the AM & PM peak hours of operations. CRTs identify, monitor, document, and recommend locations for signal timing adjustments during incidents and atypical congestion. CRTs use traffic cameras and “heat maps” to identify and monitor trouble locations. Traffic Engineers adjust signal timings in real-time to mitigate traffic impacts within the congestion area of influence.

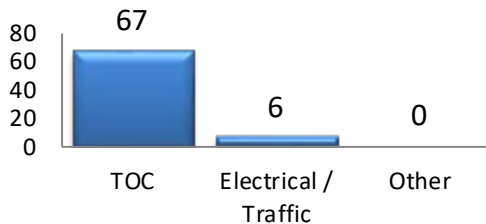
SERVICE REQUESTS

Service Request Source



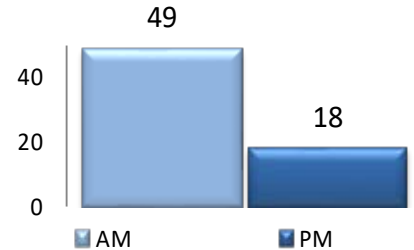
In the month of May, 73 incoming requests regarding traffic signals were received. The ‘Source’ chart shows how the service request was received by the TOC.

Service Request by Dept.

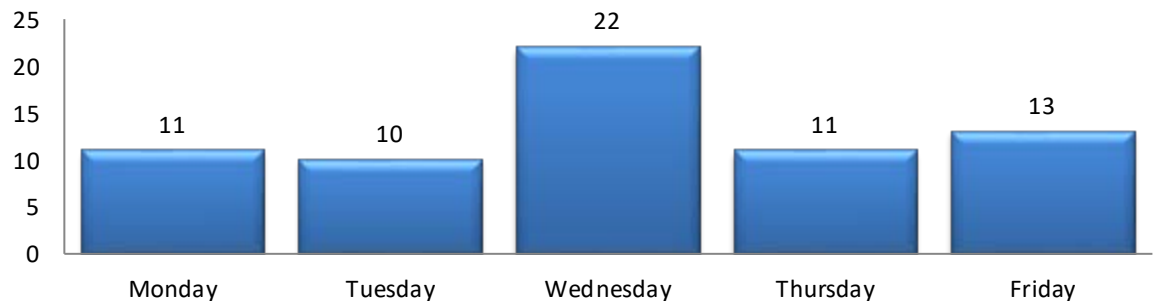


In the month of May, the TOC engineers closed 67 service requests within an average of 4 business days.

TOC by Time of Day



Service Request Per Day of Week



TRAFFIC OPERATIONS

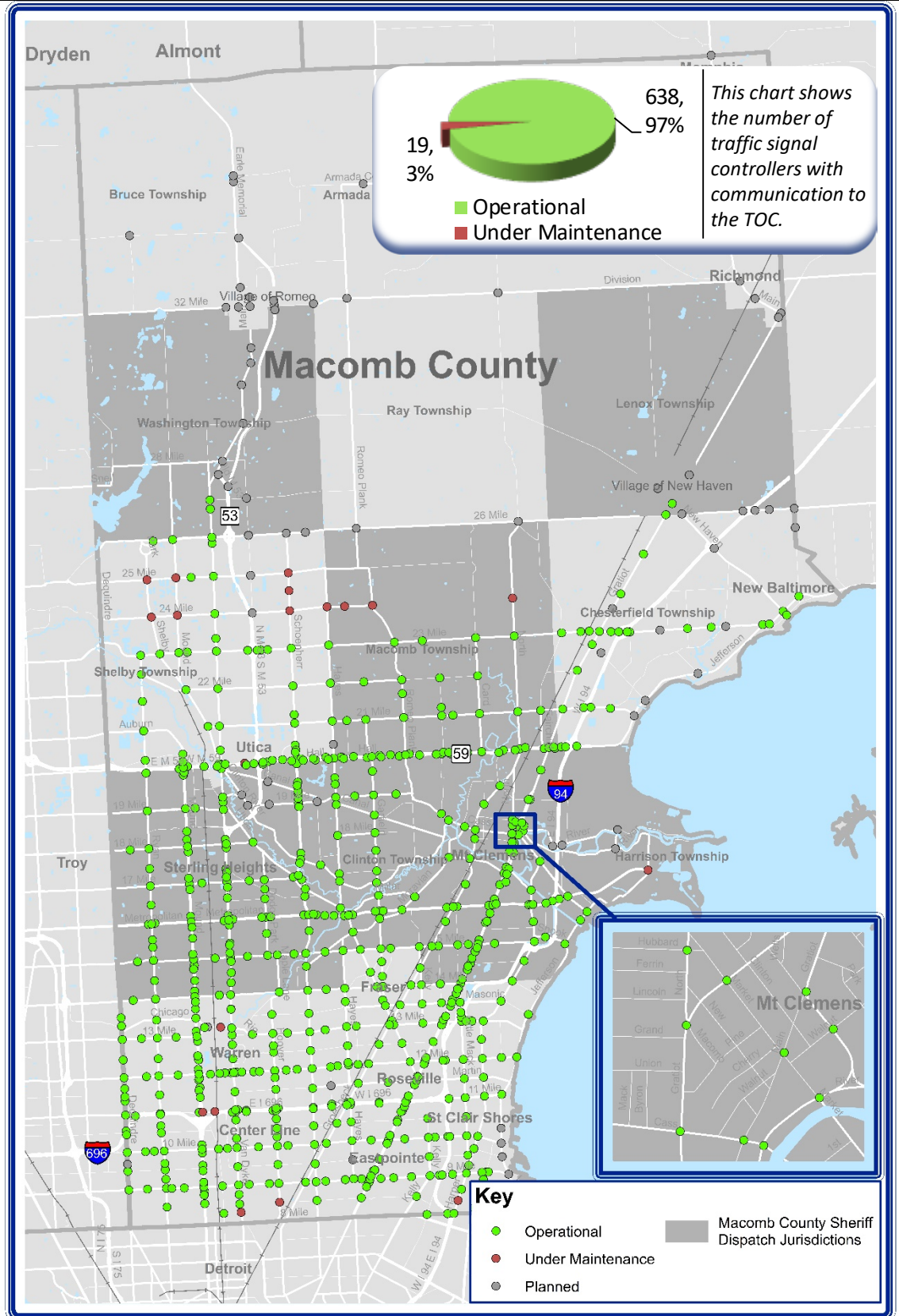
May 2019



REGIONAL COMMUNICATIONS SUMMARY

ITS MAINTENANCE

May 2019



During the target month, the TOC added 0 intersections to our operational communications network.

Locations considered to have operational communications are shown in **green**, while locations found not to have operational communications due to needed maintenance at the time of the snapshot are shown in **red**. Locations that are "Planned" have not yet been integrated into TOC network.



COUNTY CORRIDOR COMMUNICATIONS

AVAILABILITY

| Corridor | Current Month | Previous Month | Change |
|---------------|---------------|----------------|--------|
| 9 Mile | 100% | 100% | 0% |
| 14 Mile | 100% | 100% | 0% |
| 15 Mile | 100% | 100% | 0% |
| Metro Parkway | 97% | 100% | -3% |
| Hall (M-59) | 98% | 100% | -2% |
| Dequindre | 100% | 92% | 8% |
| Ryan | 100% | 100% | 0% |
| Mound | 98% | 100% | -2% |
| Hoover | 93% | 93% | 0% |
| Schoenherr | 92% | 90% | 2% |
| Hayes | 96% | 96% | 0% |
| Gratiot (M-3) | 100% | 96% | 4% |
| Harper | 95% | 95% | 0% |

The table above represents a one-time monthly snapshot of communications along major corridors in Macomb County. Corridors which are considered to have operational communications (90% and above) are shown in **green**, while corridors found not to have operational communications (<90%) at the time of the snapshot are shown in **red**.

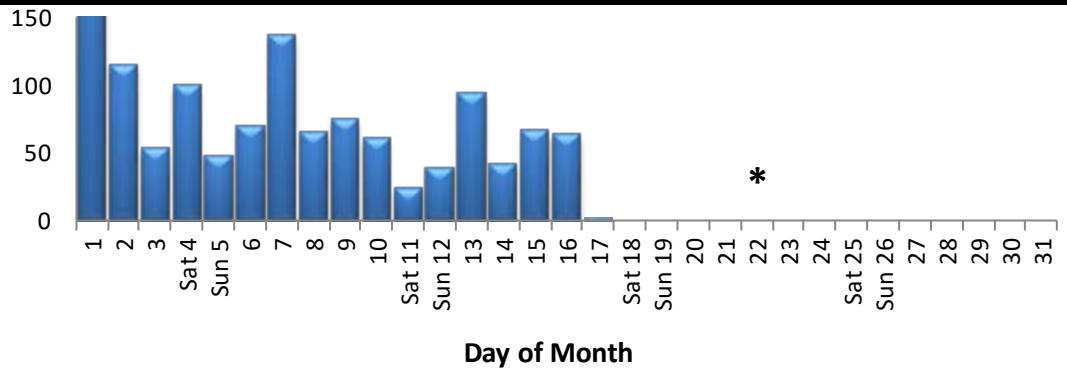
EXECUTED TRAFFIC SIGNAL UPGRADES

| May | Location | Upgrade |
|-----|----------|----------------|
| 08 | 404 | Put into flash |
| 30 | 672 | Put into flash |

Tracks the roadway upgrades executed in Macomb County, including those done by other transportation agencies, also lists a description of the upgrades performed.

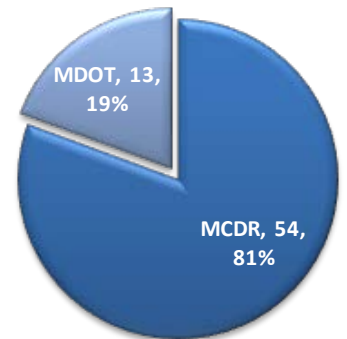
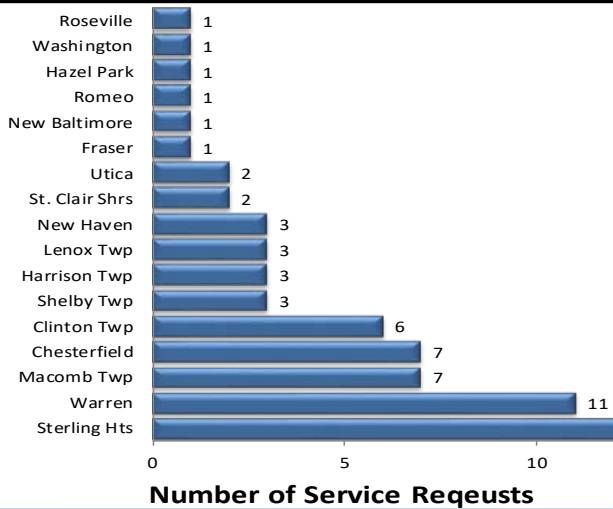


MCDR WEBSITE HITS



A total of 1,323 hits were accrued at <http://roads.macombgov.org/>.
 * Website was down from the 17th - 31st of May for maintenance.

SERVICE REQUESTS PER MUNICIPALITY

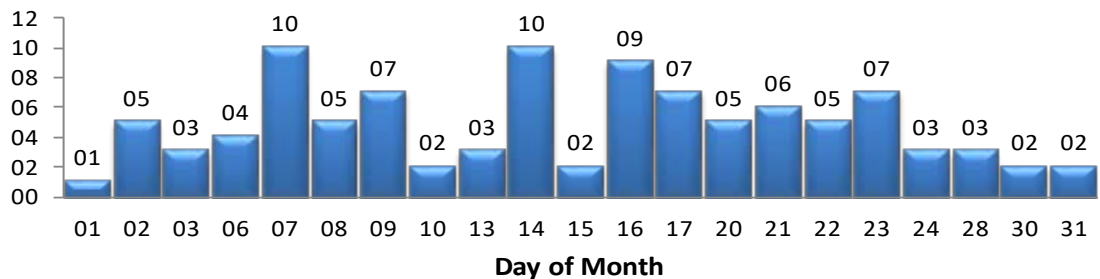


The chart to the left shows how many requests were created per traffic signal location under municipality jurisdiction and the chart to the right shows breakdown of the requests created under MDOT or MCDR / local municipality jurisdiction.

GOVDELIVERY NOTIFICATIONS

In the month of May, the TOC sent out 101 GovDelivery notifications, and increased the number of recipients from 1,438 to 1,468 receiving notifications.

Note: The chart below only shows data for the days GovDelivery notifications were sent from the TOC.



GovDelivery is a tool to notify Macomb County motorists of any incident blocking at least one lane of traffic, or causing traffic issues. The notifications are only sent after the incident has been verified.

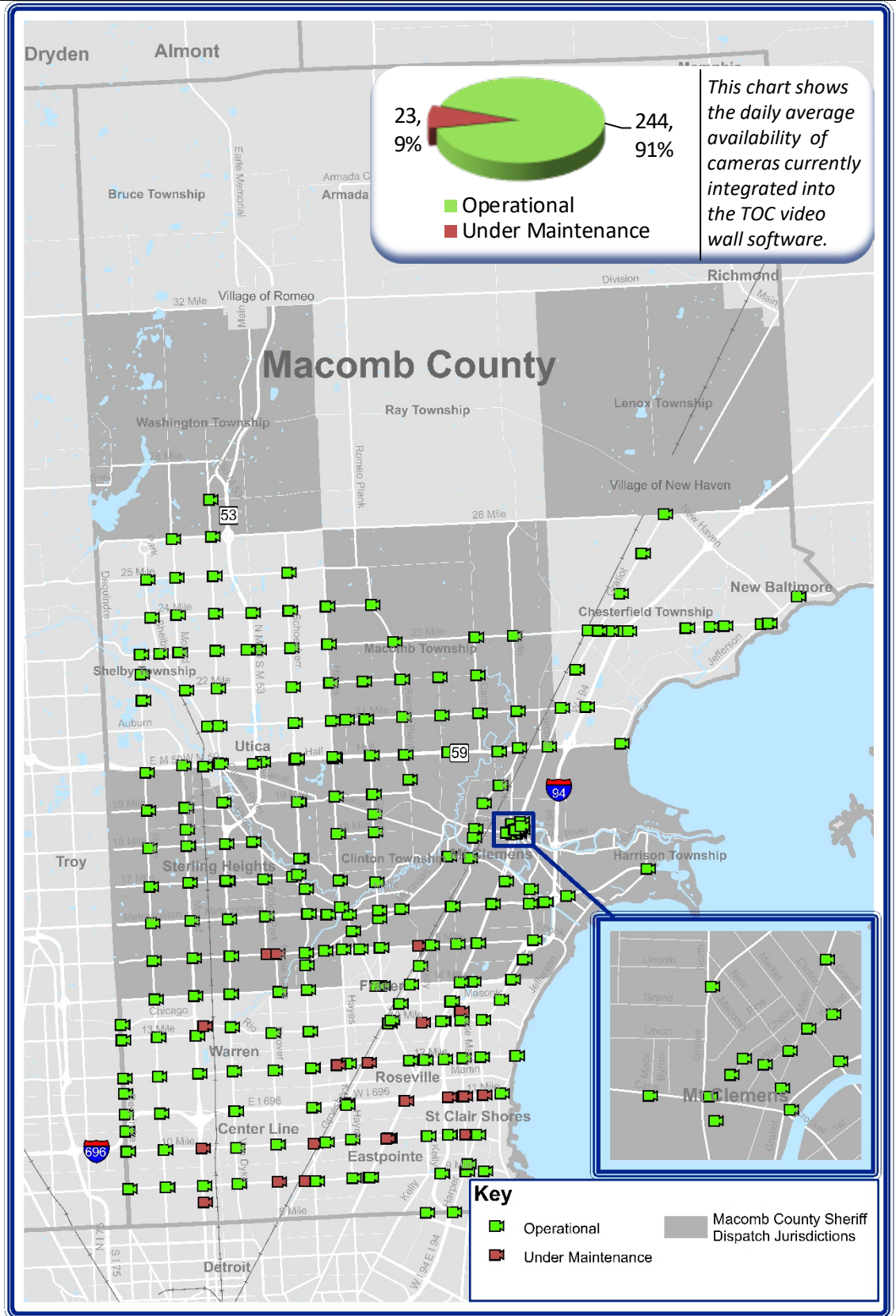
[Sign up for incident notifications on weekdays from 6 a.m. to 6 p.m. causing lane or roadway closures on major Macomb County arterials.](#)



CURRENT CAMERA LOCATIONS

CAMERA COVERAGE

May 2019



This chart shows the daily average availability of cameras currently integrated into the TOC video wall software.

During the target month, the TOC added 1 cameras to be viewed on the video wall.

Cameras considered to have operational communications are shown in green, while cameras found not to have operational communications due to needed maintenance at the time of the snapshot are shown in red. Cameras that are "Planned" have not yet been integrated into TOC video wall software.

