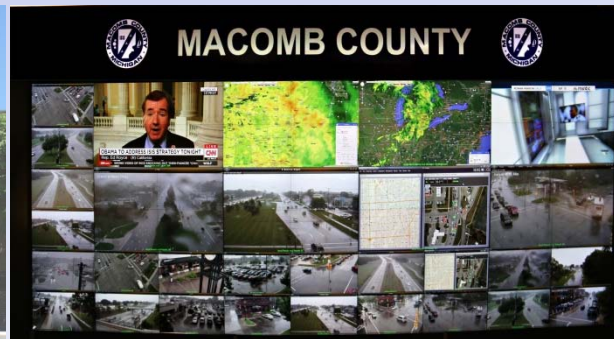


# MACOMB COUNTY DEPARTMENT OF ROADS

## TRAFFIC OPERATIONS CENTER

*"To provide and maintain a reliable real-time traffic operations system, in coordination with county stakeholders, that enables a safe, efficient, and informative travel experience."*

## PERFORMANCE MEASURES



**May 2018**



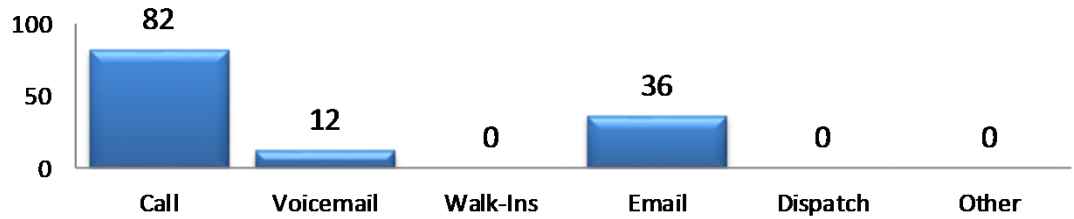
**John Abraham, PhD, PE, PTOE**  
Director of Traffic & Operations  
Macomb County Department of Roads  
117 S Groesbeck Hwy  
Mount Clemens, MI 48043  
586-463-8671  
[JAbraham@RCMCWeb.org](mailto:JAbraham@RCMCWeb.org)

# INFORMATIVE TOC HIGHLIGHT

In the month of May the Control Room Operations Technicians Jimmy Stevens, Matt Manzella and Lead Technician Joyson Peters received their first Citizens Award at the 2018 Sheriff Award Ceremony on May 23<sup>rd</sup> for assisting the sheriff department in their public safety efforts. The Macomb County Department of Roads was the only department outside of Macomb County Sheriff Office and a few private citizens.

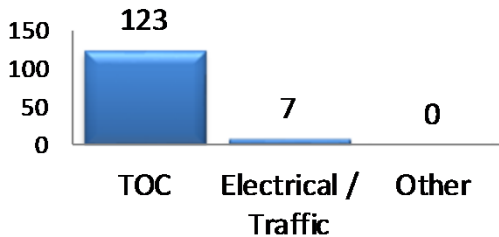
## SERVICE REQUESTS

Source



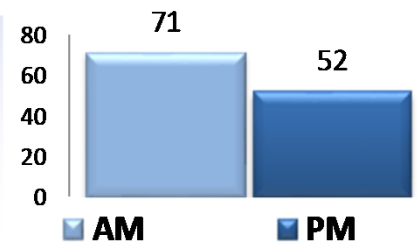
In the month of May, 130 incoming requests regarding traffic signals were received. The 'Source' chart shows how the service request was received by the TOC.

Service Request by Dept.

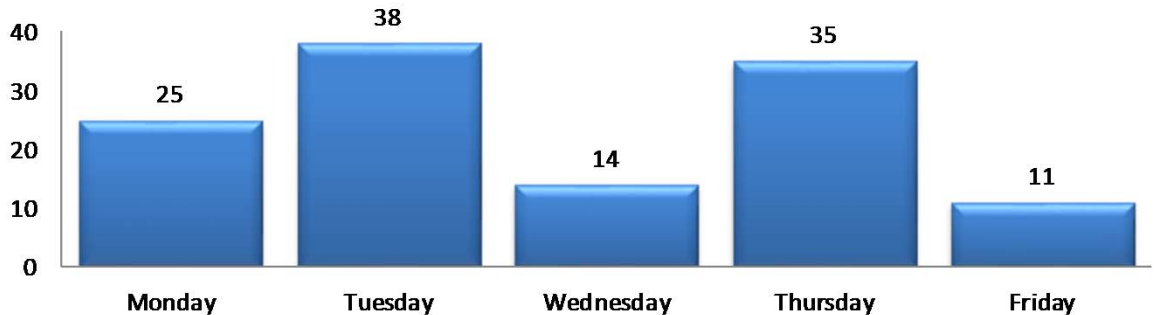


In the month of May, the TOC engineers closed 54 service requests within an average of 4 business days.

TOC AM/PM Requests



Service Request Per Day of Week



TRAFFIC OPERATIONS

May 2018

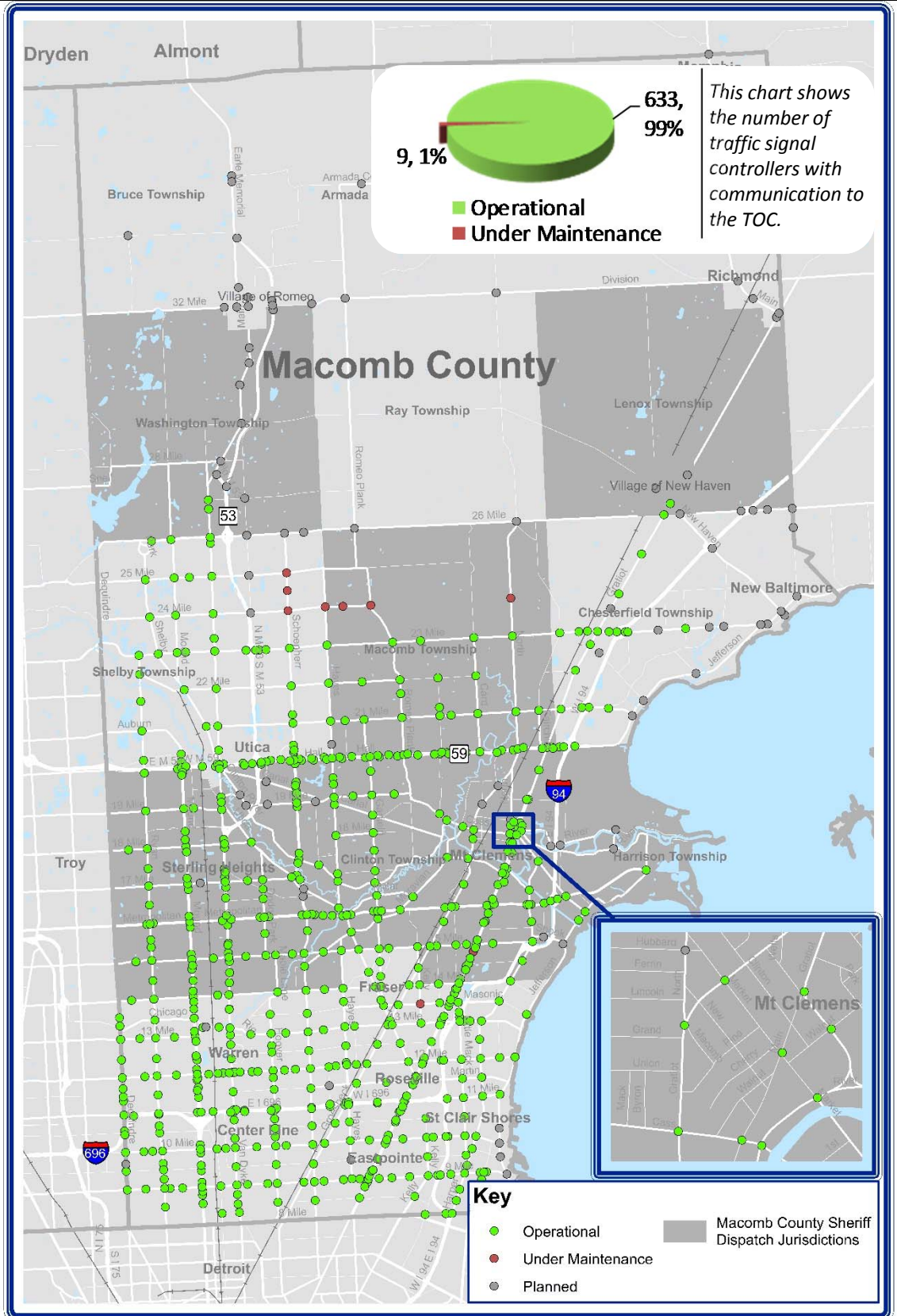


AECOM

# REGIONAL COMMUNICATIONS SUMMARY

## ITS MAINTENANCE

May 2018



**During the target month, the TOC added 0 intersections to our operational communications network.**

Locations considered to have operational communications are shown in **green**, while locations found not to have operational communications due to needed maintenance at the time of the snapshot are shown in **red**. Locations that are "Planned" have not yet been integrated into TOC network.



## COUNTY CORRIDOR COMMUNICATIONS AVAILABILITY

Corridor	Current Month	Previous Month	Change
9 Mile	100%	100%	0%
14 Mile	100%	100%	0%
15 Mile	100%	100%	0%
Metro Parkway	100%	100%	0%
Hall (M-59)	100%	98%	2%
Ryan	100%	100%	0%
Mound	100%	100%	0%
Hoover	100%	100%	0%
Schoenherr	92%	91%	1%
Hayes	96%	96%	0%
Gratiot (M-3)	98%	96%	2%
Harper	100%	100%	0%

The table above represents a one-time monthly snapshot of communications along major corridors in Macomb County. Corridors which are considered to have operational communications (90% and above) are shown in **green**, while corridors found not to have operational communications (<90%) at the time of the snapshot are shown in **red**.

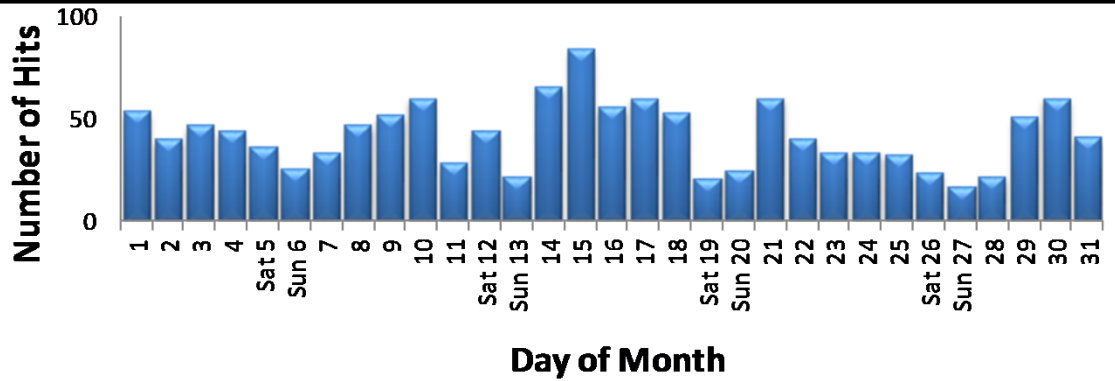
## EXECUTED TRAFFIC SIGNAL UPGRADES

May	Location	Upgrade
01	0639	WB Metro Parkway at XO East of Schoenherr

Tracks the roadway upgrades executed in Macomb County, including those done by other transportation agencies, also lists a description of the upgrades performed.

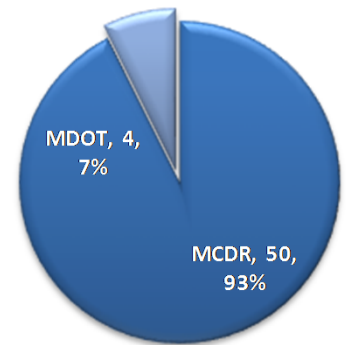
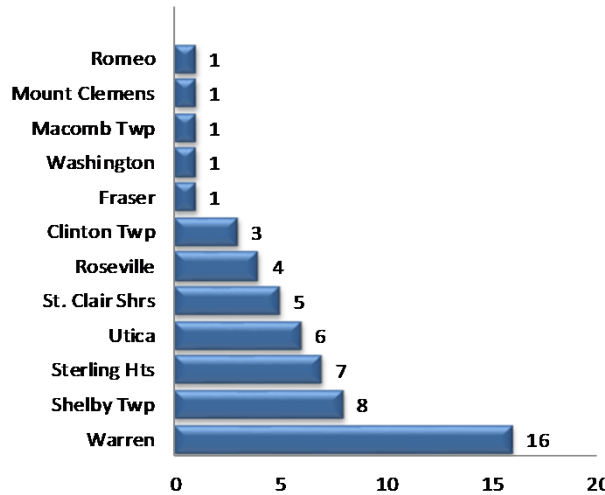


## MCDR WEBSITE HITS



A total of 1,316 hits were accrued at <http://roads.macombgov.org/>.

## SERVICE REQUESTS PER MUNICIPALITY

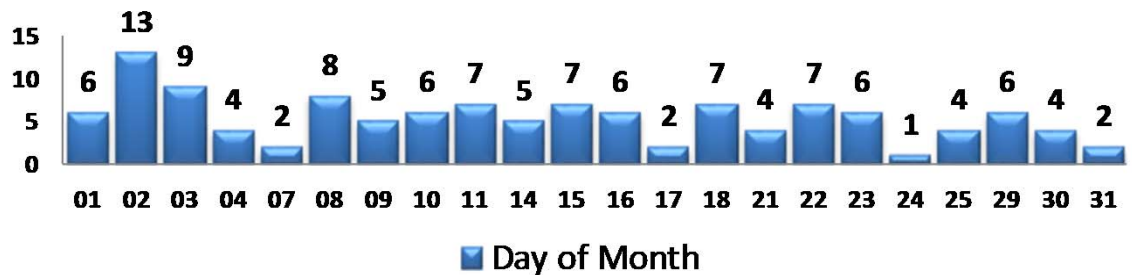


The chart to the left shows how many requests were created per traffic signal location under municipality jurisdiction and the chart to the right shows breakdown of the requests created under MDOT or MCDR / local municipality jurisdiction.

## GOVDELIVERY NOTIFICATIONS

In the month of May, the TOC sent out 121 GovDelivery notifications, and increased the number of recipients from 1,100 to 1,137 receiving notifications.

Note: The chart below only shows data for the days GovDelivery notifications were sent from the TOC.



GovDelivery is a tool to notify Macomb County motorists of any incident blocking at least one lane of traffic, or causing traffic issues. The notifications are only sent after the incident has been verified.

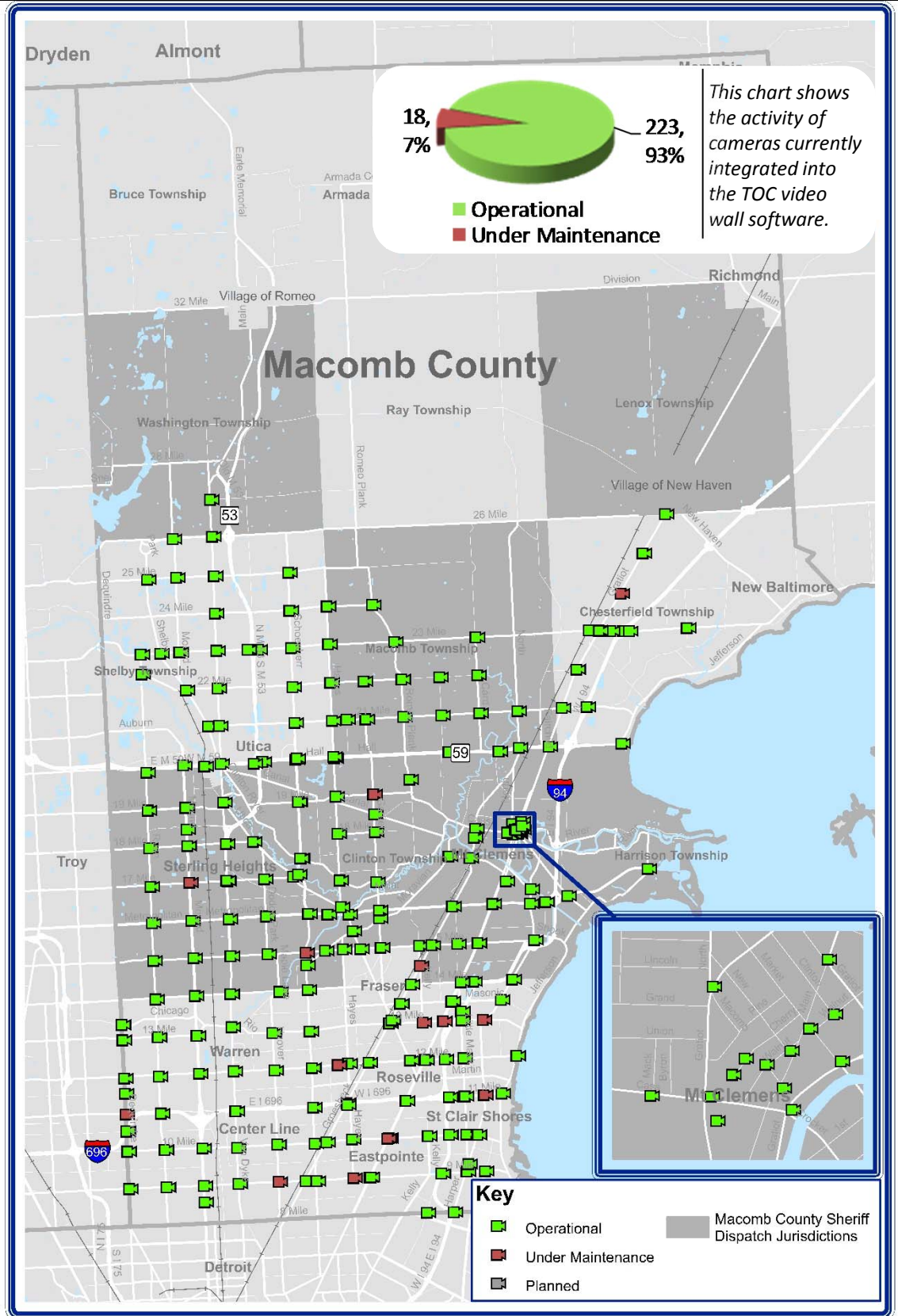
[Sign up for incident notifications on weekdays from 6 a.m. to 6 p.m. causing lane or roadway closures on major Macomb County arterials.](#)



# CURRENT CAMERA LOCATIONS

## CAMERA COVERAGE

May 2018



**During the target month, the TOC added 4 cameras to be viewed on the video wall.**

Cameras considered to have operational communications are shown in **green**, while cameras found not to have operational communications due to needed maintenance at the time of the snapshot are shown in **red**. Cameras that are "Planned" have not yet been integrated into TOC video wall software.

