

# MACOMB COUNTY DEPARTMENT OF ROADS

## TRAFFIC OPERATIONS CENTER

*"To provide and maintain a reliable real-time traffic operations system, in coordination with county stakeholders, that enables a safe, efficient, and informative travel experience."*  
- MCDR TOC Mission Statement

## PERFORMANCE MEASURES



March 2021

AECOM

WSP

INTEGRAL  
BLUE



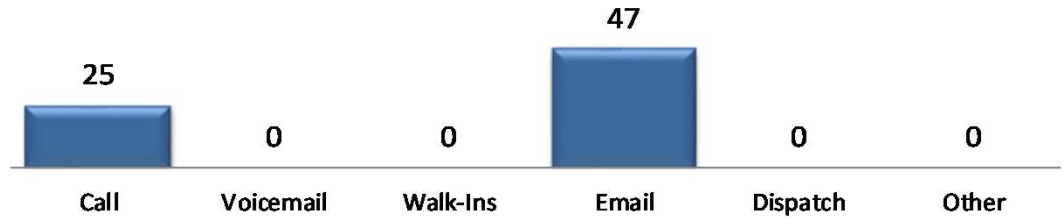
**John Abraham, PhD, PE, PTOE**  
Director of Traffic & Operations  
Macomb County Department of Roads  
117 S Groesbeck Hwy  
Mount Clemens, MI 48043  
586-463-8671  
[JAbraham@RCMCWeb.org](mailto:JAbraham@RCMCWeb.org)

# MONTHLY TOC HIGHLIGHT

During the month of March, construction and network maintenance took precedence. Construction continued to expand within the county, with the work zone along Gratiot (M-3), between 11 Mile Road and 14 Mile Road, requiring the development of construction-based signal timings. Maintenance activities focused on the repair of infrastructure knocked-down in crashes, network communications overhauls, and preventative maintenance to the intelligent transportation systems infrastructure.

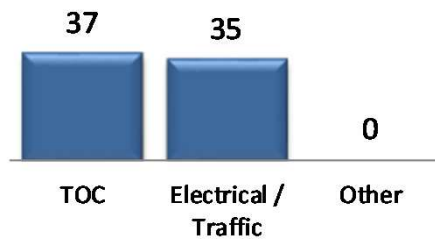
## SERVICE REQUESTS

### Service Request Source



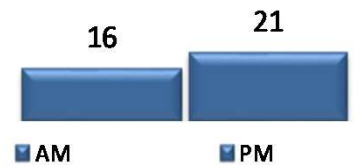
In the month of March, 72 incoming requests regarding traffic signals were received.

### Service Request by Dept.

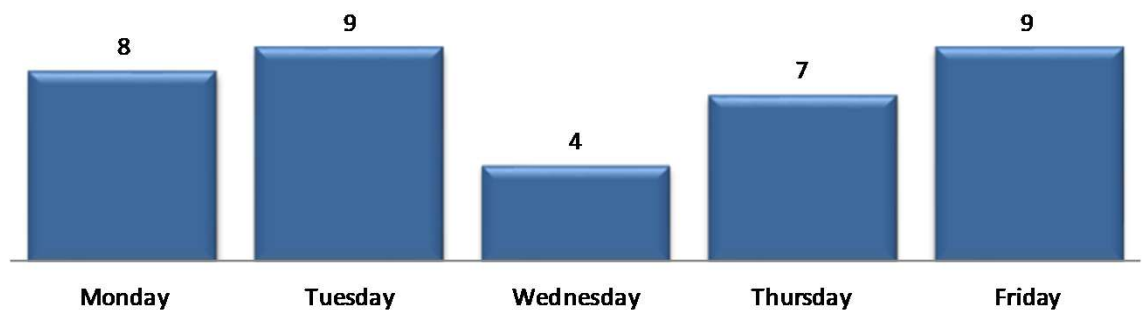


In the month of March, TOC engineers closed 38 service requests within an average of 8 business days.

### TOC by Time of Day



### Service Request Per Day of Week



TRAFFIC OPERATIONS

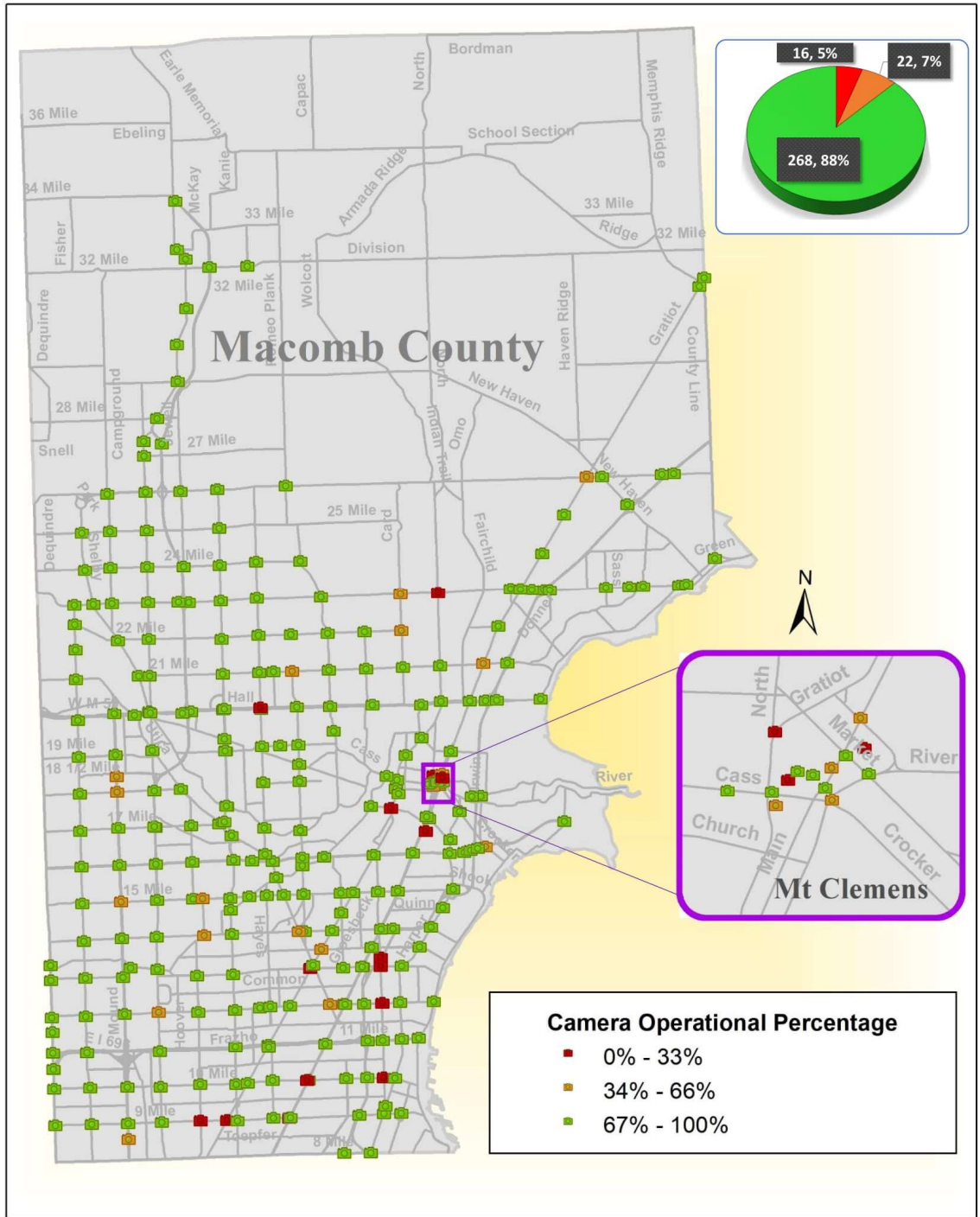
March 2021



# CCTV TRAFFIC CAMERA SUMMARY

## CAMERA COVERAGE

March 2021



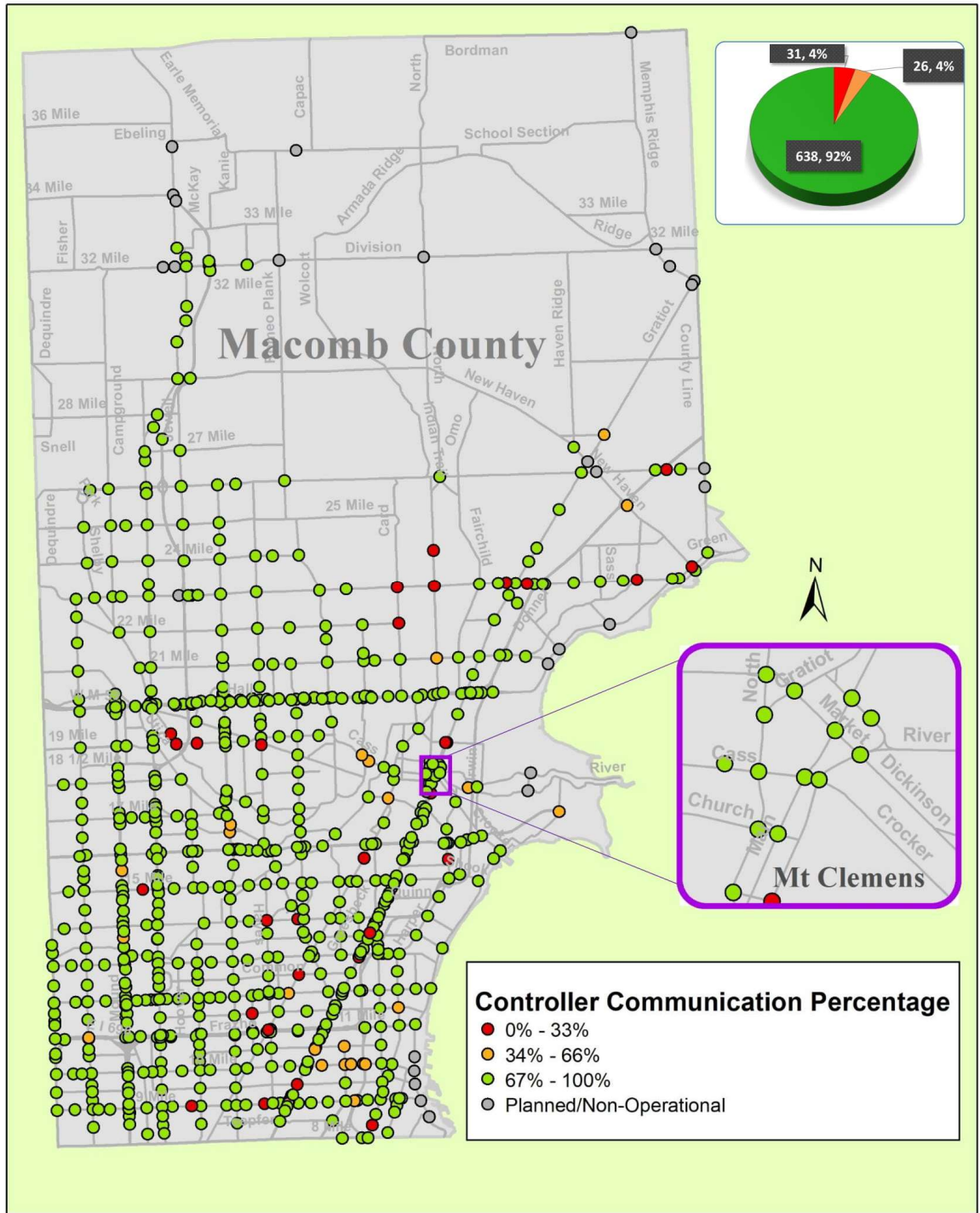
The map above represents the CCTV camera operational percentages for the month of March 2021.



# REGIONAL COMMUNICATIONS SUMMARY

## ITS MAINTENANCE

March 2021



The map above represents the communication availability percentages of Traffic Signal Controllers for the month of March 2021.



# HIGH IMPACT CORRIDOR COMMUNICATIONS AVAILABILITY

Corridor	Current Month	Previous Month	Change
9 Mile	91%	95%	-4%
14 Mile	99%	98%	1%
15 Mile	92%	98%	-6%
Metro Parkway	99%	97%	2%
Hall (M-59)	99%	97%	2%
Dequindre	97%	98%	-1%
Ryan	98%	96%	2%
Mound	98%	96%	2%
Hoover	87%	99%	-12%
Schoenherr	95%	95%	0%
Hayes	91%	89%	2%
Gratiot (M-3)	92%	95%	-3%
Harper	98%	99%	-1%

*The table above represents a one-time monthly snapshot of communications along major corridors in Macomb County.*

## FIELD WORK

*19 sites visited by TOC staff and 6 sites visited by IT/ITS maintenance technicians and the MCDR Electrical Group in March 2021.*

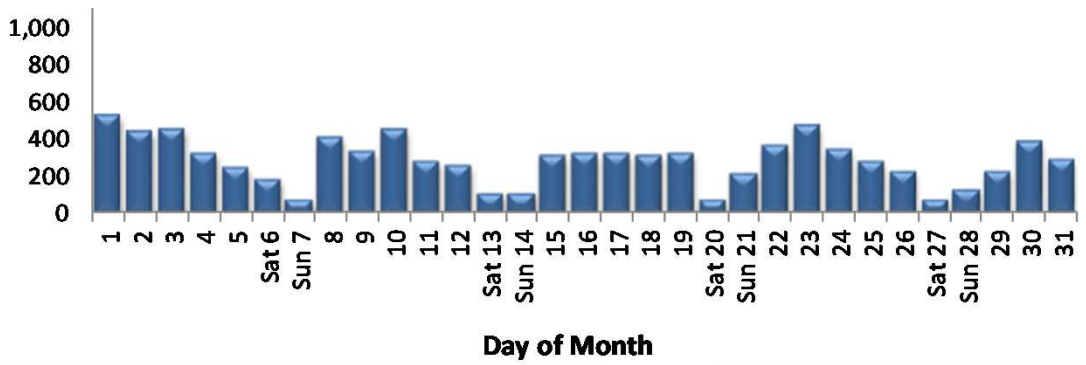
## FIELD WORK

Time of signal change	Loc #	Intersection	Reason for signal change
03/05/2021 8:59	622	Harrington/Moravian	Service Request
03/08/2021 8:54	232	Hoover/Stephens	Construction
03/08/2021 9:04	875	Corporate Drive/Shelby Parkway/23 Mile Road	Service Request
03/10/2021 17:28	262	Marmon/Nine Mile Road	Service Request
03/11/2021 11:54	229	Hollister/Van Dyke	Special Event
03/11/2021 14:32	276	Heydenreich/21 Mile Road	Service Request

*Traffic signal changes performed by TOC engineers*

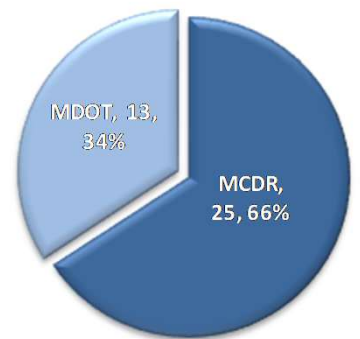
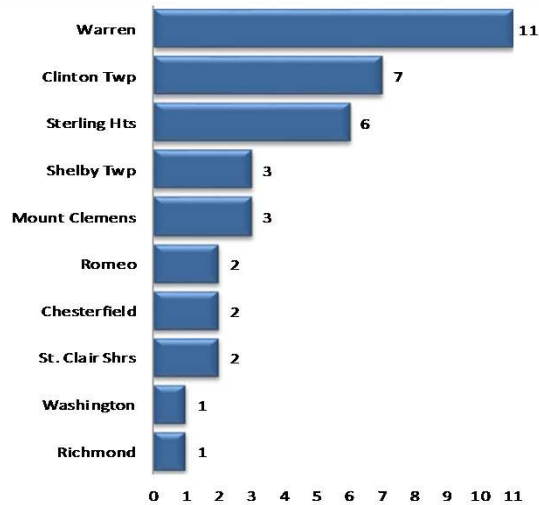


## MCDR WEBSITE HITS



A total of **8,784** hits were accrued at <http://roads.macombgov.org/>.

## SERVICE REQUESTS PER MUNICIPALITY

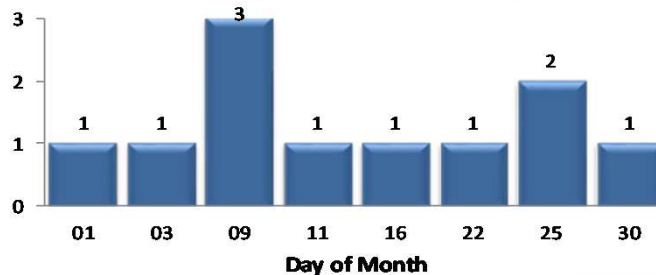


The chart to the left shows how many requests were created per traffic signal location under municipality jurisdiction. The chart to the right shows breakdown of the requests created under MDOT or MCDR / local municipality jurisdiction.

## GOVDELIVERY NOTIFICATIONS

In the month of March, the TOC sent out **11** GovDelivery notifications, and increased the number of recipients from **2,444** to **2,491** receiving notifications.

Note: The chart below only shows data for the days GovDelivery notifications were sent from the TOC.



GovDelivery is a tool to notify Macomb County motorists of any incident blocking at least one lane of traffic or causing traffic issues. The notifications are sent after an incident has been verified.

[Sign up for incident notifications on weekdays from 6 a.m. to 6 p.m. causing lane or roadway closures on major Macomb County arterials.](#)

