

MACOMB COUNTY DEPARTMENT OF ROADS

TRAFFIC OPERATIONS CENTER

"To provide and maintain a reliable real-time traffic operations system, in coordination with county stakeholders, that enables a safe, efficient, and informative travel experience."
- MCDR-TOC Mission Statement

PERFORMANCE MEASURES



March 2020

AECOM

WSP

INTEGRAL
BLUE



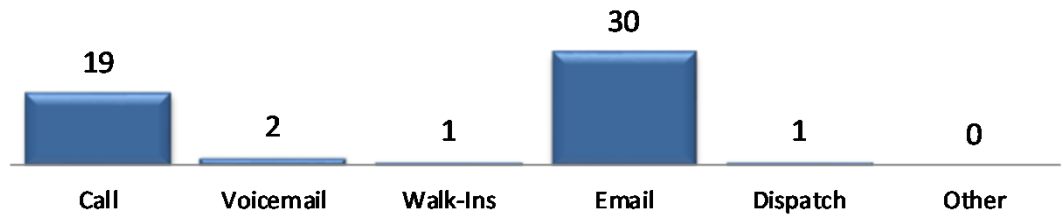
John Abraham, PhD, PE, PTOE
Director of Traffic & Operations
Macomb County Department of Roads
117 S Groesbeck Hwy
Mount Clemens, MI 48043
586-463-8671
JAbraham@RCMCWeb.org

MONTHLY TOC HIGHLIGHT

In the month of March, Macomb County, the State of Michigan, and the United States Federal Government declared States of Emergency in response to the COVID-19 pandemic, and Governor Whitmer issued a "Stay Home, Stay Safe" executive order. As guidance on social distancing has been expanding, staff has worked diligently to ensure there is no reduction in the level of service provided to the citizens of Macomb County as they support the critical infrastructure.

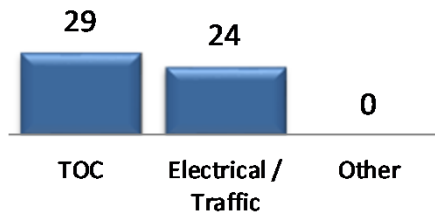
SERVICE REQUESTS

Service Request Source



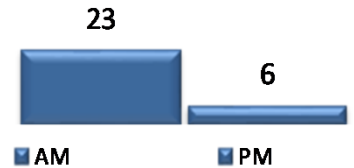
In the month of March, 43 incoming requests regarding traffic signals were received.

Service Request by Dept.

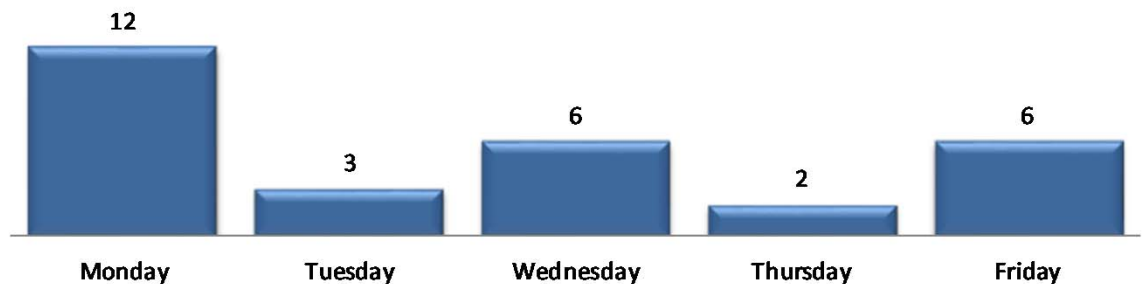


In the month of March, TOC engineers closed 34 service requests within an average of 7 business days.

TOC by Time of Day



Service Request Per Day of Week



TRAFFIC OPERATIONS

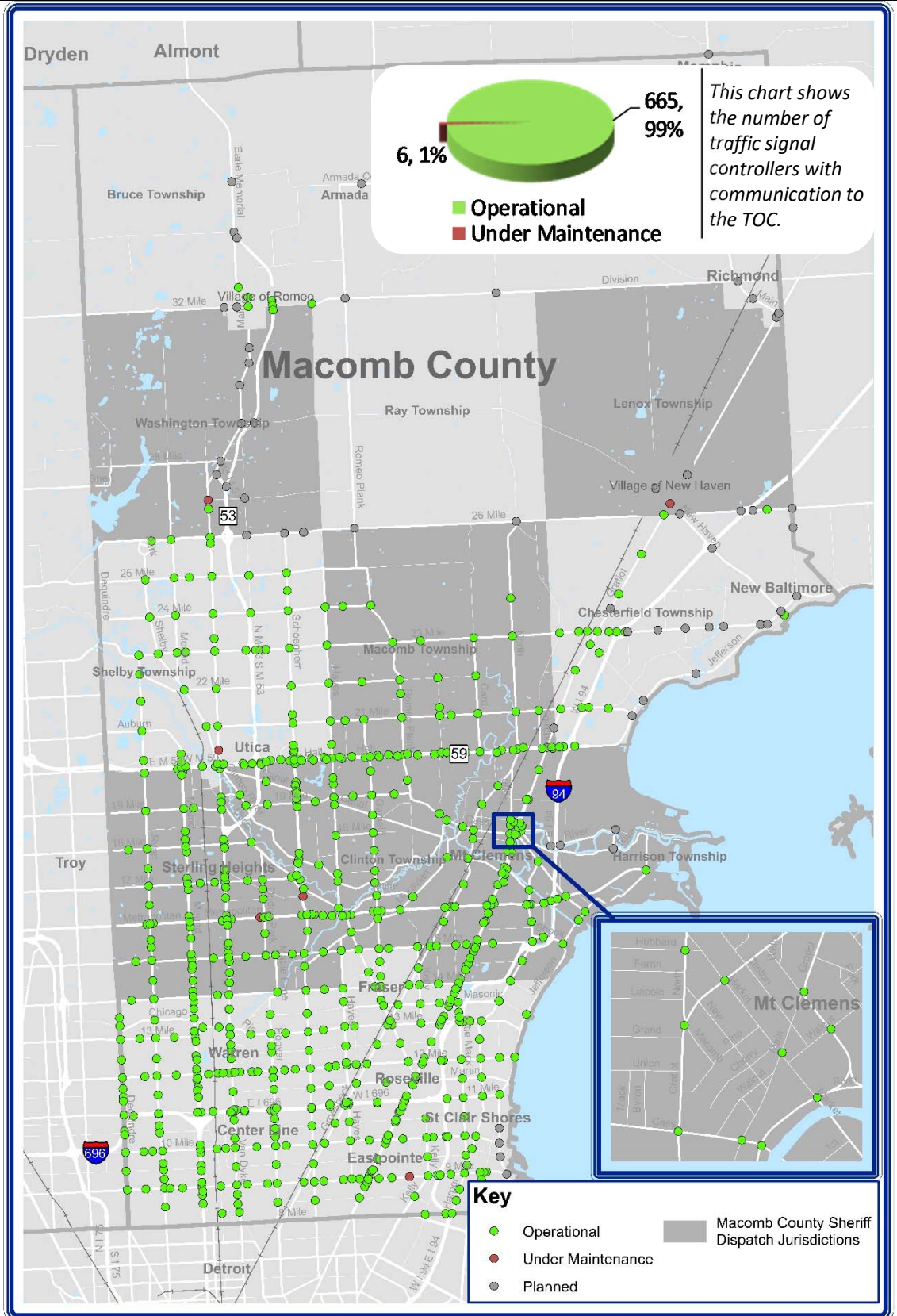
March 2020



REGIONAL COMMUNICATIONS SUMMARY

ITS MAINTENANCE

March 2020



During the target month, the TOC added 14 intersections to the operational communications network.

Locations considered to have operational communications are shown in green, while locations found not to have operational communications due to needed maintenance are shown in red. Locations that are "Planned" have not yet been integrated into TOC network.



HIGH IMPACT CORRIDOR

COMMUNICATIONS AVAILABILITY

Corridor	Current Month	Previous Month	Change
9 Mile	96%	96%	0%
14 Mile	100%	81%	19%
15 Mile	100%	100%	0%
Metro Parkway	97%	97%	0%
Hall (M-59)	100%	100%	0%
Dequindre	100%	100%	0%
Ryan	100%	100%	0%
Mound	100%	100%	0%
Hoover	100%	100%	0%
Schoenherr	97%	92%	5%
Hayes	100%	92%	8%
Gratiot (M-3)	98%	98%	0%
Harper	100%	100%	0%

The table above represents a one-time monthly snapshot of communications along major corridors in Macomb County. Corridors which are considered to have operational communications (90% and above) are shown in **green**, while corridors found not to have operational communications (<90%) at the time of the snapshot are shown in **red**.

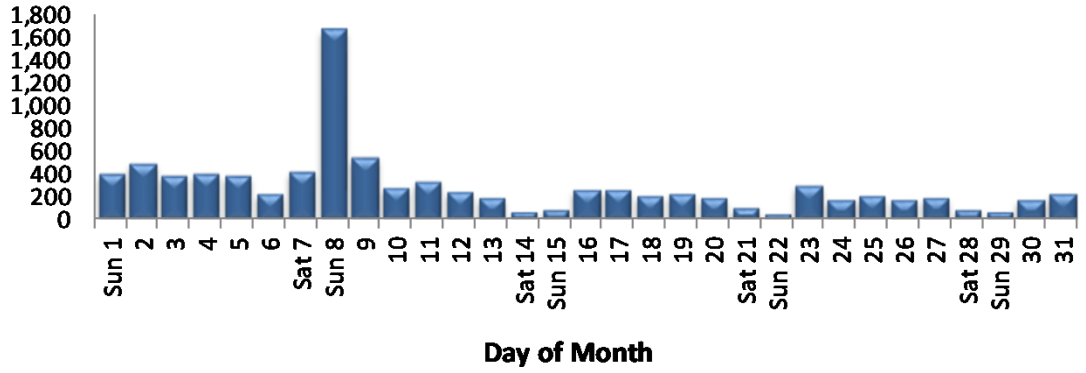
EXECUTED TRAFFIC SIGNAL UPGRADES

March	Location	Upgrade
4th	18 Mile @ Mound	Construction Project - Conversion to new traffic signal
11th	26 Mile @ Jewell	Construction Project - Conversion to new traffic signal
16th	23 Mile @ Fairchild	Construction Project - Conversion to new traffic signal
17th	23 Mile @ Mound	Construction Project - Conversion to new traffic signal

Tracks the roadway upgrades executed in Macomb County, including those done by other transportation agencies, also lists a description of the upgrades performed.

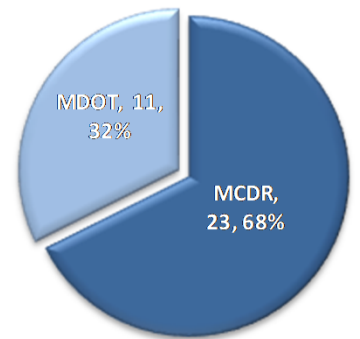
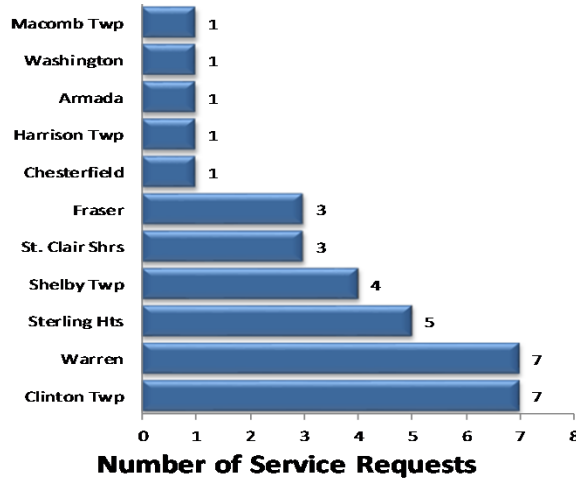


MCDR WEBSITE HITS



A total of 9,009 hits were accrued at <http://roads.macombgov.org/>.

SERVICE REQUESTS PER MUNICIPALITY

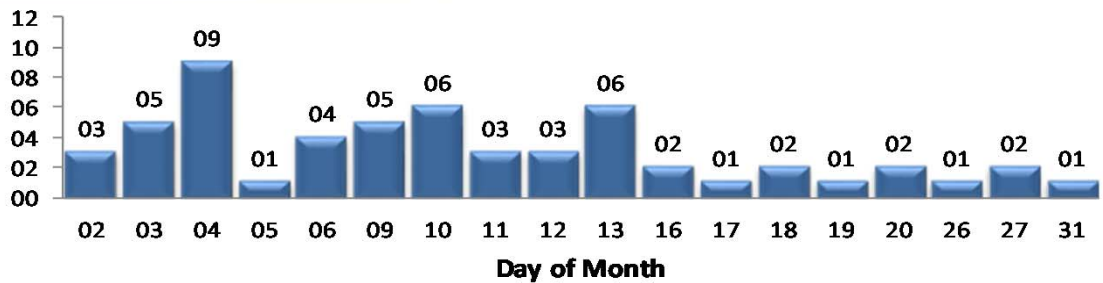


The chart to the left shows how many requests were created per traffic signal location under municipality jurisdiction. The chart to the right shows breakdown of the requests created under MDOT or MCDR / local municipality jurisdiction.

GOVDELIVERY NOTIFICATIONS

In the month of March, the TOC sent out 57 GovDelivery notifications, and increased the number of recipients from 1,833 to 1,904 receiving notifications.

Note: The chart below only shows data for the days GovDelivery notifications were sent from the TOC.



GovDelivery is a tool to notify Macomb County motorists of any incident blocking at least one lane of traffic or causing traffic issues. The notifications are sent after an incident has been verified.

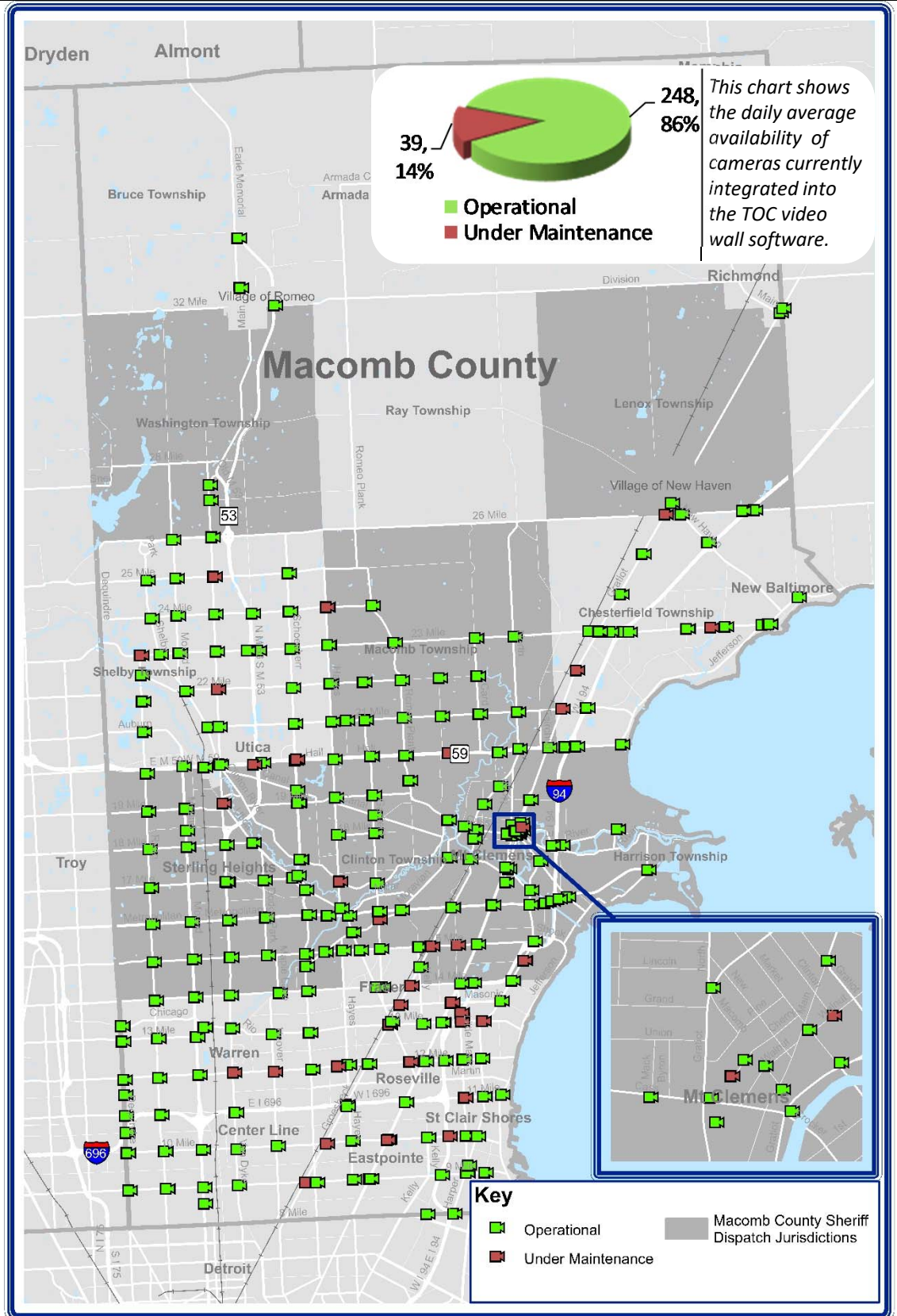
[Sign up for incident notifications on weekdays from 6 a.m. to 6 p.m. causing lane or roadway closures on major Macomb County arterials.](#)



CURRENT CAMERA LOCATIONS

CAMERA COVERAGE

March 2020



During the target month, the TOC added 0 cameras to be viewed on the video wall.

Cameras considered to have operational communications are shown in green, while cameras found not to have operational communications due to needed maintenance are shown in red.

