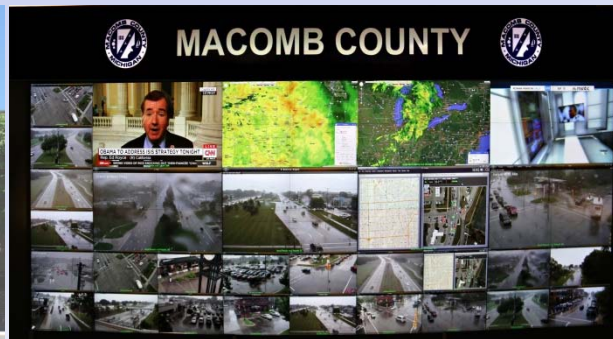


MACOMB COUNTY DEPARTMENT OF ROADS

TRAFFIC OPERATIONS CENTER

"To provide and maintain a reliable real-time traffic operations system, in coordination with county stakeholders, that enables a safe, efficient, and informative travel experience."

PERFORMANCE MEASURES



March 2018



John Abraham, PhD, PE, PTOE
Director of Traffic & Operations
Macomb County Department of Roads
117 S Groesbeck Hwy
Mount Clemens, MI 48043
586-463-8671
JAbraham@RCMCWeb.org

INFORMATIVE TOC HIGHLIGHT

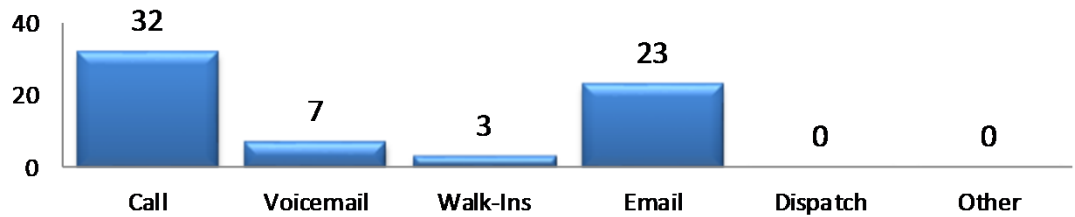
In the month of March, the Macomb County Department of Roads Traffic Operations Center together with Michigan Department of Transportation has successfully kicked-off the second phase of the M-59 reconstruction project. MCDR TOC engineers have been working closely with MDOT, contractors and various internal departments on this effort. The TOC continues to provide data and metrics to MovingMacomb.org, a website with information about current travel times and closures increasing public awareness during the first phase of this major project.

TRAFFIC OPERATIONS

March 2018

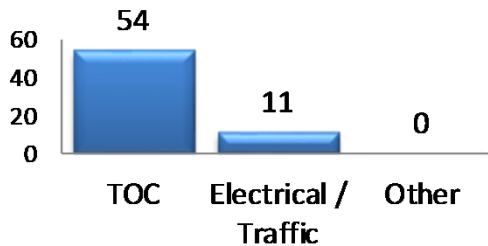
SERVICE REQUESTS

Source



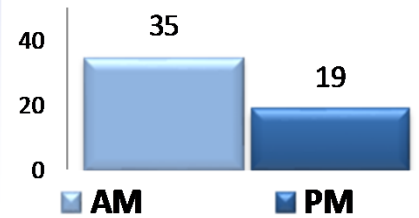
In the month of March, 65 incoming requests regarding traffic signals were received. The 'Source' chart shows how the service request was received by the TOC.

Service Request by Dept.

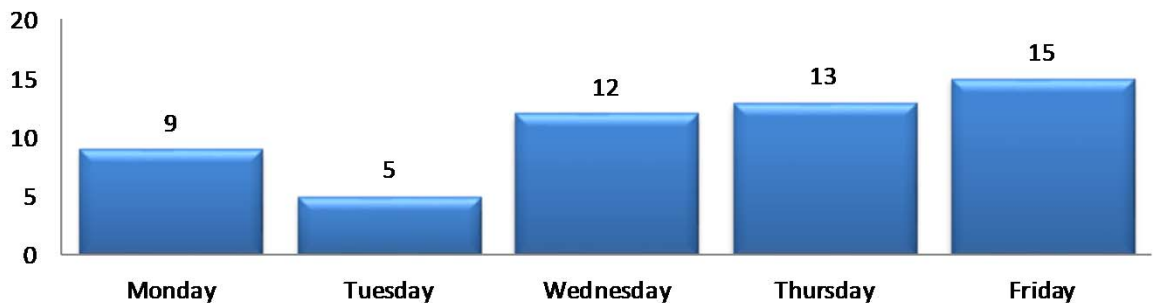


In the month of March, the TOC engineers closed 66 service requests within an average of 7 business days.

TOC AM/PM Requests



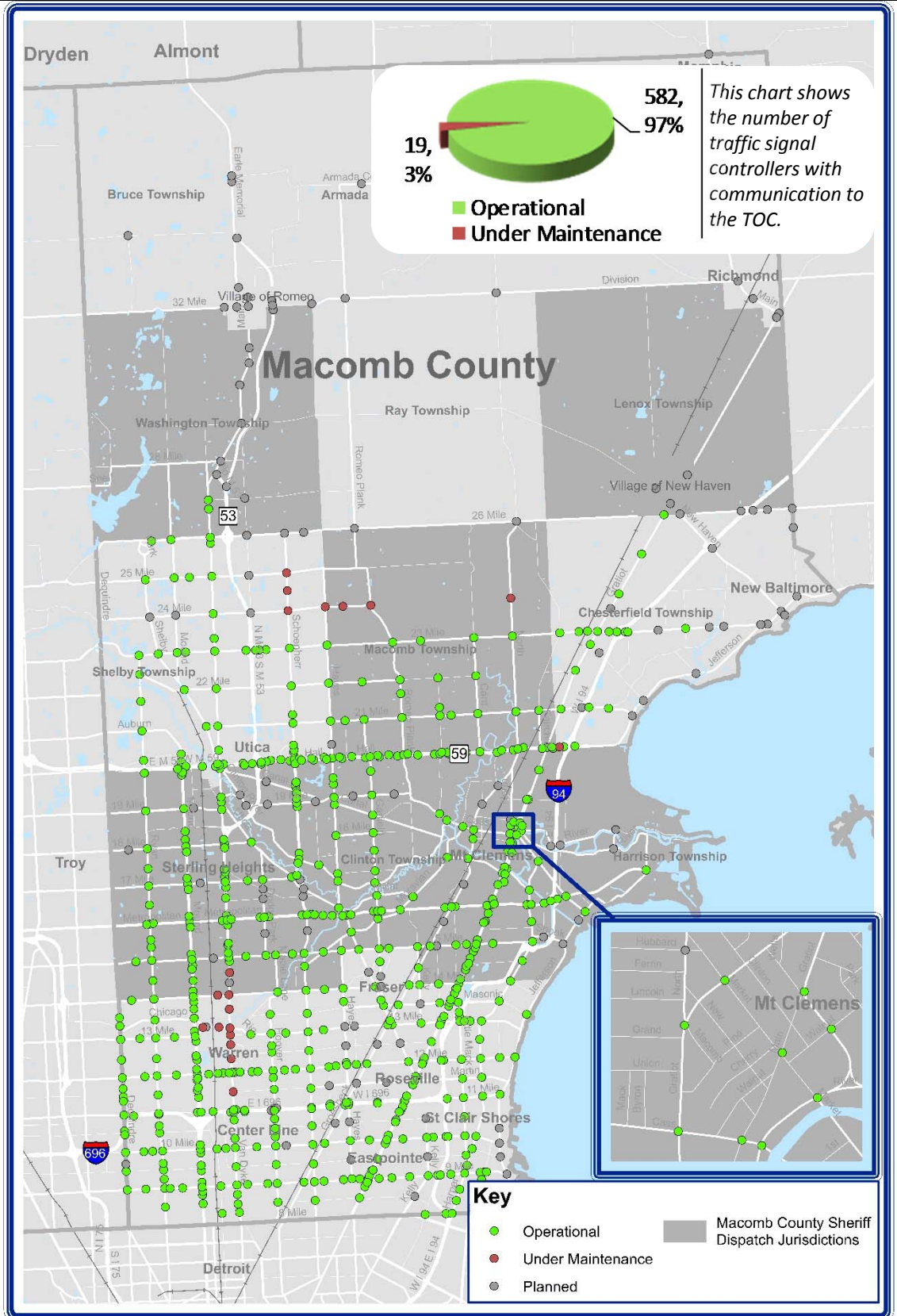
Service Request Per Day of Week



REGIONAL COMMUNICATIONS SUMMARY

ITS MAINTENANCE

March 2018



During the target month, the TOC added 0 intersections to our operational communications network.

Locations considered to have operational communications are shown in **green**, while locations found not to have operational communications due to needed maintenance at the time of the snapshot are shown in **red**. Locations that are "Planned" have not yet been integrated into TOC network.



COUNTY CORRIDOR COMMUNICATIONS

AVAILABILITY

Corridor	Current Month	Previous Month	Change
9 Mile	100%	96%	4%
14 Mile	86%	93%	-7%
15 Mile	100%	100%	0%
Metro Parkway	100%	97%	3%
Hall (M-59)	98%	89%	9%
Dequindre	100%	100%	0%
Ryan	100%	87%	13%
Mound	100%	92%	8%
Hoover	100%	100%	0%
Schoenherr	91%	91%	0%
Hayes	95%	95%	0%
Gratiot (M-3)	100%	100%	0%
Harper	100%	100%	0%

The table above represents a one-time monthly snapshot of communications along major corridors in Macomb County. Corridors which are considered to have operational communications (90% and above) are shown in **green**, while corridors found not to have operational communications (<90%) at the time of the snapshot are shown in **red**.

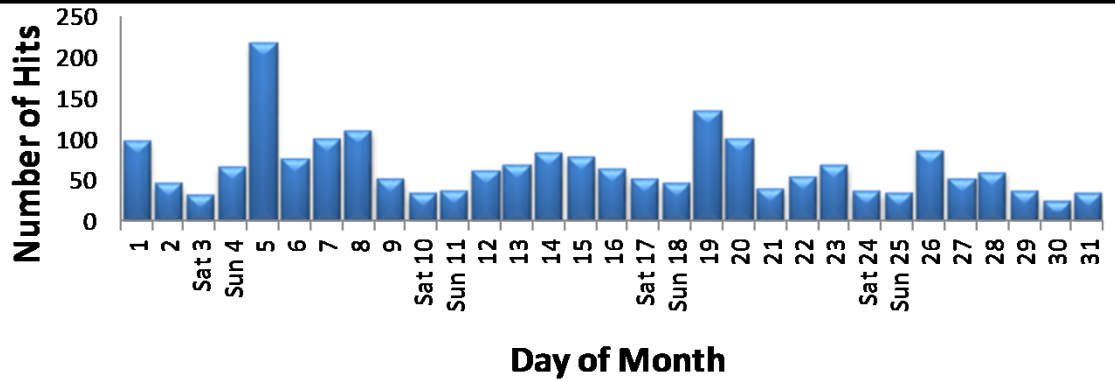
EXECUTED TRAFFIC SIGNAL UPGRADES

March	Location	Upgrade
28	0759 T	EB M-59 (Hall) at XOW of Garfield
28	0762 T	EB M-59 (Hall) at XOW of Romeo Plank

Tracks the roadway upgrades executed in Macomb County, including those done by other transportation agencies, also lists a description of the upgrades performed.

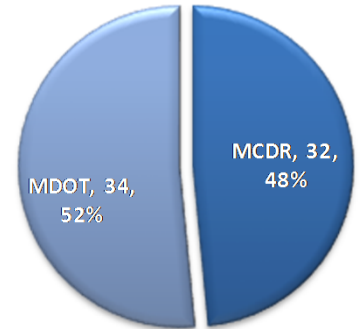
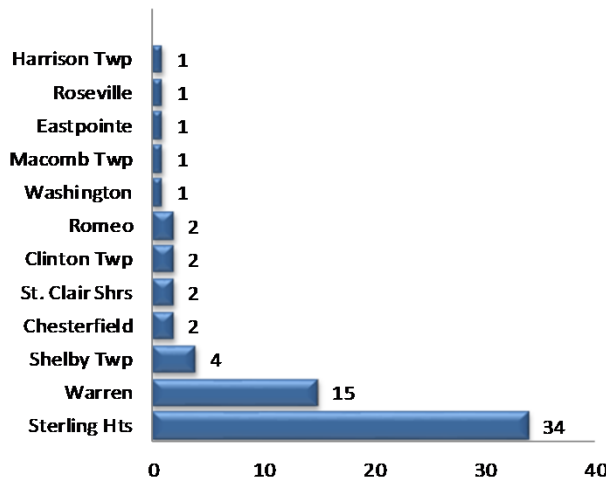


MCDR WEBSITE HITS



A total of 2,102 hits were accrued at <http://roads.macombgov.org/>.

SERVICE REQUESTS PER MUNICIPALITY



The chart to the left shows how many requests were created per traffic signal location under municipality jurisdiction and the chart to the right shows breakdown of the requests created under MDOT or MCDR / local municipality jurisdiction.

GOVDELIVERY NOTIFICATIONS

In the month of March, the TOC sent out 106 GovDelivery notifications, and increased the number of recipients from 1,046 to 1,070 receiving notifications.

Note: The chart below only shows data for the days GovDelivery notifications were sent from the TOC.



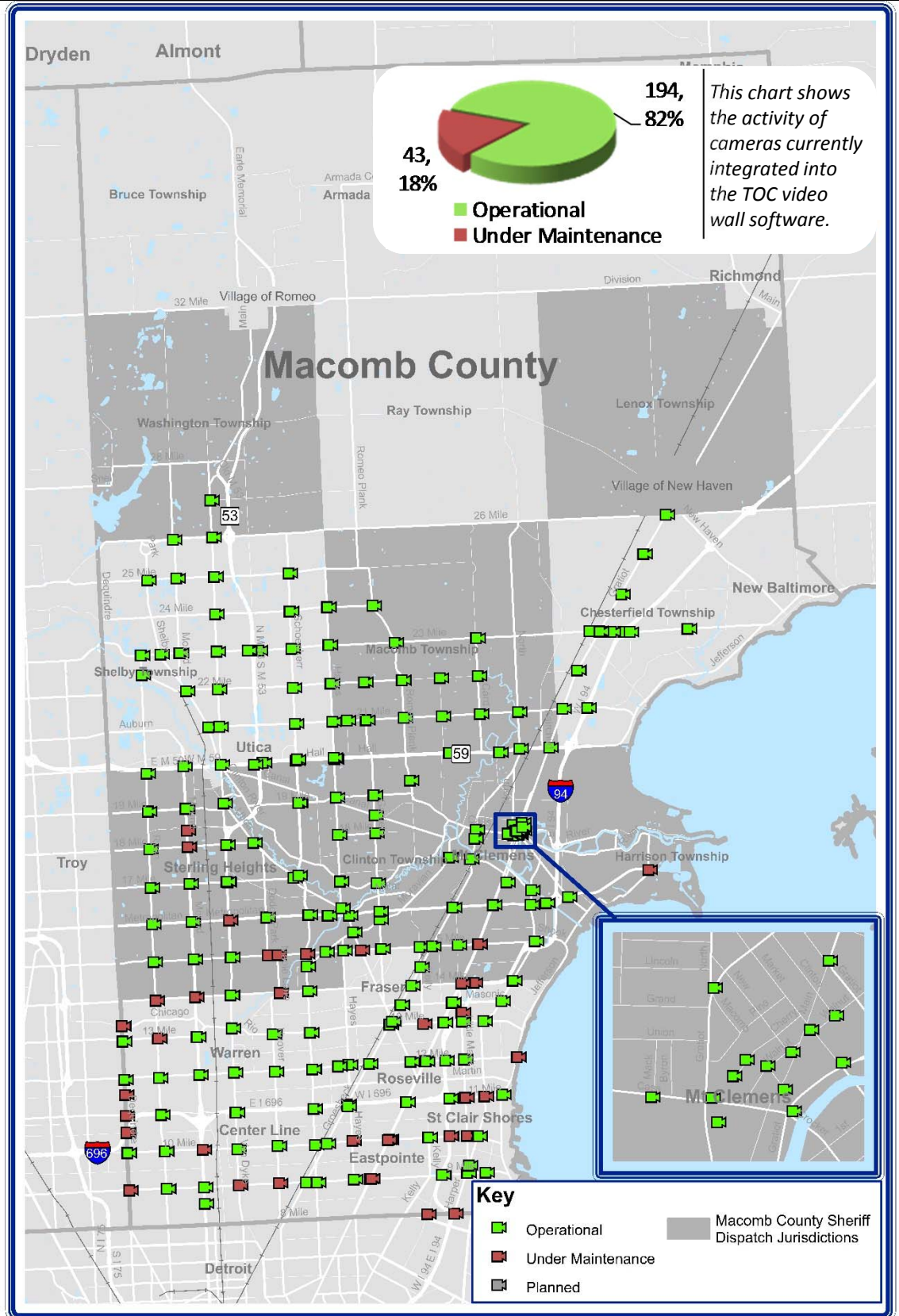
GovDelivery is a tool to notify Macomb County motorists of any incident blocking at least one lane of traffic, or causing traffic issues. The notifications are only sent after the incident has been verified.

[Sign up for incident notifications on weekdays from 6 a.m. to 6 p.m. causing lane or roadway closures on major Macomb County arterials.](#)

CURRENT CAMERA LOCATIONS

CAMERA COVERAGE

March 2018



During the target month, the TOC added 0 cameras to be viewed on the video wall.

Cameras considered to have operational communications are shown in **green**, while cameras found not to have operational communications due to needed maintenance at the time of the snapshot are shown in **red**. Cameras that are "Planned" have not yet been integrated into TOC video wall software.

