

MACOMB COUNTY DEPARTMENT OF ROADS

TRAFFIC OPERATIONS CENTER

"To provide and maintain a reliable real-time traffic operations system, in coordination with county stakeholders, that enables a safe, efficient, and informative travel experience."
- MCDR-TOC Mission Statement

PERFORMANCE MEASURES



June 2020

AECOM

WSP

**INTEGRAL
BLUE**



John Abraham, PhD, PE, PTOE
Director of Traffic & Operations
Macomb County Department of Roads
117 S Groesbeck Hwy
Mount Clemens, MI 48043
586-463-8671
JAbraham@RCMCWeb.org

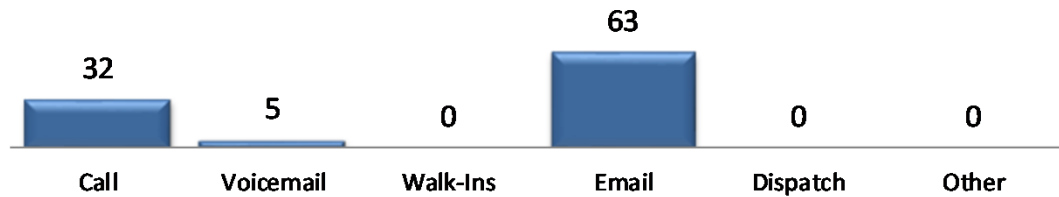
MONTHLY TOC HIGHLIGHT

In the month of June, the MCDR TOC assisted Macomb County Sheriff Dispatch with CCTV coverage of planned protests. The first rally took place June 2nd on Van Dyke (M-53) in the city of Warren. A large protest with over 4,000 participants occurred June 6th when protesters marched on M-59 between Schoenherr and Garfield. On June 10th a rally was held in downtown Mount Clemens which concluded with a meet-and-greet with the Macomb County Sheriff. On June 11th a march where the route encompassed several roadways transpired in the city of Sterling Heights.

The TOC assisted Sheriff Dispatch on June 16th when Vice President Mike Pence visited Macomb County. Control Room Technicians provided CCTV coverage of the Vice President's motorcade as it traveled through the county. Traffic engineers reduced the congestion impact on motorists by making real-time traffic signal changes to help facilitate the flow of traffic.

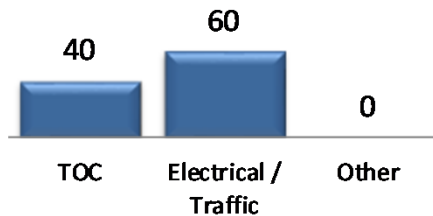
SERVICE REQUESTS

Service Request Source



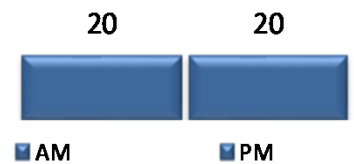
In the month of June, 100 incoming requests regarding traffic signals were received.

Service Request by Dept.

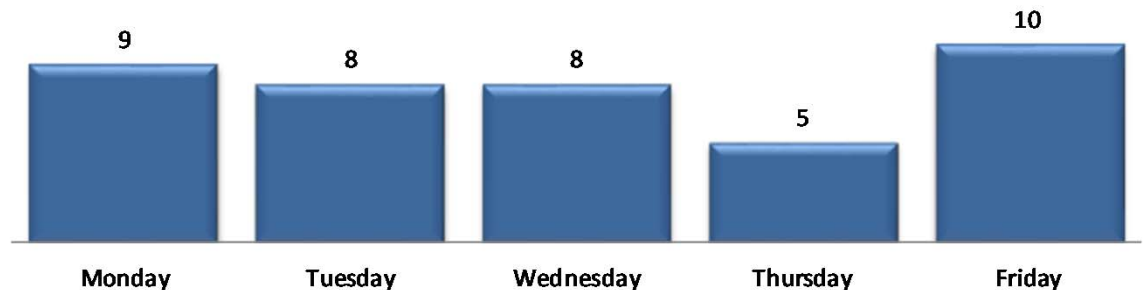


In the month of June, TOC engineers closed 33 service requests within an average of 5 business days.

TOC by Time of Day



Service Request Per Day of Week



TRAFFIC OPERATIONS

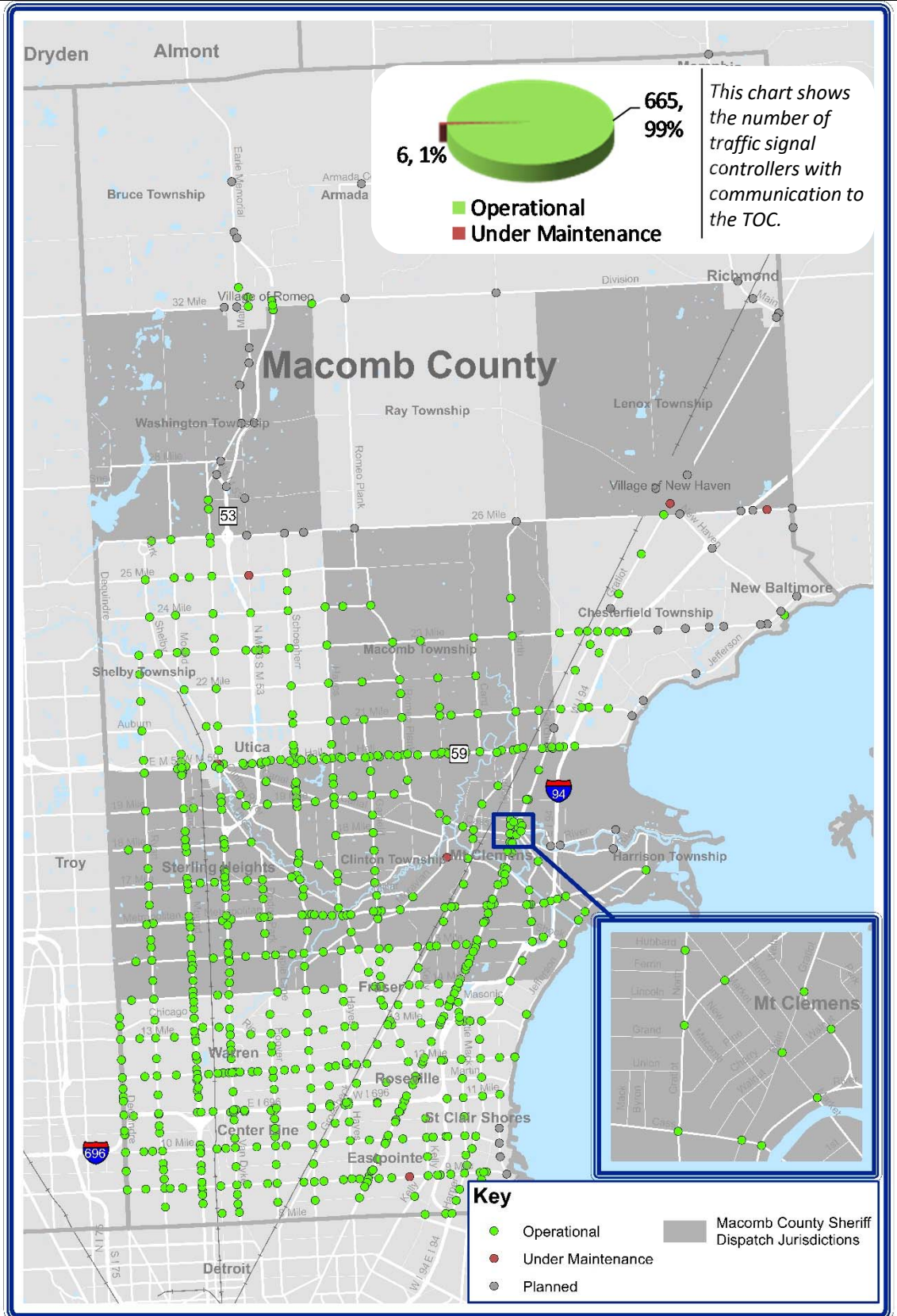
June 2020



REGIONAL COMMUNICATIONS SUMMARY

ITS MAINTENANCE

June 2020



During the target month, the TOC added 0 intersections to the operational communications network. Locations considered to have operational communications are shown in green, while locations found not to have operational communications due to needed maintenance are shown in red. Locations that are "Planned" have not yet been integrated into TOC network.



HIGH IMPACT CORRIDOR

COMMUNICATIONS AVAILABILITY

Corridor	Current Month	Previous Month	Change
9 Mile	96%	96%	0%
14 Mile	100%	87%	13%
15 Mile	100%	86%	14%
Metro Parkway	100%	89%	11%
Hall (M-59)	100%	100%	0%
Dequindre	100%	100%	0%
Ryan	100%	100%	0%
Mound	100%	100%	0%
Hoover	100%	100%	0%
Schoenherr	100%	100%	0%
Hayes	100%	100%	0%
Gratiot (M-3)	98%	98%	0%
Harper	100%	100%	0%

The table above represents a one-time monthly snapshot of communications along major corridors in Macomb County. Corridors which are considered to have operational communications (90% and above) are shown in **green**, while corridors found not to have operational communications (<90%) at the time of the snapshot are shown in **red**.

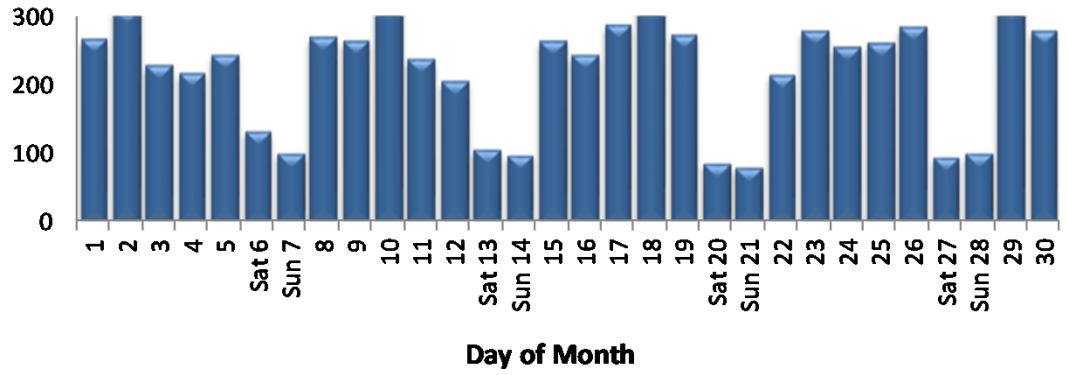
EXECUTED TRAFFIC SIGNAL UPGRADES

June	Location	Upgrade
N/A	N/A	N/A

Tracks the roadway upgrades executed in Macomb County, including those done by other transportation agencies, also lists a description of the upgrades performed.

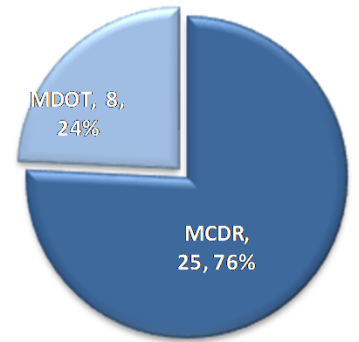
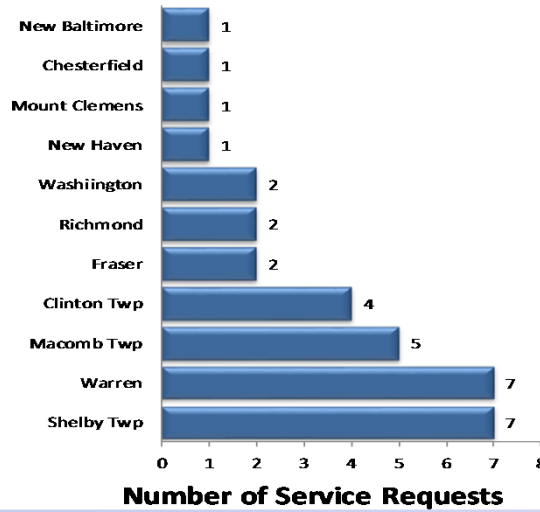


MCDR WEBSITE HITS



A total of 6,692 hits were accrued at <http://roads.macombgov.org/>.

SERVICE REQUESTS PER MUNICIPALITY

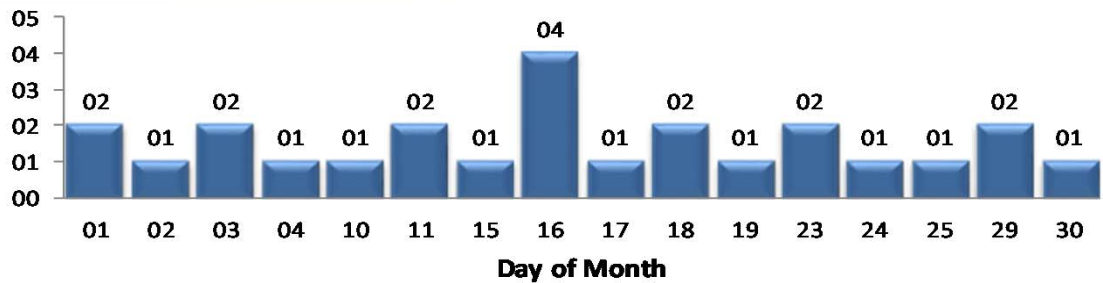


The chart to the left shows how many requests were created per traffic signal location under municipality jurisdiction. The chart to the right shows breakdown of the requests created under MDOT or MCDR / local municipality jurisdiction.

GOVDELIVERY NOTIFICATIONS

In the month of June, the TOC sent out 25 GovDelivery notifications, and increased the number of recipients from 1,970 to 2,009 receiving notifications.

Note: The chart below only shows data for the days GovDelivery notifications were sent from the TOC.



GovDelivery is a tool to notify Macomb County motorists of any incident blocking at least one lane of traffic or causing traffic issues. The notifications are sent after an incident has been verified.

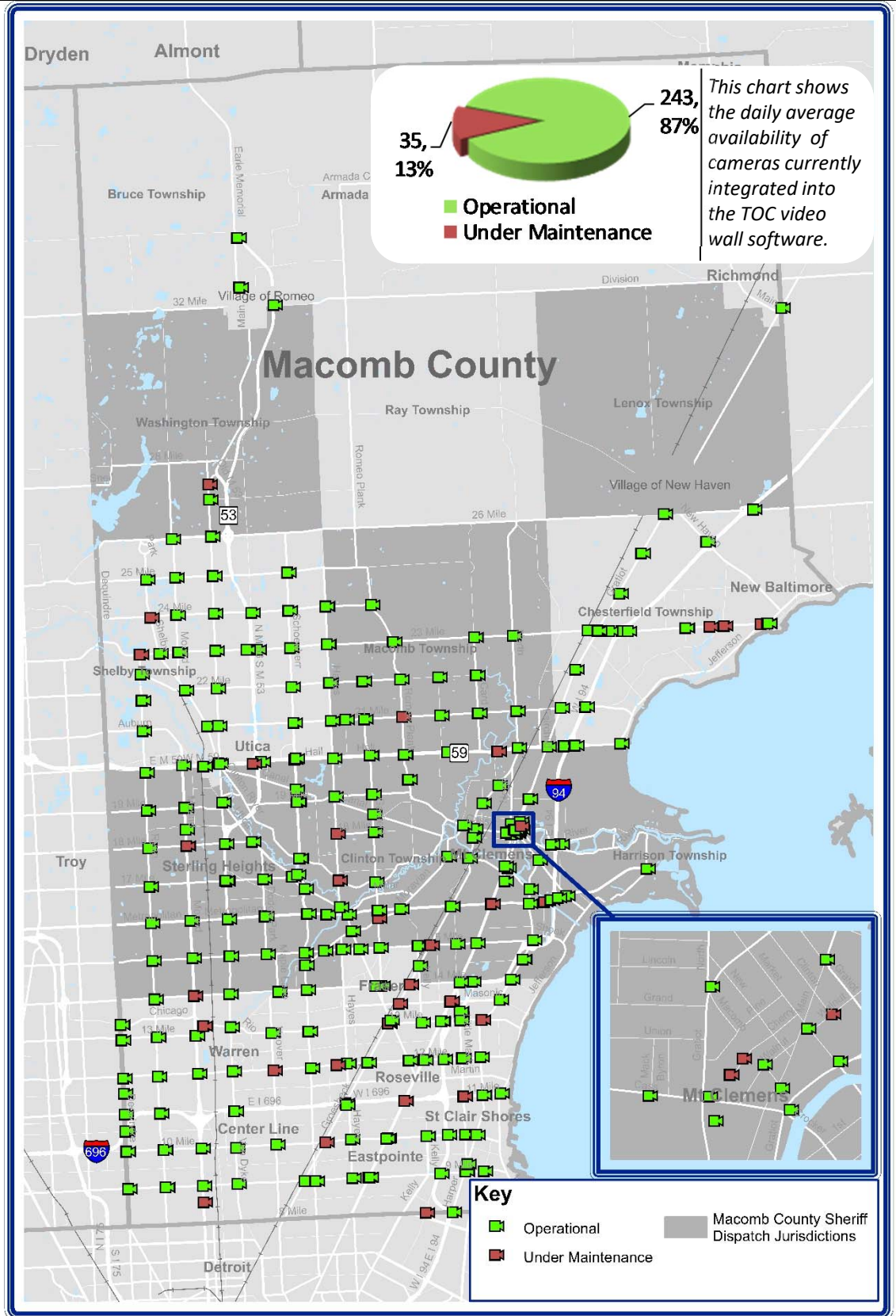
[Sign up for incident notifications on weekdays from 6 a.m. to 6 p.m. causing lane or roadway closures on major Macomb County arterials.](#)



CURRENT CAMERA LOCATIONS

CAMERA COVERAGE

June 2020



During the target month, the TOC added 0 cameras to be viewed on the video wall.

Cameras considered to have operational communications are shown in **green**, while cameras found not to have operational communications due to needed maintenance are shown in **red**.

