

# MACOMB COUNTY DEPARTMENT OF ROADS

## TRAFFIC OPERATIONS CENTER

*"To provide and maintain a reliable real-time traffic operations system, in coordination with county stakeholders, that enables a safe, efficient, and informative travel experience."*

## PERFORMANCE MEASURES



**June 2019**

**AECOM**

**WSP**

**INTEGRAL  
BLUE**



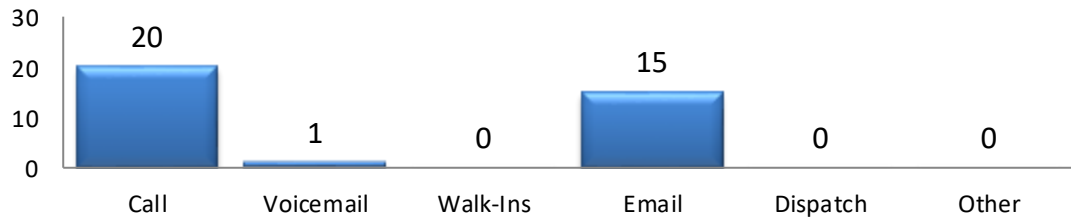
**John Abraham, PhD, PE, PTOE**  
Director of Traffic & Operations  
Macomb County Department of Roads  
117 S Groesbeck Hwy  
Mount Clemens, MI 48043  
586-463-8671  
[JAbraham@RCMCWeb.org](mailto:JAbraham@RCMCWeb.org)

# INFORMATIVE TOC HIGHLIGHT

During the month of June, the Macomb County Department of Roads (MCDR) Traffic Operations Center (TOC) engineers and control room technicians assisted with the fireworks celebrations of Stoney Creek Metropark, and the city of Mt. Clemens. The staff reduced traffic congestion and created a safer environment by altering the traffic signal timings to account for the influx of people. Staff also assisted by monitoring the events and working with Macomb County Sheriff Dispatch. The goal was to provide a safer and better experience so the public could focus on the fun at hand.

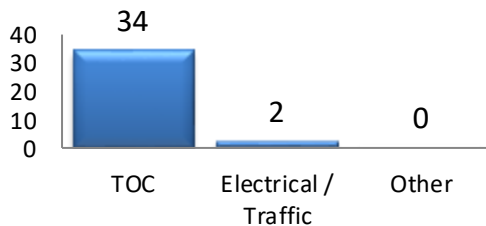
## SERVICE REQUESTS

### Service Request Source



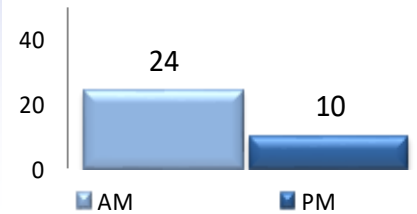
*In the month of June, 36 incoming requests regarding traffic signals were received. The 'Source' chart shows how the service request was received by the TOC.*

### Service Request by Dept.

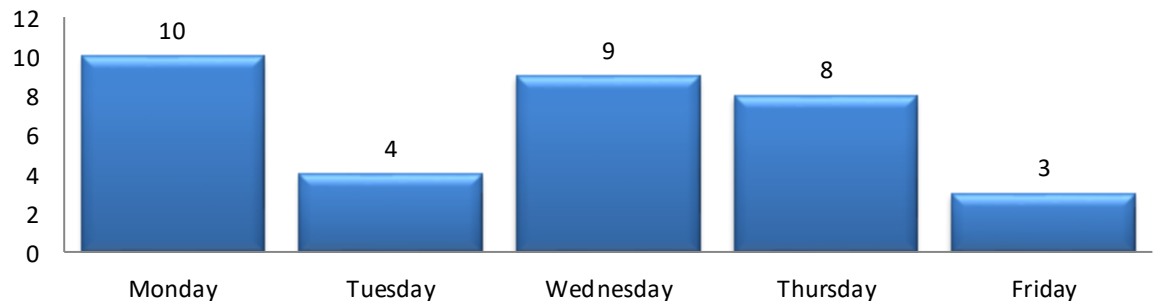


*In the month of June, the TOC engineers closed 34 service requests within an average of 6 business days.*

### TOC by Time of Day



### Service Request Per Day of Week



TRAFFIC OPERATIONS

June 2019

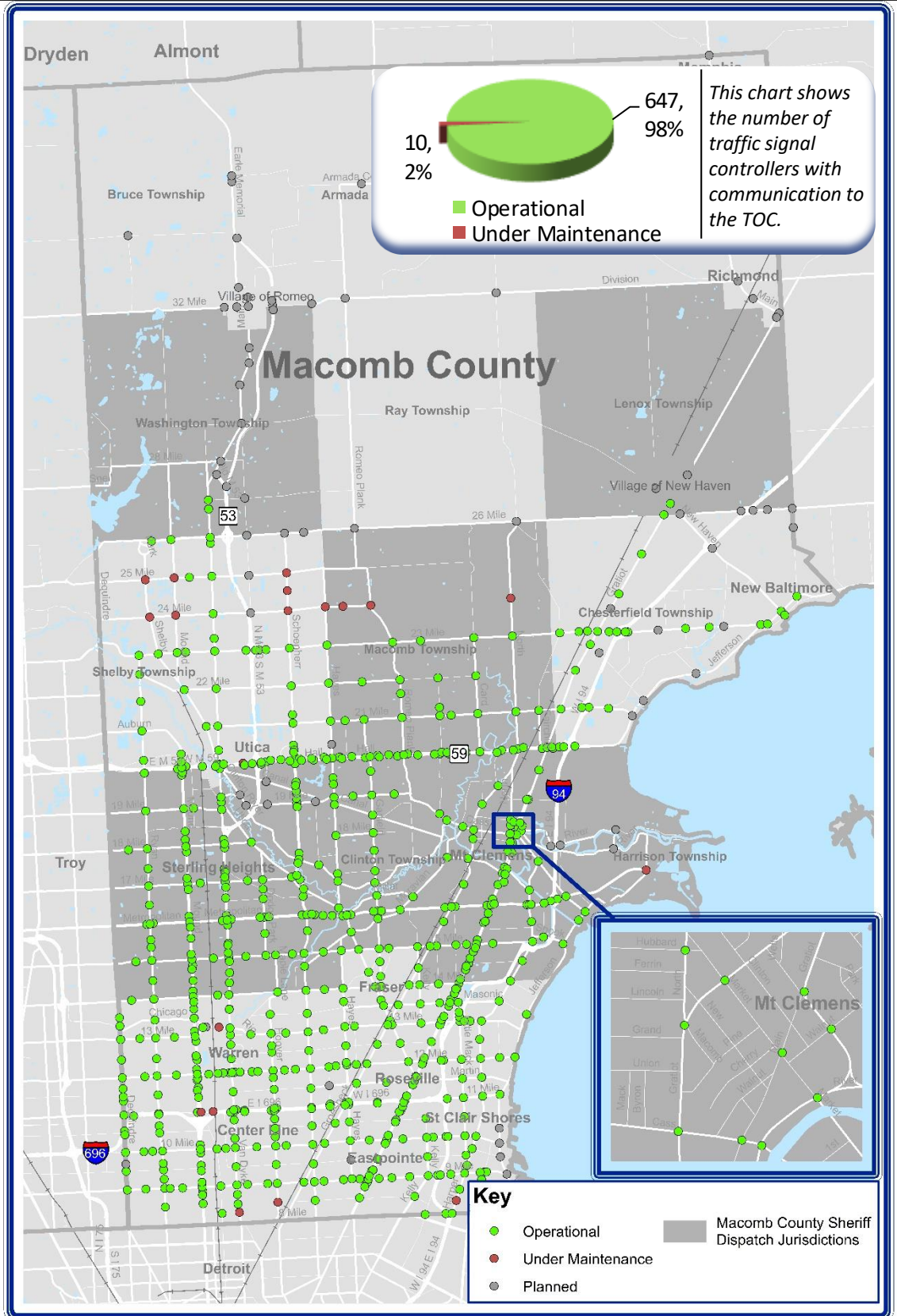


**AECOM**

# REGIONAL COMMUNICATIONS SUMMARY

## ITS MAINTENANCE

June 2019



**During the target month, the TOC added 0 intersections to our operational communications network.**

Locations considered to have operational communications are shown in **green**, while locations found not to have operational communications due to needed maintenance at the time of the snapshot are shown in **red**. Locations that are "Planned" have not yet been integrated into TOC network.



# COUNTY CORRIDOR COMMUNICATIONS

## AVAILABILITY

| Corridor      | Current Month | Previous Month | Change |
|---------------|---------------|----------------|--------|
| 9 Mile        | 100%          | 100%           | 0%     |
| 14 Mile       | 100%          | 100%           | 0%     |
| 15 Mile       | 95%           | 100%           | -5%    |
| Metro Parkway | 97%           | 97%            | 0%     |
| Hall (M-59)   | 100%          | 98%            | 2%     |
| Dequindre     | 100%          | 100%           | 0%     |
| Ryan          | 100%          | 100%           | 0%     |
| Mound         | 100%          | 98%            | 2%     |
| Hoover        | 93%           | 93%            | 0%     |
| Schoenherr    | 92%           | 92%            | 0%     |
| Hayes         | 96%           | 96%            | 0%     |
| Gratiot (M-3) | 100%          | 100%           | 0%     |
| Harper        | 100%          | 95%            | 5%     |

The table above represents a one-time monthly snapshot of communications along major corridors in Macomb County. Corridors which are considered to have operational communications (90% and above) are shown in **green**, while corridors found not to have operational communications (<90%) at the time of the snapshot are shown in **red**.

## EXECUTED TRAFFIC SIGNAL UPGRADES

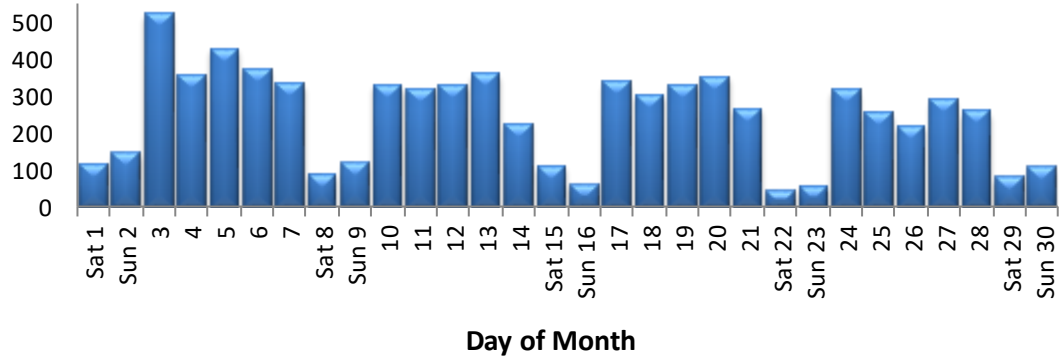
| June | Location | Upgrade |
|------|----------|---------|
| N/A  | N/A      | N/A     |
|      |          |         |

Tracks the roadway upgrades executed in Macomb County, including those done by other transportation agencies, also lists a description of the upgrades performed.



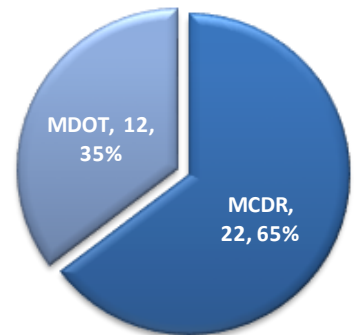
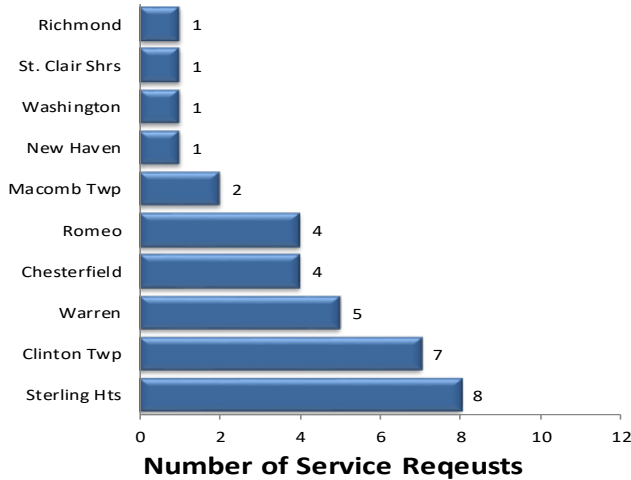


## MCDR WEBSITE HITS



A total of 7,450 hits were accrued at <http://roads.macombgov.org/>.

## SERVICE REQUESTS PER MUNICIPALITY

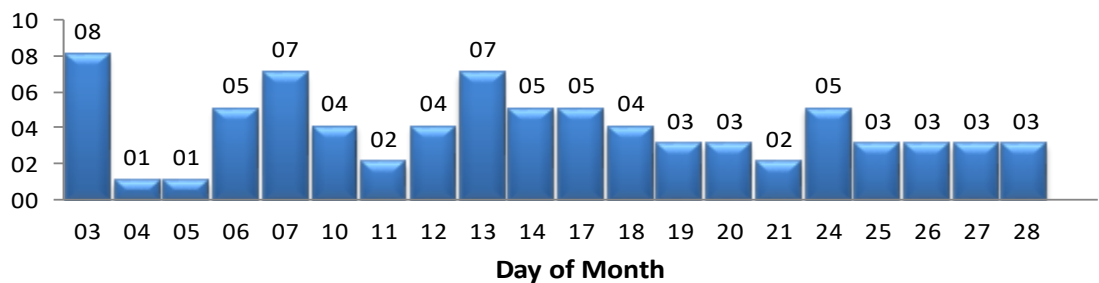


The chart to the left shows how many requests were created per traffic signal location under municipality jurisdiction and the chart to the right shows breakdown of the requests created under MDOT or MCDR / local municipality jurisdiction.

## GOVDELIVERY NOTIFICATIONS

In the month of June, the TOC sent out 78 GovDelivery notifications, and increased the number of recipients from 1,438 to 1,503 receiving notifications.

Note: The chart below only shows data for the days GovDelivery notifications were sent from the TOC.



GovDelivery is a tool to notify Macomb County motorists of any incident blocking at least one lane of traffic, or causing traffic issues. The notifications are only sent after the incident has been verified.

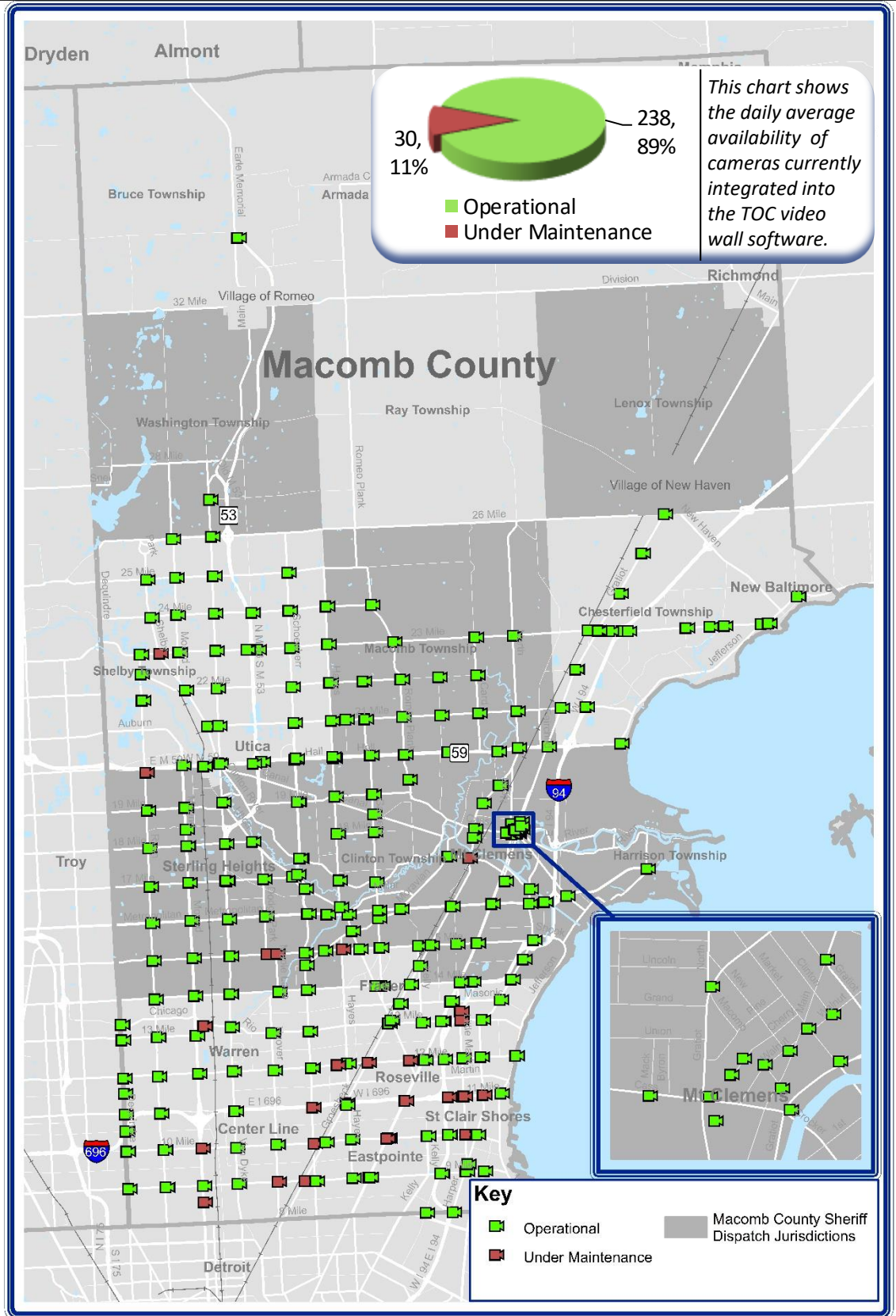
[Sign up for incident notifications on weekdays from 6 a.m. to 6 p.m. causing lane or roadway closures on major Macomb County arterials.](#)



# CURRENT CAMERA LOCATIONS

## CAMERA COVERAGE

June 2019



This chart shows the daily average availability of cameras currently integrated into the TOC video wall software.

During the target month, the TOC added 1 cameras to be viewed on the video wall.

Cameras considered to have operational communications are shown in green, while cameras found not to have operational communications due to needed maintenance at the time of the snapshot are shown in red. Cameras that are "Planned" have not yet been integrated into TOC video wall software.

