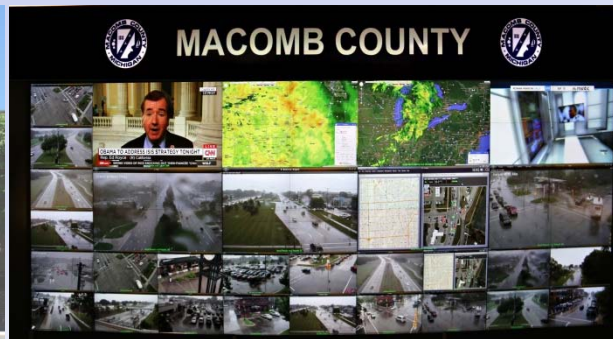


MACOMB COUNTY DEPARTMENT OF ROADS

TRAFFIC OPERATIONS CENTER

"To provide and maintain a reliable real-time traffic operations system, in coordination with county stakeholders, that enables a safe, efficient, and informative travel experience."

PERFORMANCE MEASURES



June 2018



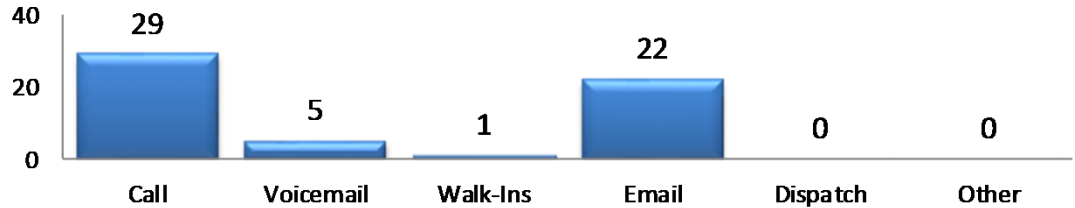
John Abraham, PhD, PE, PTOE
Director of Traffic & Operations
Macomb County Department of Roads
117 S Groesbeck Hwy
Mount Clemens, MI 48043
586-463-8671
JAbraham@RCMCWeb.org

INFORMATIVE TOC HIGHLIGHT

In the month of June, the Communications & Technology Center (COMTEC) participated in ITS America. Macomb County, in collaboration with MDOT and Smart bus, demonstrated Transit Priority using dedicated short range communications (DSRC) connected vehicle technology. The demonstration took place on Groesbeck Highway from Masonic Boulevard to Metropolitan Parkway. The MCDR TOC staff programmed the controllers, and worked closely with the MCDR Traffic staff and the consultants who programmed the Road Side Units.

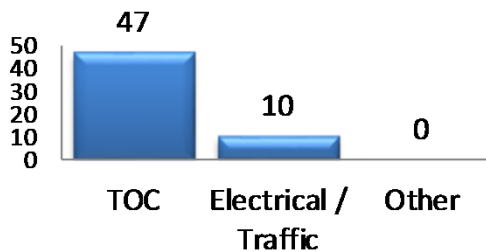
SERVICE REQUESTS

Source



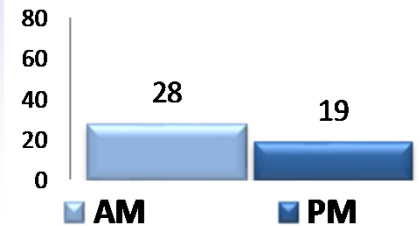
In the month of June, 57 incoming requests regarding traffic signals were received. The 'Source' chart shows how the service request was received by the TOC.

Service Request by Dept.

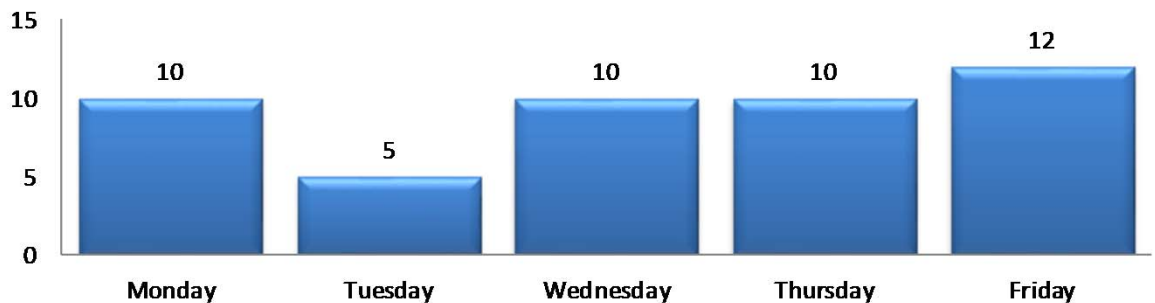


In the month of June, the TOC engineers closed 127 service requests within an average of 20 business days.

TOC AM/PM Requests



Service Request Per Day of Week



TRAFFIC OPERATIONS

June 2018

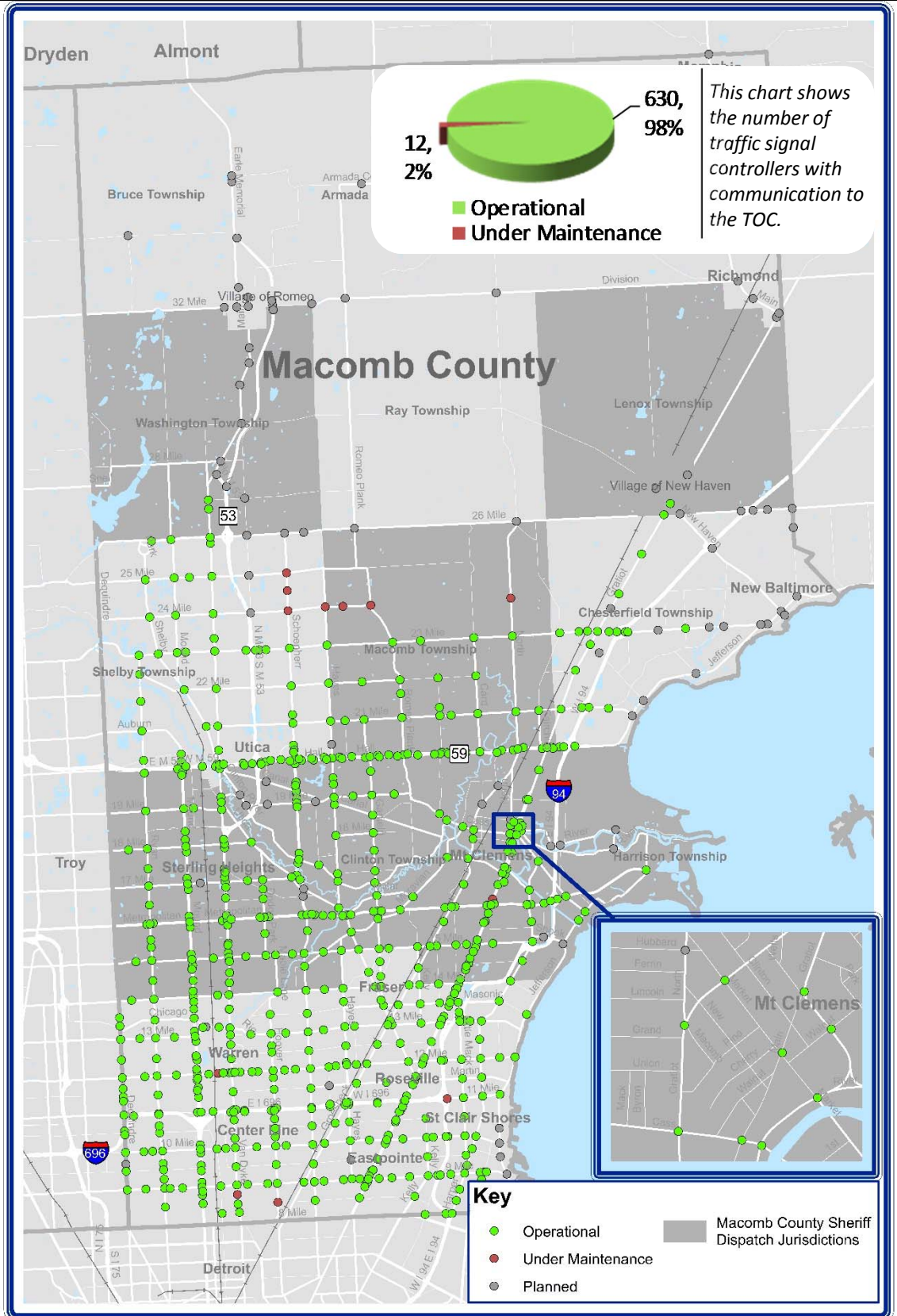


AECOM

REGIONAL COMMUNICATIONS SUMMARY

ITS MAINTENANCE

June 2018



During the target month, the TOC added 0 intersections to our operational communications network.

Locations considered to have operational communications are shown in **green**, while locations found not to have operational communications due to needed maintenance at the time of the snapshot are shown in **red**. Locations that are "Planned" have not yet been integrated into TOC network.



COUNTY CORRIDOR COMMUNICATIONS AVAILABILITY

Corridor	Current Month	Previous Month	Change
9 Mile	100%	100%	0%
14 Mile	100%	100%	0%
15 Mile	100%	100%	0%
Metro Parkway	100%	100%	0%
Hall (M-59)	100%	100%	0%
Ryan	100%	100%	0%
Mound	100%	100%	0%
Hoover	93%	100%	-7%
Schoenherr	92%	92%	0%
Hayes	96%	96%	0%
Gratiot (M-3)	98%	98%	0%
Harper	100%	100%	0%

The table above represents a one-time monthly snapshot of communications along major corridors in Macomb County. Corridors which are considered to have operational communications (90% and above) are shown in green, while corridors found not to have operational communications (<90%) at the time of the snapshot are shown in red.

EXECUTED TRAFFIC SIGNAL UPGRADES

June	Location	Upgrade
N/A	N/A	N/A

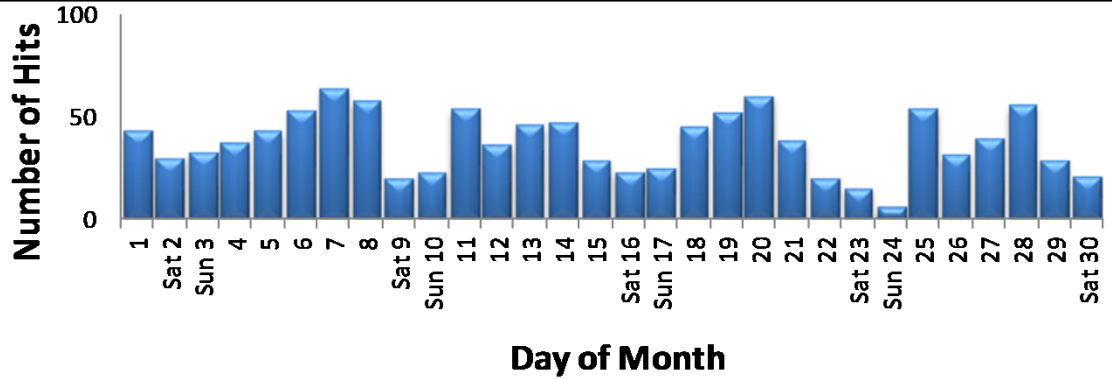
Tracks the roadway upgrades executed in Macomb County, including those done by other transportation agencies, also lists a description of the upgrades performed.

SIGNAL INFORMATION

June 2018

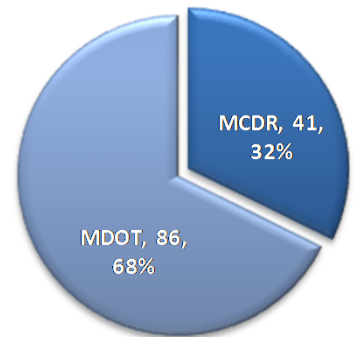
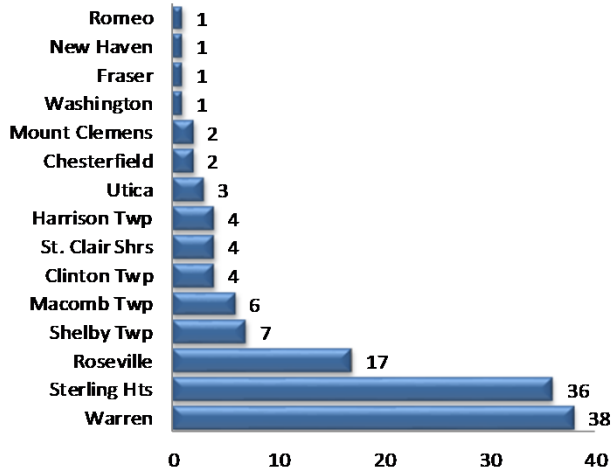


MCDR WEBSITE HITS



A total of 1,131 hits were accrued at <http://roads.macombgov.org/>.

SERVICE REQUESTS PER MUNICIPALITY

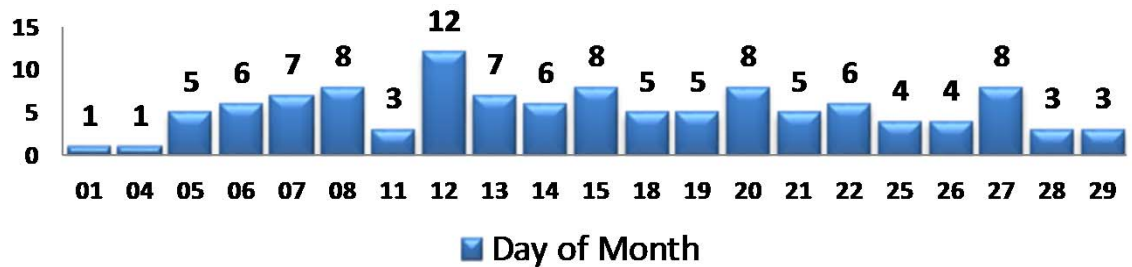


The chart to the left shows how many requests were created per traffic signal location under municipality jurisdiction and the chart to the right shows breakdown of the requests created under MDOT or MCDR / local municipality jurisdiction.

GOVDELIVERY NOTIFICATIONS

In the month of June, the TOC sent out 115 GovDelivery notifications, and increased the number of recipients from 1,137 to 1,148 receiving notifications.

Note: The chart below only shows data for the days GovDelivery notifications were sent from the TOC.



GovDelivery is a tool to notify Macomb County motorists of any incident blocking at least one lane of traffic, or causing traffic issues. The notifications are only sent after the incident has been verified.

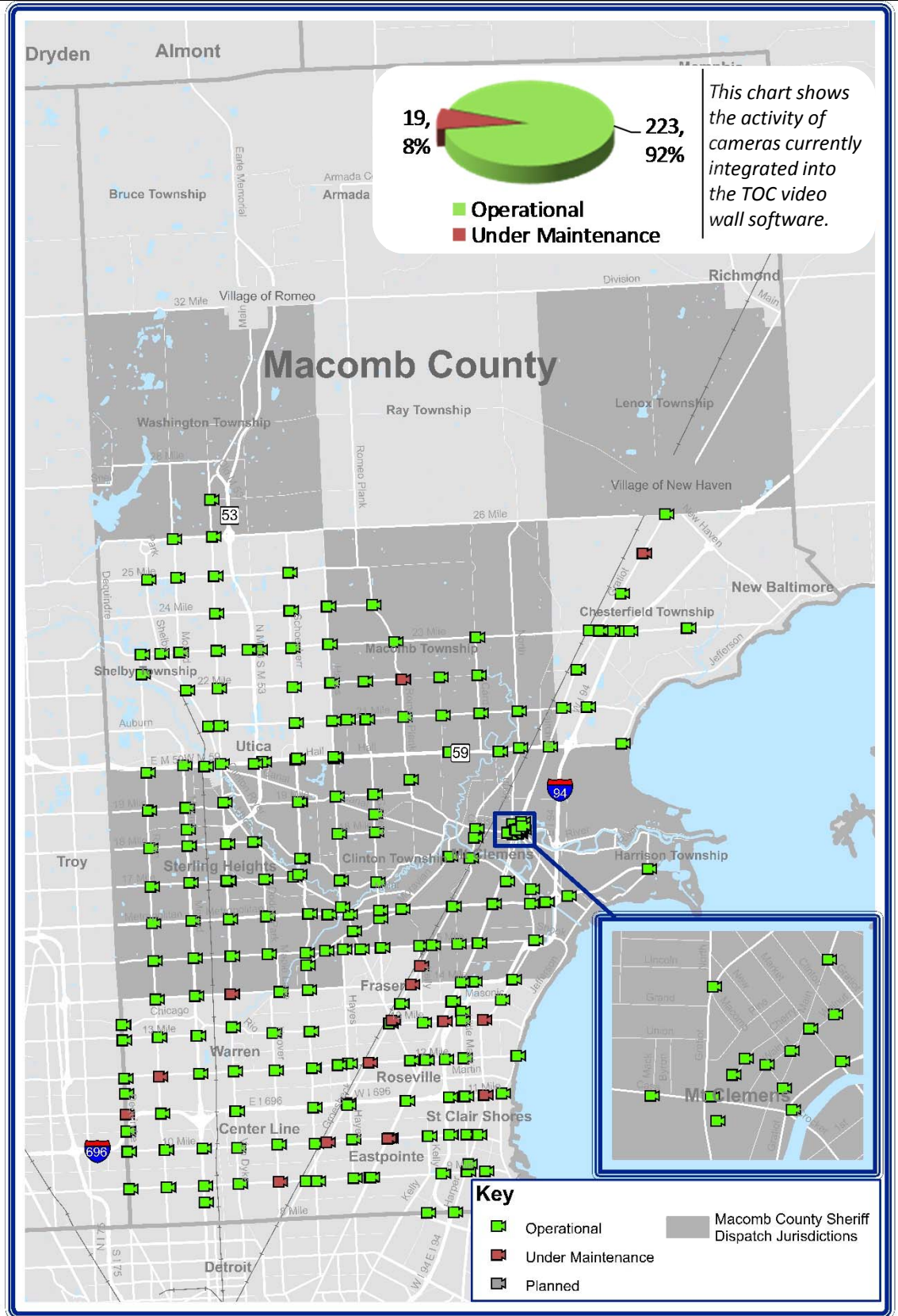
[Sign up for incident notifications on weekdays from 6 a.m. to 6 p.m. causing lane or roadway closures on major Macomb County arterials.](#)



CURRENT CAMERA LOCATIONS

CAMERA COVERAGE

June 2018



During the target month, the TOC added 1 cameras to be viewed on the video wall.

Cameras considered to have operational communications are shown in green, while cameras found not to have operational communications due to needed maintenance at the time of the snapshot are shown in red. Cameras that are "Planned" have not yet been integrated into TOC video wall software.

