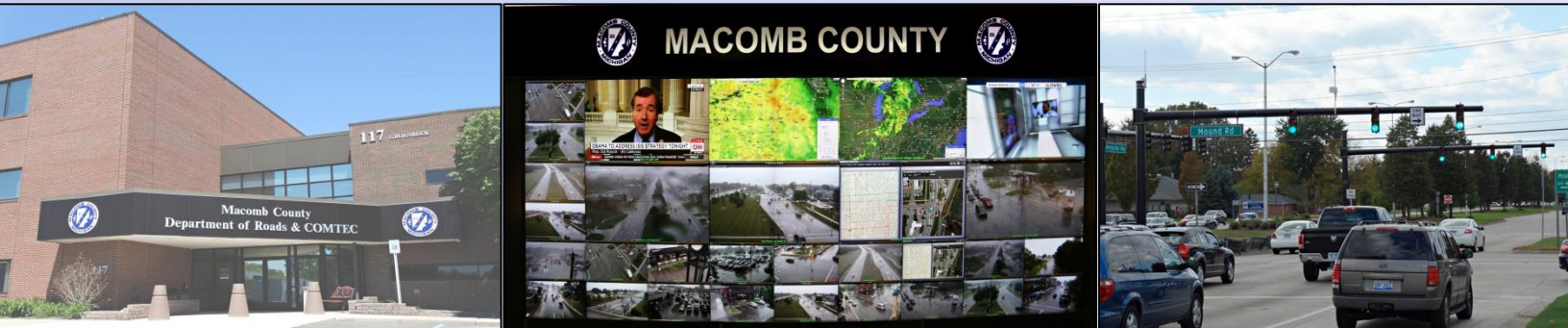


# MACOMB COUNTY DEPARTMENT OF ROADS

## TRAFFIC OPERATIONS CENTER

*"To provide and maintain a reliable real-time traffic operations system, in coordination with county stakeholders, that enables a safe, efficient, and informative travel experience."  
- MCDR TOC Mission Statement*

## PERFORMANCE MEASURES



July 2022

AECOM

WSP

INTEGRAL  
BLUE



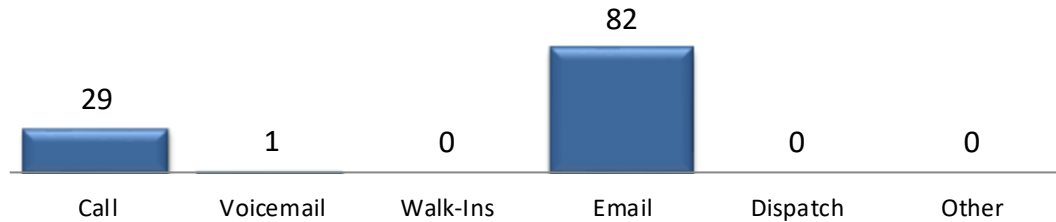
**John Abraham, PhD, PE, PTOE**  
Director of Traffic & Operations  
Macomb County Department of Roads  
117 S Groesbeck Hwy  
Mount Clemens, MI 48043  
586-463-8671  
[JAbraham@RCMCWeb.org](mailto:JAbraham@RCMCWeb.org)

# MONTHLY TOC HIGHLIGHT

In the month of July, IT/ITS maintenance staff worked extensively with new asset management and work order features to enhance response times to data communication issues. From July 21st and 22nd, the preventive maintenance team launched climb crews to improve key communication poles throughout the County. These recent maintenance processes have increased the throughput capabilities for COMTEC to better serve all Macomb County roadway users. With obsolescence identification and strategic updates, the Macomb CCTV network was able to maintain a 96% uptime for the month of July.

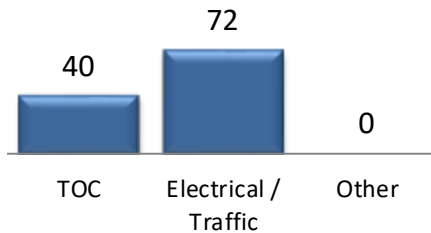
## OPENED SERVICE REQUESTS

Service Request Source



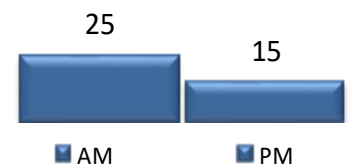
In the month of July, **112** incoming requests regarding traffic signals were received.

Service Request by Dept.

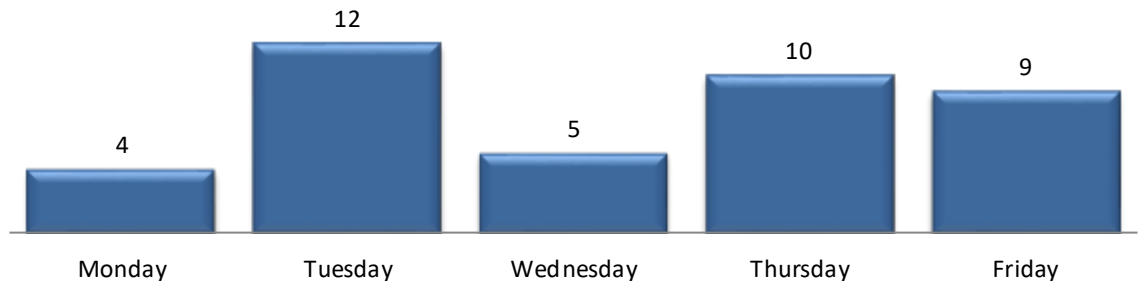


In the month of July, TOC engineers closed **50** service requests within an average of **6** business days.

Service Requests Opened by Time of Day



Service Request Opened Per Day of Week



TRAFFIC OPERATIONS

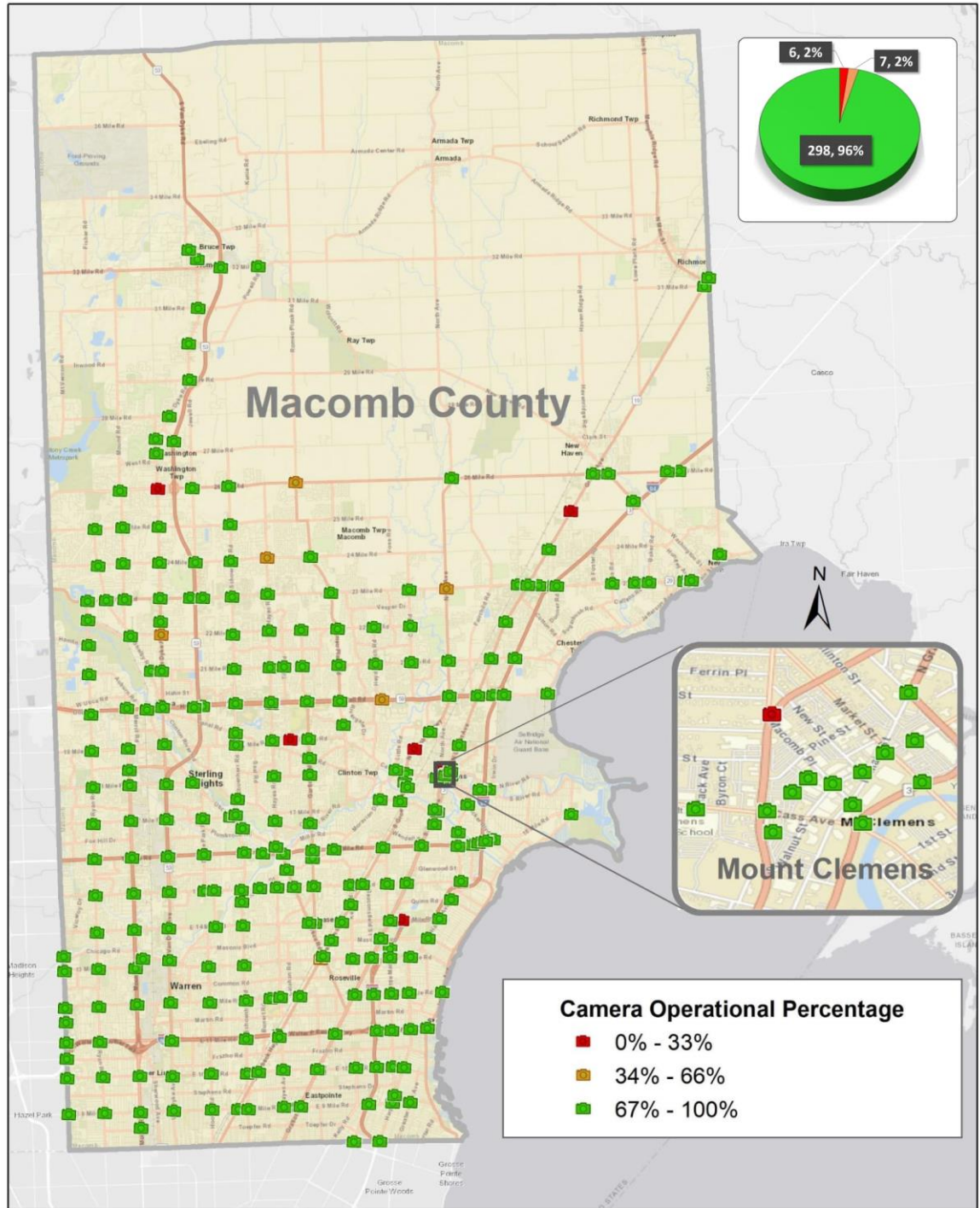
July 2022



# CCTV TRAFFIC CAMERA SUMMARY

## CAMERA COVERAGE

July 2022



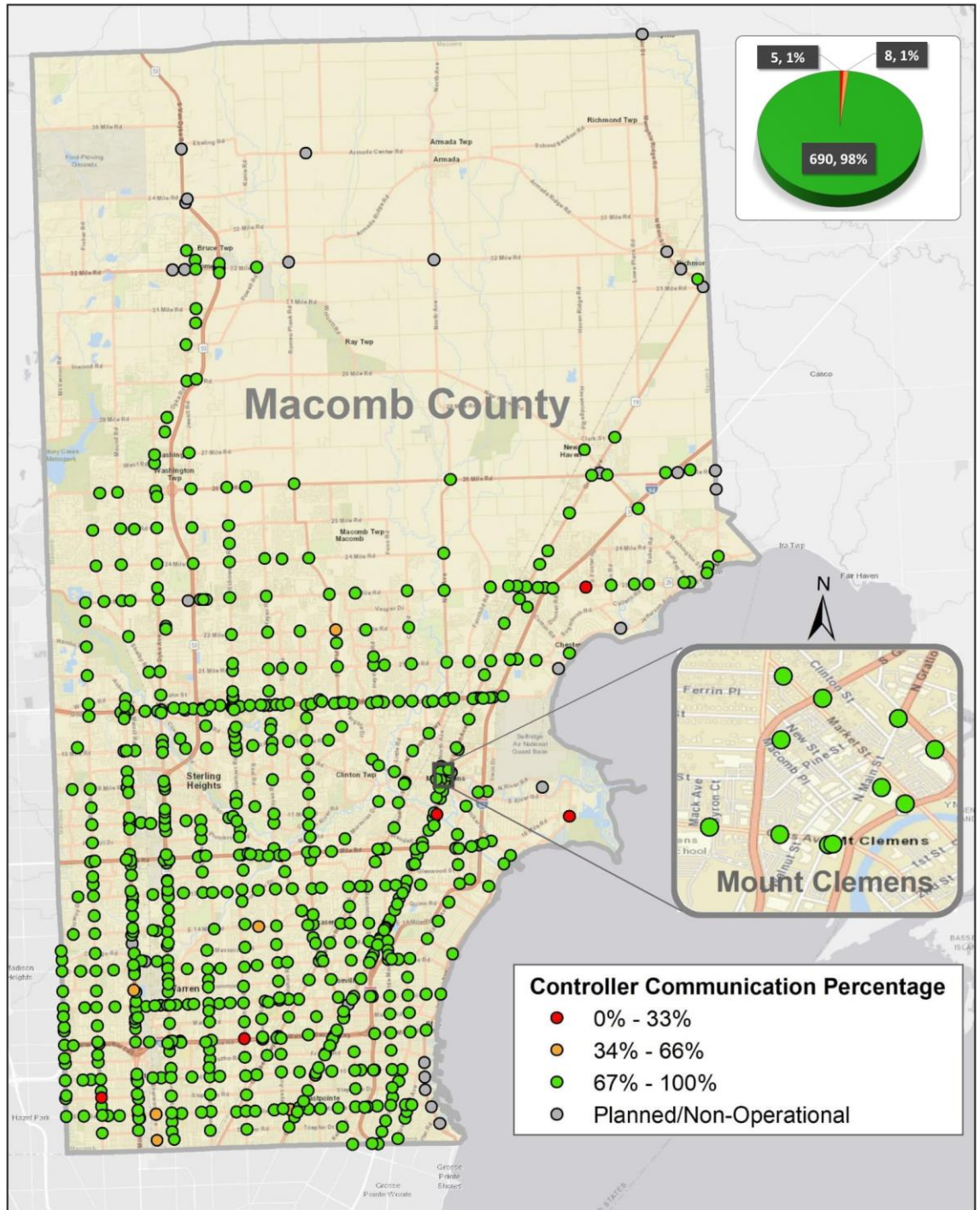
The map above represents the CCTV camera operational percentages for the month of July 2022.



# REGIONAL COMMUNICATIONS SUMMARY

## ITS MAINTENANCE

July 2022



The map above represents the communication availability percentages of Traffic Signal Controllers for the month of July 2022.



# HIGH IMPACT CORRIDOR COMMUNICATIONS AVAILABILITY

Corridor	Current Month	Previous Month	Change
9 Mile	95%	96%	-1%
14 Mile	99%	97%	2%
15 Mile	99%	99%	0%
Metro Parkway	100%	99%	1%
Hall Rd(M-59)	99%	98%	1%
Dequindre	97%	89%	8%
Ryan	95%	96%	-1%
Mound	99%	99%	0%
Hoover	96%	98%	-2%
Schoenherr	97%	98%	-1%
Hayes	99%	98%	1%
Gratiot(M-3)	99%	99%	0%
Harper	99%	99%	0%

*The table above represents a one-time monthly snapshot of communications along major corridors in Macomb County.*

## FIELD WORK

*79 sites visited by the IT/ITS Maintenance Technicians. 11 sites visited by the combined efforts of the IT/ITS Maintenance and MCDR Electrical crews.*

## SIGNAL TIMING CHANGES

*Traffic signal changes performed by TOC engineers*

Time of Signal change	Location	Intersection	Reason for signal change
07/01/2022 15:49	18 Mile Road/Hayes	625	Service Request
07/01/2022 16:23	Garfield/Metropolitan Parkway	157	Incident
07/01/2022 16:23	Metropolitan Parkway EB/Crossover 535' W of Garfield	642	Incident
07/01/2022 16:33	Hayes/Utica Road	504	Congestion
07/08/2022 8:58	Van Dyke SB (M-53)/Crossover 620' N of 15 Mile Road	667	Incident
07/08/2022 8:59	Gratiot NB (M-3)/Crossover 850' S of 14 Mile Road	532	Construction
07/08/2022 8:59	Groesbeck (M-97)/Hall Road (M-59)	193	Construction
07/08/2022 8:59	Hall Road EB (M-59)/Crossover West of Groesbeck	808	Construction
07/08/2022 8:59	Hall Road WB (M-59)/Crossover East of Groesbeck	809	Construction
07/08/2022 8:59	Gratiot (M-19)/31 Mile Road	182	Incident



# SIGNAL TIMING CHANGES CONTINUED

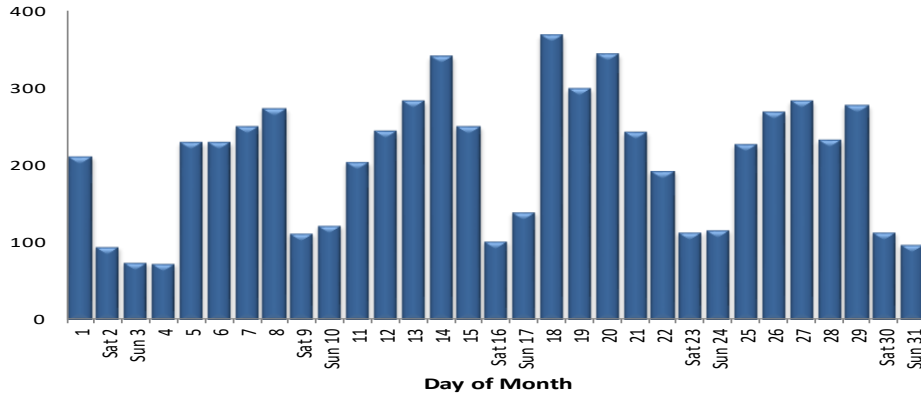
**MAINTENANCE**

July 2022

Time of Signal change	Location	Intersection	Reason for signal change
07/08/2022 8:59	17 Mile Road/Van Dyke	221	Construction
07/08/2022 8:59	14 Mile Road/Gratiot	142	Construction
07/08/2022 14:09	Groesbeck (M-97)/Martin	196	Congestion
07/08/2022 17:04	14 Mile Road/Groesbeck (M-97)	143	Congestion
07/11/2022 10:45	Dequindre/12 Mile Road	106	Construction
07/12/2022 14:36	Harper/Metropolitan Parkway	218	Service Request
07/12/2022 14:48	Metropolitan Parkway WB/Crossover 295' E of Harper	650	Service Request
07/12/2022 14:48	Metropolitan Parkway EB/Crossover 300' W of Harper	649	Service Request
07/13/2022 8:10	Donner/M-29 (23 Mile Road)	999	Construction
07/13/2022 8:10	I-94 EB Off Ramp/M-19/New Haven	886	Congestion
07/13/2022 11:23	Gratiot (M-3)/Hall Road (M-59)	162	Construction
07/13/2022 11:23	Hall Road EB (M-59)/Crossover West of Gratiot	810	Construction
07/13/2022 11:23	Hall Road WB (M-59)/Crossover East of Gratiot	811	Construction
07/13/2022 17:12	Donner/I-94 EB Off Ramp/23 Mile Road	662	Construction
07/18/2022 17:58	Metropolitan Parkway/Ryan	299	Incident
07/18/2022 17:58	15 Mile Road/Ryan	137	Incident
07/18/2022 17:58	17 Mile Road/Van Dyke	221	Incident
07/18/2022 17:58	Van Dyke NB (M-53)/Crossover 700' S of 17 Mile Road	675	Incident
07/18/2022 17:58	Van Dyke SB (M-53)/Crossover 650' N of 17 Mile Road	676	Incident
07/21/2022 14:29	Chicago Road/Van Dyke	80	Service Request
07/22/2022 18:03	Metropolitan Parkway/Moravian	267	Incident
07/25/2022 15:56	Dobry/Ryan	846	Congestion
07/25/2022 16:29	Moravian/Schoenherr	38	Incident
07/25/2022 16:36	15 Mile Road/Moravian	136	Congestion
07/25/2022 17:54	Hall Road EB (M-59)/Crossover W. of Marketplace	891	Construction
07/26/2022 9:26	Gratiot NB (M-3)/I-94 EB Ramp	215	Construction
07/26/2022 17:13	18 Mile Road/Utica Road	507	Special Event
07/27/2022 17:29	Masonic/Schoenherr	368	Construction
07/28/2022 12:50	I-94 EB Off Ramp/21 Mile Road	333	Congestion
07/28/2022 16:11	Schoenherr SB/17 Mile Road	841	Incident
07/29/2022 16:36	Hayes/Shoreline	626	Incident
07/29/2022 16:37	Hayes/Lakeside Village Apartments	849	Incident

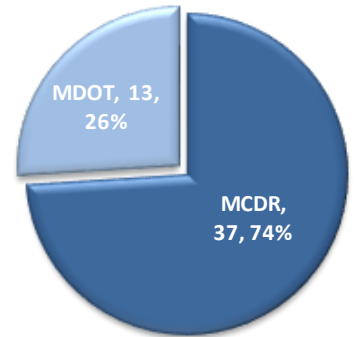
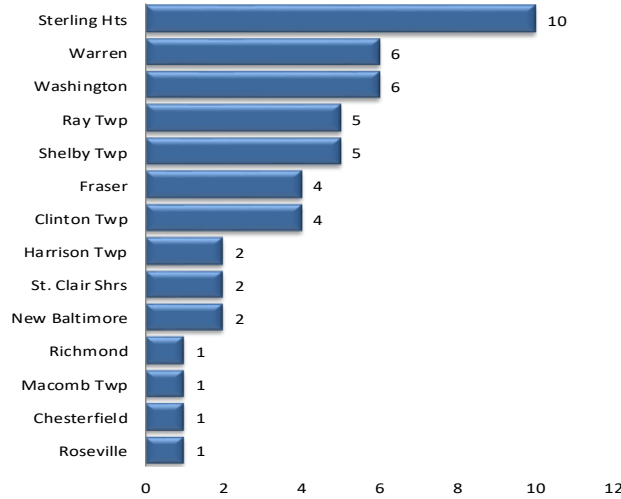


# MCDR WEBSITE HITS



A total of **7,778** hits were accrued at <http://roads.macombgov.org/>.

## CLOSED SERVICE REQUESTS PER MUNICIPALITY

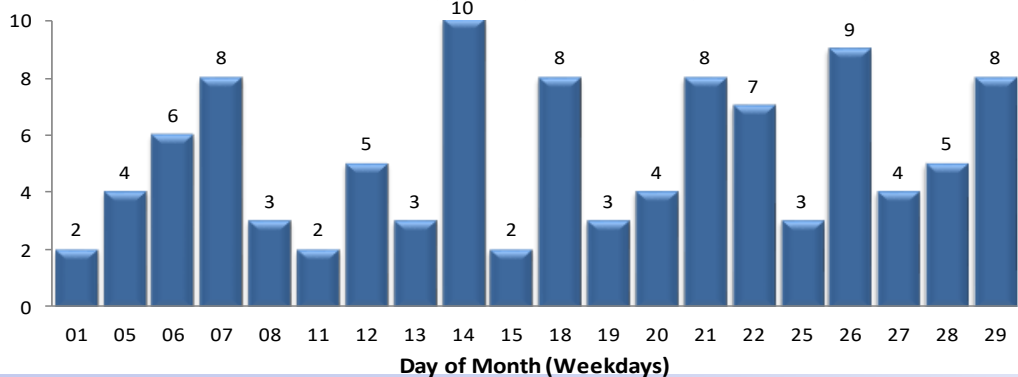


The chart to the left shows how many requests were closed per traffic signal location under municipality jurisdiction. The chart to the right shows breakdown of the requests closed under MDOT or MCDR / local municipality jurisdiction.

## GOVDELIVERY NOTIFICATIONS

In the month of July, the TOC sent out **104** GovDelivery notifications. The number of recipients receiving GovDelivery notifications increased from **3,461** to **3,525** this month.

Note: The chart below only shows data for the days GovDelivery notifications were sent from the TOC.



GovDelivery is a tool to notify Macomb County motorists of any incident blocking at least one lane of traffic or causing traffic issues. The notifications are sent after an incident has been verified.

 [Sign up for incident notifications on weekdays from 6 a.m. to 6 p.m. causing lane or roadway closures on major Macomb County arterials.](#)

MOTORIST EXPERIENCE

July 2022

