

MACOMB COUNTY DEPARTMENT OF ROADS

TRAFFIC OPERATIONS CENTER

*"To provide and maintain a reliable real-time traffic operations system, in coordination with county stakeholders, that enables a safe, efficient, and informative travel experience."
- MCDR-TOC Mission Statement*

PERFORMANCE MEASURES



January 2020

AECOM

wsp

**INTEGRAL
BLUE**



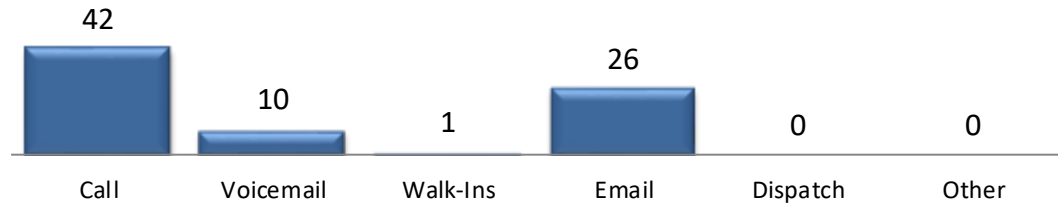
John Abraham, PhD, PE, PTOE
Director of Traffic & Operations
Macomb County Department of Roads
117 S Groesbeck Hwy
Mount Clemens, MI 48043
586-463-8671
JAbraham@RCMCWeb.org

MONTHLY TOC HIGHLIGHT

On Thursday, January 30th, the Macomb County Department of Roads (MCDR) Traffic Operations Center (TOC) provided extra camera coverage as President Donald J. Trump visited the DANA axel plant in Warren, Michigan. TOC operators were able to coordinate with the Southeast Michigan Traffic Operation Center (SEMTOC) operators to share live video feeds so that TOC operators could actively display the presidential motorcade for the Macomb County Sheriff's Department.

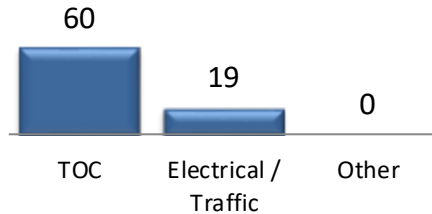
SERVICE REQUESTS

Service Request Source



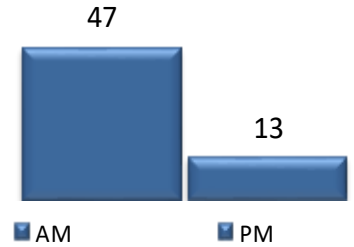
In the month of January, 79 incoming requests regarding traffic signals were received.

Service Request by Dept.

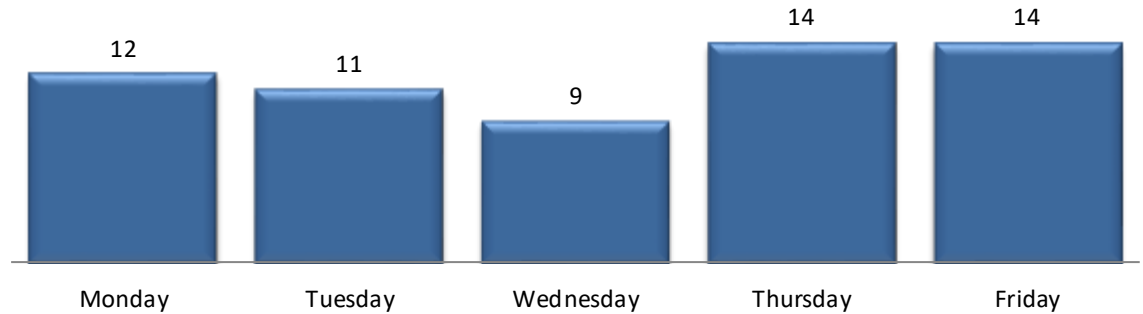


In the month of January, the TOC engineers closed 50 service requests within an average of 4 business days.

TOC by Time of Day



Service Request Per Day of Week



TRAFFIC OPERATIONS

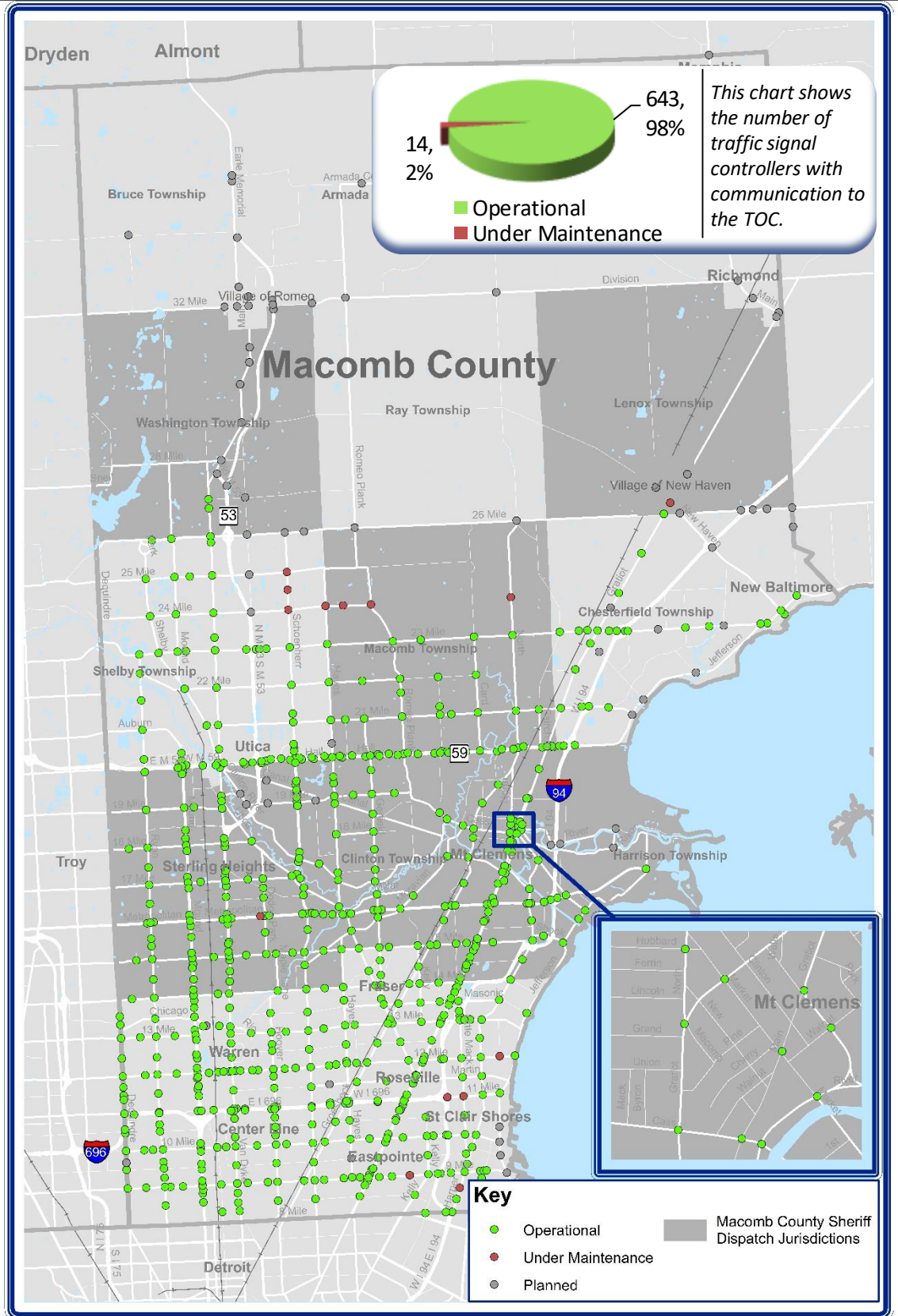
January 2020



REGIONAL COMMUNICATIONS SUMMARY

ITS MAINTENANCE

January 2020



During the target month, the TOC added 0 intersections to the operational communications network.

Locations considered to have operational communications are shown in green, while locations found not to have operational communications due to needed maintenance are shown in red. Locations that are "Planned" have not yet been integrated into TOC network.



HIGH IMPACT CORRIDOR

COMMUNICATIONS AVAILABILITY

Corridor	Current Month	Previous Month	Change
9 Mile	96%	96%	0%
14 Mile	100%	100%	0%
15 Mile	100%	95%	5%
Metro Parkway	97%	97%	0%
Hall (M-59)	100%	100%	0%
Dequindre	100%	100%	0%
Ryan	100%	100%	0%
Mound	100%	98%	2%
Hoover	100%	100%	0%
Schoenherr	92%	92%	0%
Hayes	96%	96%	0%
Gratiot (M-3)	98%	92%	6%
Harper	95%	95%	0%

The table above represents a one-time monthly snapshot of communications along major corridors in Macomb County. Corridors which are considered to have operational communications (90% and above) are shown in **green**, while corridors found not to have operational communications (<90%) at the time of the snapshot are shown in **red**.

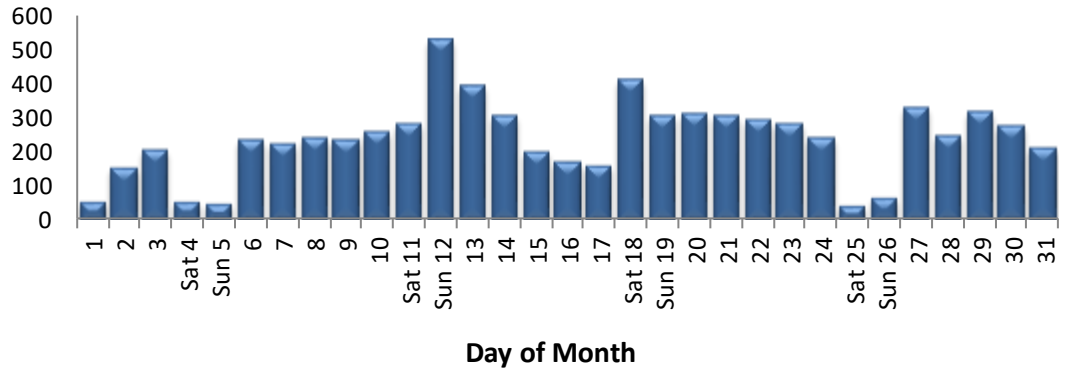
EXECUTED TRAFFIC SIGNAL UPGRADES

January	Location	Upgrade
24	0010	Cut Over

Tracks the roadway upgrades executed in Macomb County, including those done by other transportation agencies, also lists a description of the upgrades performed.

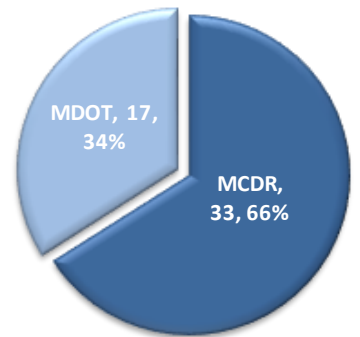
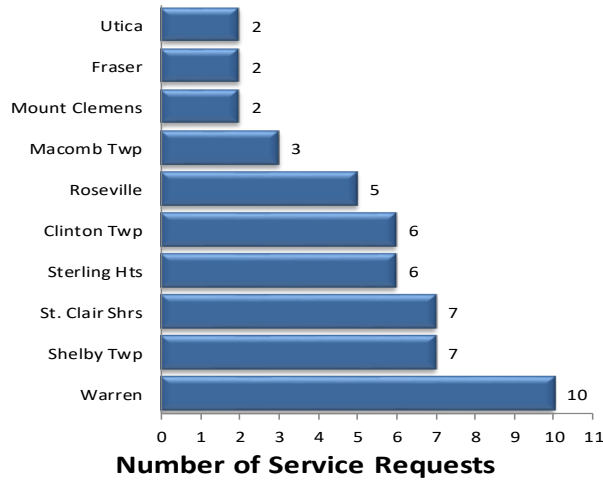


MCDR WEBSITE HITS



A total of 7,341 hits were accrued at <http://roads.macombgov.org/>.

SERVICE REQUESTS PER MUNICIPALITY

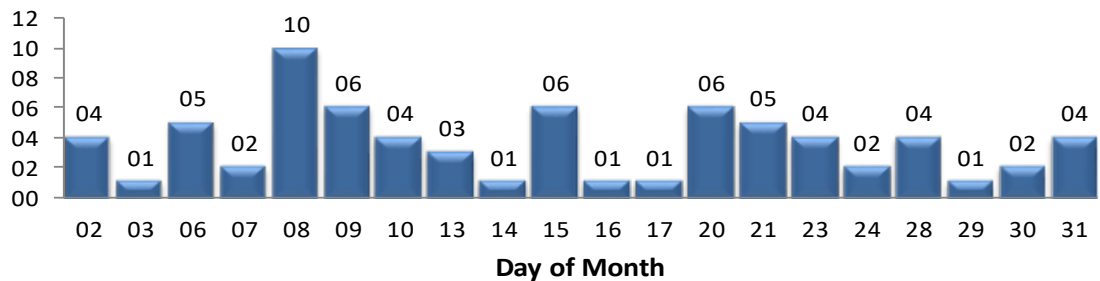


The chart to the left shows how many requests were created per traffic signal location under municipality jurisdiction. The chart to the right shows breakdown of the requests created under MDOT or MCDR / local municipality jurisdiction.

GOVDELIVERY NOTIFICATIONS

In the month of January, the TOC sent out 72 GovDelivery notifications, and increased the number of recipients from 1,765 to 1,801 receiving notifications.

Note: The chart below only shows data for the days GovDelivery notifications were sent from the TOC.



GovDelivery is a tool to notify Macomb County motorists of any incident blocking at least one lane of traffic or causing traffic issues. The notifications are sent after an incident has been verified.

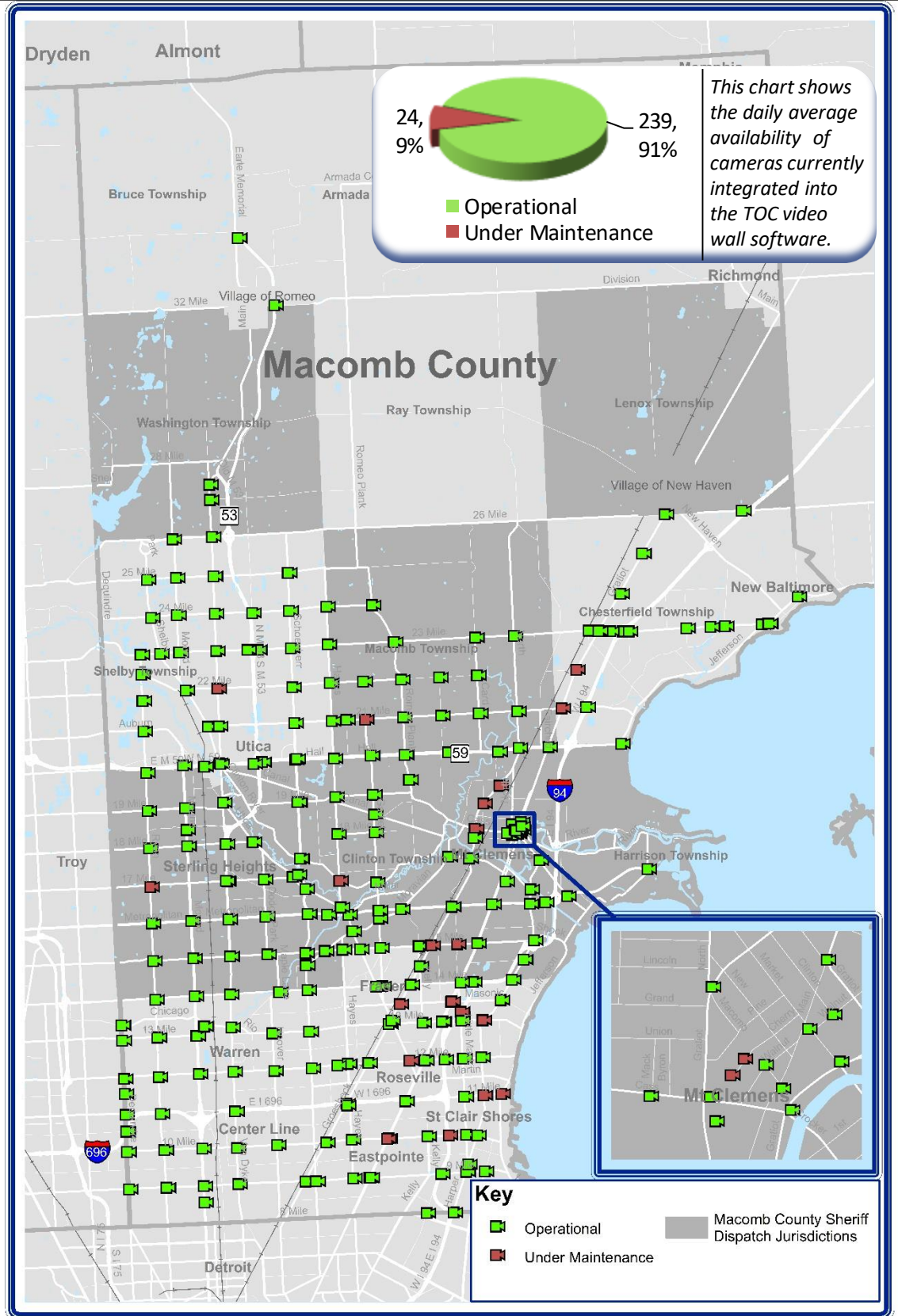
[Sign up for incident notifications on weekdays from 6 a.m. to 6 p.m. causing lane or roadway closures on major Macomb County arterials.](#)



CURRENT CAMERA LOCATIONS

CAMERA COVERAGE

January 2020



During the target month, the TOC added 3 camera to be viewed on the video wall.

Cameras considered to have operational communications are shown in **green**, while cameras found not to have operational communications due to needed maintenance are shown in **red**.

