

MACOMB COUNTY DEPARTMENT OF ROADS

TRAFFIC OPERATIONS CENTER

*"To provide and maintain a reliable real-time traffic operations system, in coordination with county stakeholders, that enables a safe, efficient, and informative travel experience."
- MCDR TOC Mission Statement*

PERFORMANCE MEASURES



February 2021

AECOM

WSP

**INTEGRAL
BLUE**



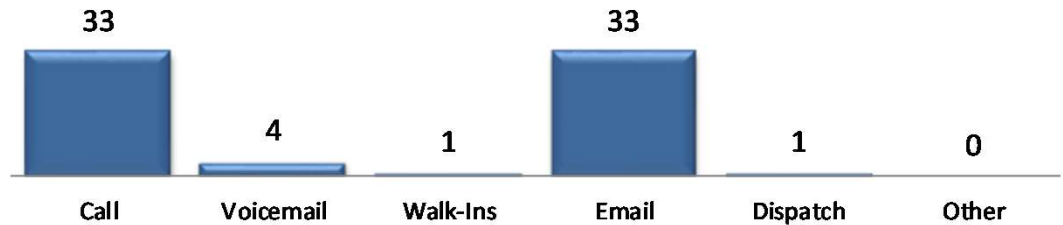
John Abraham, PhD, PE, PTOE
Director of Traffic & Operations
Macomb County Department of Roads
117 S Groesbeck Hwy
Mount Clemens, MI 48043
586-463-8671
JAbraham@RCMCWeb.org

MONTHLY TOC HIGHLIGHT

TOC's collaboration has been the highlight of February 2021. In light of the exciting projects in-progress within the County, the TOC engineering, technician, and ITS maintenance teams' collaborative work has been instrumental. The projects range from pilots (Snowplow's preemption and priority) and new initiatives (VLAN, McCain BSP upgrade, D4 testing) to road construction (M-3 reconstruction, 23 Mile road-widening) and intersection upgrades (23 Mile at Corporate Dr., M-3 at 15 Mile, 2019 RSU, and MDOT 156 D4 conversion). The TOC teams have been working with various MCDR departments (Traffic, Roads, electrical, and electrical technicians), vendors/suppliers (Danlaw, Mixon Hill, Gridsmart, Carrier and Gable, and D4), contractors (Integral Blue and Rauhorn), and MDOT.

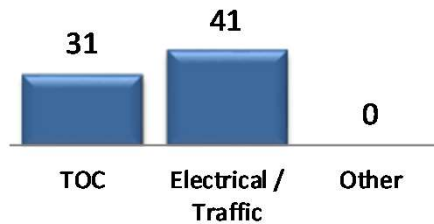
SERVICE REQUESTS

Service Request Source



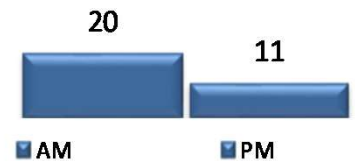
In the month of February, **67** incoming requests regarding traffic signals were received.

Service Request by Dept.

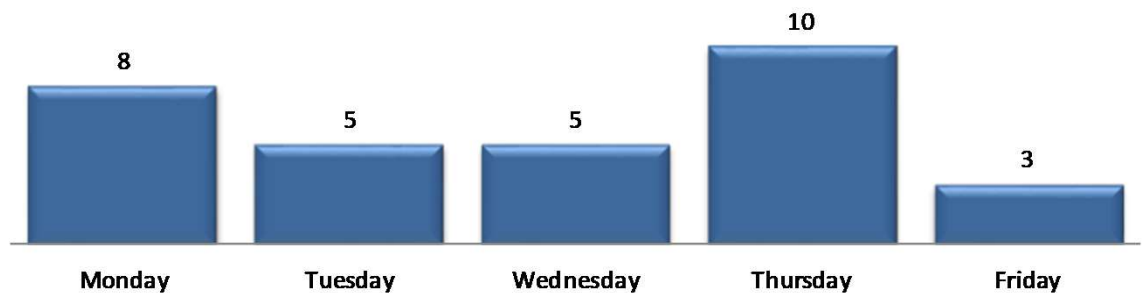


In the month of February, TOC engineers closed **32** service requests within an average of **7** business days.

TOC by Time of Day



Service Request Per Day of Week



TRAFFIC OPERATIONS

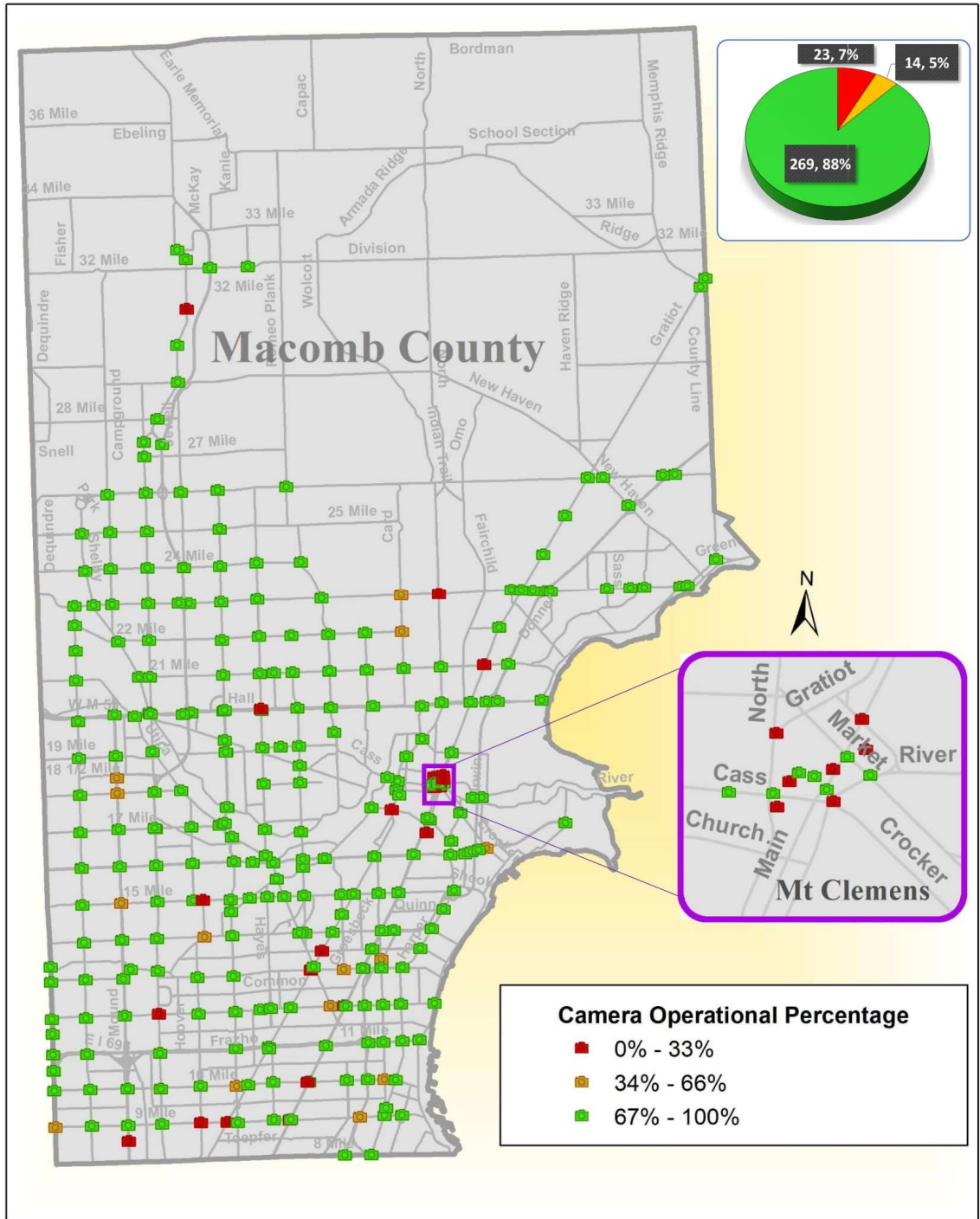
February 2021



CCTV TRAFFIC CAMERA SUMMARY

CAMERA COVERAGE

February 2021



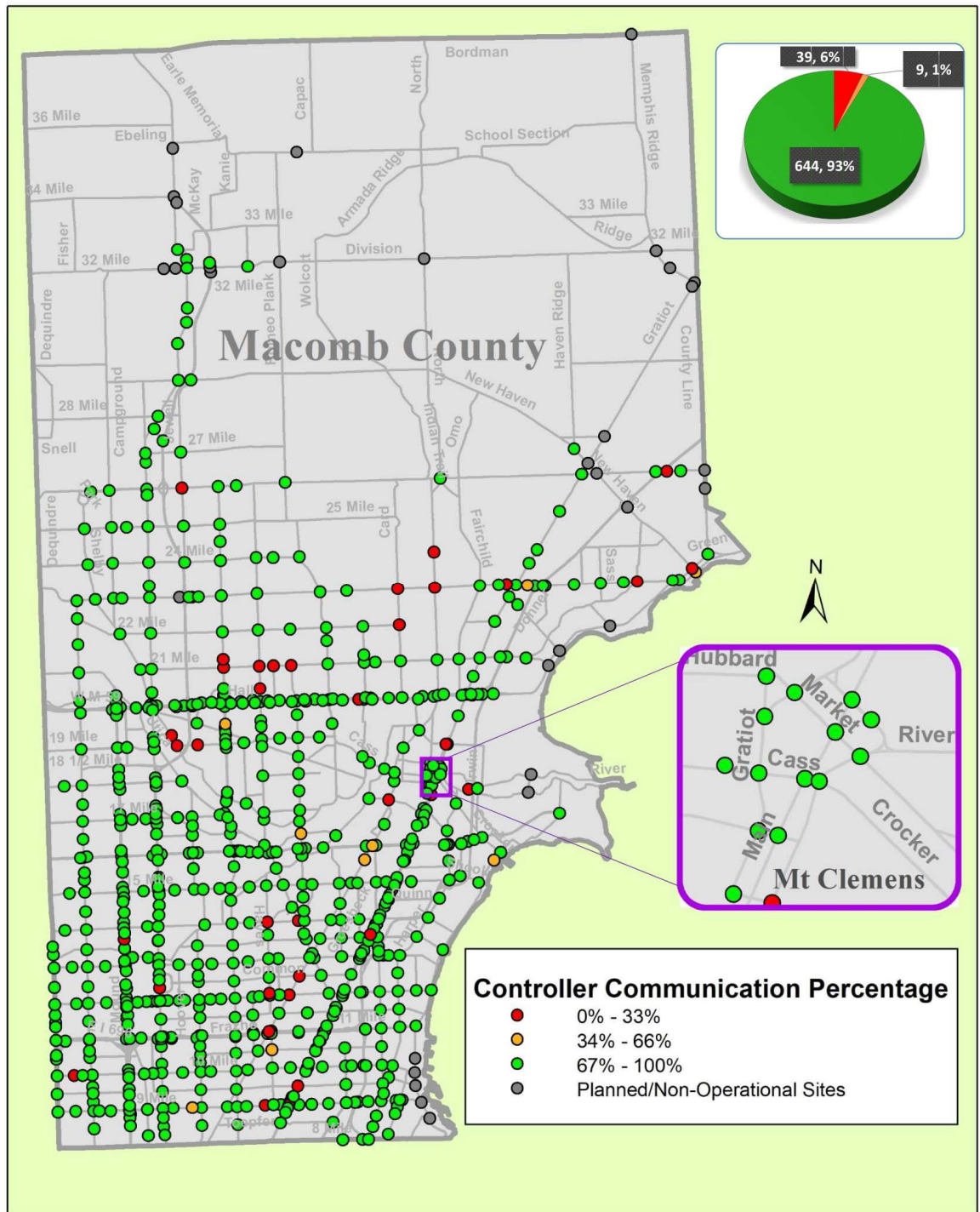
The map above represents the CCTV camera operational percentages for the month of February 2021.



REGIONAL COMMUNICATIONS SUMMARY

ITS MAINTENANCE

February 2021



The map above represents the communication availability percentages of Traffic Signal Controllers for the month of February 2021.



HIGH IMPACT CORRIDOR

COMMUNICATIONS AVAILABILITY

Corridor	Current Month	Previous Month	Change
9 Mile	95%	95%	0%
14 Mile	98%	99%	-1%
15 Mile	98%	99%	-1%
Metro Parkway	97%	99%	-2%
Hall (M-59)	97%	99%	-2%
Dequindre	98%	87%	11%
Ryan	96%	99%	-3%
Mound	96%	99%	-3%
Hoover	99%	99%	0%
Schoenherr	95%	90%	5%
Hayes	89%	88%	1%
Gratiot (M-3)	95%	95%	0%
Harper	99%	97%	2%

The table above represents a one-time monthly snapshot of communications along major corridors in Macomb County.

FIELD WORK

34 sites visited by TOC staff and 3 sites visited by IT/ITS maintenance technicians and the MCDR Electrical Group in February 2021.

FIELD WORK

Time of signal change	Loc #	Intersection	Reason for signal change
02/03/2021 13:11	184	Gratiot (M-3)/12 Mile Road	Construction
02/03/2021 13:12	552	Gratiot SB (M-3)/Crossover 380' N of 12 Mile Road	Construction
02/03/2021 13:12	553	Gratiot NB (M-3)/Crossover 366' S of 12 Mile Road	Construction
02/11/2021 11:30	840	31 Mile Road/Van Dyke	Traffic Study
02/16/2021 15:32	1000	27 Mile Road/Van Dyke	Traffic Study
02/16/2021 15:33	327	Van Dyke/West Road	Traffic Study
02/16/2021 15:33	328	26 Mile Road/Van Dyke	Traffic Study
02/16/2021 15:33	1041	Van Dyke Avenue (Target/Kroger Dr./800' south of 24 Mile Road)	Traffic Study
02/16/2021 15:33	509	25 Mile Road/Van Dyke	Traffic Study
02/16/2021 15:33	323	24 Mile Road/Van Dyke	Traffic Study

Traffic signal changes performed by TOC engineers

MAINTENANCE

February 2021



FIELD WORK (Continued)

MAINTENANCE

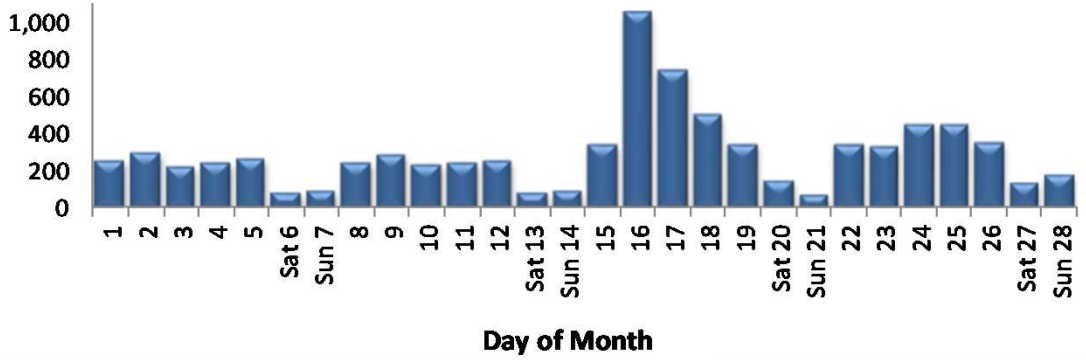
February 2021

Time of signal change	Loc #	Intersection	Reason for signal change
02/16/2021 15:33	747	Van Dyke/North of 23 Mile - Shelby Twp. Civic Ce	Traffic Study
02/16/2021 15:33	324	23 Mile Road/Van Dyke	Traffic Study
02/16/2021 15:33	430	22 Mile Road/Van Dyke	Traffic Study
02/16/2021 15:33	43	21 Mile Road/Van Dyke	Traffic Study
02/16/2021 15:33	208	Hahn/Van Dyke	Traffic Study
02/16/2021 15:33	212	Hall Road (M-59)/Van Dyke	Traffic Study
02/16/2021 15:33	833	Canal/Van Dyke	Traffic Study
02/16/2021 15:33	213	Riverland/Van Dyke	Traffic Study
02/16/2021 15:33	325	Utica Road/Van Dyke	Traffic Study
02/16/2021 15:33	745	Dawn (19 Mile Road)/Van Dyke	Traffic Study
02/16/2021 15:34	408	East Avis Dr./Dequindre Road	Traffic Study
02/16/2021 15:34	26	Dequindre/Whitcomb	Traffic Study
02/16/2021 15:34	105	Dequindre/13 Mile Road	Traffic Study
02/16/2021 15:35	409	Common/Dequindre	Traffic Study
02/16/2021 15:35	106	Dequindre/12 Mile Road	Traffic Study
02/16/2021 15:35	380	Dequindre/Universal Mall	Traffic Study
02/16/2021 15:35	154	Dequindre/Madison Solberg Towers	Traffic Study
02/16/2021 15:35	9	Dequindre/Parkview	Traffic Study
02/16/2021 15:35	96	Dequindre/11 Mile	Traffic Study
02/16/2021 15:35	438	Dequindre/I-696 Service Drive (Westbound/Nort	Traffic Study
02/16/2021 15:35	403	Dequindre/I-696 S Service Drive	Traffic Study
02/16/2021 15:35	104	Dequindre/10 Mile Road	Traffic Study
02/16/2021 15:35	103	Dequindre/Stephens	Traffic Study
02/16/2021 15:35	102	Dequindre/Nine Mile Road	Traffic Study
02/17/2021 16:04	1000	27 Mile Road/Van Dyke	Traffic Study
02/23/2021 8:44	193	Groesbeck (M-97)/Hall Road (M-59)	Service Request



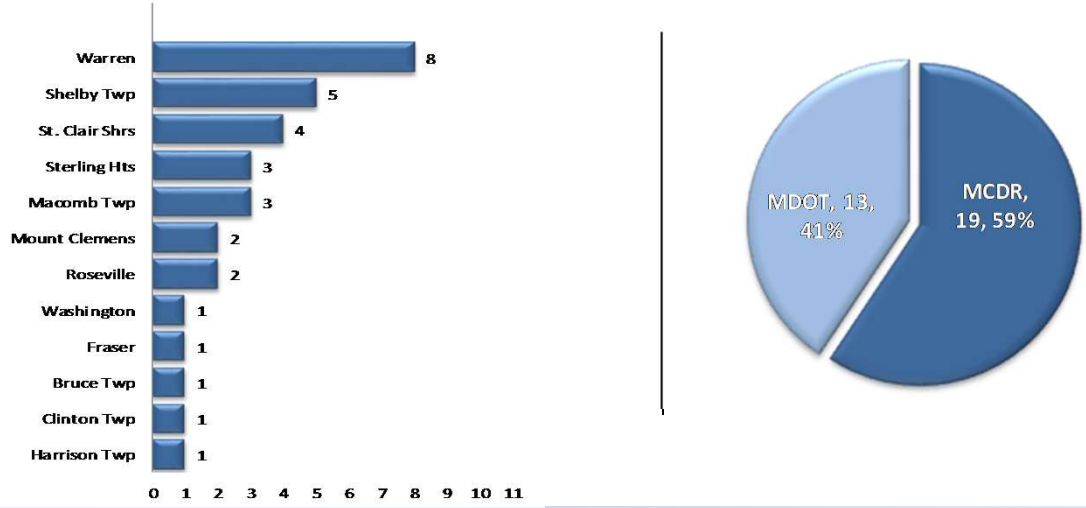
Traffic signal changes performed by TOC engineers (continued)

MCDR WEBSITE HITS



A total of **8,350** hits were accrued at <http://roads.macombgov.org/>.

SERVICE REQUESTS PER MUNICIPALITY

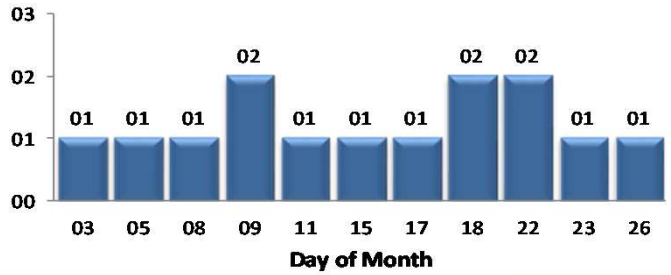


The chart to the left shows how many requests were created per traffic signal location under municipality jurisdiction. The chart to the right shows breakdown of the requests created under MDOT or MCDR / local municipality jurisdiction.

GOVDELIVERY NOTIFICATIONS

In the month of February, the TOC sent out **14** GovDelivery notifications, and increased the number of recipients from **2,405** to **2,444** receiving notifications.

Note: The chart below only shows data for the days GovDelivery notifications were sent from the TOC.



GovDelivery is a tool to notify Macomb County motorists of any incident blocking at least one lane of traffic or causing traffic issues. The notifications are sent after an incident has been verified.

[Sign up for incident notifications on weekdays from 6 a.m. to 6 p.m. causing lane or roadway closures on major Macomb County arterials.](#)

