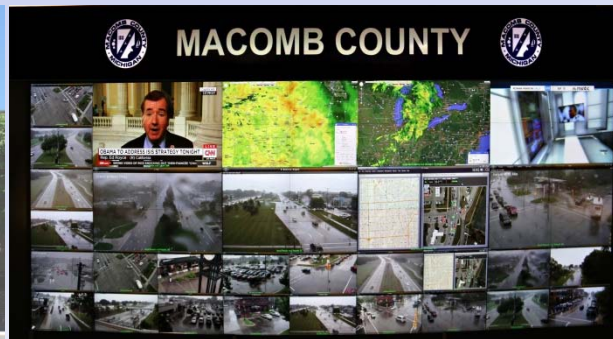


# MACOMB COUNTY DEPARTMENT OF ROADS

## TRAFFIC OPERATIONS CENTER

*"To provide and maintain a reliable real-time traffic operations system, in coordination with county stakeholders, that enables a safe, efficient, and informative travel experience."*

## PERFORMANCE MEASURES



**February 2019**



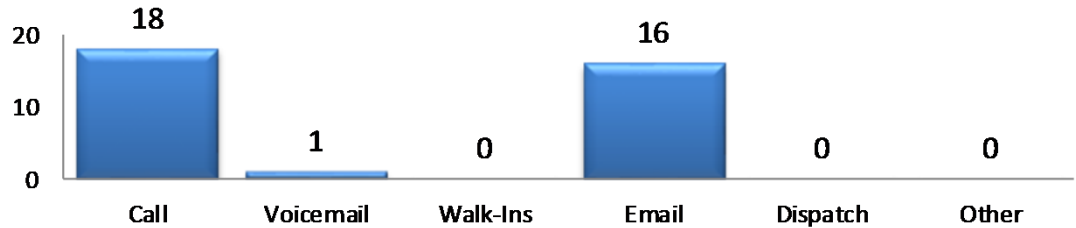
**John Abraham, PhD, PE, PTOE**  
Director of Traffic & Operations  
Macomb County Department of Roads  
117 S Groesbeck Hwy  
Mount Clemens, MI 48043  
586-463-8671  
[JAbraham@RCMCWeb.org](mailto:JAbraham@RCMCWeb.org)

# INFORMATIVE TOC HIGHLIGHT

On February 6th 2019, the weather forecast called for freezing rain and sleet from 12a to midday. The media reported the early morning commute would be especially impacted. The Traffic Operations Center made special accommodations by staffing after hours to host County Executive Mark Hackel and local news stations to use the video wall and report road conditions to the public.

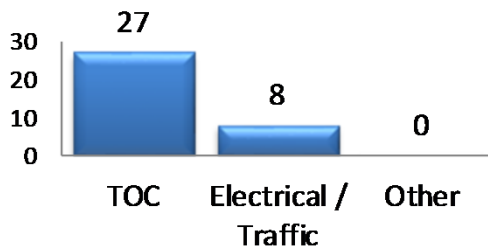
## SERVICE REQUESTS

Source



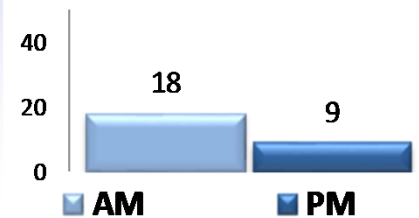
In the month of February, 35 incoming requests regarding traffic signals were received. The 'Source' chart shows how the service request was received by the TOC.

Service Request by Dept.

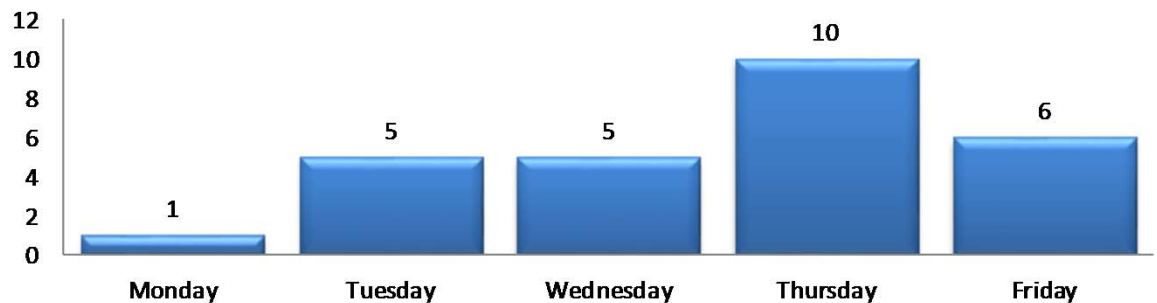


In the month of February, the TOC engineers closed 30 service requests within an average of 5 business days.

TOC AM/PM Requests



Service Request Per Day of Week



TRAFFIC OPERATIONS

February 2019

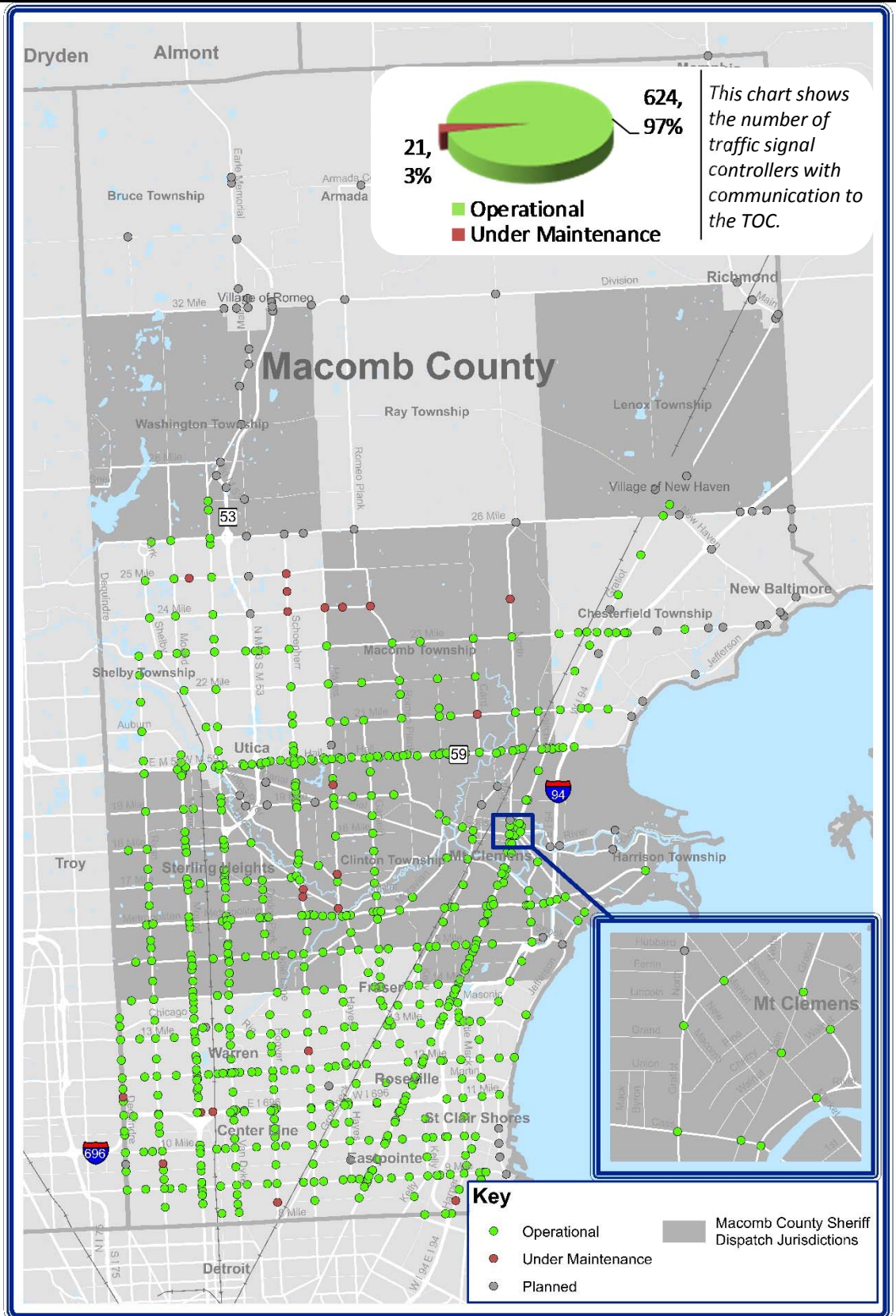


AECOM

# REGIONAL COMMUNICATIONS SUMMARY

## ITS MAINTENANCE

February 2019



**During the target month, the TOC added 0 intersections to our operational communications network.**

Locations considered to have operational communications are shown in **green**, while locations found not to have operational communications due to needed maintenance at the time of the snapshot are shown in **red**. Locations that are "Planned" have not yet been integrated into TOC network.



# COUNTY CORRIDOR COMMUNICATIONS

## AVAILABILITY

Corridor	Current Month	Previous Month	Change
9 Mile	100%	100%	0%
14 Mile	100%	73%	27%
15 Mile	100%	100%	0%
Metro Parkway	100%	100%	0%
Hall (M-59)	100%	85%	15%
Dequindre	92%	100%	-8%
Ryan	96%	100%	-4%
Mound	98%	94%	4%
Hoover	93%	100%	-7%
Schoenherr	85%	90%	-5%
Hayes	84%	88%	-4%
Gratiot (M-3)	100%	98%	2%
Harper	95%	100%	-5%

The table above represents a one-time monthly snapshot of communications along major corridors in Macomb County. Corridors which are considered to have operational communications (90% and above) are shown in **green**, while corridors found not to have operational communications (<90%) at the time of the snapshot are shown in **red**.

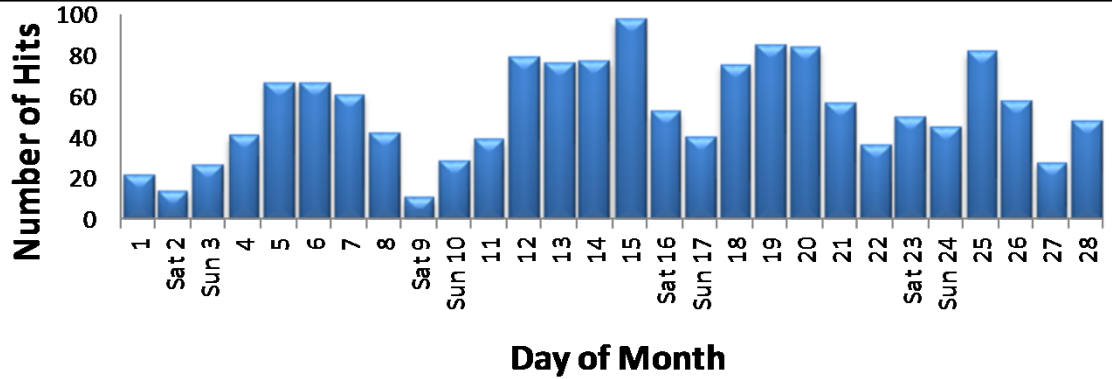
## EXECUTED TRAFFIC SIGNAL UPGRADES

February	Location	Upgrade
00		No cut over information for this month

Tracks the roadway upgrades executed in Macomb County, including those done by other transportation agencies, also lists a description of the upgrades performed.

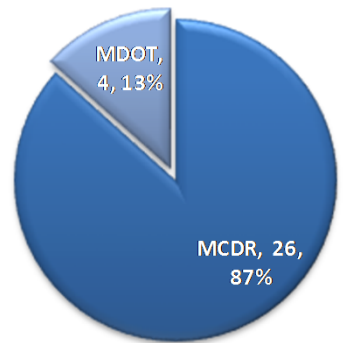
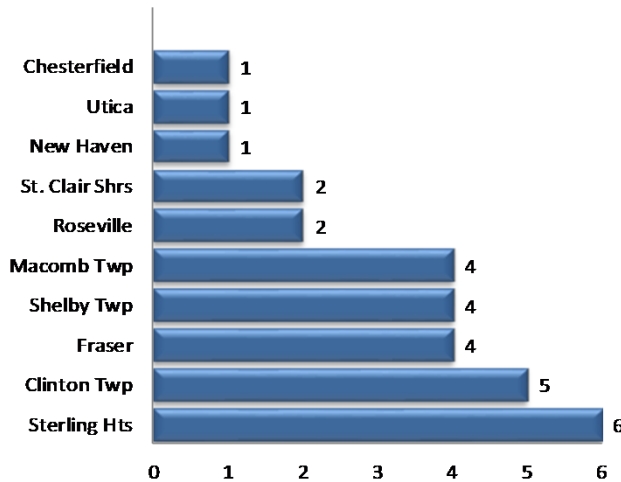


## MCDR WEBSITE HITS



A total of 1,621 hits were accrued at <http://roads.macombgov.org/>.

## SERVICE REQUESTS PER MUNICIPALITY



The chart to the left shows how many requests were created per traffic signal location under municipality jurisdiction and the chart to the right shows breakdown of the requests created under MDOT or MCDR / local municipality jurisdiction.

## GOVDELIVERY NOTIFICATIONS

In the month of February, the TOC sent out 64 GovDelivery notifications, and increased the number of recipients from 1,275 to 1,299 receiving notifications.

Note: The chart below only shows data for the days GovDelivery notifications were sent from the TOC.



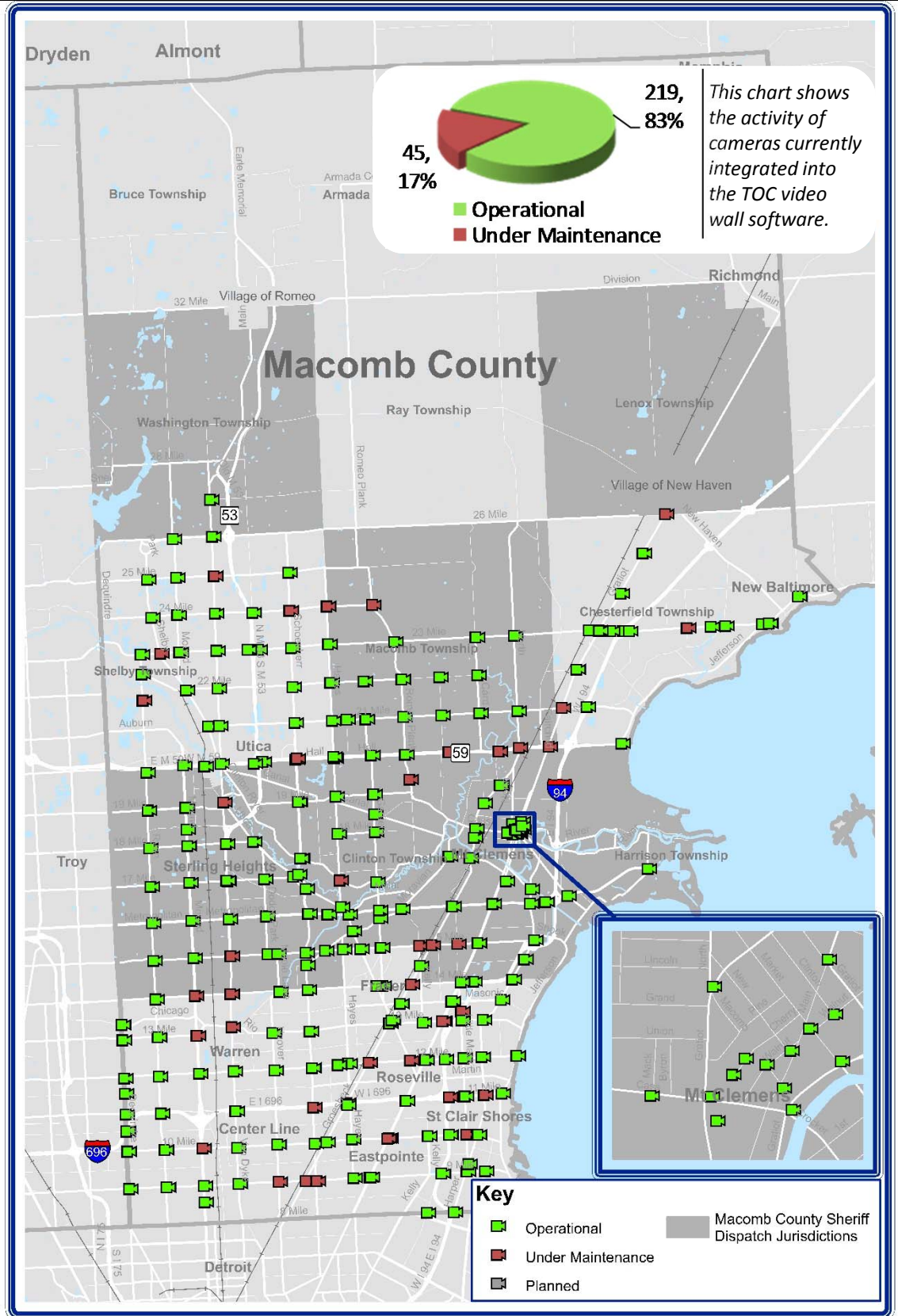
GovDelivery is a tool to notify Macomb County motorists of any incident blocking at least one lane of traffic, or causing traffic issues. The notifications are only sent after the incident has been verified.

[Sign up for incident notifications on weekdays from 6 a.m. to 6 p.m. causing lane or roadway closures on major Macomb County arterials.](#)

# CURRENT CAMERA LOCATIONS

## CAMERA COVERAGE

February 2019



**During the target month, the TOC added 2 cameras to be viewed on the video wall.**

Cameras considered to have operational communications are shown in **green**, while cameras found not to have operational communications due to needed maintenance at the time of the snapshot are shown in **red**. Cameras that are "Planned" have not yet been integrated into TOC video wall software.

