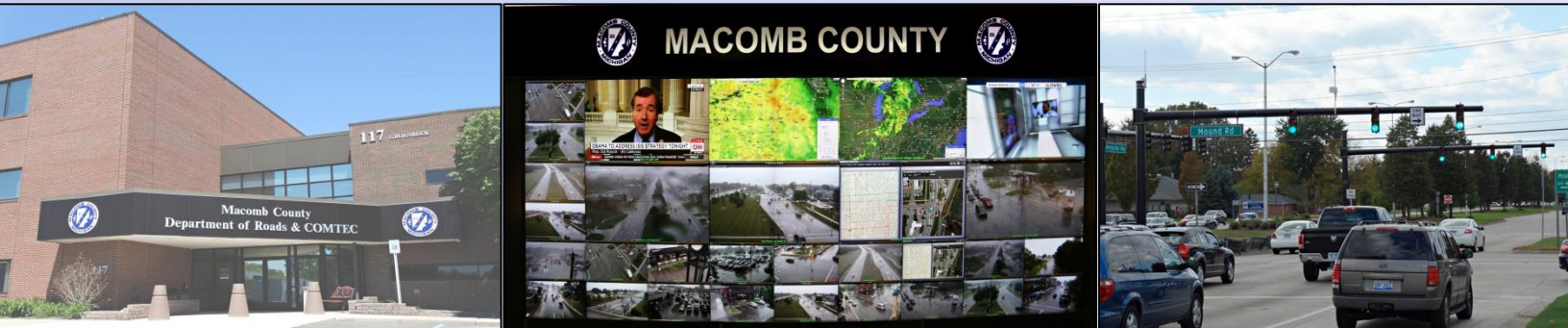


# MACOMB COUNTY DEPARTMENT OF ROADS

## TRAFFIC OPERATIONS CENTER

*"To provide and maintain a reliable real-time traffic operations system, in coordination with county stakeholders, that enables a safe, efficient, and informative travel experience."  
- MCDR-TOC Mission Statement*

## PERFORMANCE MEASURES



**December 2019**

**AECOM**

**WSP**

**INTEGRAL  
BLUE**



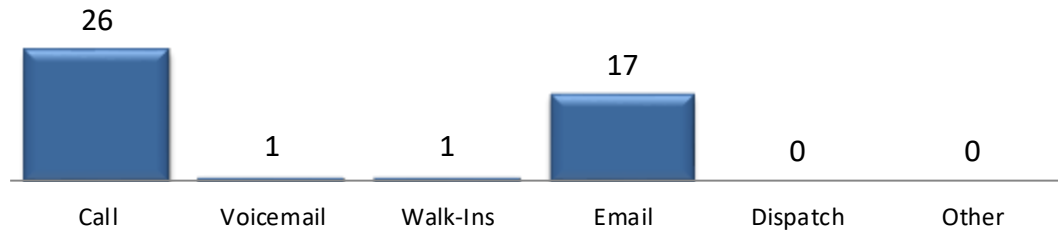
**John Abraham, PhD, PE, PTOE**  
Director of Traffic & Operations  
Macomb County Department of Roads  
117 S Groesbeck Hwy  
Mount Clemens, MI 48043  
586-463-8671  
[JAbraham@RCMCWeb.org](mailto:JAbraham@RCMCWeb.org)

# MONTHLY TOC HIGHLIGHT

In the month of December, the Macomb County Department of Roads (MCDR) Traffic Operations Center (TOC) collaborated with the Sterling Heights Fire Department for an emergency vehicle preemption pilot project. The project involves the use roadside units (RSU). RSU's are transceiver devices that allow for wireless communication from roadway infrastructure to vehicles. One of the many features that RSU's can provide is preemptive signal prioritization for emergency vehicles. Signal prioritization allows the RSU to acknowledge an emergency vehicle is approaching and change the signal to green for safer passage through an intersection.

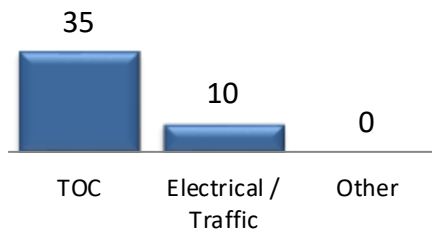
## SERVICE REQUESTS

### Service Request Source



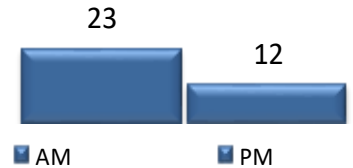
*In the month of December, 47 incoming requests regarding traffic signals were received.*

### Service Request by Dept.

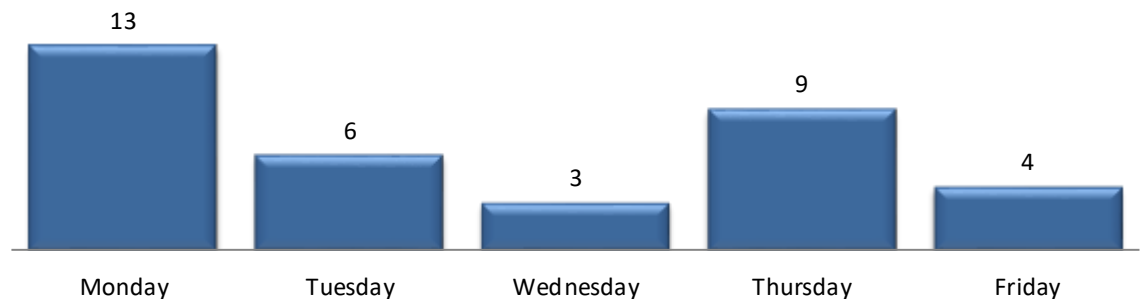


*In the month of December, the TOC engineers closed 48 service requests within an average of 6 business days.*

### TOC by Time of Day



### Service Request Per Day of Week



TRAFFIC OPERATIONS

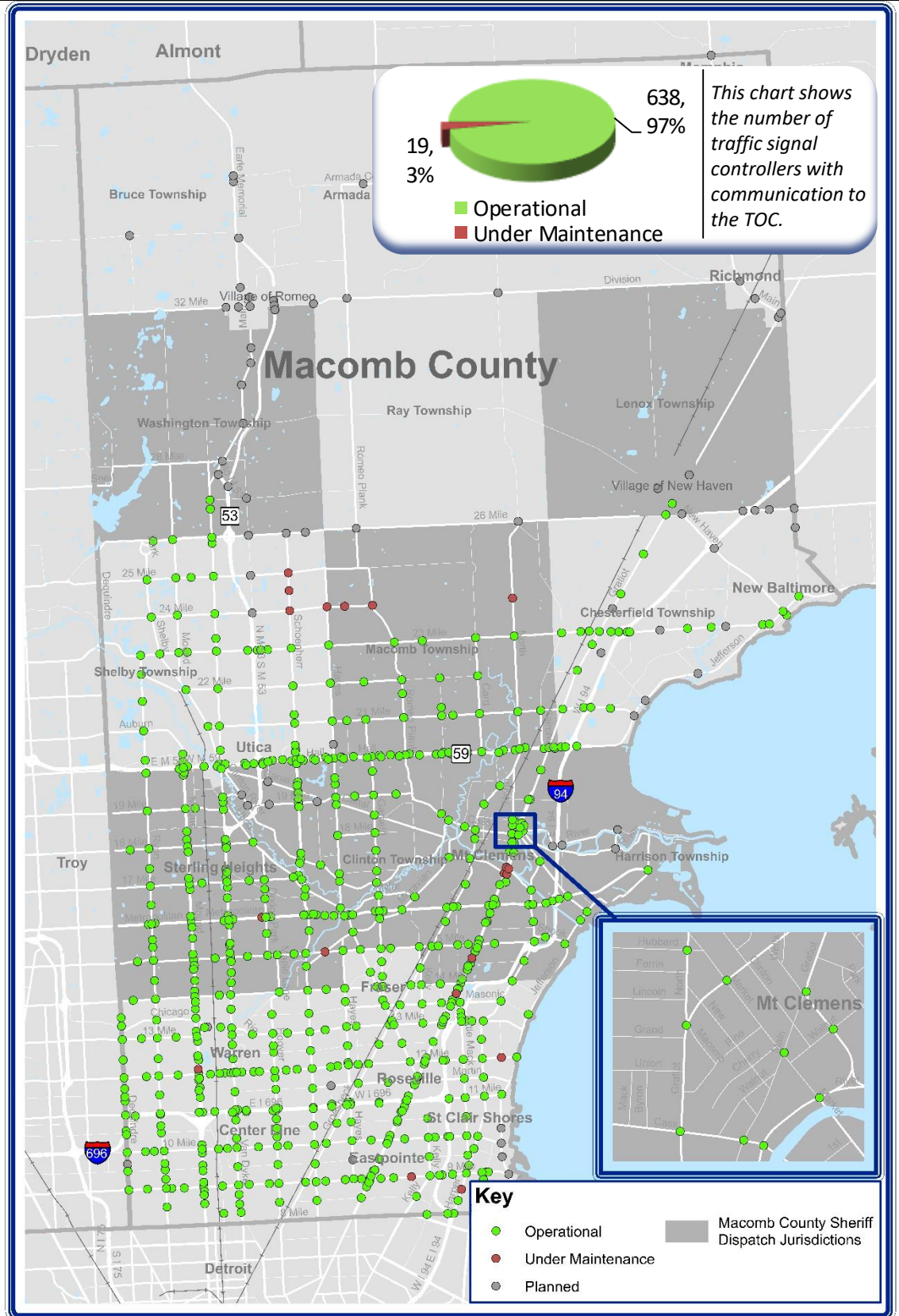
December 2019



# REGIONAL COMMUNICATIONS SUMMARY

## ITS MAINTENANCE

December 2019



During the target month, the TOC added 0 intersections to the operational communications network.

Locations considered to have operational communications are shown in green, while locations found not to have operational communications due to needed maintenance are shown in red. Locations that are "Planned" have not yet been integrated into TOC network.



# HIGH IMPACT CORRIDOR COMMUNICATIONS AVAILABILITY

Corridor	Current Month	Previous Month	Change
9 Mile	96%	96%	0%
14 Mile	100%	100%	0%
15 Mile	95%	100%	-5%
Metro Parkway	97%	100%	-3%
Hall (M-59)	100%	100%	0%
Dequindre	100%	100%	0%
Ryan	100%	100%	0%
Mound	98%	100%	-2%
Hoover	100%	100%	0%
Schoenherr	92%	92%	0%
Hayes	96%	96%	0%
Gratiot (M-3)	92%	97%	-5%
Harper	95%	95%	0%

The table above represents a one-time monthly snapshot of communications along major corridors in Macomb County. Corridors which are considered to have operational communications (90% and above) are shown in green, while corridors found not to have operational communications (<90%) at the time of the snapshot are shown in red.

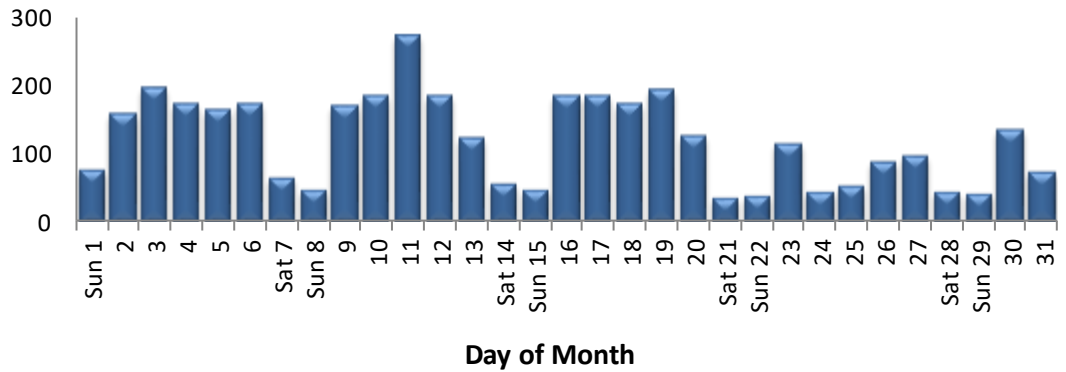
## EXECUTED TRAFFIC SIGNAL UPGRADES

December	Location	Upgrade
N/A	N/A	N/A

Tracks the roadway upgrades executed in Macomb County, including those done by other transportation agencies, also lists a description of the upgrades performed.

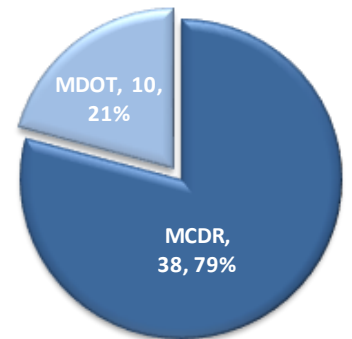
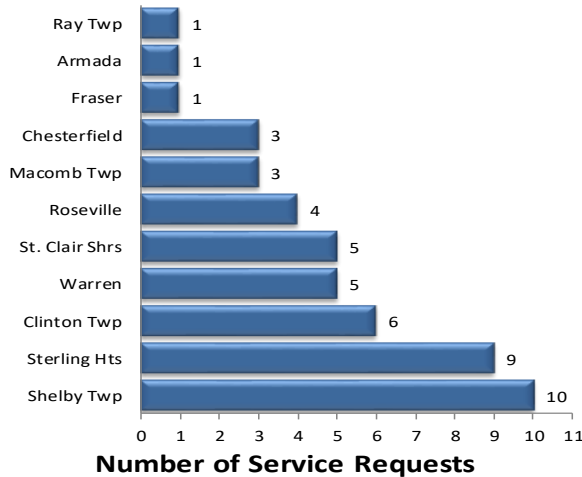


## MCDR WEBSITE HITS



A total of 3,626 hits were accrued at <http://roads.macombgov.org/>.

## SERVICE REQUESTS PER MUNICIPALITY

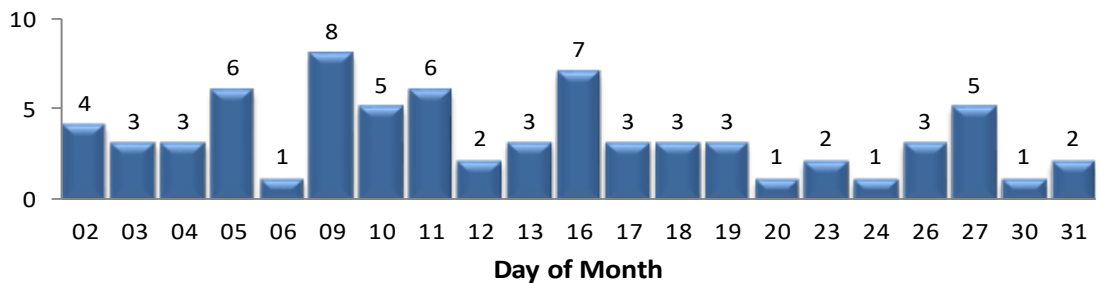


The chart to the left shows how many requests were created per traffic signal location under municipality jurisdiction. The chart to the right shows breakdown of the requests created under MDOT or MCDR / local municipality jurisdiction.

## GOVDELIVERY NOTIFICATIONS

In the month of December, the TOC sent out 72 GovDelivery notifications, and increased the number of recipients from 1,729 to 1,765 receiving notifications.

Note: The chart below only shows data for the days GovDelivery notifications were sent from the TOC.



GovDelivery is a tool to notify Macomb County motorists of any incident blocking at least one lane of traffic or causing traffic issues. The notifications are sent after an incident has been verified.

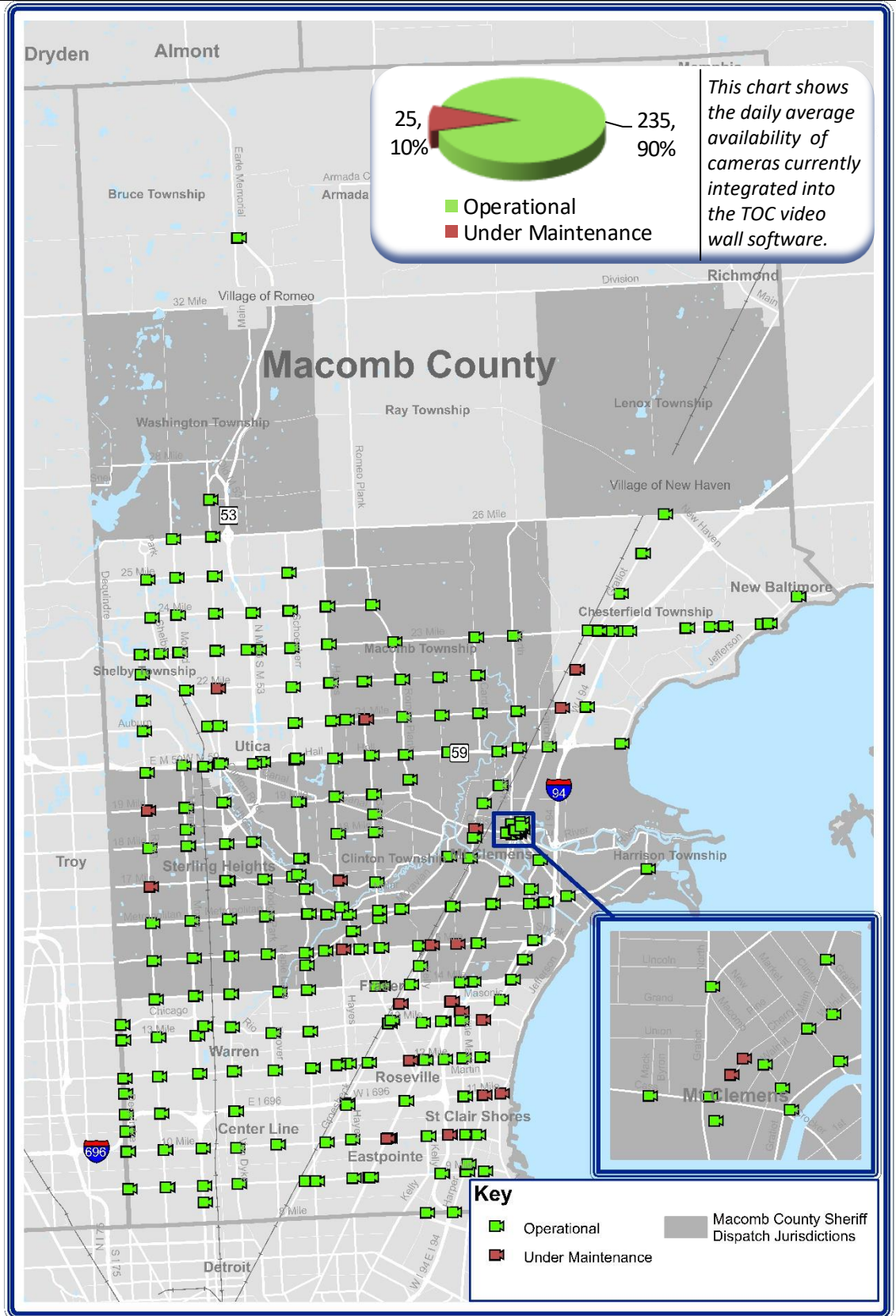
[Sign up for incident notifications on weekdays from 6 a.m. to 6 p.m. causing lane or roadway closures on major Macomb County arterials.](#)



# CURRENT CAMERA LOCATIONS

## CAMERA COVERAGE

December 2019



During the target month, the TOC added 3 cameras to be viewed on the video wall.

Cameras considered to have operational communications are shown in green, while cameras found not to have operational communications due to needed maintenance are shown in red.

