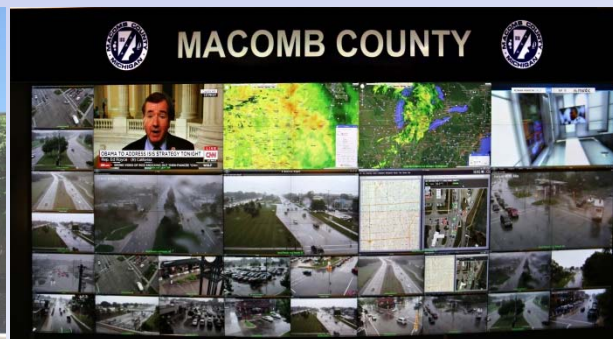


# MACOMB COUNTY DEPARTMENT OF ROADS

## TRAFFIC OPERATIONS CENTER

*"To provide and maintain a reliable real-time traffic operations system, in coordination with county stakeholders, that enables a safe, efficient, and informative travel experience."*

## PERFORMANCE MEASURES



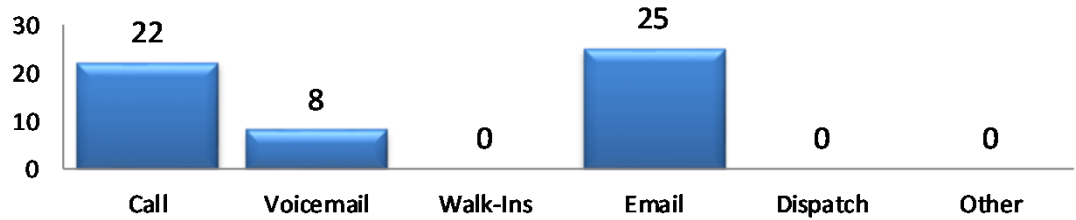
**April 2019**

# INFORMATIVE TOC HIGHLIGHT

On April 27<sup>th</sup>, 2019, Macomb County Department of Roads Traffic Operations Center assisted in The Let's Move Festival of Races throughout the Macomb County jurisdictions of Mount Clemens. The TOC was staffed by TOC operators that monitored vehicular and pedestrian traffic, and coordination with the Sheriff Department staff in real time during the event. The event was well executed and saw little impact to the surrounding area.

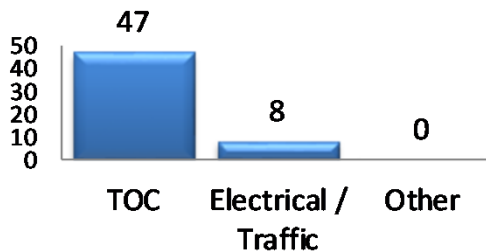
## SERVICE REQUESTS

Source



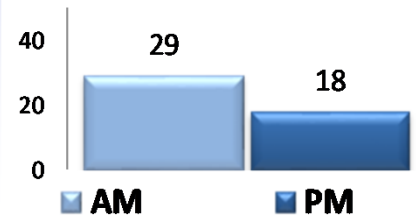
In the month of April, 47 incoming requests regarding traffic signals were received. The 'Source' chart shows how the service request was received by the TOC.

Service Request by Dept.

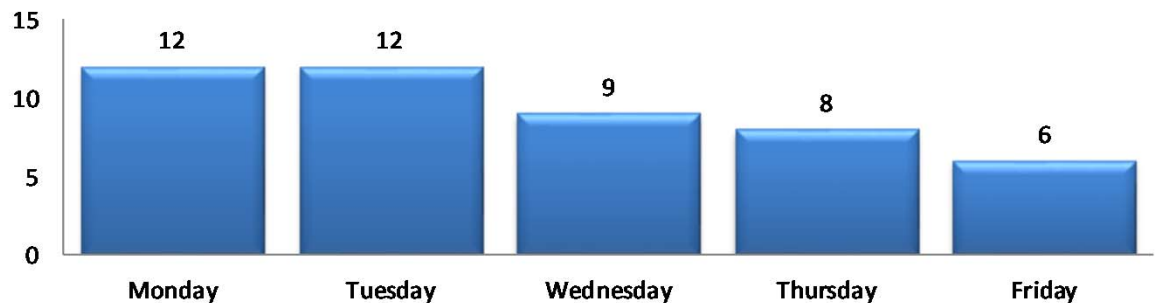


In the month of April, the TOC engineers closed 40 service requests within an average of 5 business days.

TOC AM/PM Requests



Service Request Per Day of Week



TRAFFIC OPERATIONS

April 2019

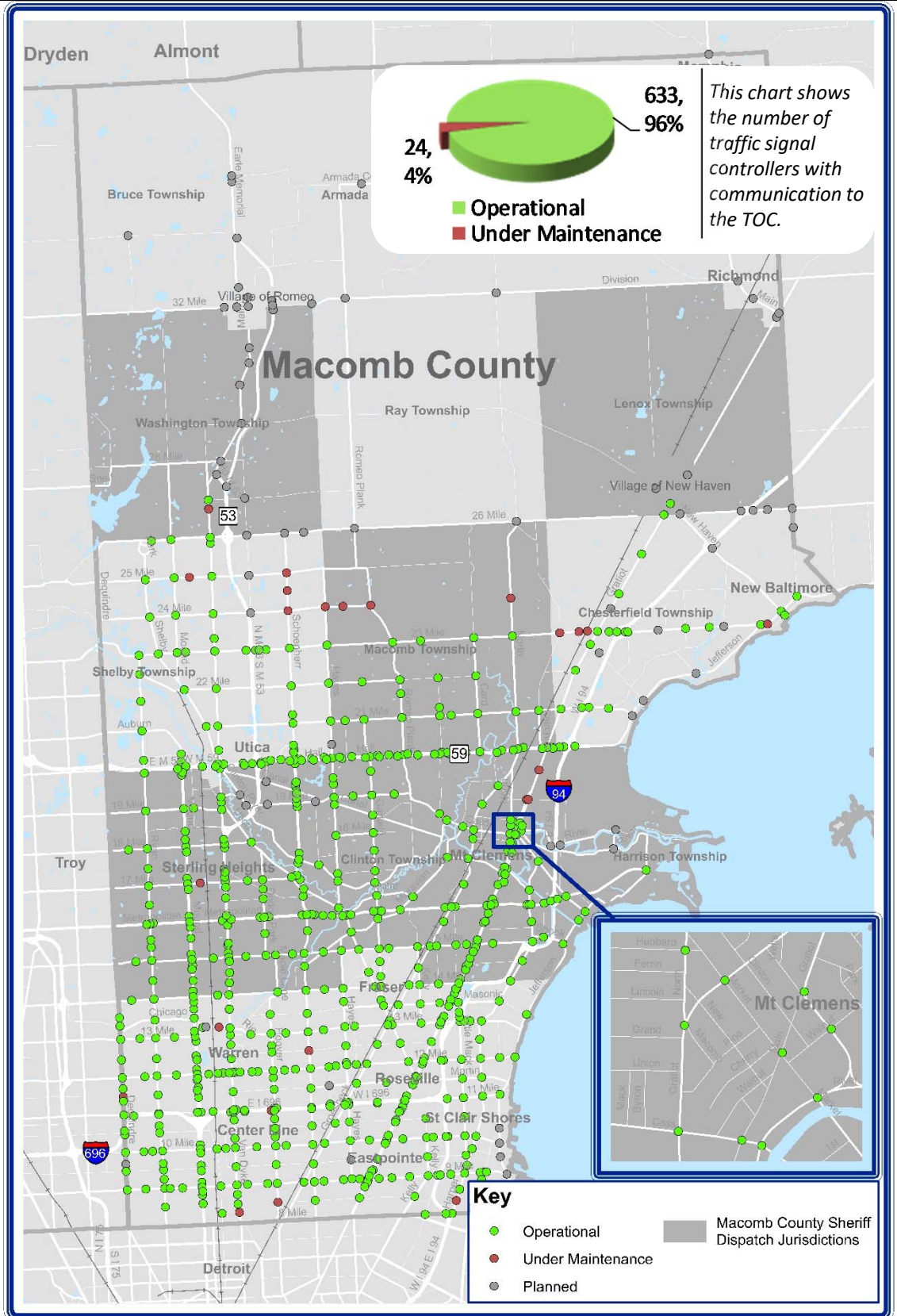


AECOM

# REGIONAL COMMUNICATIONS SUMMARY

## ITS MAINTENANCE

April 2019



**During the target month, the TOC added 0 intersections to our operational communications network.**

Locations considered to have operational communications are shown in **green**, while locations found not to have operational communications due to needed maintenance at the time of the snapshot are shown in **red**. Locations that are "Planned" have not yet been integrated into TOC network.



# COUNTY CORRIDOR COMMUNICATIONS

## AVAILABILITY

Corridor	Current Month	Previous Month	Change
9 Mile	100%	100%	0%
14 Mile	100%	100%	0%
15 Mile	100%	100%	0%
Metro Parkway	100%	97%	3%
Hall (M-59)	100%	100%	0%
Dequindre	92%	92%	0%
Ryan	100%	100%	0%
Mound	100%	100%	0%
Hoover	93%	93%	0%
Schoenherr	90%	90%	0%
Hayes	96%	96%	0%
Gratiot (M-3)	96%	100%	-4%
Harper	95%	95%	0%

The table above represents a one-time monthly snapshot of communications along major corridors in Macomb County. Corridors which are considered to have operational communications (90% and above) are shown in **green**, while corridors found not to have operational communications (<90%) at the time of the snapshot are shown in **red**.

## EXECUTED TRAFFIC SIGNAL UPGRADES

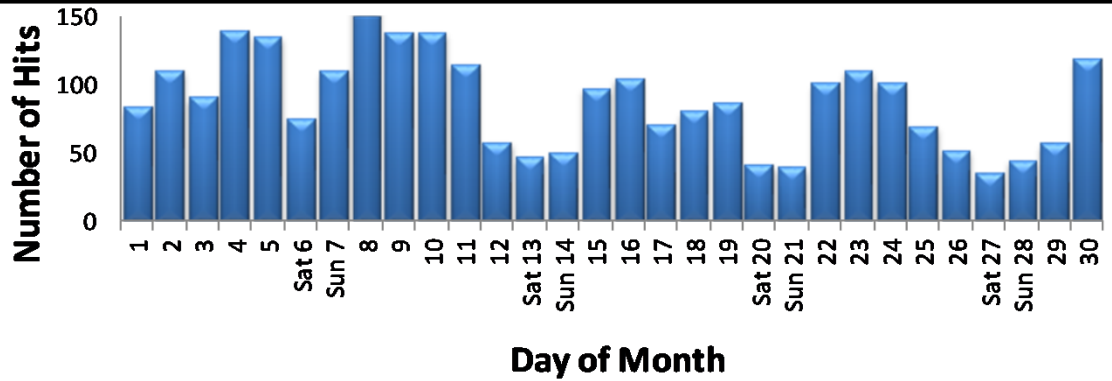
April	Location	Upgrade
00		No cut over information for this month

Tracks the roadway upgrades executed in Macomb County, including those done by other transportation agencies, also lists a description of the upgrades performed.



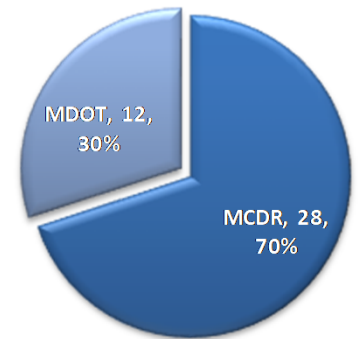
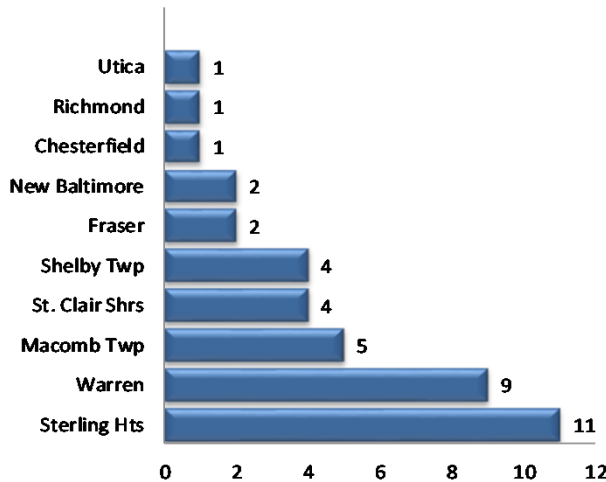


## MCDR WEBSITE HITS



A total of 2,723 hits were accrued at <http://roads.macombgov.org/>.

## SERVICE REQUESTS PER MUNICIPALITY

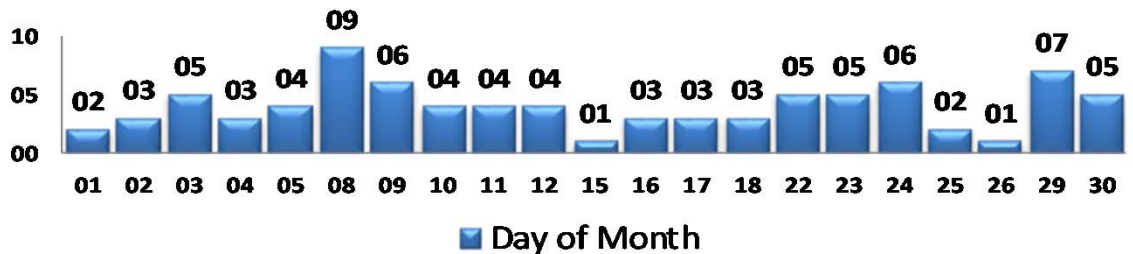


The chart to the left shows how many requests were created per traffic signal location under municipality jurisdiction and the chart to the right shows breakdown of the requests created under MDOT or MCDR / local municipality jurisdiction.

## GOVDELIVERY NOTIFICATIONS

In the month of April, the TOC sent out 85 GovDelivery notifications, and increased the number of recipients from 1,391 to 1,438 receiving notifications.

Note: The chart below only shows data for the days GovDelivery notifications were sent from the TOC.



GovDelivery is a tool to notify Macomb County motorists of any incident blocking at least one lane of traffic, or causing traffic issues. The notifications are only sent after the incident has been verified.

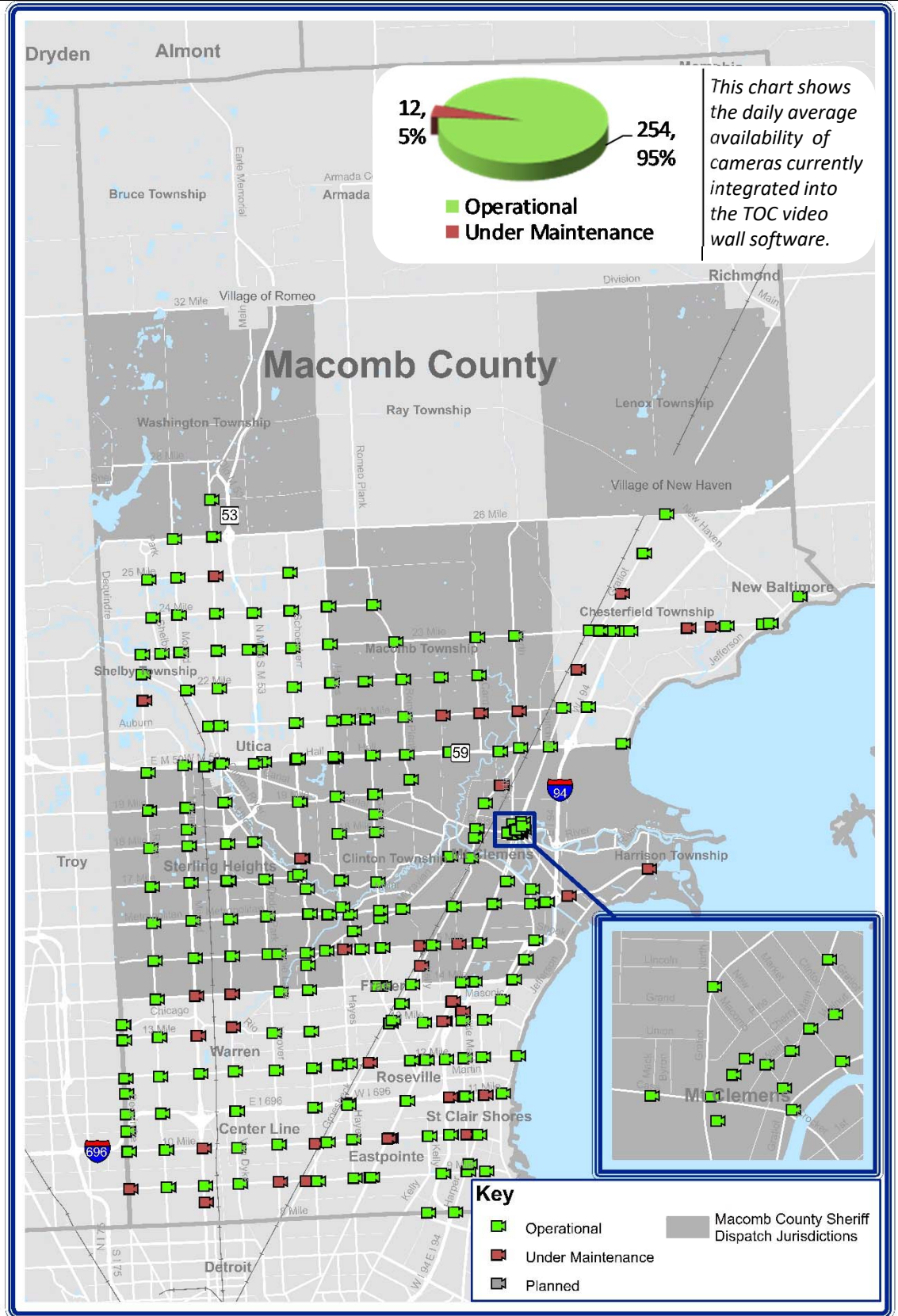
[Sign up for incident notifications on weekdays from 6 a.m. to 6 p.m. causing lane or roadway closures on major Macomb County arterials.](#)



# CURRENT CAMERA LOCATIONS

## CAMERA COVERAGE

April 2019



**During the target month, the TOC added 2 cameras to be viewed on the video wall.**

Cameras considered to have operational communications are shown in **green**, while cameras found not to have operational communications due to needed maintenance at the time of the snapshot are shown in **red**. Cameras that are "Planned" have not yet been integrated into TOC video wall software.

