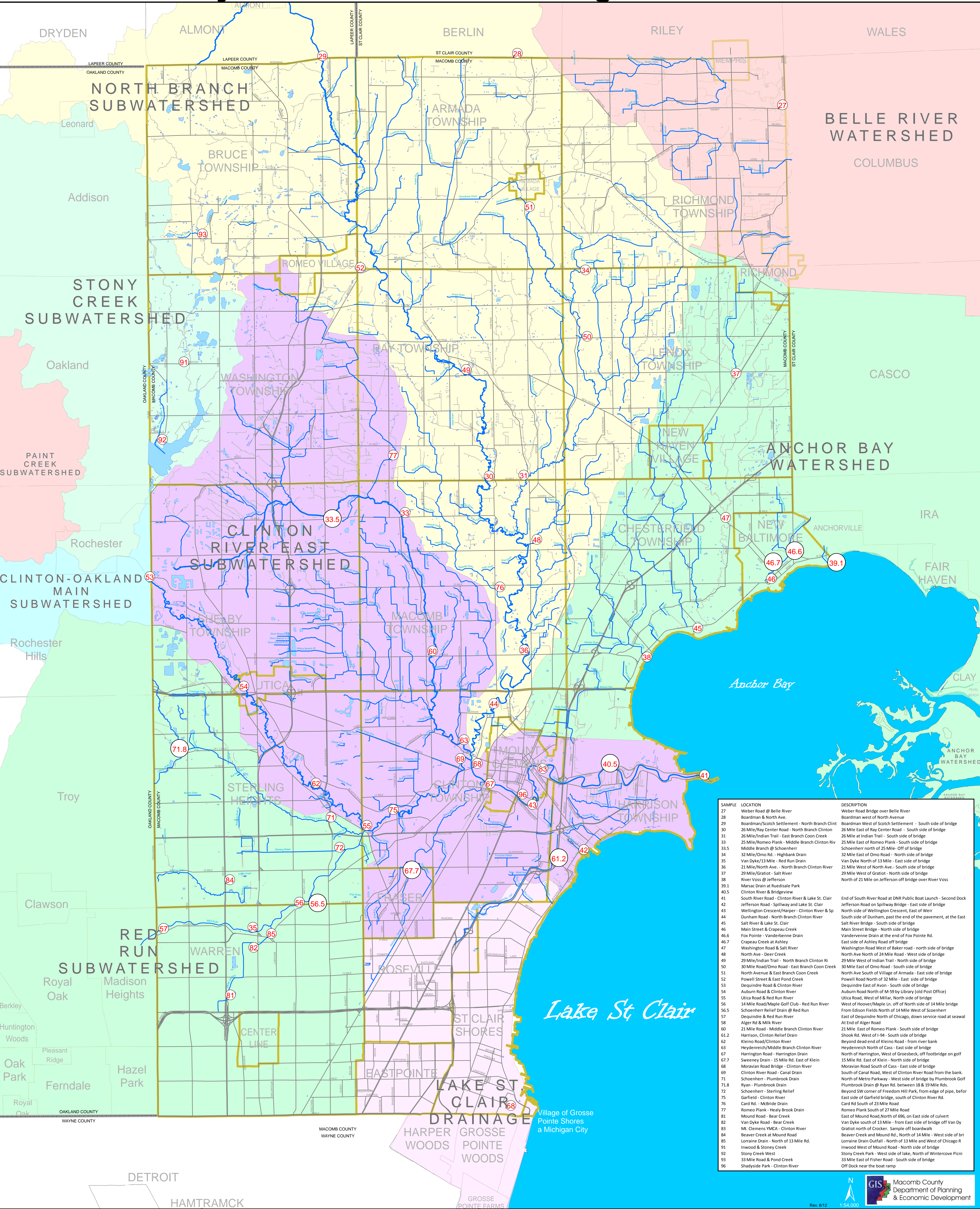


# Macomb County Surface Water Monitoring Sites



SAMPLE	LOCATION	DESCRIPTION
27	Weber Road @ Belle River	Weber Road Bridge over Belle River
28	Boardman & North Ave.	Boardman west of North Avenue
29	Boardman/Scotch Settlement - North Branch Clinton	Boardman West of Scotch Settlement - South side of bridge
30	26 Mile/Ray Center Road - North Branch Clinton	26 Mile East of Ray Center Road - South side of bridge
31	26 Mile/Indian Trail - East Branch Coon Creek	26 Mile at Indian Trail - South side of bridge
33	25 Mile/Romeo Plank - Middle Branch Clinton Riv	25 Mile East of Romeo Plank - South side of bridge
33.5	Middle Branch @ Schoenherr	Schoenherr north of 25 Mile - Off of bridge
34	32 Mile/Omo Rd. - Highbank Drain	32 Mile East of Omo Road - North side of bridge
35	Van Dyke/13 Mile - Red Run Drain	Van Dyke North of 13 Mile - East side of bridge
36	21 Mile/North Ave. - North Branch Clinton River	21 Mile West of North Ave. - South side of bridge
37	29 Mile/Gratiot - Salt River	29 Mile West of Gratiot - North side of bridge
38	River Voss @ Jefferson	North of 21 Mile on Jefferson off bridge over River Voss
39.1	Marsac Drain at Ruedsale Park	
40.5	Clinton River & Bridgeview	
41	South River Road - Clinton River & Lake St. Clair	End of South River Road at DNR Public Boat Launch - Second Dock
42	Jefferson Road - Spillway and Lake St. Clair	Jefferson Road on Spillway Bridge - East side of bridge
43	Wellington Crescent/Harper - Clinton River & Sp	North side of Wellington Crescent, East of Weir
44	Dunham Road - North Branch Clinton River	South side of Dunham, past the end of the pavement, at the East
45	Salt River/Lake St. Clair	30 Mile East of Omo Road - South side of bridge
46	Main Street & Crapeau Creek	Main Street Bridge - North side of bridge
46.6	Fox Pointe - Vanderbenne Drain	Vanderbenne Drain at the end of Fox Pointe Rd.
46.7	Crapeau Creek at Ashley	East side of Ashley Road off bridge
47	Washington Road & Salt River	Washington Road West of Baker road - north side of bridge
48	North Ave - Deer Creek	North Ave North of 24 Mile Road - West side of bridge
49	29 Mile/Indian Trail - North Branch Clinton Ri	29 Mile West of Indian Trail - North side of bridge
50	30 Mile Road/Omo Road - East Branch Coon Creek	30 Mile East of Omo Road - South side of bridge
51	North Avenue & East Branch Coon Creek	North Ave South of Village of Armada - East side of bridge
52	Powell Street & East Pond Creek	Powell Road North of 32 Mile - East side of bridge
53	Dequindre Road & Clinton River	Dequindre East of Avon - South side of bridge
54	Auburn Road & Clinton River	Auburn Road North of M-59 by Library (old Post Office)
55	Utica Road & Red Run River	Utica Road, West of Millar, North side of bridge
56	34 Mile Road/Maple Golf Club - Red Run River	West of Hoover/Maple Ln. off of North side of 14 Mile bridge
56.5	Schoenherr Relief Drain @ Red Run	From Edson Fields North of 14 Mile West of Schoenherr
57	Dequindre & Red Run River	East of Dequindre North of Chicago, down service road at seawall
58	Alger Rd & Milk River	At End of Alger Road
60	21 Mile Road - Middle Branch Clinton River	21 Mile Road - South side of bridge
61.2	Harrison, Clinton Relief Drain	Shook Rd. West of I-94 - South side of bridge
62	Kleino Road - Clinton River	Beyond dead end of Kleino Road - from river bank
63	Heydenreich/Middle Branch Clinton River	Heydenreich North of Cass - East side of bridge
67	Harrington Road - Harrington Drain	North of Harrington, West of Groesbeck, off footbridge on golf
67.7	Sweeney Drain - 15 Mile Rd. East of Klein	15 Mile Rd. East of Klein - North side of bridge
68	Moravian Road Bridge - Clinton River	Moravian Road South of Cass - East side of bridge
69	Clinton River Road - Canal Drain	South of Canal Road, West of Clinton River Road from the bank.
71	Schoenherr - Plumbrook Drain	North of Metro Parkway - West side of bridge by Plumbrook Golf
71.8	Ryan - Plumbrook Drain	Plumbrook Drain @ Ryan Rd. between 18 & 19 Mile Rds.
72	Schoenherr - Sterling Relief	Beyond SW corner of Freedom Hill Park, from edge of pipe, before
75	Garfield - Clinton River	East side of Garfield bridge, south of Clinton River Rd.
76	Card Rd. - McBridge Drain	Card Rd South of 23 Mile Road
77	Romeo Plank - Healy Brook Drain	Romeo Plank South of 27 Mile Road
81	Mound Road - Bear Creek	East of Mound Road North of 696, on East side of culvert
82	Van Dyke Road - Bear Creek	Van Dyke south of 13 Mile - from East side of bridge off Van Dy
83	Mt. Clemens YMCA - Clinton River	Gratiot north of Crocker - Sample off boardwalk
84	Beaver Creek at Mound Road	Beaver Creek and Mound Rd., North of 14 Mile - West side of bri
85	Lorraine Drain - North of 13 Mile Rd.	Lorraine Drain Outfall - North of 13 Mile and West of Chicago R
91	Inwood & Stony Creek	Inwood West of Mound Road - North side of bridge
92	Stony Creek West	Stony Creek Park - West side of lake, North of Wintercove Picni
93	33 Mile Road & Pond Creek	33 Mile East of Fisher Road - South side of bridge
96	Shadyside Park - Clinton River	Off Dock near the boat ramp