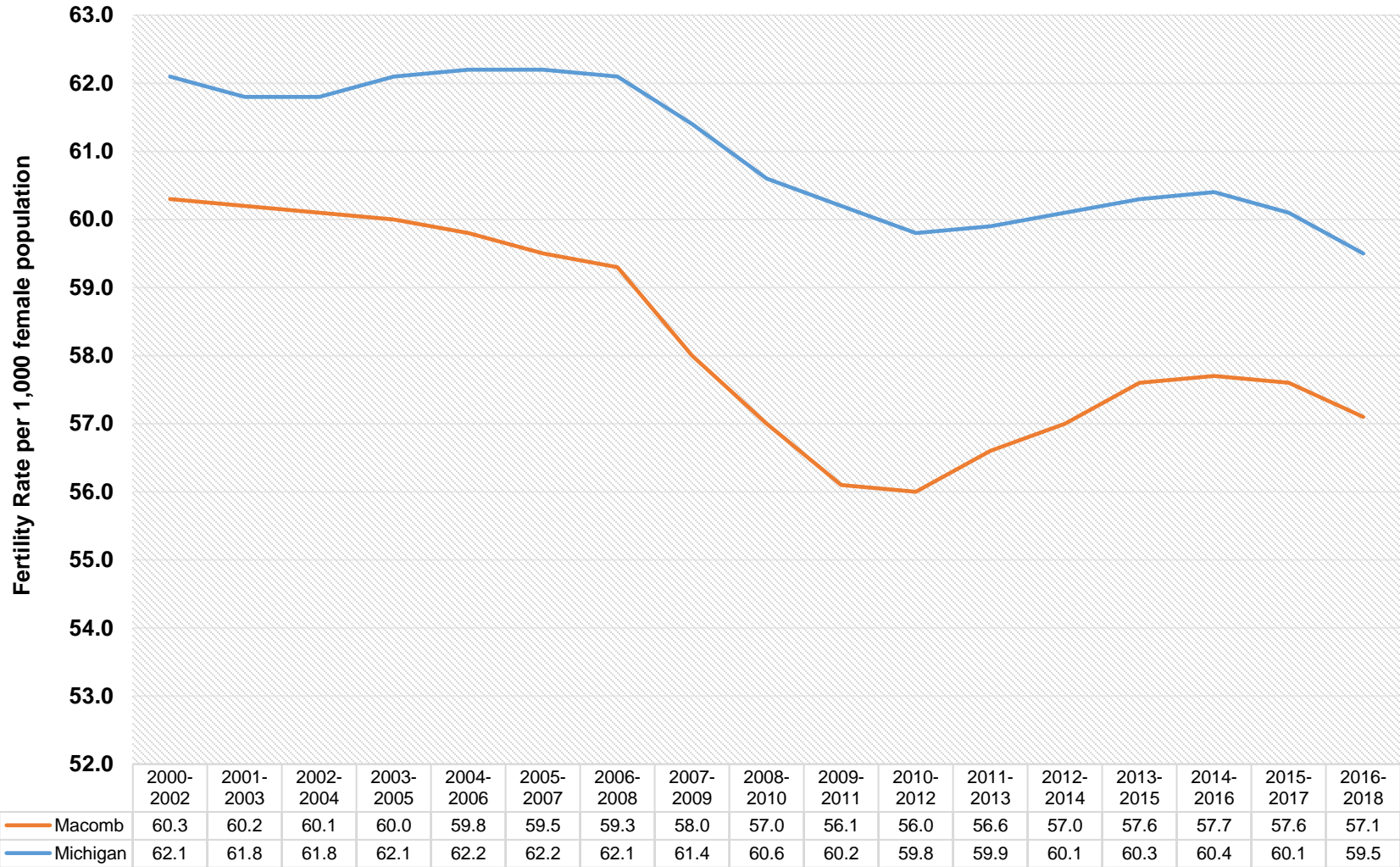


Fertility Rates in Macomb County and Michigan by Three-Year Moving Averages (2000 -2018)

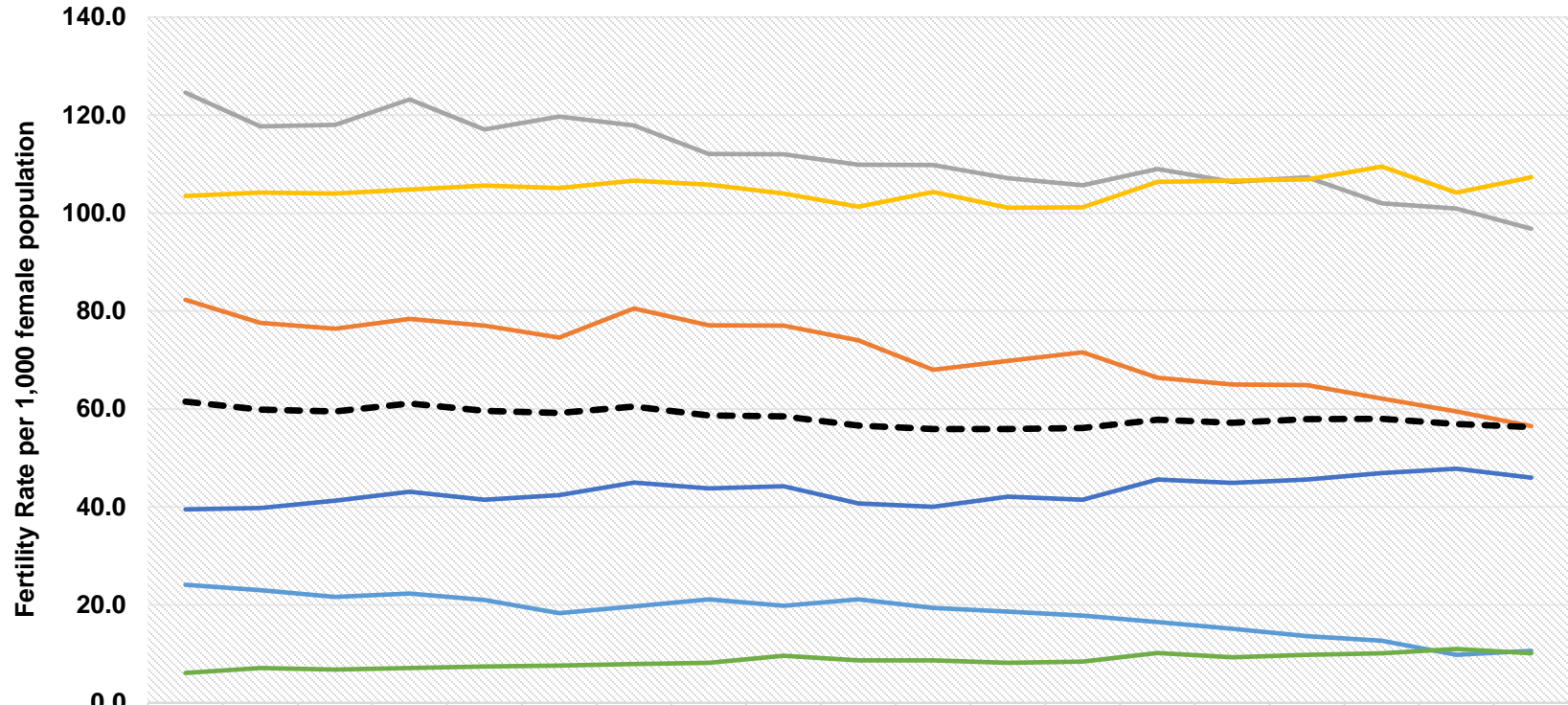


Note: The fertility rate is the number of resident live births to women ages 15-44 years old per 1,000 female population.

Source: Division for Vital Records & Health Statistics, Michigan Department of Health & Human Services

Updated: November 2019

Fertility Rates by Year and Age of Mother in Macomb County, MI (2000 - 2018)



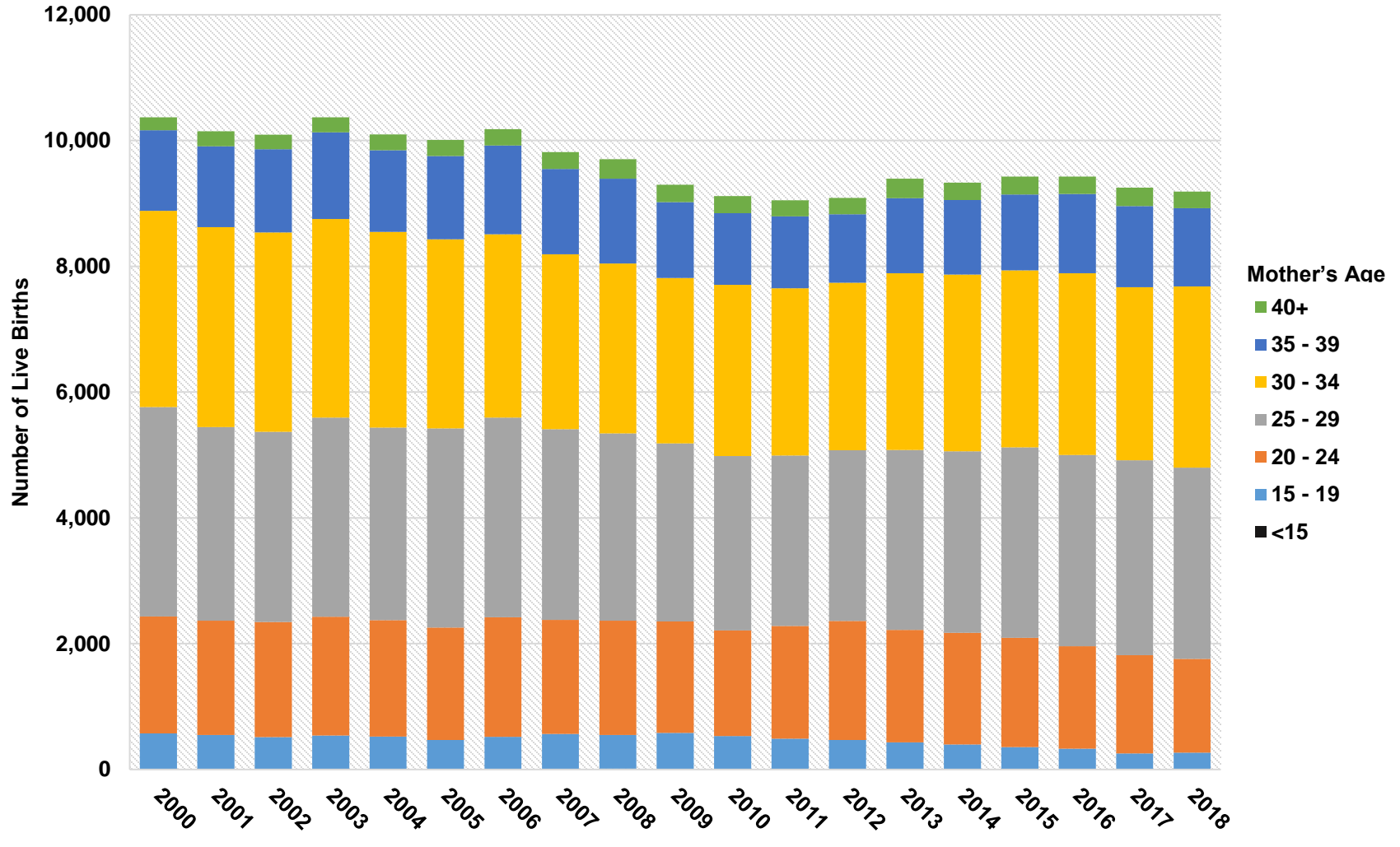
	2000	2001	2002	2003	2004	2005	2006	2007	2008	2009	2010	2011	2012	2013	2014	2015	2016	2017	2018
15 – 19	24.1	23.0	21.6	22.3	21.0	18.3	19.7	21.1	19.8	21.1	19.4	18.6	17.8	16.5	15.1	13.6	12.7	9.8	10.6
20 – 24	82.3	77.6	76.4	78.4	77.0	74.6	80.5	77.1	77.0	74.0	68.0	69.8	71.6	66.4	65.0	64.9	62.1	59.5	56.5
25 – 29	124.6	117.7	118.0	123.2	117.1	119.7	117.9	112.1	112.0	109.9	109.8	107.1	105.7	109.0	106.4	107.3	102.0	100.9	96.8
30 – 34	103.5	104.2	104.0	104.8	105.6	105.1	106.6	105.8	104.0	101.3	104.3	101.1	101.2	106.4	106.6	106.9	109.5	104.2	107.3
35 – 39	39.5	39.8	41.3	43.1	41.5	42.4	45.0	43.8	44.2	40.7	40.0	42.1	41.5	45.6	44.9	45.6	46.9	47.8	46.0
40+	6.1	7.1	6.8	7.1	7.4	7.6	7.9	8.2	9.6	8.7	8.7	8.2	8.4	10.2	9.3	9.8	10.1	11.0	10.1
All Ages	61.5	59.9	59.5	61.1	59.6	59.2	60.5	58.7	58.5	56.6	55.9	55.9	56.1	57.8	57.2	57.9	58.0	56.9	56.3

Note: The age-specific fertility rate is the number of resident live births to women of a specific age group per 1,000 female population of that specific age group. Rate for ages under 20 is based on live births to women under 20 and population of females 15-19. Rate for ages 40 or over is based on live births to women 40 and over and population of females 40-44.

Source: Division for Vital Records & Health Statistics, Michigan Department of Health & Human Services

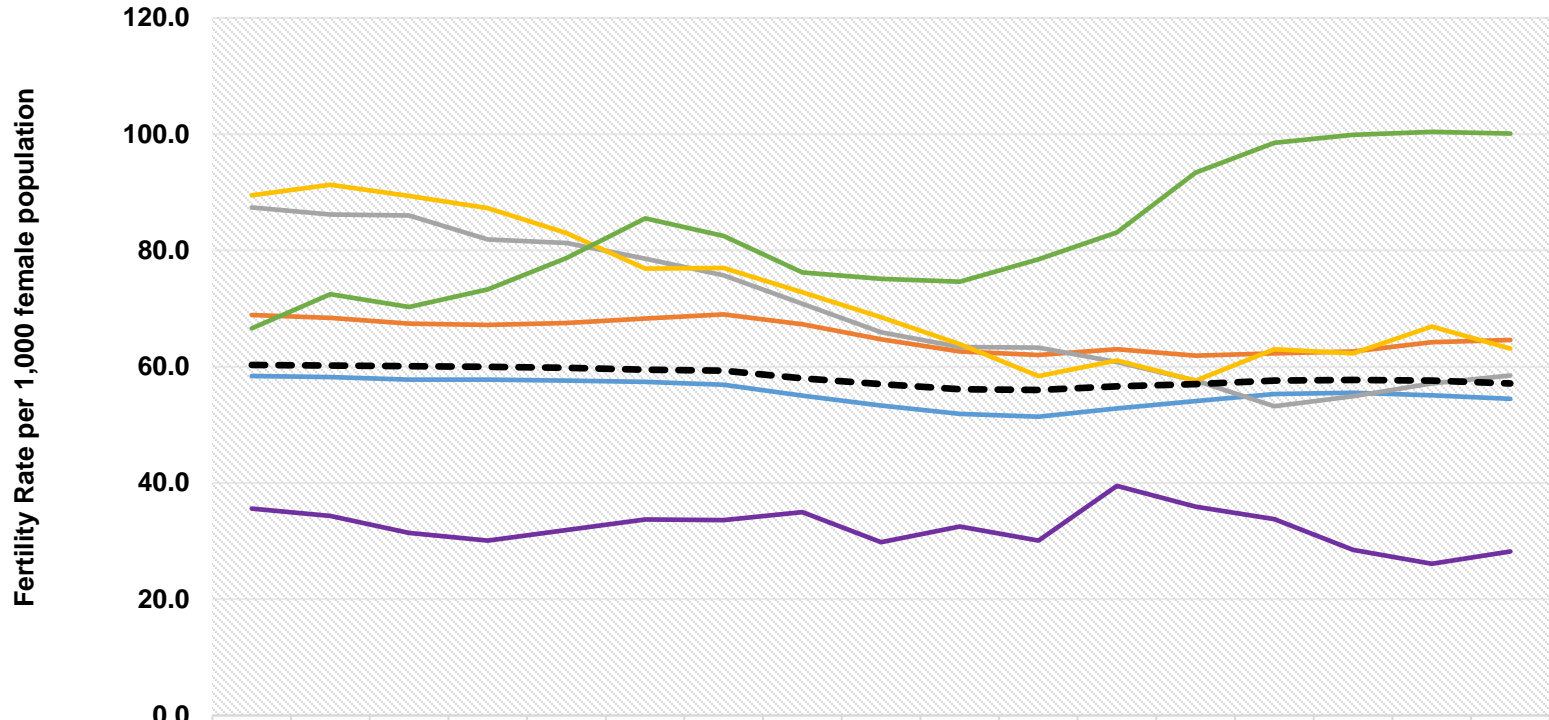
Updated: November 2019

Live Births by Year and Mother's Age in Macomb County, MI (2000 - 2018)



Source: Division for Vital Records & Health Statistics, Michigan Department of Health & Human Services
 Updated: November 2019

**Fertility Rates in Macomb County, MI by Three-Year Moving Averages
and Mother's Race & Ethnicity (2000 - 2018)**



	2000-2002	2001-2003	2002-2004	2003-2005	2004-2006	2005-2007	2006-2008	2007-2009	2008-2010	2009-2011	2010-2012	2011-2013	2012-2014	2013-2015	2014-2016	2015-2017	2016-2018
White	58.4	58.2	57.8	57.8	57.6	57.4	56.9	55.0	53.3	51.9	51.4	52.8	54.1	55.3	55.5	55.1	54.5
Black	68.9	68.4	67.4	67.2	67.5	68.3	69.0	67.3	64.7	62.6	62.0	63.0	61.9	62.3	62.6	64.2	64.6
American Indian	35.6	34.3	31.4	30.1	31.9	33.7	33.6	35.0	29.8	32.5	30.1	39.5	35.9	33.8	28.5	26.1	28.2
Asian & Pacific Islander	87.4	86.2	86.0	81.9	81.3	78.6	75.7	70.8	65.9	63.4	63.3	60.8	57.6	53.2	54.9	57.1	58.5
Hispanic Ethnicity	89.5	91.3	89.4	87.3	83.0	76.9	77.0	72.8	68.5	63.9	58.4	61.1	57.6	63.0	62.3	66.9	63.1
Arab Ethnicity	66.6	72.5	70.3	73.3	78.7	85.5	82.5	76.2	75.1	74.6	78.5	83.1	93.4	98.5	99.9	100.4	100.1
All Races & Ethnicities	60.3	60.2	60.1	60.0	59.8	59.5	59.3	58.0	57.0	56.1	56.0	56.6	57.0	57.6	57.7	57.6	57.1

Note: The race- and ethnicity-specific fertility rate is the number of resident live births to women ages 15-44 years old of a specific racial/ethnic group group per 1,000 female population of that specified group.

Source: Division for Vital Records & Health Statistics, Michigan Department of Health & Human Services

Updated: November 2019