



**Concentra Medical Center
AUTHORIZATION FOR TREATMENT AND BILLING
Worker's Compensation Injuries or Exposure**

Company: Macomb County - Injury Telephone #: (586) 469-5280 Fax #: (586) 469-6974
 Address: 1 S Main St., 6th Floor Mt. Clemens MI 48043
Street City State Zip

Work Comp Carrier: Comprehensive Risk Services Telephone #: (800)737-9875 Fax #: (248)344-8560
 Address: P.O. Box 505 Novi MI 48376 Policy Number: WCX 002856
Street City State Zip

Designated Employer Rep: See Employer Notes Telephone #: (586) 469-5280 Fax #: (586) 469-6974

Employee: _____ SS#: _____ DOB: _____
 Department _____

Authorization for:
 BBP Exposure - OR - Care of Injury **AND** Brief Description _____

Authorization by: _____ Position or Title: _____
 Date: _____ (the authorizing individual may be contacted for additional information regarding the incident)

CONSENT TO TREAT AND AUTHORIZATION TO RELEASE INFORMATION
 I hereby give consent to Concentra Medical Center and the attending physician for examination and treatment and authorize release of information pertaining to this specific or physical examination to my employer or employer's insurer.

EMPLOYEE SIGNATURE: _____ **DATE:** _____

Telemedicine at the Center level

The following phone numbers allow you immediate access to the Concentra colleagues who will schedule your "walk-in" virtual visit with our clinician in the clinic. These visits might include treatment of your initial injury or your recheck.

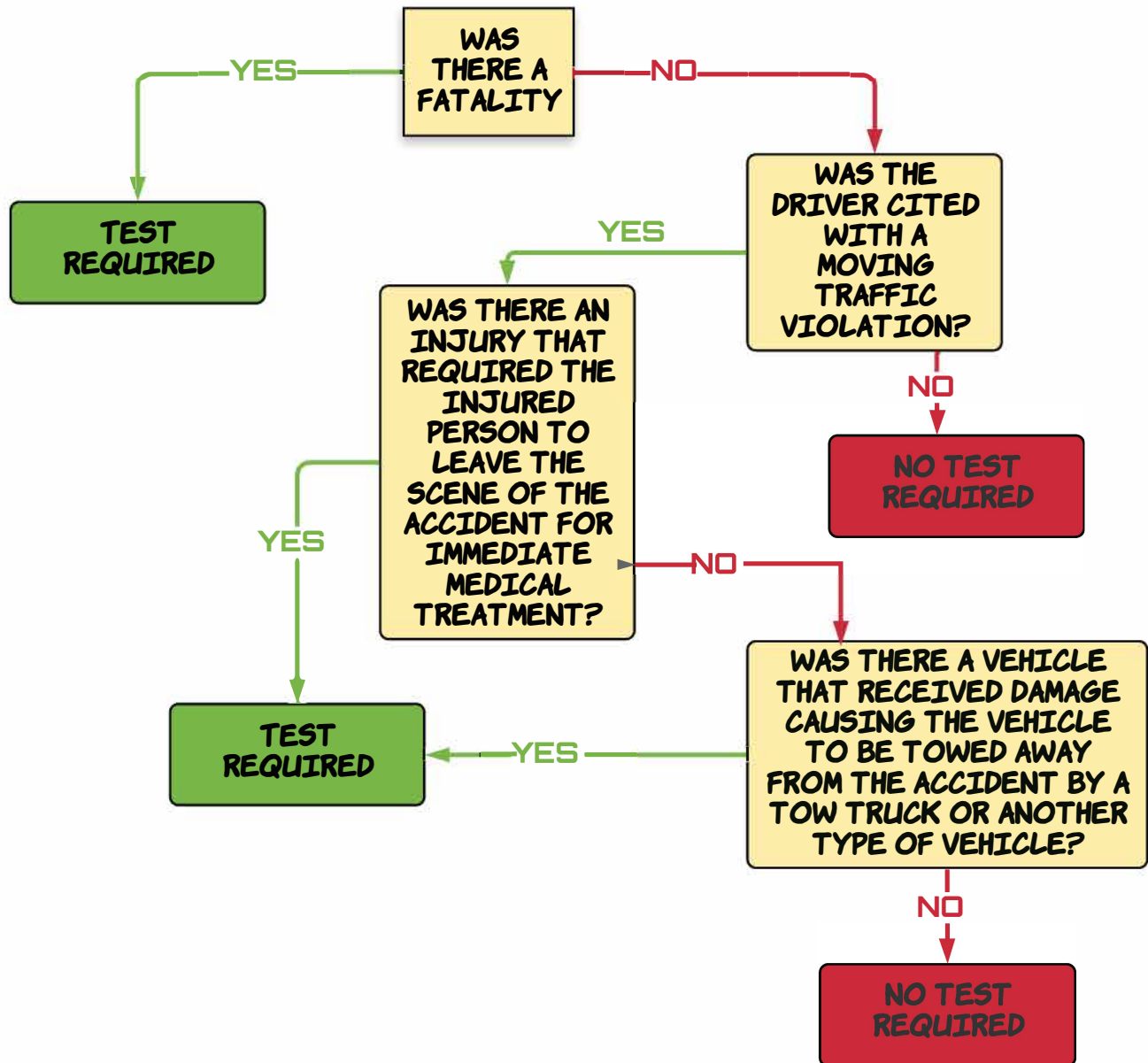
IMPORTANT: If this is your initial visit, please make sure you or your supervisor email your authorization for treatment to the appropriate location before you check in for "walk in" virtual visit.

- **Chesterfield (586) 949-6336**
chesterfield@concentra.com
- **Fraser (586) 296-2800**
fraser@concentra.com
- **Sterling Heights (586) 977-1510**
sterlingheights@concentra.com
- **Warren (586) 582-0018**
warren@concentra.com
- *For after-hours care and appointments – call us at our Airport location*
(734) 955-7000 airportromulus@concentra.com

POST-ACCIDENT DECISION TREE

FOR EMPLOYEES WITH COMMERCIAL DRIVER'S LICENSE

(CDL'S)





How to Use Concentra Telemed

➤ **Questions?**
Call 1.855.835.6337.

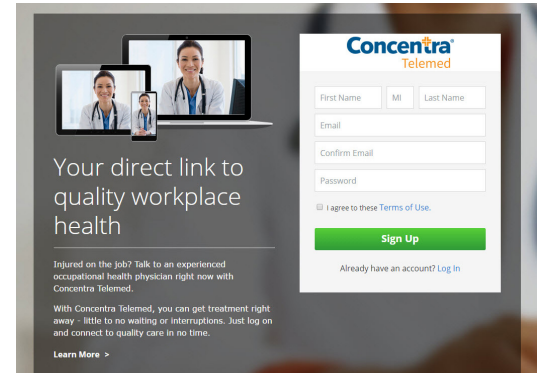
Employee Instructions - Sign Up

After informing your supervisor or safety personnel of your work-related injury, and receiving clearance to obtain care via telemedicine, you are ready to start your visit with Concentra Telemed™. There are two ways you can access Concentra Telemed, using your web browser on your computer or with the Concentra Telemed app on Android and iPhone.

How to Access ConcentraTelemed.com

You'll need a computer with a webcam and microphone. You can't access ConcentraTelemed.com using a tablet or smartphone.

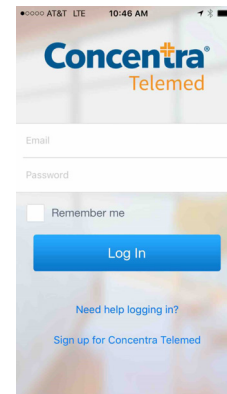
1. Make sure you have your photo ID ready.
2. Go to your computer.
3. Open your web browser and go to ConcentraTelemed.com.
4. Sign up or log in. You'll need to use your email address.
5. Once signed into the system, please click on an available care coordinator to start the visit.



How to Use the Concentra Telemed App

To use the app, you'll need a smartphone with a camera.

1. Make sure you have your driver's license or state ID ready.
2. Go to the Apple app store or Google Play app. Search for "Concentra Telemed" and download the Concentra Telemed app.
3. Open the app.
4. Sign up or log in. You'll need to use your email address.
5. Once signed into the system, please click on an available care coordinator to start the visit.



*Please note:
The Concentra Telemed platform and Concentra Telemed app are exclusively for employers who have established telemedicine accounts with Concentra for their employees.*

Your Visit

After you've signed up:

1. Select the option to start a visit with an available care coordinator. Depending on their availability, you may be added to a virtual "waiting room" while you wait for them to connect.
2. The care coordinator will ask you some questions about your medical history and why you're visiting.
3. You'll be queued in a virtual waiting room to see a doctor. If you need to step away, remember to click the box that says **TEXT ME** so that you'll be reminded when the clinician is ready.
4. Time for your appointment! Talk to the clinician as much as you need to.
5. When you're done, you'll check out with your care coordinator. They'll help you get scheduled for another visit if you need it.

Need help? Having technical issues?

Call us at 1.855.835.6337.

Injury care when and where you need it.

Tired of the waiting room?
Can't find time for the doctor?

With Concentra Telemed, you can use your computer or smartphone to see a clinician right away—minimal waiting, no interruptions. Within minutes of signing up, you'll connect with a clinician who can help you get better, faster. Using video conferencing, they'll diagnose, recommend treatment, and even prescribe medication if you need it.* It's health care that works for you when you need it, where you need it.

What we treat

Concentra Telemed can treat a lot of the things you normally visit a medical center for, such as:

- Minor functional movement injuries
- Bruises
- Scrapes
- Sprains and strains
- Rashes and burns
- Repetitive use injuries
- Contusions
- Bloodborne pathogen (BBP) exposures

Concentra Telemed is primarily designed to provide immediate attention for minor medical issues. Serious injuries—or injuries that need hands-on care, like stitches—will still need to be seen in person by a clinician. Depending upon the severity of your injury, your clinician may refer you to the closest Concentra medical center or emergency room for further treatment.



How you benefit

Talk to a clinician right when you need to. With Concentra Telemed, you can see your clinician when it's easiest for you—at work, at home, or on the go. And with extended availability—seven days a week—chances are we're here when you need us.

Get treatment right away—minimal waiting, no interruptions. Instead of waiting in a waiting room, you can do whatever you need to while you're waiting for a clinician. When they're ready, you'll get a text and you can see them immediately. It's that easy.

Relax—you're in good hands. Concentra Telemed clinicians are trained in workforce health, so they understand the workers' compensation system. You don't have to worry that they'll know how to handle a work injury—instead, you can focus on getting better.

Know your privacy is our priority. Concentra Telemed uses advanced security software to protect your information and ensure your privacy, and your visit is not recorded.

*Where allowed by applicable law.



Call us anytime.

*Important numbers you'll want to know for
Telemed™ Concentra.*

Telemedicine at the Center level

The following phone numbers allow you immediate access to the Concentra colleagues who will schedule your "walk-in" virtual visit with our clinician in the clinic. These visits might include treatment of your initial injury or your recheck.

IMPORTANT: If this is your initial visit, please make sure you or your supervisor email your authorization for treatment to the appropriate location before you check in for "walk in" virtual visit.

- Chesterfield **(586) 949-6336**
chesterfield@concentra.com
- Fraser **(586) 296-2800**
fraser@concentra.com
- Sterling Heights **(586) 977-1510**
sterlingheights@concentra.com
- Warren **(586) 582-0018**
warren@concentra.com
- *For after-hours care and appointments – call us at our Airport location*
(734) 955-7000 *airportromulus@concentra.com*

