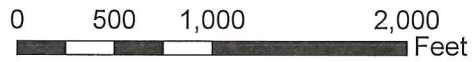
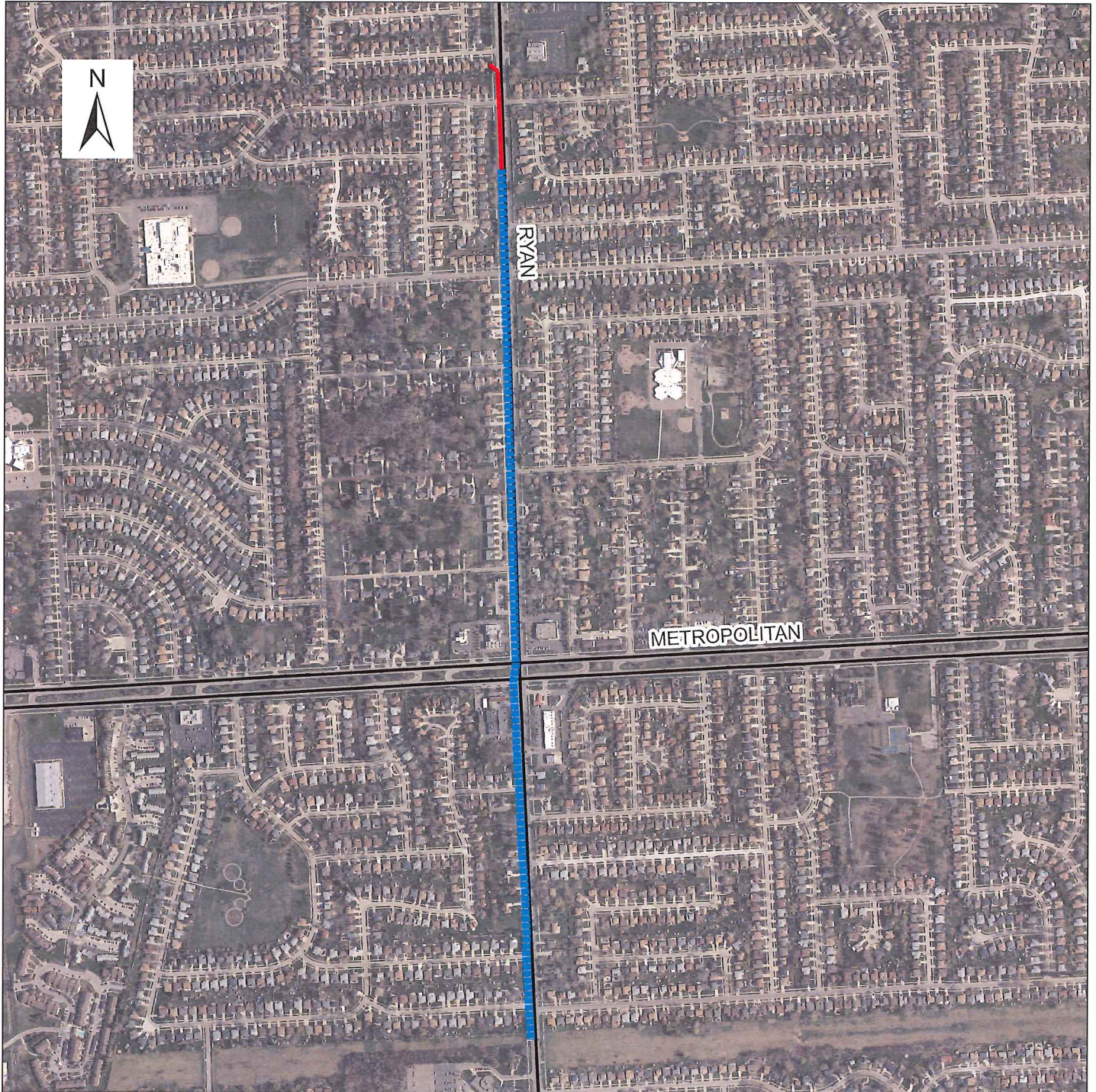


Miller
Santo
Mijac

CADY ENCLOSURE DRAIN
INTRA-COUNTY DRAINAGE BOARD
SEPTEMBER 11, 2017
10:45 A.M.
AGENDA

	Page
1. Call of meeting to order and roll call	
2. Approval of Agenda for September 11, 2017	
3. Approval of Minutes for August 7, 2017	3
4. Public participation	
5. Consideration for approval for Spalding DeDecker to conduct a pipeline and manhole inspection and condition assessment at a cost not to exceed \$7,200.00	5
6. Financial Report – Bruce Manning	10
7. Adjourn	

CADY ENCLOSURE



Drain Length (Feet/Miles):
6,558.97 / 1.24

Legend

- | Enclosed Gravity | Open Channel |
|------------------|--------------|
| < 60" Dia | Ditch |
| \geq 60" Dia | Pond |
| Culvert | |

An adjourned meeting of the Intra-County Drainage Board for the **CADY ENCLOSURE DRAIN** was held in the Office of the Macomb County Public Works Commissioner, 21777 Dunham, Clinton Township, Michigan, on August 7, 2017, at 10:48 A.M.

PRESENT: Candice S. Miller, Chair
Bryan Santo, Member
Robert Mijac, Member

ALSO PRESENT: Brian Baker, Chief Deputy, Karen Czernel, Deputy, Keith Graboske, P.E., Chief Engineer, Vincent Astorino, Engineer II, Evans Bantios, Engineer II, Dan Heaton, Public Relations Manager, Anthony Forlini, Operations Manager, Bruce Manning, Financial Manager, Thomas Stockel, Construction Engineer, Barbara Delecke, Administrative Services, Macomb County Public Works; Don Coddington, Chesterfield Township; Jared Beaudoin, City of Sterling Heights; David Richmond, P.E., Spalding DeDecker Associates

The meeting was called to order by the Chair, Candice Miller. The agenda was approved as presented.

The meeting was opened to public participation, then closed, there being no comments from the public.

In reviewing the different drainage district accounts, funds were found from left-over bond monies, as-built monies, etc. There is \$124,534.00 available in this account for operation and maintenance items. Spalding DeDecker Associates (SDA) was asked to prepare a scope of service for the Cady Enclosure Drain. Any pipe that is 60 inches or larger will be walked, smaller pipes will be CCTV'd and manholes inspected. A report will be provided with SDA's findings.

A motion was made to hire Spalding DeDecker Associates, with a not to exceed amount of \$12,980.00, to inspect the Cady Enclosure Drain and provide a report of same by Mr. Santo, supported by Mr. Mijac.

Ayes: Santo, Mijac, Miller
Nays: None

Motion approved.

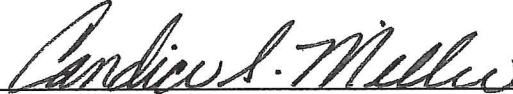
The financial report given by Mr. Manning was received and filed as submitted.

The meeting was adjourned at 10:57 a.m. on a motion by Mr. Santo, seconded by Mr. Mijac, and unanimously approved.


Candice S. Miller, Chair
Macomb County Public Works Commissioner

STATE OF MICHIGAN
COUNTY OF MACOMB

I certify that the foregoing is a true and correct copy of proceedings taken by the Intra-County Drainage Board for the Drainage District shown on the attached set of minutes, on August 7, 2017, the original of which is on file in the Public Works Commissioner's Office. Public notice of the meeting was given pursuant to Act No. 267, Public Acts of Michigan, 1975, including, in the case of a special or rescheduled meeting or a meeting secured for more than 36 hours, notice by posting at least 18 hours prior to the time set for the meeting.



Candice S. Miller, Chair
Macomb County Public Works Commissioner

DATED: 8/8/17

8845.bd



SPALDING DEDECKER

Engineering & Surveying Excellence since 1954

August 5, 2017

Ms. Candice Miller
Public Works Commissioner
Macomb County Office of Public Works
21777 Dunham Road
Clinton Township, MI 48036

Re: Proposal for Drain Inspections
City of Sterling Heights
SDA Proposal No. PR17-218

Dear Ms. Miller:

Thank You for your request for proposal to add Pipeline Assessment Certification Program and Manhole Assessment Certification Program (PACP/MACP) inspections to the eight drains that we have recently quoted to inspect for sediment accumulation. The eight drains are under the jurisdiction of Macomb County Public Works and are located within the City of Sterling Heights. The drains included in this request are:

- Busch Drain
- Cady Drain
- Dienner Drain
- Greene Drain
- Merrill Drain
- Gamble Drain
- Kleino Relief Enclosure
- Kleino – Canal Branch

The total length of the eight drains is approximately 68,400 linear feet. The purpose of the additional scope of work is to provide PACP/MACP condition assessment of the drains for input into the County's sewer database. Spalding DeDecker (SD) is pleased to submit the following proposal for providing the drain inspections engineering services.

Scope of Services (In addition to previously quoted work)

1. Drain Pipes 60" in Diameter and Larger.
 - a. Enter and walk the pipes at each drain and provide condition assessment in accordance with National Association of Sewer Service Companies (NASSCO) PACP/MACP guidelines.
 - b. Provide standard inspection sheets for the drains walked and the structures.
 - c. Field personnel will take still photos and a video of the pipe segments walked.
 - d. Provide traffic control as needed to safely access the drains.
 - e. Obtain permits as needed from Road Commission to access the drains.
2. Drain Pipes Less than 60" in diameter.
 - a. Enter manholes and MACP assessment for the structure.
 - b. Pipes will not be entered as per discussion with County staff.

- c. This proposal does not include video inspection of the smaller diameter pipes. Should video inspection be requested at a later date, SD can provide a fee for that service.

The field inspectors will walk as much of the drain as is safe to do so, but might not be able to walk the entire drain due to safety concerns or the accumulation of sediment. SD will use a four person sewer crew and a crew leader (confined space specialist) while entering and walking the larger drains. Budgets are based on being able to walk a minimum of 5,000 feet of pipe in an 8 hour day. SD will utilize a three person sewer crew and crew leader to investigate the smaller pipes from the manholes. SD Operation & Maintenance personnel are trained in Confined Space Entry and Tunnel Rescue. SD personnel use our Sewer Monitoring Vehicles (SMV) which are equipped with the latest in technology for gas monitoring, safety equipment, lighting for above & below ground, tools and equipment necessary to perform the internal inspection.

At the conclusion of our inspection of each drain, a report will be developed. The report will include our findings and recommendations.

SD will perform the Additional Scope of Services on an hourly basis in accordance with the attached rate and fee schedule based on the following budgets. These fees assume SD is performing the condition assessments in conjunction with the inspection work for accumulated sediment.

Busch Drain Inspection

TASK	Budget
1. PACP/MACP Assessment	\$5,500.00

Cady Drain Inspection

TASK	Budget
1. PACP/MACP Assessment	\$7,200.00

Dienner Drain Inspection

TASK	Budget
1. PACP/MACP Assessment	\$7,500.00

Greene Drain Inspection

TASK	Budget
1. PACP/MACP Assessment	\$9,000.00

Merrill Drain Inspection

TASK	Budget
1. PACP/MACP Assessment	\$5,800.00

Gamble Drain Inspection

TASK	Budget
1. PACP/MACP Assessment	\$3,900.00

Kleino Relief Drain Enclosure Inspection

TASK	Budget
1. PACP/MACP Assessment	\$7,600.00

Kleino – Canal Branch Drain Inspection

TASK	Budget
1. PACP/MACP Assessment	\$4,000.00

PACP/MACP Additional Budget

Total \$50,500.00

Should you have any questions, please do not hesitate to contact this office. If this proposal is acceptable to you, please execute and return one (1) copy of this proposal to SDA for our records.

Sincerely,

Spalding DeDecker

Accepted by:

David E. Richmond, PE
Project Manager

Ms. Candice Miller
Public Works Commissioner

Date

cc: Keith Graboske, Chief Engineer, OMCPWC



SPALDING DEDECKER ASSOCIATES

HOURLY FEE SCHEDULE
Effective January 1, 2016

PROFESSIONAL SERVICES

Where it is agreed that fees for our services will be based upon the time worked on the project, such fees will be computed at the following Hourly Rates, for each of the following classified services.

Classification	Hourly Rate
Director	\$170.00
Senior Project Manager	\$150.00
Project Manager	\$140.00
Senior Project Engineer	\$120.00
Project Engineer	\$100.00
Graduate Engineer +	\$90.00
Senior Designer +	\$110.00
Confined Space Specialist	\$120.00
Four (4) Person Sewer Crew	\$398.00
Three (3) Person Sewer Crew	\$320.00
Sr. Project Surveyor +	\$125.00
Project Surveyor +	\$115.00
One (1) Person Survey Crew (W/ Robotic Equipment) +	\$115.00
Two (2) Person Survey Crew +	\$155.00

+ Overtime work will be charged at a rate equal to 1.3 times the indicated rate, for time worked in excess of 8 hours per day.

Enclosed Drain Work Financial Data

Drain	Current Available Funds	Approved Inspection Costs by Spalding	Spalding Proposed Certification Costs	Total Cost	Available Funds Post Work
Busch Drain	\$47,028	\$10,450	\$5,500	\$15,950	\$31,078
Cady Enclosure Drain	\$124,577	\$12,980	\$7,200	\$20,180	\$104,397
Dierner Drain Enclosure #2	\$81,885	\$13,830	\$7,500	\$21,330	\$60,555
Greene Drain Enclosure	\$163,126	\$14,020	\$9,000	\$23,020	\$140,106
Merrill Drain	\$62,820	\$15,140	\$5,800	\$20,940	\$41,880
Gamble Drain	\$43,565	\$8,930	\$3,900	\$12,830	\$30,735
Kleino Relief Enclosure	\$166,257	\$18,320	\$7,600	\$25,920	\$140,337
Kleino- Canal Branch	\$24,427	\$9,430	\$4,000	\$13,430	\$10,997

YTD Trial Balance

Fund: Cady Enclosure

As of Fiscal Period: Oct 1, 2016-Aug 31, 2017

	O&M Balance 9/30/2016	O&M	Total 8/31/2017
Cash - Operating	116,805	7,772	124,577
Accounts Receivable			0
Assets			0
Liabilities			0
Revenues		7,773	7,773
Expenditures		1	1
Equity	116,805		124,577

NOTES