

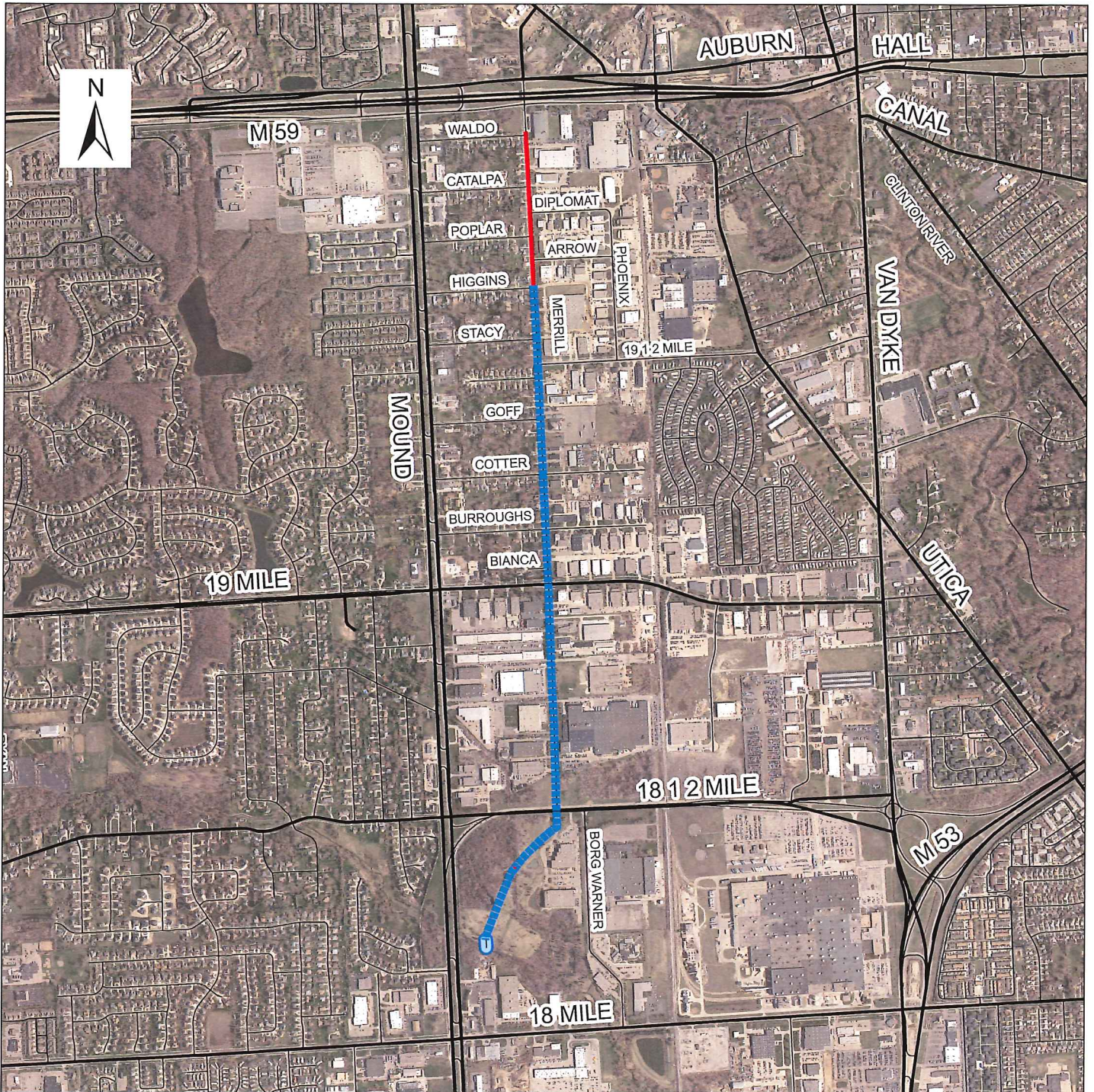
Miller
Santo
Mijac

MERRILL DRAIN
INTRA-COUNTY DRAINAGE BOARD
AUGUST 7, 2017
10:45 A.M.
AGENDA

Page

1. Call of meeting to order and roll call
2. Approval of Agenda for August 7, 2017
3. Public participation
4. Consideration for approval of Spalding DeDecker drain inspection proposal with a not to exceed amount of \$15,140.00 3
5. Financial Report – Bruce Manning 8
6. Adjourn

MERRILL DRAIN



Legend

Enclosed Gravity	Open Channel
— < 60" Dia	 Ditch
▄▄▄▄ ≥ 60" Dia	- - - - Pond

June 30, 2017

Ms. Candice Miller
Public Works Commissioner
Macomb County Office of Public Works
21777 Dunham Road
Clinton Township, MI 48036

Re: Proposal for Drain Inspections
City of Sterling Heights
SDA Proposal No. PR17-218

Dear Ms. Miller:

Thank You for your request for proposal to inspect several drains under the jurisdiction of Macomb County Public Works within the City of Sterling Heights. The drains included in this request are:

- Busch Drain
- Cady Drain
- Dienner Drain
- Greene Drain
- Merrill Drain

The total length of all five drains is approximately 46,000 linear footage. The purpose of the program is to inspect the drain to determine the amount of sediment accumulating in the drain and the need for cleaning. Spalding DeDecker (SD) is pleased to submit the following proposal for providing the drain inspections engineering services.

Scope of Services

1. Drain Pipes 60" in Diameter and Larger.
 - a. Enter and walk the pipes at each drain and inspect the drains for accumulation of sediment.
 - b. Provide measurements and estimates of accumulated sediments.
 - c. Spot check pipe condition for potential issues. If pipe condition appears to be an issue, SD will notify the County and provide a scope and fee for a condition assessment of the drain.
 - d. Field personnel will take still photos and a video of the pipe segments walked.
 - e. Provide traffic control as needed to safely access the drains.
 - f. Obtain permits as needed from Road Commission to access the drains.
2. Drain Pipes Less than 60" in diameter.
 - a. Enter manholes and visually inspect the pipes from the manhole for excessive sediment.
 - b. Pipes will not be entered as per discussion with County staff.
 - c. This proposal does not include video inspection of the smaller diameter pipes. Should video inspection be requested at a later date, SD can provide a fee for that

service.

The field inspectors will walk as much of the drain as is safe to do so, but might not be able to walk the entire drain due to safety concerns or the accumulation of sediment. SD will use a four person sewer crew and a crew leader (confined space specialist) while entering and walking the larger drains. Budgets are based on being able to walk a minimum of 5,000 feet of pipe in an 8 hour day. SD will utilize a three person sewer crew and crew leader to investigate the smaller pipes from the manholes. SD Operation & Maintenance personnel are trained in Confined Space Entry and Tunnel Rescue. SD personnel use our Sewer Monitoring Vehicles (SMV) which are equipped with the latest in technology for gas monitoring, safety equipment, lighting for above & below ground, tools and equipment necessary to perform the internal inspection.

At the conclusion of our inspection of each drain, a report will be developed. The report will include our findings and recommendations.

SD will perform the Scope of Services on an hourly basis in accordance with the attached rate and fee schedule based on the following budgets:

Busch Drain Inspection

<u>TASK</u>	<u>Budget</u>
1. Project Coordination	\$520.00
2. Drain Inspection	\$8,370.00
3. Report	\$1,560.00
Sub-Total	\$10,450.00

Cady Drain Inspection

<u>TASK</u>	<u>Budget</u>
1. Project Coordination	\$520.00
2. Drain Inspection	\$9,400.00
3. Report and Presentation	\$1,560.00
4. Traffic Control/Permit	\$1,500.00
Sub-Total	\$12,980.00

Dienner Drain Inspection

<u>TASK</u>	<u>Budget</u>
1. Project Coordination	\$520.00
2. Drain Inspection	\$9,250.00
3. Report and Presentation	\$1,560.00
4. Traffic Control/Permit	\$2,500.00
Sub-Total	\$13,830.00

Greene Drain Inspection

<u>TASK</u>	<u>Budget</u>
1. Project Coordination	\$520.00
2. Drain Inspection	\$10,440.00
3. Report and Presentation	\$1,560.00
4. Traffic Control/Permits	\$1,500.00

 **SPALDING DeDECKER**
Engineering & Surveying Excellence since 1954

Sub-Total **\$14,020.00**

Merrill Drain Inspection

<u>TASK</u>	<u>Budget</u>
1. Project Coordination	\$520.00
2. Drain Inspection	\$11,060.00
3. Report and Presentation	\$1,560.00
4. Traffic Control/Permits	\$2,000.00
Sub-Total	\$15,140.00

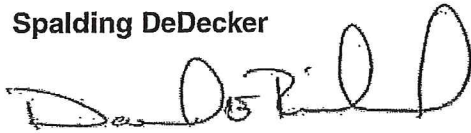
Overall Program Budget

Total **\$66,420.00**

Should you have any questions, please do not hesitate to contact this office. If this proposal is acceptable to you, please execute and return one (1) copy of this proposal to SDA for our records.

Sincerely,

Spalding DeDecker



David E. Richmond, PE
Project Manager

Accepted by:

Ms. Candice Miller
Public Works Commissioner

Date

cc: Keith Graboske, Chief Engineer, OMCPWC



Engineering & Surveying Excellence since 1954

SPALDING DEDECKER ASSOCIATES

HOURLY FEE SCHEDULE

Effective January 1, 2016

PROFESSIONAL SERVICES

Where it is agreed that fees for our services will be based upon the time worked on the project, such fees will be computed at the following Hourly Rates, for each of the following classified services.

Classification	Hourly Rate
Director	\$170.00
Senior Project Manager	\$150.00
Project Manager	\$140.00
Senior Project Engineer	\$120.00
Project Engineer	\$100.00
Graduate Engineer +	\$90.00
Senior Designer +	\$110.00
Confined Space Specialist	\$120.00
Four (4) Person Sewer Crew	\$398.00
Three (3) Person Sewer Crew	\$320.00
Sr. Project Surveyor +	\$125.00
Project Surveyor +	\$115.00
One (1) Person Survey Crew (W/ Robotic Equipment) +	\$115.00
Two (2) Person Survey Crew +	\$155.00

+ Overtime work will be charged at a rate equal to 1.3 times the indicated rate, for time worked in excess of 8 hours per day.

YTD Trial Balance

Fund: Merrill

As of Fiscal Period: Oct 1, 2016-July 31, 2017

	O&M Balance 9/30/2016	O&M	Total 7/31/2017
Cash - Operating	62,724	86	62,810
Accounts Receivable			0
Assets			0
Liabilities			0
Revenues		89	89
Expenditures		3	3
Equity	62,724		62,810