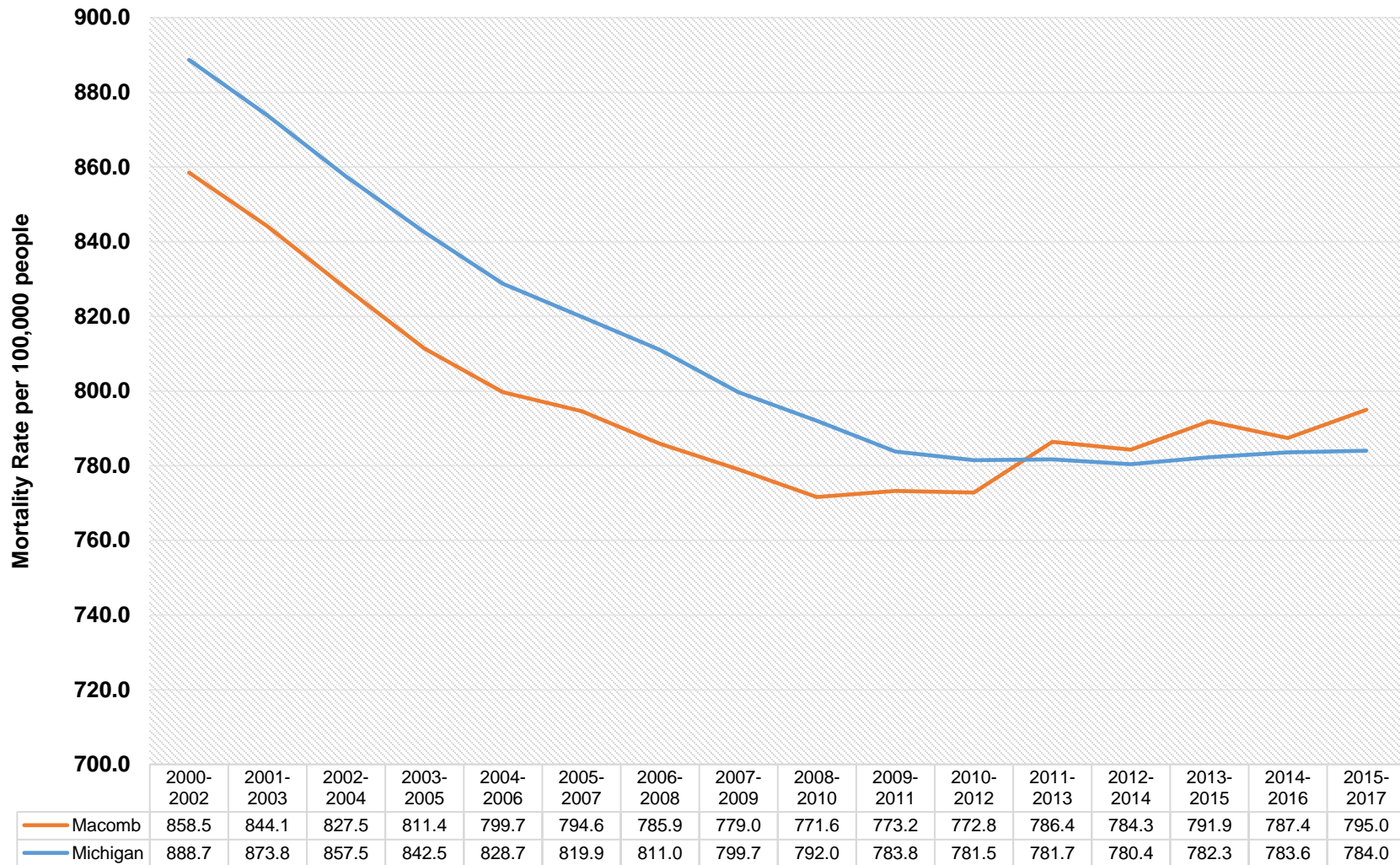


### Age-adjusted Mortality Rates in Macomb County and Michigan by Three-Year Moving Averages (2000 - 2017)

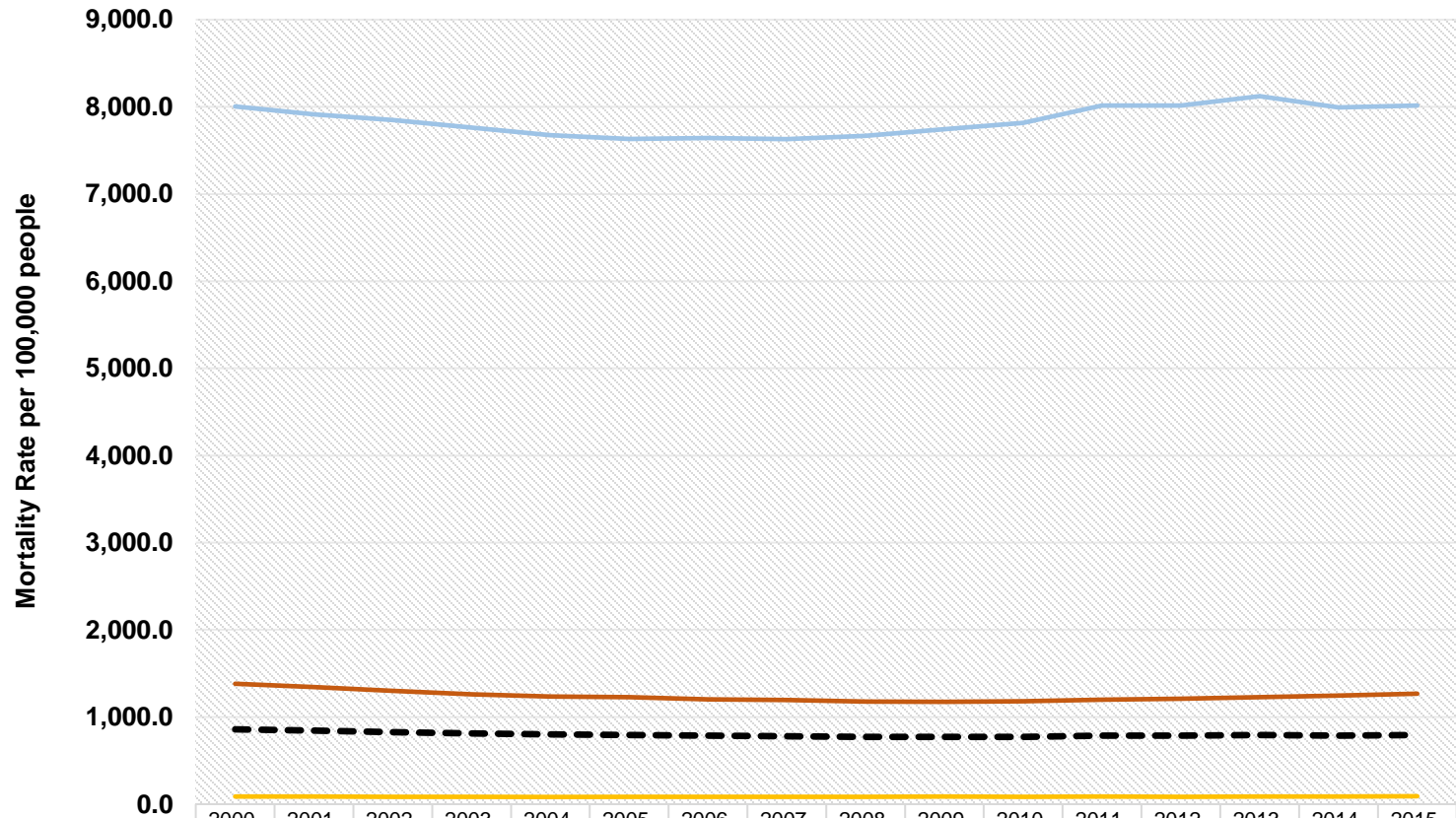


**Note:** Mortality rates are the rate of deaths per 100,000 people in the specified group.

**Source:** Division for Vital Records & Health Statistics, Michigan Department of Health & Human Services

**Updated:** November 2019

### Age-specific Mortality Rates in Macomb County, MI by Three-Year Moving Averages (2000 - 2017)



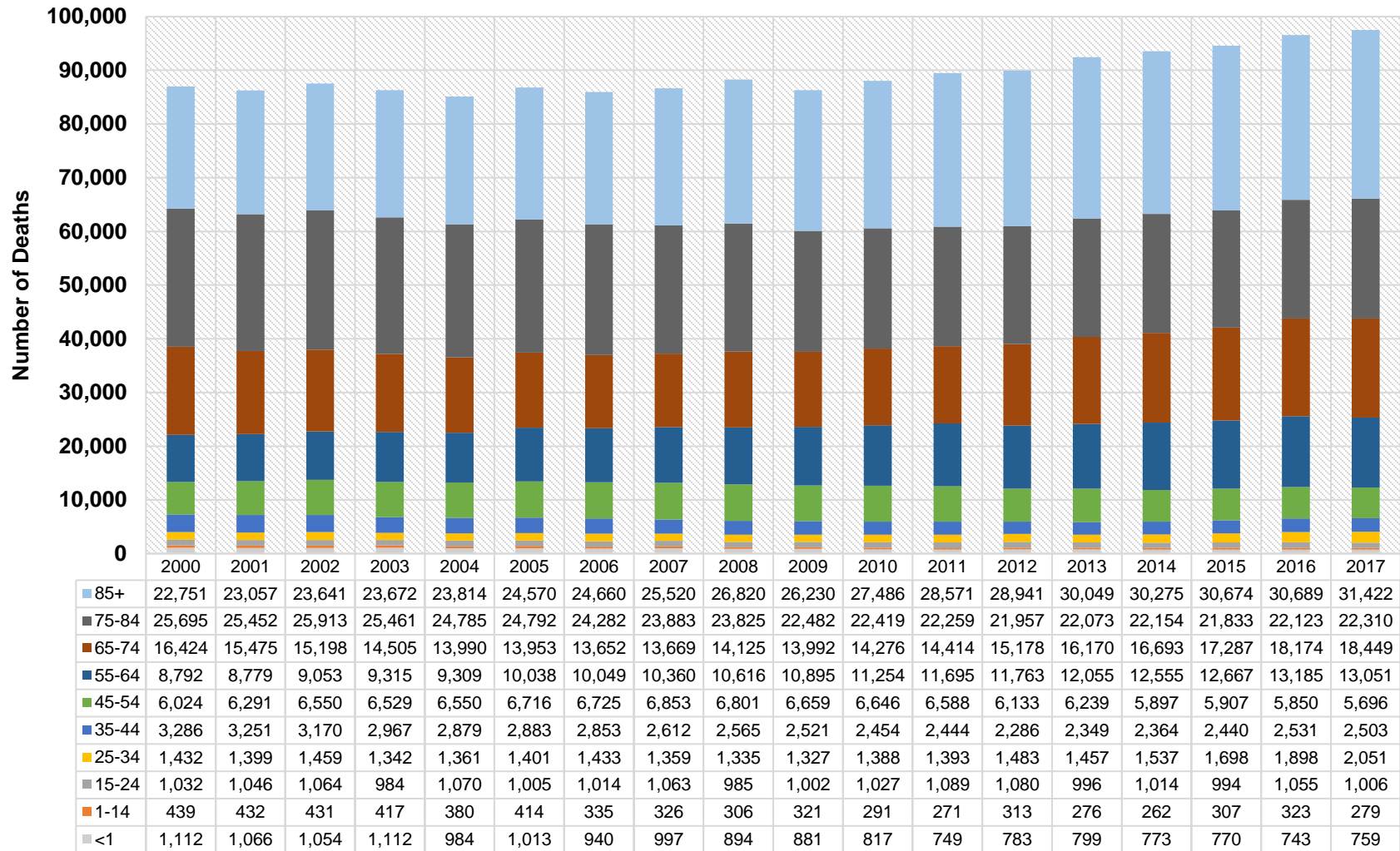
	2000-2002	2001-2003	2002-2004	2003-2005	2004-2006	2005-2007	2006-2008	2007-2009	2008-2010	2009-2011	2010-2012	2011-2013	2012-2014	2013-2015	2014-2016	2015-2017
--- All Ages Age-adjusted Rate	858.5	844.1	827.5	811.4	799.7	794.6	785.9	779.0	771.6	773.2	772.8	786.4	784.3	791.9	787.4	795.0
— Ages <51 Age-specific Rate	87.9	88.5	85.4	83.4	82.3	84.3	84.2	85.6	84.6	86.9	85.4	87.0	85.2	87.1	88.5	91.2
— Ages 50-75 Age-specific Rate	1,381.3	1,341.7	1,298.7	1,259.6	1,236.1	1,228.1	1,203.4	1,194.9	1,175.6	1,174.0	1,180.5	1,197.6	1,211.1	1,226.2	1,247.2	1,265.9
— Ages 75+ Age-specific Rate	8,004.9	7,915.3	7,846.8	7,760.8	7,674.5	7,631.8	7,643.1	7,629.8	7,668.9	7,743.9	7,815.2	8,016.7	8,015.3	8,122.1	7,994.6	8,013.5

**Note:** Age-adjusted mortality rates are based on age-specific mortality rates per 100,000 population in specified group. Age-adjusted mortality rates are computed by the direct method, using as the standard population the age distribution of the total population of the United States for the year 2000. Records with age not stated were included in the "75+" row.

**Source:** Division for Vital Records & Health Statistics, Michigan Department of Health & Human Services

**Updated:** November 2019

## Deaths in Macomb County, MI by Age and Year (2000 - 2017)

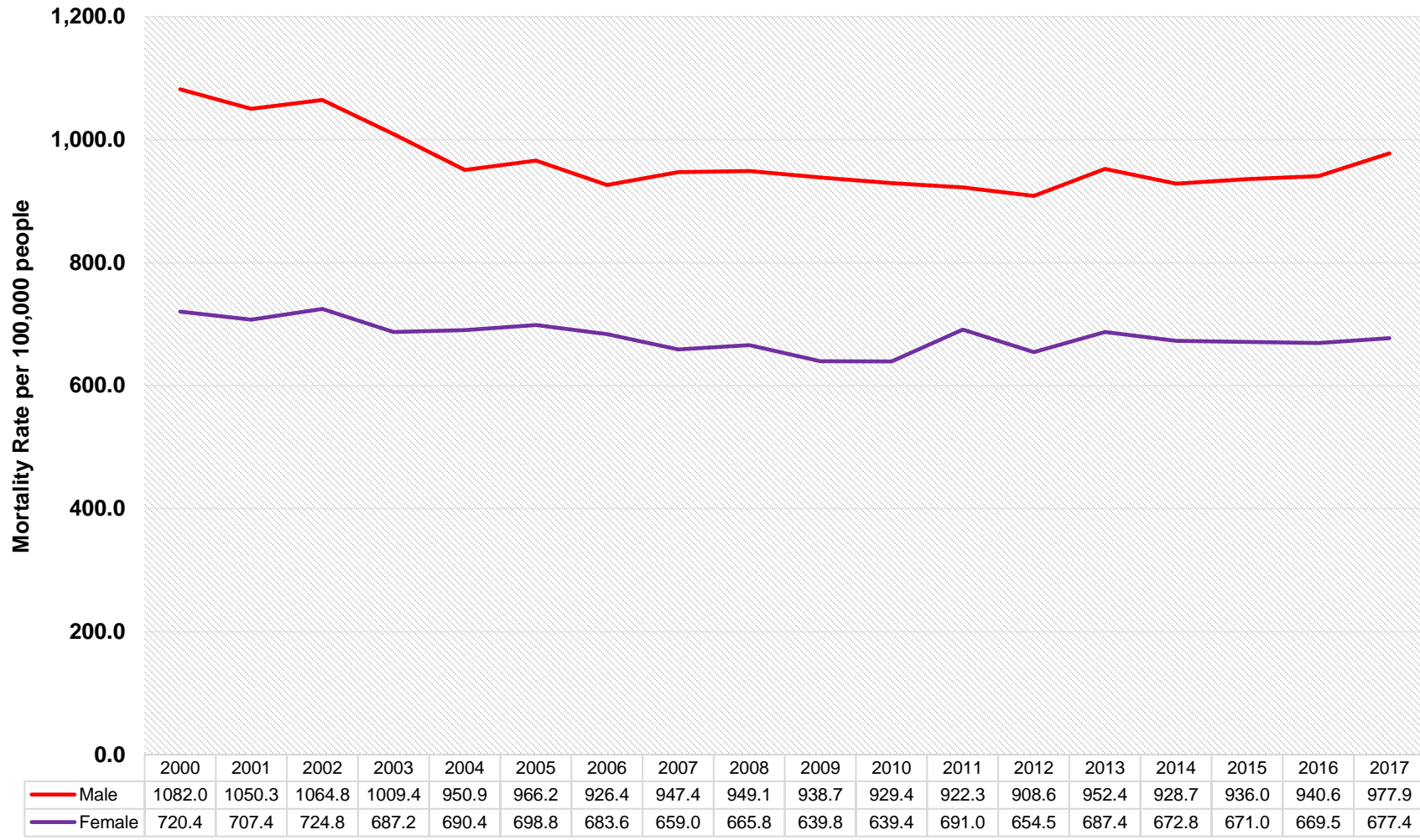


**Note:** Records with age not stated were included in the "85+" row.

**Source:** Division for Vital Records & Health Statistics, Michigan Department of Health & Human Services

**Updated:** November 2019

### Age-adjusted Mortality Rates by Sex and Year in Macomb County, MI (2000 - 2017)

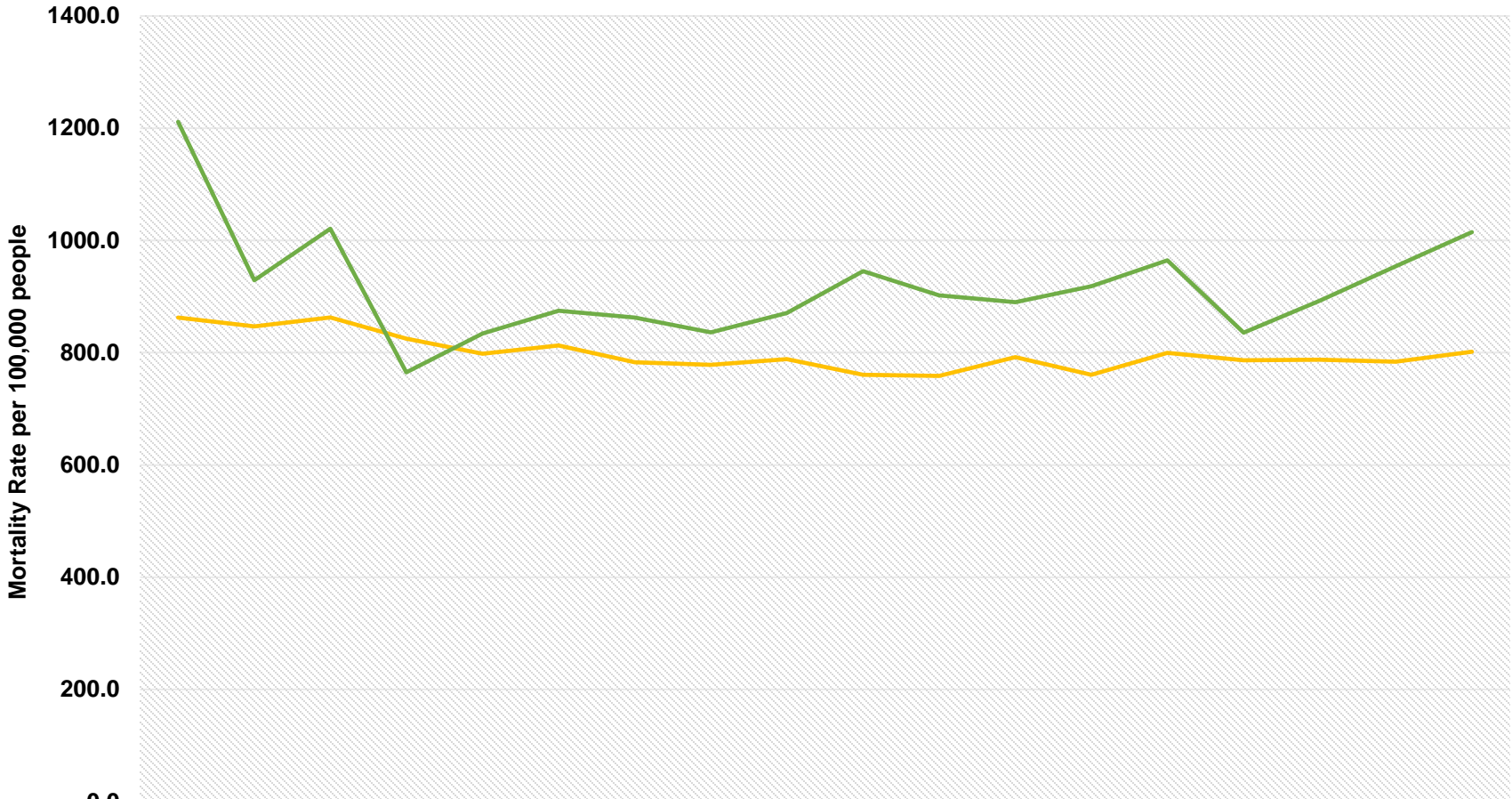


**Note:** Age-adjusted mortality rates are the rate of deaths per 100,000 people in the specified group. Death records with unknown race/sex and all other races were randomly allocated prior to computation of age-specific death rates.

**Source:** Division for Vital Records & Health Statistics, Michigan Department of Health & Human Services

**Updated:** November 2019

### Age-adjusted Mortality Rates by Race and Year in Macomb County, MI (2000 - 2017)



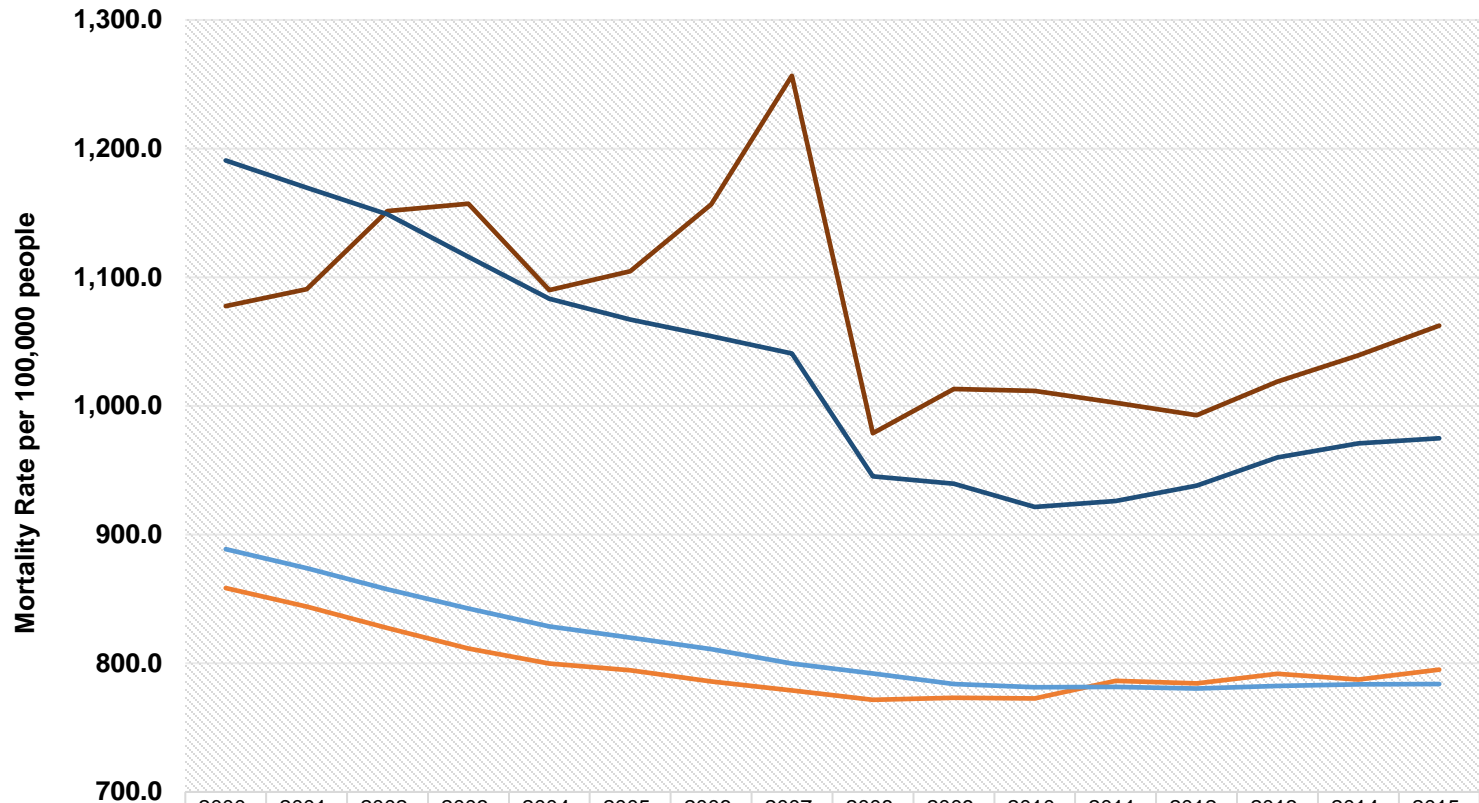
	2000	2001	2002	2003	2004	2005	2006	2007	2008	2009	2010	2011	2012	2013	2014	2015	2016	2017
White	862.6	846.9	862.8	824.8	798.1	813.1	783.1	778.1	788.7	760.8	758.6	792.2	760.6	799.6	786.7	787.4	783.8	801.6
Black	1211.3	929.2	1021.0	765.0	834.0	874.9	862.7	836.1	870.9	945.5	902.2	890.1	918.5	964.5	835.9	892.6	953.7	1014.8

**Note:** Age-adjusted mortality rates are the rate of deaths per 100,000 people in the specified group. Death records with unknown race/sex and all other races were randomly allocated prior to computation of age-specific death rates.

**Source:** Division for Vital Records & Health Statistics, Michigan Department of Health & Human Services

**Updated:** November 2019

### Age-adjusted Mortality Rates in Macomb County and Michigan by Poverty Status and Three-Year Moving Averages (2000 - 2017)



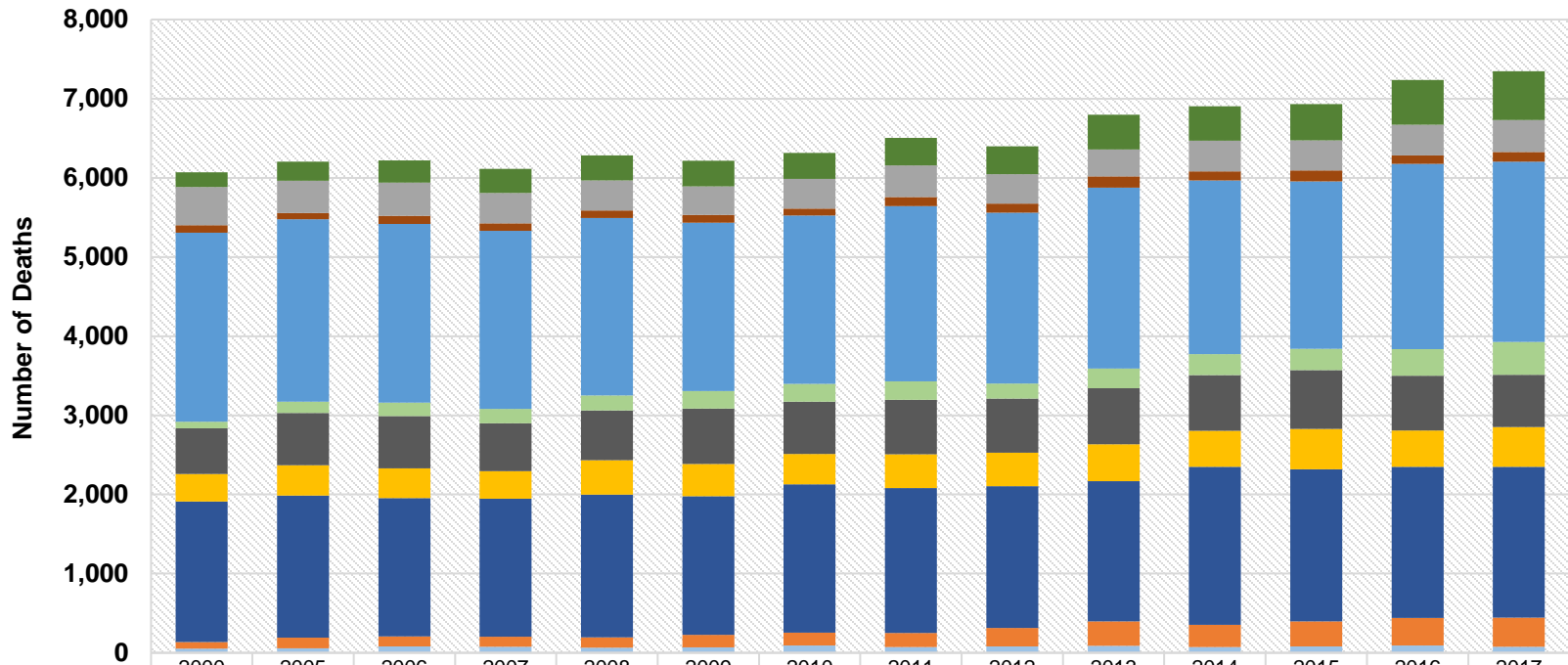
	2000-2002	2001-2003	2002-2004	2003-2005	2004-2006	2005-2007	2006-2008	2007-2009	2008-2010	2009-2011	2010-2012	2011-2013	2012-2014	2013-2015	2014-2016	2015-2017
Macomb All Residents	858.5	844.1	827.5	811.4	799.7	794.6	785.9	779.0	771.6	773.2	772.8	786.4	784.3	791.9	787.4	795.0
Macomb Residents in Poverty	1,077.7	1,090.7	1,151.5	1,157.2	1,090.0	1,104.7	1,156.8	1,256.6	978.8	1,013.1	1,011.6	1,002.6	992.7	1,019.0	1,039.2	1,062.5
Michigan All Residents	888.7	873.8	857.5	842.5	828.7	819.9	811.0	799.7	792.0	783.8	781.5	781.7	780.4	782.3	783.6	784.0
Michigan Residents in Poverty	1,190.8	1,169.6	1,148.9	1,115.8	1,083.2	1,067.1	1,054.1	1,040.9	945.4	939.6	921.5	926.2	938.1	960.0	971.0	974.9

**Note:** Census tract population poverty was estimated using methods recommended by the Public Health Disparities Geocoding Project. Age-adjusted mortality rates are based on age-specific mortality rates per 100,000 population in specified group. Age-adjusted mortality rates are computed by the direct method, using as the standard population the age distribution of the total population of the United States for the year 2000.

**Source:** Division for Vital Records & Health Statistics, Michigan Department of Health & Human Services

**Updated:** November 2019

### Deaths Due to Leading Causes of Death by Year in Macomb County, MI (2000 - 2017)



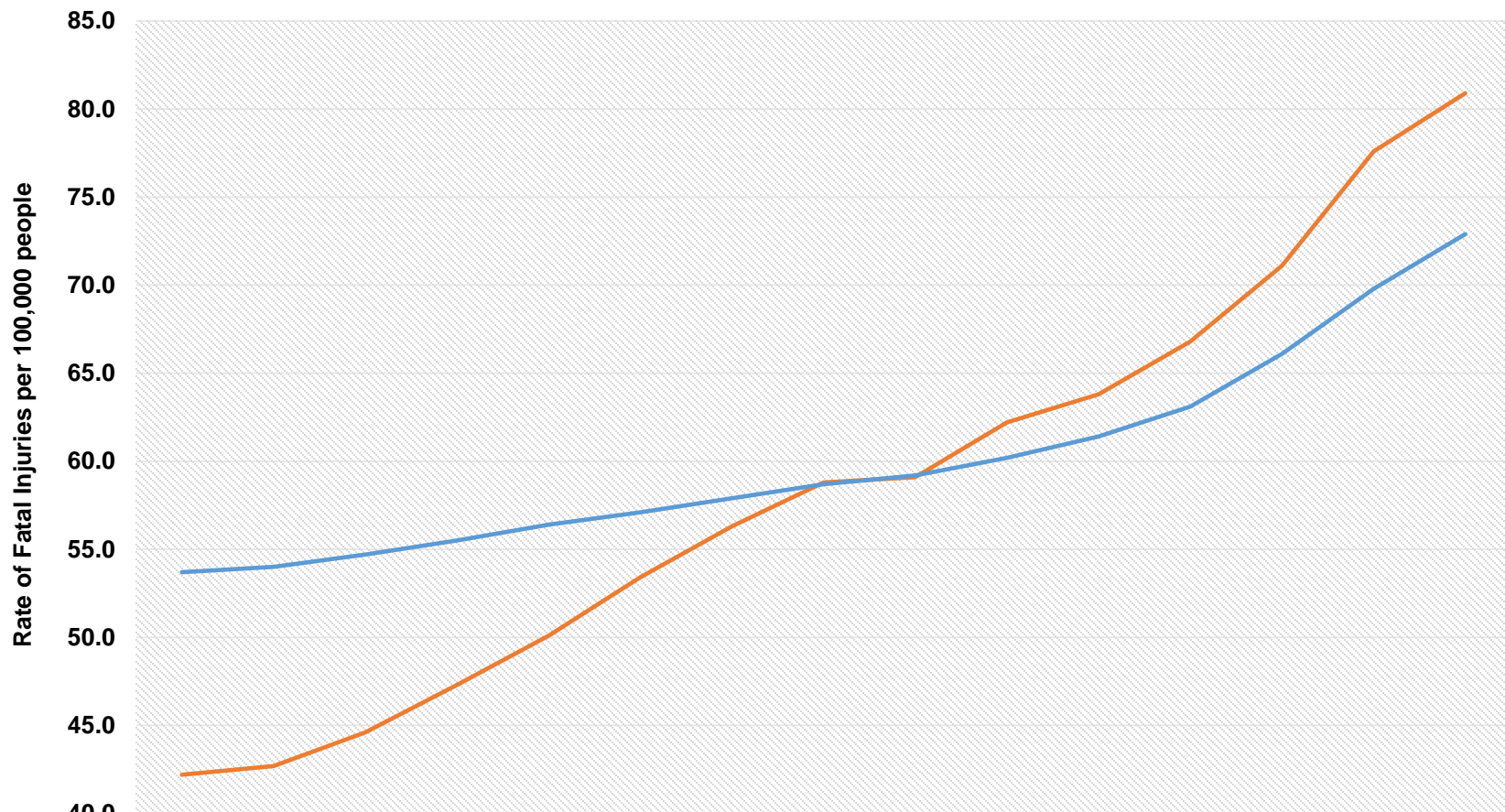
	2000	2005	2006	2007	2008	2009	2010	2011	2012	2013	2014	2015	2016	2017
Unintentional Injury	183	243	281	307	316	323	330	348	351	437	436	456	565	616
Stroke	485	408	421	381	378	360	372	397	372	341	386	380	386	401
Septicemia	93	79	101	95	95	100	87	114	113	141	115	139	108	123
Heart Disease	2,386	2,304	2,259	2,250	2,240	2,125	2,129	2,215	2,161	2,288	2,197	2,115	2,340	2,279
Drug-induced	83	143	168	180	193	223	223	233	188	248	264	269	337	412
Diabetes-related	580	660	662	607	628	701	664	689	685	708	703	743	691	664
COPD	348	380	374	349	434	404	382	427	422	465	453	509	457	500
Cancer	1,773	1,795	1,748	1,743	1,803	1,754	1,875	1,829	1,790	1,771	1,997	1,924	1,909	1,906
Alzheimer's	83	137	128	127	130	157	162	177	236	308	281	313	350	369
Alcohol-induced	54	56	79	75	65	69	91	74	79	90	73	82	92	75

**Note:** Cause of death was classified using ICD-10 codes. Care should be taken in drawing inferences from rates based on small numbers of events or small population base.

**Source:** Division for Vital Records & Health Statistics, Michigan Department of Health & Human Services

**Updated:** November 2019

### Age-adjusted Rates of Fatal Injuries in Macomb County, MI by 5-Year Moving Averages (2000 -2018)



	2000-2004	2001-2005	2002-2006	2003-2007	2004-2008	2005-2009	2006-2010	2007-2011	2008-2012	2009-2013	2010-2014	2011-2015	2012-2016	2013-2017	2014-2018
Macomb	42.2	42.7	44.6	47.3	50.1	53.4	56.3	58.8	59.1	62.2	63.8	66.8	71.1	77.6	80.9
Michigan	53.7	54.0	54.7	55.5	56.4	57.1	57.9	58.7	59.2	60.2	61.4	63.1	66.1	69.8	72.9

**Note:** Cause of death was classified using ICD-10 codes. Rates are per 100,000 people for the specified geographic area.

**Source:** Division for Vital Records & Health Statistics, Michigan Department of Health & Human Services

**Updated:** November 2019