

Macomb County Health Department Annual Report 2010



www.macombcountymi/publichealth

Table of Contents

LETTER FROM THE DIRECTOR.....	1	Breast and Cervical Cancer Screening Program.....	13
PUBLIC HEALTH MISSION STATEMENT AND VALUES.....	2	Hearing and Vision Program.....	13
2010 ORGANIZATIONAL CHART.....	3	DISEASE CONTROL.....	14
2010 BUDGET.....	4	Communicable Disease Program.....	14
ENVIRONMENTAL HEALTH.....	5-8	Tuberculosis.....	15
Food Service Sanitation Program.....	5	Sexually Transmitted Diseases and HIV Testing.....	15
Public Swimming Pool Program.....	5	FAMILY HEALTH SERVICES.....	16-22
Body Art Establishment Program.....	6	Family Planning Program.....	16
St. Clair River / Lake St. Clair Drinking Water Protection Project.....	6	Women, Infant & Children (WIC) Nutritional Program.....	17
Environmental Management and Risk Assessment Program (EMRAP).....	7	MICHild / Healthy Kids Program.....	18
Surface Water Improvement & Monitoring Team (SWIM).....	7	Public Health Nursing.....	18
Onsite Sewage Disposal and Onsite Water Supply Program.....	8	Children's Special Health Care Services (CSHCS).....	19
VITAL RECORDS.....	9	Macomb Fetal-Infant Mortality Review Program.....	19
Birth / Death.....	9	Vaccine-Preventable Disease Immunization Program.....	20
Minor Civil Division Birth & Death....	10	Special Adult Vaccine Program.....	21
HEALTH PROMOTION / DISEASE CONTROL.....	11-15	Dental Services.....	22
AREAS OF EMPHASIS AND ACHIEVEMENT.....	11	EMERGENCY PREPAREDNESS PROGRAM.....	23
HEALTH PROMOTION.....	12	MEDICAL EXAMINER'S OFFICE.....	24
Nutrition.....	12	ANIMAL SHELTER.....	26
Cardiovascular Disease Risk Reduction Program.....	12	LOCATIONS.....	27

Letter from the Director



Macomb County Health Department

43525 Elizabeth Road * Mt. Clemens, Michigan 48043
Tel: (586) 469 -- 5235 * Fax (586) 469 - 5885

Dear Friends and Colleagues:

As the new Director of the Macomb County Health Department, it is my pleasure to present our Annual Report for 2010. Since its inception in 1947, the Macomb County Health Department has continually and vigorously pursued its mission, which is ***to improve, promote, and protect the personal and environmental health of our residents and our communities.*** As Macomb County has changed in every conceivable way over the decades, what we do in order to pursue that mission has changed accordingly. For example, Emergency Preparedness is now an important component of our responsibilities. But at our core we are in the same business we always were, and will continue to be.

Let me illustrate the scope and diversity of the Health Department's activities by detailing just a few of the many services we provided to the community in 2010:

Health Department **Immunization clinics** provided 66,739 protective doses to children and 24,636 protective doses to adults and saw a doubling in the number of immunizations we provided for adolescents to over 8,600 doses, due to changes in new Michigan school rules.

The Health Department's **Household Hazardous Waste Program** kept 192,660 pounds – almost 100 tons! - of hazardous waste from polluting the County's soil and water. What we collected included 16,364 pounds of pesticides, 40,588 pounds of solvents, 41,931 pounds of oil-based paints, 172 pounds of mercury and 4,394 pounds of medications and personal care products.

Our **Hearing & Vision Program** provided hearing screening to 30,850 school-aged children and vision screening to another 42,040 children. These assessments uncovered possible problems and generated referrals for 1,361 (4.4%) for hearing assessment, and 5,563 (13.4%) for vision.

The **Family Planning Program** provided reproductive education, pelvic exams, Pap smears, pregnancy testing, and contraceptives to 3,066 clients.

In 2010, we found ways to meet community needs while reducing cost, increasing access, and maintaining or improving quality. These somewhat contradictory mandates make the job challenging, but with a staff of dedicated professionals and the support of the County's new administrative structure, we are up to the task.

Please take a moment to peruse our work and contact us with your comments and ideas. Tell us what we do well and how we can do better to improve, promote, and protect the personal and environmental health of our residents and our communities.

Sincerely,

A handwritten signature in cursive script that reads "Steven C. Gold".

Steven C. Gold, M.P.H.
Director / Health Officer

**Accredited by the Michigan Public
Health Accreditation Commission**

PUBLIC HEALTH MISSION STATEMENT

The Mission of the Macomb County Health Department is
to

Improve, Promote and Protect

the personal and environmental health of our residents
and communities.

Public Health Guiding Values:

We value the delivery of public health services in a professional, ethical and competent manner, which respects the dignity of the individual.

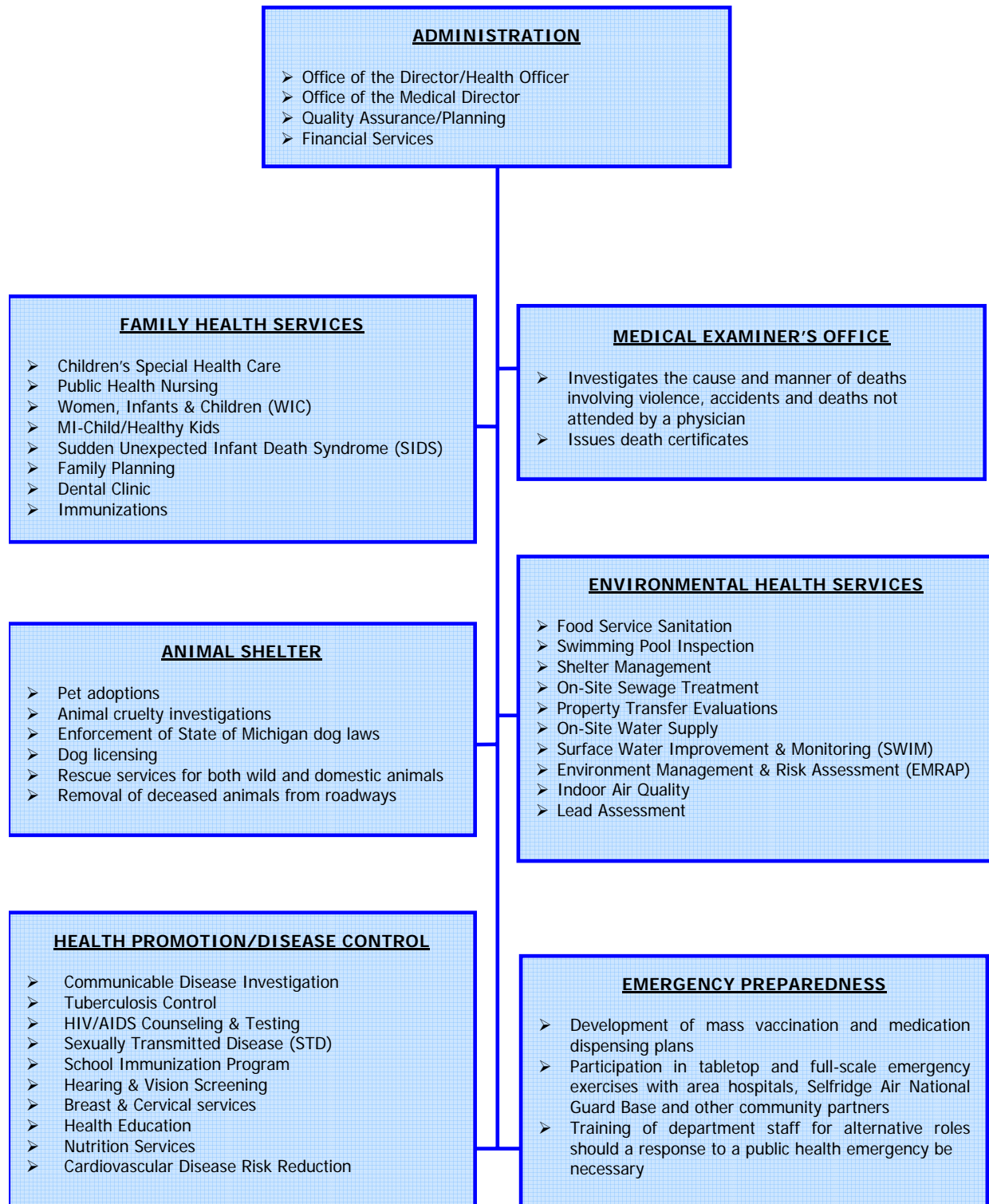
**We are committed to excellence in all we do.
We value professional growth.**

We value addressing community needs and the needs of population groups.

**We value a safe and healthy environment,
which promotes safe and healthy communities.**

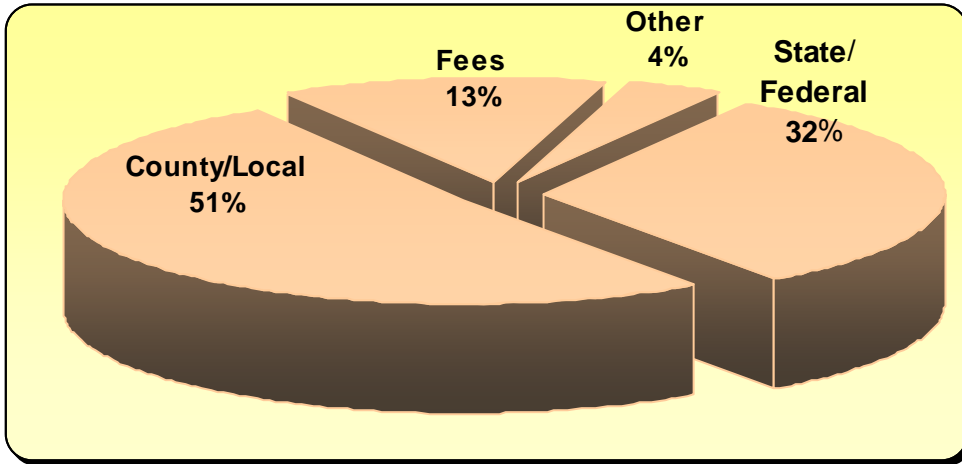
We value employee ideas, which generate quality improvement.

ORGANIZATIONAL CHART - 2010

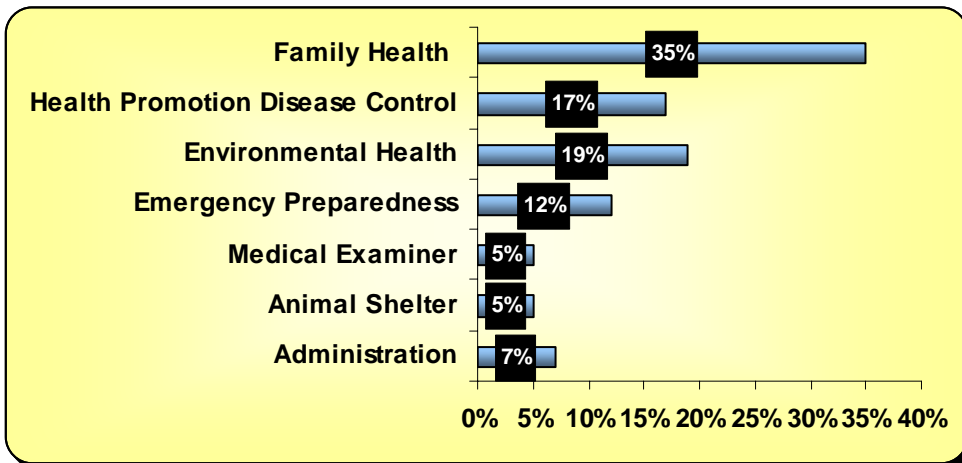


2010 BUDGET

Macomb County Health Department Funding Sources by Category Total Revenues: \$28,067,974



Macomb County Health Department Expenditures by Category Total Expenditures: \$28,067,974



ENVIRONMENTAL HEALTH

www.macombcountymi.gov/publichealth/EH/EHPrograms.htm

FOOD SERVICE SANITATION PROGRAM

Macomb County is home to over 2,300 licensed food service establishments which serve millions of meals each year. Food service establishments include facilities such as restaurants, coffee shops, school cafeterias, and banquet halls. Environmental Health program staff are responsible for conducting regulatory inspections at all licensed establishments to ensure that food preparation is conducted in a safe and sanitary manner and that the establishment is in substantial compliance with FDA Food Code requirements.



In addition, the Environmental Health Services Division provides new construction and remodeling plan review, investigation of foodborne illness complaints, and inspection of all temporary concession stands/food vendors.

NUMBER OF SERVICES PERFORMED IN 2010			
Food Service Inspections	4,368	Food Service Construction Plan Reviews	94
Follow-up Inspections	1,253	Food Borne Outbreak Investigations	2
Temporary Inspections	289	Food Service Complaints Investigated	363

PUBLIC SWIMMING POOL PROGRAM

The Environmental Health Services Division performs yearly inspections of all licensed public swimming pools and spas in Macomb County. Inspections address the condition of the pool structure, the enclosure area, water filtering and disinfection equipment, and safety equipment.

Pool water quality is monitored throughout the swimming season by requiring pool owners to contract with a commercial laboratory for weekly testing and provide results to the Health Department. Macomb County Health Department staff conducted 348 inspections of public swimming pools in Macomb County in 2010.



BODY ART ESTABLISHMENT REGULATON

The "Regulations Governing Body Art Establishments in Macomb County" was approved by the Board of Commissioners in 2008. The purpose of the regulation is to protect the health of the public and prevent disease transmission by establishing sanitation, construction and equipment standards in body art facilities along with an inspection schedule to verify compliance.

The Macomb County Health Department inspected 40 body art and permanent cosmetic facilities in 2010.

ST. CLAIR RIVER/LAKE ST. CLAIR DRINKING WATER PROTECTION PROJECT

The St. Clair River-Lake St. Clair Drinking Water Protection system continued to monitor the waters in the Huron to Erie Corridor in 2010. The plant operators, health departments and others view the data from these monitors in real-time.



The drinking water monitoring system includes all 13 water plant intakes from Port Huron to the City of Wyandotte. The monitoring devices stationed at these plants include, at a minimum, a multiparameter probe (pH, conductivity, temperature, turbidity, oxidation-reduction potential, dissolved oxygen, and chlorophyll). Selected plants are equipped with a fluorometer (petroleum compounds), a total organic carbon (TOC) analyzer and a gas chromatograph/mass spectrometer (volatile organic chemicals).

A companion project, the Regional Water Quality Information Management System (RWQIMS) makes the drinking water system data available to the public through the Internet at www.rwqims.com within 24 hours. The RWQIMS also stores and provide web-based public access to data from multiple water quality projects throughout southeast Michigan. Regional data owners are able to upload and share their information in a consistent and common format. To date over 15 million records have been stored in the RWQIMS. Data searching and retrieval can be accomplished via dropdown menu query system or selecting locations of interest on a map.

Efforts continued to establish a secure and sustainable funding mechanism for the long-term operation of this valuable tool in public health protection. A framework for a regional governing alliance was devised, but the accompanying cost allocation methodology was not acceptable to all parties, and therefore the alliance has not come to fruition as of 2010. Other funding sources have been and will continue to be explored.



ENVIRONMENTAL MANAGEMENT AND RISK ASSESSMENT PROGRAM (EMRAP)



EMRAP is a local approach to managing the environmental and public health threats posed by hazardous and polluting materials, which are routinely used, stored and transported through Macomb County. EMRAP staff responds to intentional and unintentional discharges of polluting materials originating from residential, commercial, industrial and institutional sources.

In 2010, EMRAP responded to 57 complaints of polluting materials threatening our air, soil, groundwater or surface waters and ultimately public health.

Macomb County's Household Hazardous Waste (HHW) Program is also administered through EMRAP. Throughout 2010, 3,440 households delivered 192,660 pounds of hazardous waste, which included approximately 16,364 pounds of pesticides, 40,588 pounds of solvents, 41,931 pounds of oil-based paints, 172 pounds of mercury and 4,394 pounds of unwanted medications and personal care products.



The Health Department continued its partnership for the 13th consecutive year with the Michigan Department of

Agriculture Clean Sweep Program, which covers the cost for the disposal of collected pesticides and mercury.

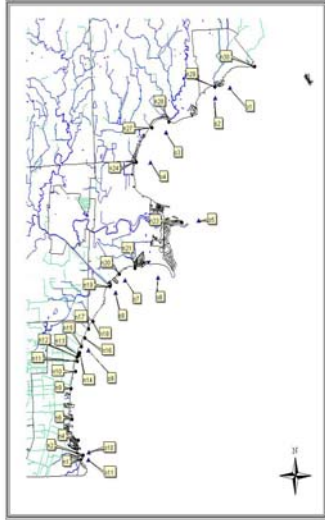


Additionally, growing concerns over the detection of trace pharmaceuticals in drinking water supplies prompted the Health Department to continue daily collection of waste medications. Residents can deliver such materials to certain Health Department offices on a daily basis for safe storage and disposal.

SURFACE WATER IMPROVEMENT & MONITORING TEAM (SWIM)

The Surface Water Improvement and Monitoring (SWIM) Team Program encompasses three important aspects of water quality: monitoring, investigations and education. Each week, samples continue to be collected at over 60 sites from tributaries of the six subwatersheds in Macomb County.

Essential information on water quality is gathered from these weekly samples. Samples are also collected twice weekly at the six public beaches in the county as part of the beach monitoring program. The monitoring program runs from April through September each year. Residents can view data on the internet at www.macombcountymi.gov/publichealth/EH/SurfaceWaterMonitoring.htm



The SWIM Team also is conducting illicit discharge investigations at commercial, industrial and institutional facilities within Sterling Heights and Clinton Township as part of a Clean Michigan Initiative Illicit Discharge Elimination Program (IDEP) Grant. Through the efforts of the SWIM Team, 70 million gallons per year of sewage and wastewater have been diverted away from Lake St. Clair and its tributaries and into an approved disposal/treatment system.

- ◆ Investigations Initiated **863**
- ◆ Cases Referred to Prosecutors Office **19**
- ◆ Investigations Resolved **846**

Educational efforts focused on water quality are conducted throughout the county. Efforts range from giving presentations at schools to participating in local outreach events. In 2010, over 10,000 residents, mostly school children, received information on water quality issues.

ONSITE SEWAGE DISPOSAL AND ONSITE WATER SUPPLY PROGRAMS

Areas of Macomb County that do not have municipal water and/or sewer available must rely on onsite facilities for their sewage disposal and water supply needs. The Macomb County Environmental Health Division administers public health regulations to ensure water supplies (wells) and sewage disposal systems are adequately installed and maintained to serve these residents. Onsite sewage and water supply systems also are required to be evaluated for adequate functionality at such time the property is transferred to another owner. Below is a summary of activities for these programs in 2010.

WATER SUPPLY AND SEWAGE DISPOSAL RELATED INSPECTION SERVICES

INSPECTION SERVICES	2010	2009	2008	2007	2006
Septic Permits Issued	243	232	211	299	407
Well Permits Issued	81	71	102	146	178
Well & Septic Permit Inspections	725	515	1,319	2,669	3,550
Water Samples Collected for Analysis	248	320	381	689	1,577
Septic System Evaluations for Property Transfer	415	397	345	420	545
Well Water System Evaluations for Property Transfer	186	178	149	150	239

VITAL RECORDS

www.macombcountymi.gov/publichealth/BRFS/healthstat.htm

BIRTHS AND DEATHS IN MACOMB COUNTY

Vital records are a source of important health information. Detailed health information is noted at the time of birth and death by the attending medical providers. These confidential health facts or data are collected on-line through a secure web-based system and compiled by the State to give us a picture of the health of our county and the state as a whole.

BIRTHS:

9,298 total births in Macomb County in the 2009 calendar year, down from **9,706** in 2008 ↓

- ⇒ **6.3%** were to women 19 years and younger, increase from **5.6%** in 2008 ↑
- ⇒ **8.1%** gave birth to low birthweight infants, down from **9.3%** in 2008 ↓
- ⇒ **1.8%** gave birth to very low birthweight infants, down from **2.8%** in 2008 ↓
- ⇒ **32.2%** were to unmarried mothers, increase from **30.3%** in 2008 ↑
- ⇒ **19.4%** smoked while pregnant, increase from **15.2%** in 2008 ↑
- ⇒ **10.1%** of mothers had less than 12 years of education, decrease from **10.2%** in 2008 ↓

Statistically, unmarried women, as a group, have lower incomes, are more likely to smoke than married women, and have a greater proportion of low birth weight babies. Compared to infants of normal weight, low birth weight and very low birthweight infants are at increased risk for impaired development and infant death.

DEATHS:

Major causes of death in Macomb County are similar to those statewide. The top three causes, Heart Disease, Cancer, and Chronic Lower Respiratory Disease account for over 57% of all mortality.

Leading Causes of Death and Cause-Specific Rates Macomb County and Michigan Residents, 2009 and United States Residents, 2007							
Michigan Rank	Cause of Death	Number of Deaths			Age-Adjusted Rate of Death		
		Macomb	Michigan	U. S.	Macomb	Michigan	U. S.
1	Diseases of the Heart	2,124	23,044	616,067	211.5	206.5	190.9
2	Cancer	1,752	20,174	562,875	181.3	181.9	178.4
3	Chronic Lower Respiratory Disease	406	4,941	127,924	41.7	45.1	40.8
4	Stroke	361	4,415	135,952	36.0	39.9	42.2
5	Accidents	323	3,671	123,706	36.7	35.4	40.0
	Total	7,572	86,310	2,423,712	777.1	784.6	760.2

Note: Rates are per 100,000 population.

Source: 2009 Michigan Resident Death File, Vital Records and Health Data Development Section, MDCH Volume 58, Number 19, May 20, 2010, National Vital Statistics Report, National Center for Health Statistics.

MINOR CIVIL DIVISION BIRTHS & DEATHS

MINOR CIVIL DIVISION, 2009	Top 3 Causes of Death				
	BIRTH	DEATH	HEART	CANCER	CLRD*
TOTAL	9,298	7,572	2,124	1,752	406
ARMADA VILLAGE	25	20	5	8	1
CENTER LINE CITY	92	124	35	28	8
EASTPOINTE	394	333	112	62	20
FRASER CITY	130	163	55	30	7
GROSSE PTE SHORES	0	3	0	0	1
MEMPHIS-PT CITY	10	7	0	2	0
MT CLEMENS CITY	220	190	62	25	8
NEW BALTIMORE	188	86	23	18	8
NEW HAVEN	72	28	5	7	1
RICHMOND CITY	71	73	19	13	10
ROMEO VILLAGE	97	41	16	10	2
ROSEVILLE CITY	579	513	139	105	33
ST CLAIR SHORES CITY	600	781	206	193	60
STERLING HEIGHTS	1,451	1,051	294	247	41
UTICA CITY	63	74	15	23	5
WARREN CITY	1,621	1,554	468	353	68
ARMADA TOWNSHIP	20	15	4	5	1
BRUCE TOWNSHIP	22	36	13	5	3
CHESTERFIELD TOWNSHIP	427	236	67	53	11
CLINTON TOWNSHIP	1,088	976	271	215	54
HARRISON TOWNSHIP	249	196	50	42	12
LAKE TOWNSHIP	0	0	0	0	0
LENOX TOWNSHIP	41	37	8	13	2
MACOMB TOWNSHIP	834	345	85	103	18
RAY TOWNSHIP	27	22	5	7	1
RICHMOND TOWNSHIP	7	25	4	7	5
SHELBY TOWNSHIP	736	495	129	139	20
WASHINGTON TOWNSHIP	233	147	33	39	6
UNKNOWN MCD	1	1	1	0	0

* Chronic Lower Respiratory Disease

Source: 2009 Michigan Resident Death File, Division for Vital Records and Health Statistics, MDCH

HEALTH PROMOTION / DISEASE CONTROL

www.macombcountymi.gov/publichealth/HPDC/HPDC.htm

The goal of the Health Promotion and Disease Control Division is to reduce the occurrence and impact of communicable and non-communicable diseases on residents of Macomb County.

2010 AREAS OF EMPHASIS AND ACHIEVEMENTS

2010 Areas Of Emphasis	Achievement
Develop and implement an on-line reporting system for the weekly reporting of communicable diseases from schools and childcare centers	With the collaboration of the Information Technology Department and CD staff the online reporting system for Communicable Diseases (replacing the paper-based IP-10 forms) was developed, and rolled out in December 2010.
Enhance the monitoring of processes to ensure fewer school and childcare delinquencies in immunization coverage reporting.	Delinquent schools and childcare centers remaining at the end of reporting periods was determined, and the contacts from SIP staff to resolve issues was assessed.
Enhance the speedy and efficient evaluation of Class B immigrants referred to TB control by the ICE and MDCH.	45 Class B Immigrants were referred to TB Control by ICE and MDCH. Thirty-five of these referrals were available for evaluation by the TB program, and 33 were reviewed within 2 months of referral.
Develop and implement an internal protocol for monitoring clients treated for Sexually Transmitted Infections (STI) as a direct result of Partner Notification.	Through development of a Quality Assurance protocol and reporting, the STD program staff elicited 317 partners from clients who tested positive in STD clinics. 120 (or 37.9%) of these partners tested positive for an STI and were appropriately treated.
Continue the expansion of coverage of the Breast and Cervical Cancer Screening Program to ensure increased services for persons meeting eligibility criteria.	A full-time PHN I/II position was added to the program with non-county funding, and filled in February 2010. There has been a 46.2% increase in clients served during calendar year 2010 compared to 2009.
Expand the coverage of the Cardiovascular Disease Risk Reduction Program's (CVDRR) health educational and promotional programs in County schools.	Ten (47.6%) Macomb County School Districts were provided with cardiovascular disease educational programs during 2010.
Extend tobacco control services to enhance the implementation of Michigan's Smoke-free Legislation (effective 1 May 2010), and to reduce exposure to new tobacco products (hookah, and e-cigarettes).	MCHD received a grant from Michigan Department of Community Health (MDCH) to implement a work plan including activities to prevent tobacco use, to monitor and track compliance, and to promote tobacco dependence & cessation treatment.

HEALTH PROMOTION

438 Health Education programs were provided to 12,747 community participants.

HEALTH EDUCATION INDICATORS	2010	2009	2008
Programs provided	438	432	369
Participants	12,747	12,586	10,442
CAR SEAT CHECKS			
Total Car Seats Checked	277	260	337
New Car Seats	67	74	105
% <i>Wrongly Installed</i>	76.7%	76.9%	79.3%

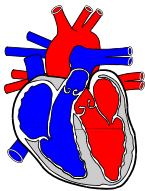
277 car seat checks were done for 2010. 76.7% of child car seats that were noted to be “wrongly-installed”.

NUTRITION

6,147 clients received nutrition services through 98 programs presented.

NUTRITION INDICATORS	2010	2009	2008
Nutrition programs	98	104	106
Nutrition program participants	6,147	5,941	6,164

CARDIOVASCULAR DISEASE RISK REDUCTION PROGRAM



Heart disease and stroke are the 1st and 4th leading causes of death in Macomb County. Risk factors for cardiovascular disease (CVD) include high blood pressure, cigarette smoking, no physical activity, obesity (BMI >30), diabetes and high cholesterol. MCHD provides comprehensive risk reduction services for residents.

There were 20 CVD screenings reaching 1,174 participants. 1,746 BP Screening participants were served at 89 screenings. 1,823 Elementary students participated in non-communicable disease prevention programs, representing a 186% increase. Ten school districts received Cardiovascular Disease Risk Reduction (CVDRR) services during January-December 2010.

CVDRR PROGRAM INDICATORS	2010	2009	2008
CVD Screening sites	20	18	24
CVD Screening Participants	1,174	1,243	1,636
BP Screening sites	89	83	111
BP Screening Participants	1,746	1,735	1,943
CVD/BP Follow-up Clients	350	500	541
Healthy Kids student contacts	2,308	2,519	1,783
Elementary Students NCD prevention	1,823	637	567
School Districts receiving CVD services	10	-	-
Senior Citizen participants	161	224	161

BREAST AND CERVICAL CANCER SCREENING PROGRAM

The goal of a Breast and Cervical Cancer Screening Program (BCCSP) is to reduce morbidity and mortality from breast and cervical cancer among the most economically vulnerable female population. The BCCSP program has expanded services to 2 sites: Knollwood Office Complex in Clinton Township, and the Southwest Health Center (SWHC) in Warren.

A total of 1,095 clients were seen, recording a 46.2% increase in total clients over the achievement for the year 2009, when 749 clients were seen, and an 87.8% increase over 2008 numbers. New clients into the program has seen a 167.5% increase since 2008. The number of returning/repeat clients also increased by 32.1% compared to 2008.

BCCSP INDICATORS	2010	2009	2008
Clients screened	1,095	749	583
New Clients	642	435	240
Repeat Clients	453	314	343
Breast cancer diagnosed	19	12	5
Cervical Cancer Precursors	9	9	8

19 cases of breast cancer were diagnosed and 9 cases with cervical cancer precursor conditions. No cases of invasive cervical cancer were identified.

In 2008, the Macomb County Health Department was granted an amendment to the Macomb Health Plan agreement, with the goal to provide for a doubling of the number of women served to a minimum of 1,500 by 2012. The expected 2010 achievement of 1,140 women screened was 96.1% met.

HEARING AND VISION PROGRAM



The Hearing & Vision Screening Program provides periodic screening of children at least once between the ages of three and five years (pre-school) and every other year on specified schedules for the school-aged child (Kindergarten and Grades 1-11).

30,850 school-aged children received hearing screening, and 42,040 received vision screening. There were 1,361 (or 4.4%) referrals for hearing assessment, and 5,563 (or 13.4%) were referred for vision assessment.

6,838 preschoolers received hearing screening and 357 (or 5.2%) were referred for further assessment. 6,843 preschoolers were also screened for vision and 488 (or 7.1%) were referred for further assessment.

HEARING & VISION INDICATORS	2010	2009	2008
School-aged Hearing Screened	30,850	27,442	30,954
School-aged Vision Screened	42,040	45,504	54,760
Preschool Hearing Screened	6,838	8,474	10,843
Preschool Vision Screened	6,843	8,486	10,812
Special Ed. Hearing Screened	499	529	126
Special Ed. Vision Screened	523	457	145

DISEASE CONTROL

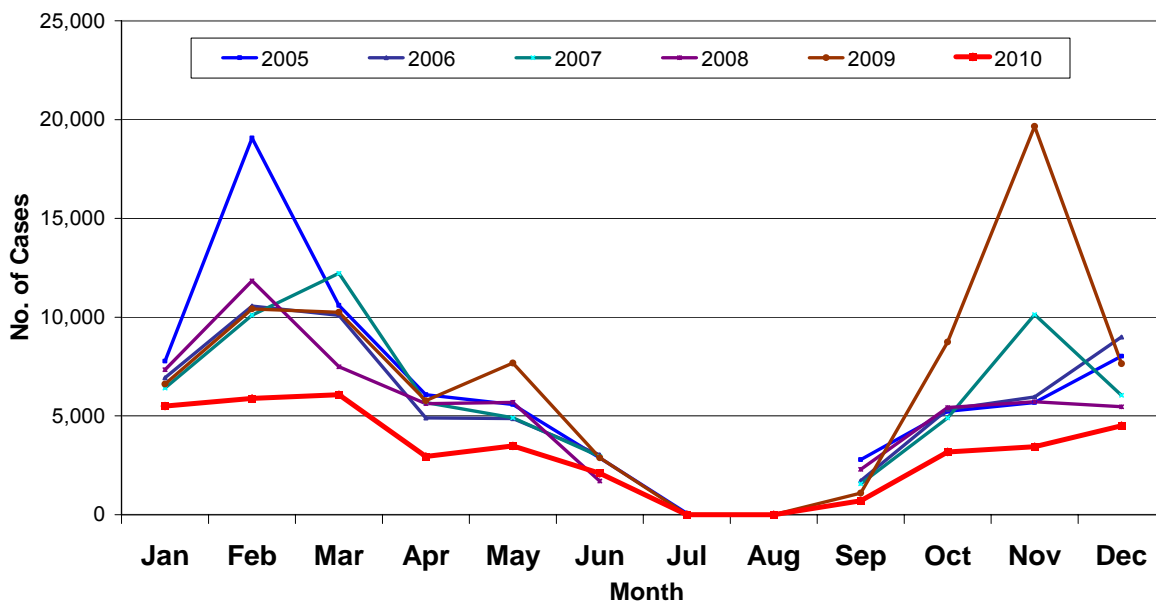
COMMUNICABLE DISEASE PROGRAM

Surveillance (Reportable Communicable Diseases, 2010 - 2008)

2010 RANK	TOP 10 REPORTABLE DISEASE	2010	2009	2008
1	Flu-like disease	39,518	79,787	58,801
2	Chlamydia	2,136	2,219	1,540
3	Hepatitis C (chronic)	518	542	509
4	Gonorrhea	509	570	446
5	Campylobacter	133	46	71
6	Hepatitis B (chronic)	126	161	145
7	Chicken Pox	98	120	224
8	Salmonellosis	76	81	63
9	Meningitis viral	74	71	94
10	Pertussis	72	70	30

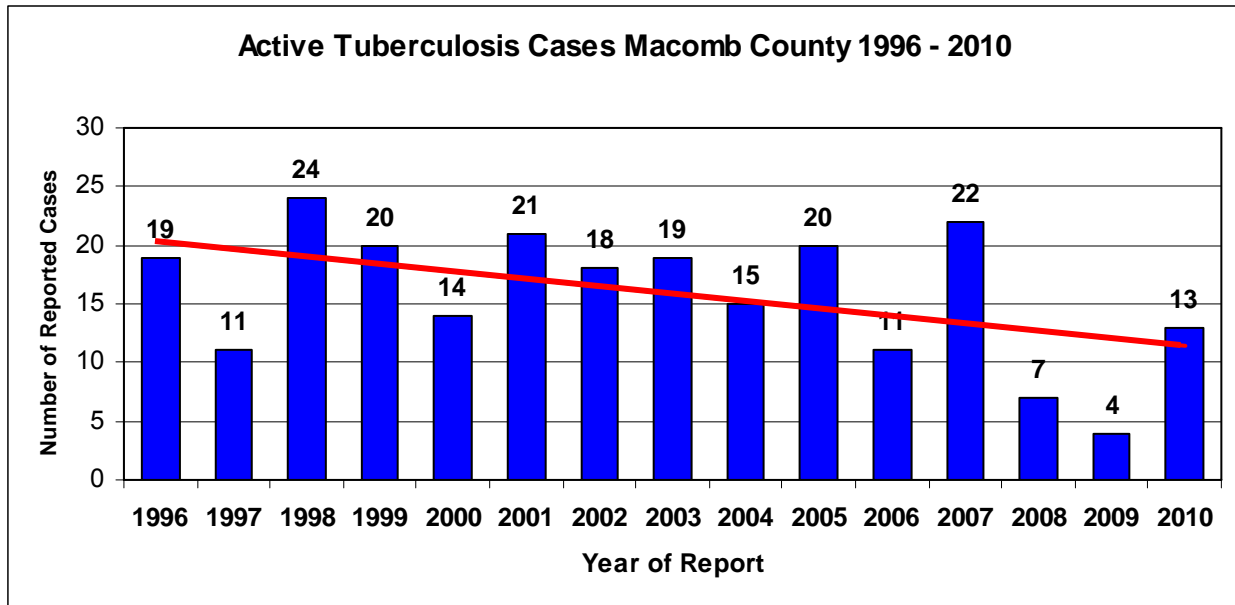
1,361 communicable disease investigations were conducted in 2010. The target for turn-around-time for Michigan Disease Surveillance System (MDSS) reporting of confirmed cases is 90% in 10 days. For 2010, the turn-around-time for MDSS reporting was 88.0%.

**Macomb County Influenza-Like Illness Reports
2005-2010**



TUBERCULOSIS

There were 12 active TB cases reported in 2010. As of December 31, 2010 3 cases had died, 1 had completed treatment, 4 were being treated by Directly Observed Therapy (DOT), 3 were being treated without DOT, and 1 case still had diagnostic information pending and awaiting commencement of treatment.



45 referrals of Class B immigrants from ICE/MDCH were received. Of the 37 cases who had adequate information provided and who were located in Macomb County, 33 or 89.2% were evaluated.

SEXUALLY TRANSMITTED DISEASES AND HIV TESTING

There were 4,066 visits to STD clinic which is 8.6% more than the total number of clients seen in 2009, and 16.8% more than the total number seen in 2008.

STD/HIV CLINIC INDICATORS	2010	2009	2008
STD Clinic attendance	4,066	3,744	3,480
STD Community Ed. participants	972	1,385	2,655
HIV Confidential testing	2,337	1,854	1,913
<i>% Returned for Post-Test counseling</i>	86.3%	87.9%	88.8%
Number of Syphilis tests performed	3,379	3,133	2,939
<i>% Syphilis tests positive</i>	1.3%	1.0%	1.1%
Number of Chlamydia tests performed	3,477	3,220	2,917
<i>% Chlamydia tests positive</i>	14.0%	12.0%	13.9%
Number of Gonorrhea tests performed	3,481	3,220	2,919
<i>% Gonorrhea tests positive</i>	3.3%	4.5%	4.8%

There was a 26.1% increase in the number of HIV (anonymous and confidential) tests performed. The return rate for results was 86.3%.

SYPHILIS SURVEILLANCE	2010	2009	2008	2007	2006
Number of primary syphilis cases	2	2	6	2	3
Number of secondary syphilis cases	7				
Number of early latent syphilis cases	6	14	13	10	7
Number of late latent syphilis cases	11				
Number of latent (unknown duration)	1				
TOTAL ALL CASES	27	16	19	12	10

SOURCE: MDCH STD Statistics - **Number of cases** reported by outpatient clinics, hospitals, doctors' offices and other health facilities. These cases represent testing for Macomb residents whether testing occurred within the State of Michigan or in other states

9 cases of infectious (primary and secondary) syphilis were reported compared to the annual average number of 3.25 infectious syphilis cases for the previous four years (2006-2009). This represents a 176.9% increase. The total of all cases of syphilis reported in 2010 was 27 which is 89.5% above the annual average for 2006-2009 (of 14.25 cases).

FAMILY HEALTH SERVICES

www.macombcountymi.gov/publichealth/ClinicServices/fhs_FamilyHealthServices.htm

FAMILY PLANNING PROGRAM


The MCHD Family Planning Program is a Title X, Federally funded program serving women and men for reproductive health care. In 2010, the Family Planning Program provided reproductive education, pelvic exams, Pap smears, pregnancy testing, and contraceptives at reduced cost to 3,066 clients. The Program encourages low-income females between 19 and 44 years of age to apply for the Plan First! Program, administered by the State of Michigan. This program covers the cost of pelvic exams, Pap smears, and birth control for eligible females, thereby increasing access to vital reproductive health care. Applications for Plan First! are available in our Family Planning Clinics with staff providing assistance in completion and submission.



Two full-time Nurse Practitioners and one part-time Gynecologist perform exams while providing direction to clients on how to proceed with their health care, including medical referrals when needed.

CLIENTS SERVED	2010
Clients	3,066
Pap Smears	1,831
Abnormal Pap Smears	206
Pregnancy Tests	1,448
Medical Referrals	146
Clients on Plan First!	1,390
Outreach in Community	292

WOMEN, INFANTS & CHILDREN (WIC) NUTRITION PROGRAM

- In 2010, the Macomb County Health Department was pleased to accept a special USDA grant for a WIC Breastfeeding Peer Counseling program. In November, the Health Department hired two part-time peer counselors. Combining peer counseling with the on-going breastfeeding promotion efforts in WIC agencies has the potential to significantly impact breastfeeding rates among WIC participants, which are significantly lower than the general population. The long-range vision is to institutionalize peer counseling as a core service in WIC. New classes, called “Every Ounce Counts”, for pregnant women interested in learning more about breastfeeding were also offered.
- 
- The WIC program continued to embrace technology for delivering nutrition education to participants. In 2010, over 5000 participants elected to complete their nutrition education component using the internet website www.WIChealth.org. By utilizing this option, participants were able to by-pass a visit to the WIC office. This initiative has streamlined services, saves time and resources for WIC families, and has freed up WIC staff time in order to increase enrollment. About half of all Macomb County WIC participants now elect to use the internet method for nutrition education.
 - In the summer of 2010, the WIC program participated in Project Fresh, a joint effort between the Michigan Department of Community Health WIC Program and Michigan State University Extension. WIC families were issued special vouchers for Michigan-grown fruits and vegetables that are redeemed at the Mt. Clemens Farmer’s Market, as well as other local farm outlets. This year \$12,840 worth of vouchers were issued to purchase locally grown produce.
 - In 2010, the Macomb County WIC Program completed 21,046 enrollments, including 1779 new pregnant women, 368 new breastfeeding women, and 3937 new infants. In addition 11,117 children under the age of five and 2169 infants received a health evaluation with nutrition education, and were re-enrolled. An average of 8,987 women, infants and children participated each month.
 - The WIC program continued to offer nutrition care plans for high-risk participants. In 2010, 690 participants were provided therapeutic counseling from a Registered Dietitian for medical conditions including prematurity, low birth weight, child obesity, gestational diabetes and failure to thrive.
 - In 2010, WIC participants redeemed \$6,677,806 in WIC food benefits at Macomb County grocery stores and vendors. WIC benefits include low-fat milk, eggs, dried or canned beans, peanut butter, whole grain cereals, fruit juice, fresh fruits & vegetables, whole grain breads, cheese, canned fish and infant formulas.

- The WIC program performed 10,932 hemoglobin tests in 2010 to screen for iron-deficiency anemia, a chronic health condition in pregnant women and young children that can lead to increased illness and delayed learning.
- Throughout 2010, the WIC Program made thousands of referrals to community services and collaborative agencies: Maternal Infant Health Program (4,239), Project Fresh (3,629), local doctors (5,654), registered dietitians (3,786), Early On/MISD (229), family planning services (428) pediatric dentists (212), emergency food pantries (1,065), food stamp program (2,019), Healthy Kids/Medicaid (367), smoking cessation programs (182), summer feeding program (624), MSUE (69), Head Start (86), Children's Special Health Care Services (42), and Community Mental Health (29).



MICHILD/HEALTHY KIDS

During 2010, 1,585 low-income Macomb County children and pregnant women received MICHild/Healthy Kids health insurance through public health outreach and case finding efforts, providing them with a medical home and access to quality well child care, immunizations screening tests, and sick care supervision. There is continued high demand for assistance with follow-up after applications reach the Department of Human services. This high demand uses an e-mail process between Macomb County Health Department staff and the Department of Human Services staff that allows cases with extenuating circumstances, like illness of a newborn or delivery prior to reaching eligibility, to be processed more quickly thus assuring access to needed medical care.



PUBLIC HEALTH NURSING

The Health Department provides public health nursing services to individuals and families throughout Macomb County. The mission is to improve, promote, and protect the health status of county residents through health screening, assessment, anticipatory guidance, education and referral as needed. Services are delivered in homes, schools, clinics, and community outreach sites. Public Health Nursing provided 12,308 services to 5,893 individuals in 2010.

The Maternal Child Health Field Nursing program is comprised of highly trained Public Health Nurses (PHNs) who have extensive education and experience in assessing infants, children and their families within the community setting. In 2010, the Maternal Child Health Field Nurses received 586 referrals and provided 550 home visits to families in Macomb County. Public Health Nursing provides services which include but are not limited to the following:

-
- The Macomb County Health Department collaborates with the Macomb Intermediate School District's Early On program to provide home visits and service coordination to families with infants who are at risk for a developmental delay. In 2010, Maternal Child Health Field Nurses received 79 referrals for Early On evaluation, enrollment and service coordination.
 - Lead poisoning can occur when lead gets in to the body. Even small amounts of lead can cause serious health problems. Children under the age of 6 are especially vulnerable to lead poisoning, which can seriously affect mental and physical development. In 2010, Public Health nursing provided lead case management, education and follow up to 45 children at risk for lead poisoning.
 - In an attempt to reduce the numbers of infant deaths in Macomb County, the Public Health Nursing program continues promotion of the Safe Sleep campaign, which includes Safe Sleep brochure mail outs to all new parents and community educational presentations. In 2010, the Macomb County Health Department, through Public Health Nursing, mailed out 8,554 Safe Sleep brochures to new families in Macomb County.
 - Newborn hearing screening can find possible hearing loss in the first few days of a baby's life. If a hearing loss is found early, intervention can begin to prevent a possible speech and language deficit in the future. Maternal Child Health Field Nurses received 200 referrals from the Michigan Department of Community Health to assist Macomb County families in obtaining repeat hearing testing for their newborns who have failed their initial newborn hearing screen.
 - Through a partnership with the Macomb Intermediate School District, MSU Extension and Great Parents Great Start Macomb, the Macomb County Health Department provided 8,554 families of newborns with educational and informational materials, including the "All-Ways Growing" baby book.

CHILDREN'S SPECIAL HEALTH CARE SERVICES (CSHCS)

The MCHD locally based services staff are dedicated to assisting children and families with qualifying medical conditions to meet their specific health care needs. In 2010, over 2,000 children received an array of services for medical, hospitalization, hospice, pharmacy, diagnostic, private duty nursing, and specialty equipment/ramp services.

Public Health Nursing provided Case Management and Care Coordination services through home visiting and telephone contact to 236 families.

FETAL-INFANT MORTALITY REVIEW PROGRAM (FIMR)

The MCHD Case Review Team (CRT) is comprised of a broad range of providers representing public health, healthcare systems, social service agencies, education, and other community experts. The task of the MCHD FIMR Case Review Team is to evaluate and discuss medical and psychosocial issues surrounding a family's journey from pregnancy to the death of their infant. Significant systems issues are identified and recommendations for improvement in delivery of services are developed. In 2010, 17 infant mortality cases were abstracted and presented to the Case Review Team.

VACCINE-PREVENTABLE DISEASES

IMMUNIZATION DIVISION

Vaccines have reduced or eliminated many infectious diseases that once routinely killed or harmed many infants, children, and adults. However, the viruses and bacteria that cause vaccine-preventable disease and death still exist and can be passed on to people who are not protected by vaccines.



Vaccine-preventable diseases have many social and economic costs: sick children miss school and parents lose time from work. These diseases also result in doctor's visits, hospitalizations, and even premature death.

During 2010, Macomb County Health Department Immunization Clinics provided the following protective doses to our children:

- Measles/Mumps/Rubella – 3,243 doses
- Varicella (Chickenpox) – 7,524 doses
- Diphtheria/Tetanus/Pertussis(Whooping Cough) – 11,172 doses
- Haemophilis influenzae type b (HiB disease) – 4,479 doses
- Hepatitis A – 8,446 doses
- Hepatitis B – 3,280 doses
- Influenza – 8,978 doses
- Meningitis – 5,664 doses
- Polio – 5,325 doses
- Pneumococcal – 6,636 doses
- Rotavirus – 1,992 doses

Children under 5 are especially susceptible to disease because their immune systems have not built up the necessary defenses to fight infection. By immunizing on time (by age 2), parents can protect their children from disease and also protect others at schools or daycares.



It is also important for adults to continue getting immunized. Some adults incorrectly assume that the vaccines they received as children will protect them for the rest of their lives.

Pertussis (whooping cough) is very contagious and can cause serious illness — especially in infants who are too young to be fully vaccinated. Vaccination of pre-teens, teens, and adults with Tdap is especially important for families with new infants, to help protect those infants from Whooping Cough. New 2010 State Regulations require all children 11-18 years of age who are changing school districts or who are enrolling in 6th grade be vaccinated with the following: Meningococcal, Tdap, and Varicella.

During 2010, Macomb County Health Department Immunization Clinics provided the following protective doses to adults:

- Adult Diphtheria/Tetanus – 340 doses
- Adult Tetanus/Diphtheria/Pertussis(Whooping Cough) (Tdap) – 2,520 doses
- Hepatitis A – 1,971 doses
- Hepatitis B – 2,596 doses
- Influenza – 13,152 doses
- Immune Globulin – 11 doses
- Meningitis – 266 doses
- Measles, Mumps, Rubella – 1,003 doses
- Pneumonia – 724 doses
- Polio – 105 doses
- Rabies Pre/Post-exposure – 41 doses
- Varicella – 984 doses
- Shingles – 923 doses

YEAR	MENACTRA	TDAP	VARICELLA	TOTAL ADOLESCENT VACCINE ADMINISTERED
2009	1,134	1,732	1,199	4,065
2010	3,421	2,989	2,251	8,661

SPECIAL ADULT VACCINE PROGRAM

Clients 19 years and older who were without insurance or whose insurance does not cover the cost of vaccines, were able to get vaccines at Macomb County Health Department offices through the American Recovery and Reinvestment Act (ARRA) program. The vaccines were provided through the Michigan Department of Community Health. The only cost to the client was the administration fee of \$8.00 per shot.

- **HPV4 vaccine (Gardasil)** is available through this program for women 19 through 26 yrs of age. 491 doses were given in 2010.
- **Varicella vaccine** is available for those born in 1980 or after with no prior immunization/incomplete series or no evidence of chickenpox immunity. 272 doses were given in 2010.
- **Pneumococcal vaccine** is available for those who are current smokers, have asthmatic conditions, or other high risk health conditions. 193 doses were given in 2010.
- **Shingles vaccine (Zostavax)** was available for those 60 years of age and older. 602 doses were given in 2010.

DENTAL SERVICES

The Health Department's Dental Clinic provides high quality preventive and restorative treatment to adults and children of Macomb County who are considered to be low income. To qualify for services at the dental clinic, you must be a resident of Macomb County, have Medicaid or lack insurance, and meet income based eligibility criteria.



For individuals that are un-insured, fees are based on the Medicaid reimbursement rates and are significantly lower than private practice fees. Examples of some of the services that the Health Department Dental Clinic provides includes oral exams, cleanings, x-rays, fillings, fluoride treatments, sealants, crowns and dentures.

In an effort to improve access to dental care for low income children, the Health Department Dental Clinic collaborates with Head Start to provide "Head Start Days". Twice per year, for two days, the Dental Clinic schedules appointments only for children that are enrolled in Head Start. To reduce barriers and ease the enrollment process, the Head Start staff assists with making these appointments and is on-site during the dental visits.

DENTAL SERVICES	2010
Head Start Clients	73
Patients Serviced by Dentist	1,419
Patients Serviced by Hygienist	1,089

DENTAL SERVICES	2010	2009	2008	2007
Total Client Visits	2,426	2,710	2,411	2,465
Number of Services	5,901	6,100	6,553	6,650

DENTAL SERVICE PAYMENTS	2010	2009	2008	2007
Self Pay	2,041	2,224	1,694	1,347
Medicaid	1,231	1,444	1,340	1,737

EMERGENCY PREPAREDNESS PROGRAM

www.macombcountymi.gov/publichealth/EPP/EmergencyPreparednessProgram.htm

The Emergency Preparedness Program will begin a new Macomb County Health Department Medical Reserve Corps (MRC) program replacing the current Macomb County Volunteer Program which currently has over 225 volunteers. The MRC will be assisted by a group of second-year medical students from the Michigan State University Macomb Center. The students will provide areas of medical expertise within the organizational structure of the program.



The 2010 Emergency Preparedness Program in Macomb County provided staff with several training opportunities.

- Emergency Coordinating Team (ECT) – monthly training meetings were held demonstrating several topics of information and training. A communication exercise: Emergency Coordinating Center (ECC) management, command, and control exercises were provided to staff.
- Distribution Node training, held on four separate occasions, included both Environmental Health Logistics personnel and Facilities and Operations personnel. Exercises covered several areas pertaining to the Distribution Node. Emergency Preparedness Program staff met with Administration & Finance, Operations, Logistics and Planning Departments during this period.
- Training for staff and volunteers to provide Site Manager Training at a mass vaccination site.
- Selected Point of Dispensing (POD) mobile containers for several locations throughout Macomb County. These POD's contain pre-deployed supplies for mass vaccination operations and bio-terrorism responses.

Participation in Region 2 North Exercises/Meeting

- 800MHz radio, satellite telephone and Michigan Health Alert Network (MIHAN) Alerts
- Dispensing Site Plan for Selfridge Air National Guard Base was developed

MIHAN Notifications

- The Emergency Preparedness Program exercises the Michigan Health Alert Network at least monthly to the Emergency Coordinating Team
- Region 2 North
- Office of Public Health Preparedness
- Southeastern Michigan Emergency Preparedness Coordinators communication tests



MACOMB COUNTY MEDICAL EXAMINER'S OFFICE

www.macombcountymi.gov/publichealth/Medical-Examiner/medicalexaminer.htm

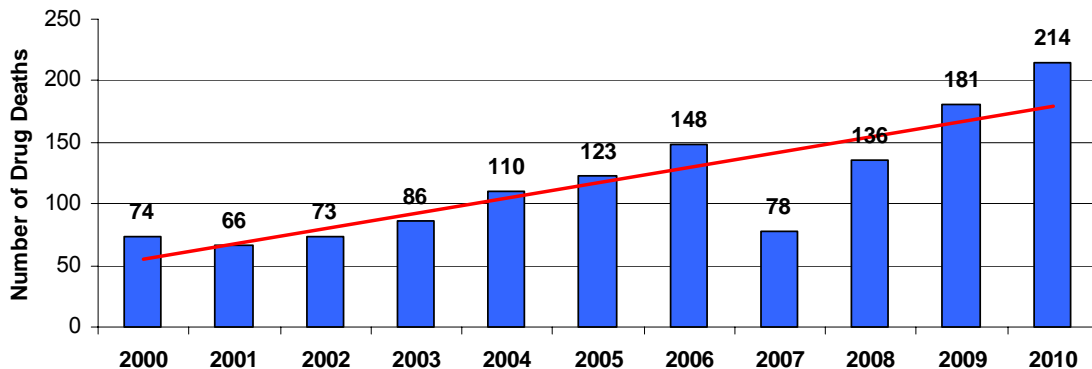
The Medical Examiner's duty is to investigate accidental, homicidal, suicidal, and sudden unexpected deaths which occur in the county. The investigation includes an examination of the scene, autopsy when necessary to determine the cause and manner of death and issuance of death certificates for these cases.



In 2010, the Medical Examiner's Office investigated 1,678 deaths, performed 533 forensic examinations and issued 3,083 cremation permits.

Additionally, 1,746 home hospice deaths were reported to the Medical Examiner's Office. The total number of death investigations decreased by 6.4% from 2009 and the total number of forensic examinations decreased by 8.4% from 2009. Cremation permits issued in 2010 showed a 6.2% increase from 2009.

Drug related deaths continue to rise in Macomb County. Abuse of prescription medications and use of illicit drugs, primarily cocaine and heroin continue to be a major concern.



The total number of drug related deaths increased by 18.2% from 2009. Homicide deaths also increased 11.8% in 2010 when compared to 2009.

The Medical Examiner's Office continues to work closely with the Gift of Life Organ and Tissue Procurement Agency and the Michigan Eye Bank. Due to this coordinated effort, the number of potential donors is maximized.



Manner of Death and Autopsies by Manner of Death

Case report date: 2010, 2009, 2008

MANNER OF DEATH	2010	2009	2008
ACCIDENT	304	280	263
HOMICIDE	19	17	12
INDETERMINATE	41	41	23
NATURAL	1200	1319	1315
PENDING	0	0	0
SUICIDE	102	118	103
UNSPECIFIED	12	17	10

AUTOPSIES BY MANNER OF DEATH	2010	2009	2008
ACCIDENT	219	209	185
HOMICIDE	19	16	12
INDETERMINATE	39	40	22
NATURAL	144	186	180
PENDING	0	0	0
SUICIDE	100	114	100
UNSPECIFIED	12	17	10

Case report manner of death by gender – Suicide 2010

MANNER OF DEATH - SUICIDE	MALE	FEMALE	TOTAL
ALL MEANS	78	24	102
POISON	10	11	21
FALL	1	0	1
INSTRUMENT	6	0	6
ASPHYXIA	25	8	33
FIRE/BURN	1	0	1
FIREARM	35	5	40
DROWNING	1	0	1

Note: Some deaths may have multiple Means of Death recorded.

Toxicology tests by gender - 2010

TOXICOLOGY PERFORMED	MALE	FEMALE	TOTAL
0 - 18 Years	12	2	14
19 Years and Older	330	158	488
Total	342	160	502

ANIMAL SHELTER

www.macombcountymi.gov/publichealth/animal.htm



The mission of the Macomb County Animal Shelter is to protect the health and safety of residents, and to protect animals and promote their humane treatment. The Animal Shelter has adopted a no-kill philosophy, and will make every effort to promote pet adoptions of healthy, non-aggressive animals by the general public and by approved animal rescue organizations. To reduce the number of homeless pets, all dogs and cats are spayed or neutered prior to adoption.

The Animal Shelter is committed to ensuring the safety of Macomb County residents with regard to animal related issues, while providing appropriate and humane treatment of the animals. The Shelter's animal placement services have been expanded to include Adopt a Pet Services, approved animal rescue leagues and donation of dogs to various service organizations including Leader Dogs, Paws with a Cause, and the U.S. Customs Service.

The Animal Shelter provides a wide range of animal related services, including pet adoptions, shelter for lost or unwanted animals, animal cruelty investigations, enforcement of State dog laws, dog licensing, animal bite reports, and quarantine follow up, rescue services for wild and domestic animals, removal of deceased animals from roadways, and placement services for exotic animals.



ANIMAL SHELTER ACTIVITY	2010
Canine - Received/Admitted	2,500
Returned to Owner	705
Adopted	746
Feline - Received/Admitted	4,631
Returned to Owner	81
Adopted	450
Ferret - Received/Admitted	15
Returned to Owner	0
Adopted	15

LOCATIONS



CENTRAL HEALTH SERVICE CENTER

43525 Elizabeth Road

Mt. Clemens, Michigan 48043

(586) 469-5235



KNOLLWOOD OFFICE CENTER

16931 19 Mile Road, # 130

Clinton Township, Michigan 48038

(586) 412-3387



SOUTHEAST HEALTH CENTER

25401 Harper Avenue

St. Clair Shores, Michigan 48081

(586) 466-6800



SOUTHWEST HEALTH CENTER

27690 Van Dyke

Warren, Michigan 48093

(586) 465-8090



VERKUILEN BUILDING

21885 Dunham Road

Clinton Township, Michigan 48036

(586) 469-5471



ANIMAL SHELTER

21417 Dunham Road

Clinton Township, Michigan 48036

(586) 469-5115
