



CLINTON RIVER SPILLWAY *Vision*

Gateway to the Great Lakes

MACOMB COUNTY, MI
2022

**CLINTON RIVER
SPILLWAY**

INTER-COUNTY
DRAIN BOARD

Working together to develop a long-term vision for the Spillway property that ensures the integrity of the Spillway is maintained in order to provide **flood control** while seeking opportunities to address **social equity** and **quality of life**, **improve water quality and habitat**, and **increase public use and enjoyment**. This document is intended to serve as a guide and tool for the various agencies to continue to move forward on improvements to the Spillway property in a coordinated manner.

ACKNOWLEDGEMENTS

MANY THANKS TO THE STAKEHOLDER COMMITTEE FOR THEIR INVALUABLE INPUT AND TIME

STAKEHOLDER COMMITTEE

Candice S. Miller, Macomb County Public Works Commissioner
Joe Suma, Lapeer County Drain Commissioner
Anne Vaara, Oakland County Water Resource Commissioners Office
Robert Wiley, St. Clair County Drain Commissioner
Emily Engelmann, Macomb County Public Works
John Crumm, Macomb County Road Commission
Mary Bednar, Clinton Township
Dan O'Leary, Clinton Township
Paul Gielegem, Clinton Township
Laura Kropp, City of Mt. Clemens
Don Johnson, City of Mt. Clemens
Ken Verkest, Harrison Township
Jason Bibby, Huron Clinton Metroparks
Amy McMillan, Huron Clinton Metroparks
Sue Kelsey, Clinton River Watershed Council
Tyler Klifman, SEMCOG

FUNDERS + SUPPORTERS



PROJECT MANAGERS

Amanda Oparka, Macomb County PED
Gerard Santoro, Macomb County PED
Jeff Bednar, Macomb County Public Works
Danielle Devlin, Macomb County Public Works

November 2022

CONTENTS

04		OVERVIEW + PROCESS
16		SPILLWAY VISION
24		VISION + PRIORITIES BY AGENCY

OVERVIEW + PROCESS

The process to develop this document was funded, in part, by the Southeast Michigan Council of Governments (SEMCOG) via their program to fund multi-jurisdictional planning efforts. In 2021, SEMCOG awarded Macomb County Planning and Economic Development with a grant to develop a vision for the 2 1/2-mile long, 230 acres of

public property that comprises the Clinton River Spillway in eastern Macomb County. The vision includes ensuring the integrity of the Spillway is maintained in order to provide flood control while seeking opportunities to address social equity and quality of life, improve water quality and habitat, and increase public use and enjoyment.

HISTORY + CONTEXT

HISTORY

The Clinton River Spillway was constructed by the US Army Corps of Engineers in the 1950s to provide flood control for Mount Clemens, Clinton Township and Harrison Township. It is a 2 1/2 mile long, 80-foot wide, 15'-30' deep channel that runs in a south-easterly direction from approximately Gratiot Avenue to Lake St. Clair. The Spillway includes a control weir at the upstream end to ensure low-water flow in the natural river channel. The Spillway includes adjacent public properties that total approximately 230 acres including 90 acres (39%) in Clinton Township, 85 acres (37%) in Harrison Township, and 55 acres (24%) in Mt. Clemens.



MANAGEMENT

The Clinton River Spillway is managed by an Inter County Drainage Board which is comprised of representatives from the Michigan Department of Agriculture & Rural Development (MDARD), Macomb County, Oakland County, St. Clair County and Lapeer County. Their authority is to maintain and improve the Spillway under the Michigan Drain Code.

The Macomb County Public Works Office is responsible for maintaining the Spillway and adjacent property. Harrison Township, Mt. Clemens, and Clinton Township contract with the Huron Clinton Metroparks to maintain the Spillway Trail. The Spillway is inspected bi-annually by the Corps of Engineers.



There was a long history of severe flooding events prior to the construction of the Spillway in the 1950s.

RECENT YEARS

In the early 1990's, an approximately 2 1/2-mile long walking and biking trail was constructed along the Spillway from Jefferson Avenue west to Gratiot Avenue. The trail is owned by the municipalities and maintained by the Huron Clinton Metroparks.

While the construction of the Spillway has been effective in controlling floodwater, it hampered fish passage, invasive plant species flourished, and sediment deposition, downcutting and erosion occurred. In 2011, the Macomb County Public Works Office, on behalf of the Inter-County Drainage Board, received a NOAA-GLRI grant to design habitat improvements on the Clinton River Spillway. In 2014, NOAA and the EPA awarded an additional \$4.0 million to assist with the construction of the environmental restoration project. The ecological enhancements resulted in the creation of 5 off-channel habitats, 12.8-acres of riparian emergent and shrub-scrub wetland habitat, a fishing pier, and 106-acres of invasive species control. The project was designed to increase native species cover, fish spawning and other wildlife diversity, reduce sediment loading, and remove invasive species while still meeting flood control measures.



A multi-million dollar environmental restoration and habitat creation project was completed in 2015 creating 5 off-channel habitats, 12+ acres of riparian wetlands, a fishing pier and 106-acres of invasive species removal.

Source: HRC Engineers



CLINTON RIVER SPILLWAY AND SURROUNDS



The Clinton River Spillway is a 2 1/2 mile long, 80-foot wide, 15'-30' deep channel that runs in a south-easterly direction from approximately Gratiot Avenue to Lake St. Clair and includes approximately 230 acres of property in Clinton Township, Mt. Clemens, and Harrison Township.

The **red** lines illustrate the existing 2 1/2-mile long, paved Spillway Trail as well as the paved Freedom Trail along Metropolitan Parkway leading to/from Lake St. Clair Metropark. The light **blue** lines illustrate existing (solid) or proposed (dashed) connecting sidewalks and/or side path systems. The **yellow** lines illustrate existing SMART bus routes.

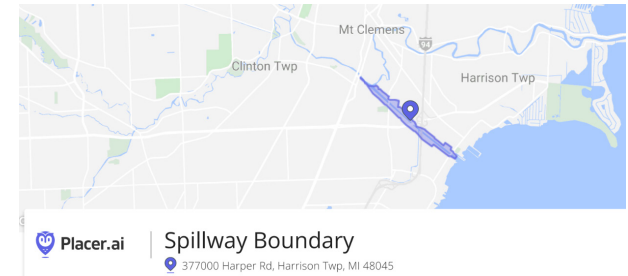
There are currently 4 designated parking areas along the Spillway (all on the north side) including at Jefferson Park and the Tucker Senior Center in Harrison Township, at the Harper Road Fishing Pier in Clinton Township, and at Shadyside Park in Mt. Clemens.

Formal fishing access is at Shadyside Park, the Harper Pier, and Jefferson Park. Canoe/kayaks can currently be launched at Shadyside Park or at the DNR Boat Launch on Lake St. Clair but can't get from one launch to the other because of the Spillway weir.

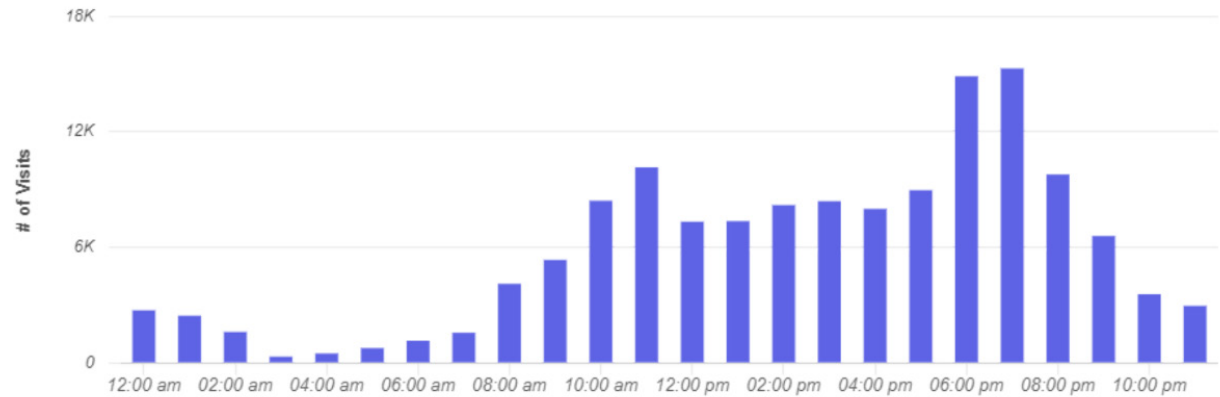
SPILLWAY VISITOR PATTERNS

Macomb County utilizes a tool/program called Placer.ai to better understand number of visitors and use patterns for a variety of destinations. An analysis was run for the Clinton River Spillway property to understand usage patterns over a 12 month period from March 2021 - March 2022. A few highlights include:

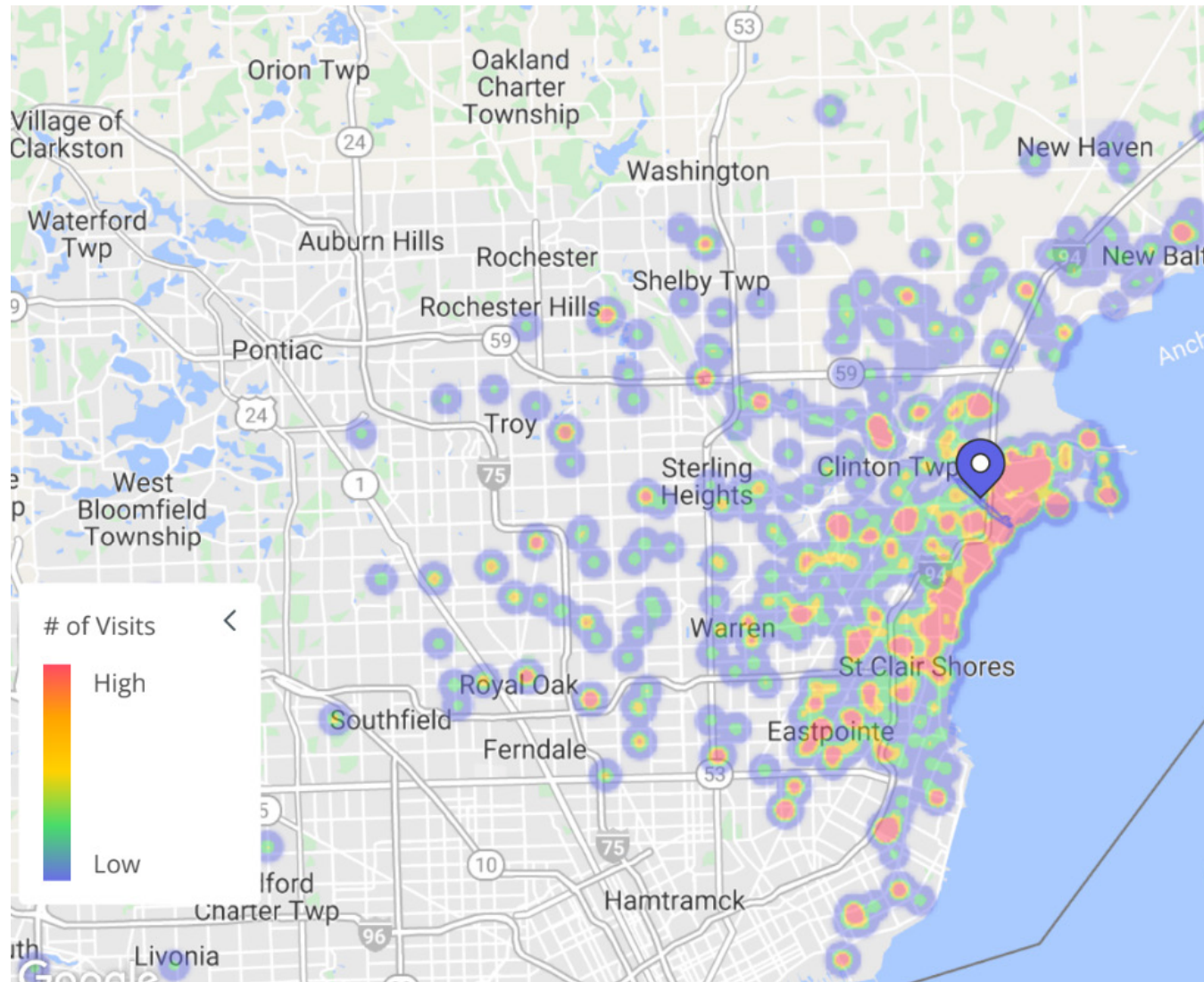
- 25.8k visitors came to visit the Spillway 65.6k times throughout the year
- People stayed for an average of 63 minutes
- Weekly usage peaks in the spring/early summer (fishing)
- Peak usage is in early evening as well as mid-morning
- Usage throughout the week is fairly consistent - Sunday being the greatest



NUMBER OF SPILLWAY VISITS BY TIME OF DAY



CLINTON RIVER SPILLWAY VISITOR ORIGINS



Data from Placer.ai illustrates where people were coming from when they visited the Spillway over a 12-month period from March 2021-March 2022. A high number of people come from the south east section of Macomb County, but visitors travel to the Spillway from a variety of areas throughout Macomb County, Oakland County, and Detroit.

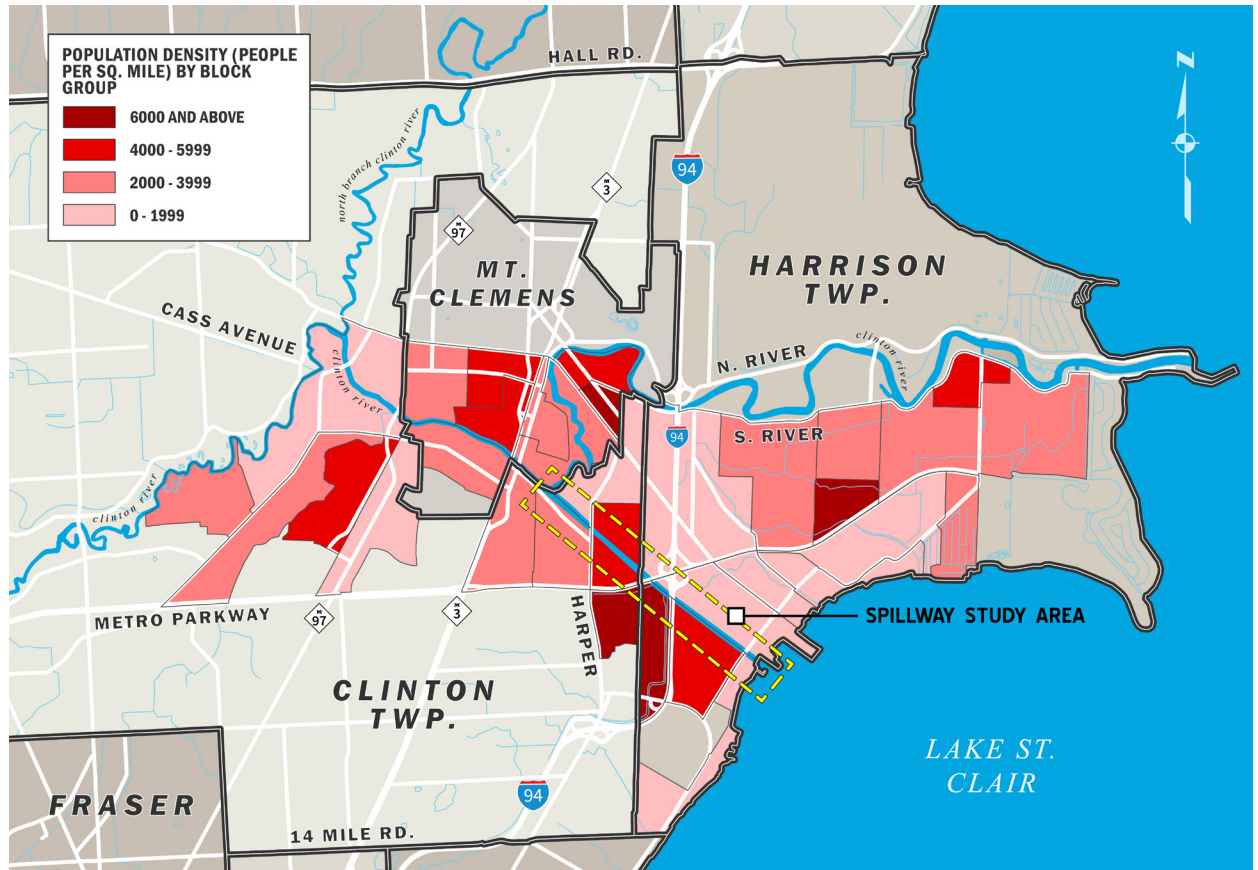
DEMOGRAPHICS + EQUITY

Understanding the demographics of the people that live along and near the Spillway property can assist with measuring equity and identifying underserved communities. There are Census Tracts along/near Spillway that are 'Equity Emphasis Areas' as defined

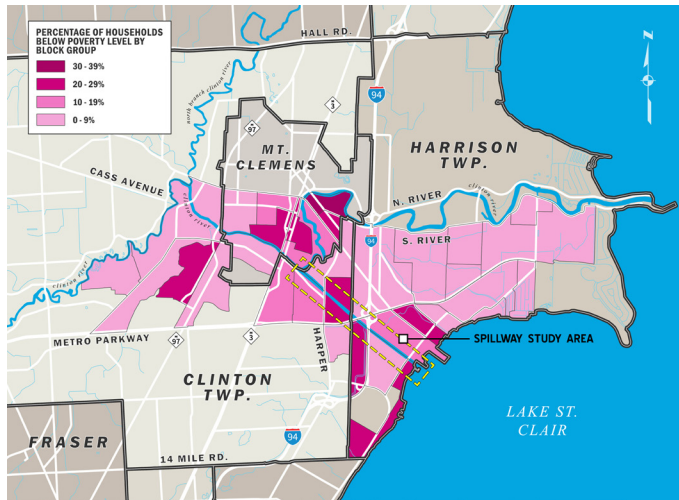
by SEMCOG where there are concentrations of various vulnerable groups. Block Group data (ESRI and American Community Survey) was utilized to further understand the make up of residents in the Spillway area and assist in planning discussions.

DENSITY

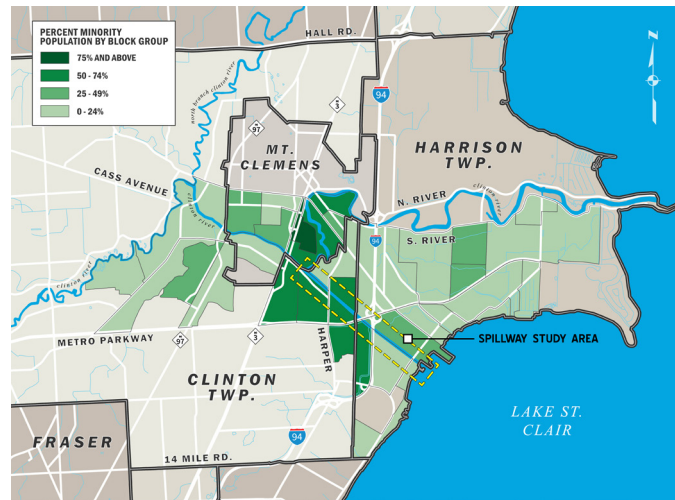
The greatest density of people along the Spillway Study Area is in the Block Group south of Metropolitan Parkway, between I-94 and Harper. This study area has considerably more people per square mile when compared to the County as a whole (1,848)



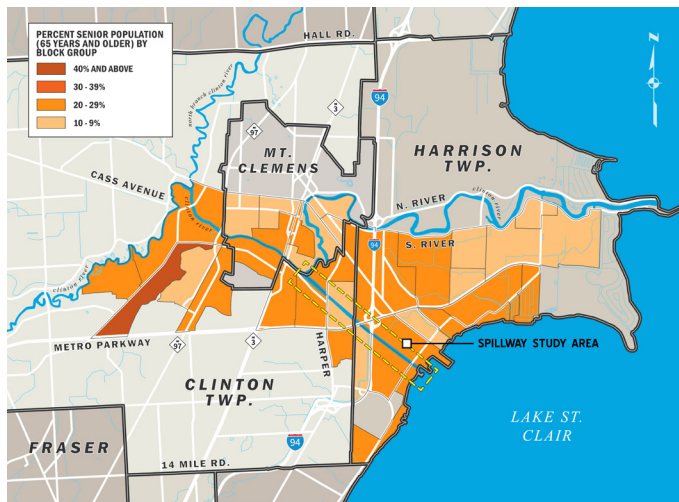
POVERTY



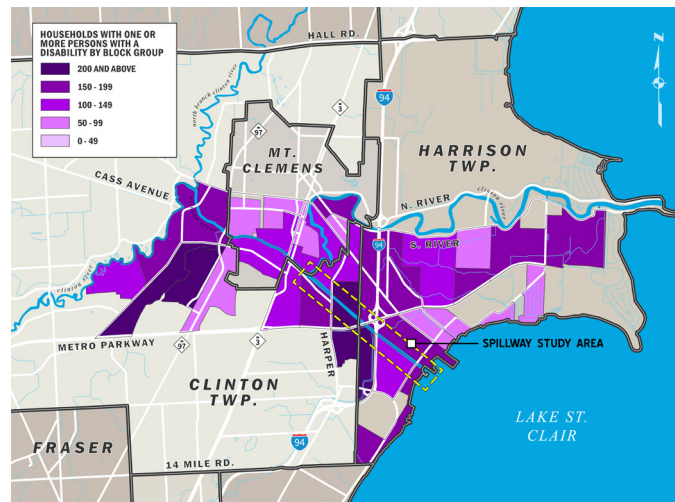
MINORITY



SENIORS



DISABILITY



LIVING IN POVERTY

The darkest pink areas have the greatest percentage (20%+) of households living below the poverty level and include several of the neighborhoods that abut the Spillway in all 3 communities. For comparison, 10% of households in the County as a whole live below the poverty line.

MINORITY POPULATION

Several of the neighborhoods that abut the Spillway in all 3 communities include 50% or greater minority population. For comparison, approximately 75% of people living in Macomb County as a whole are white.

SENIOR POPULATION

There are a significant number of people within close proximity to the Spillway that are 65 years or older. In comparison, 18% of the population in Macomb County is over the age of 65.

LIVING WITH A DISABILITY

The neighborhoods north and south of the Spillway between Harper and I-94 include a fair amount (200+) of households with one or more people living with a disability. In comparison, 28% of households in Macomb County as a whole have one or more people with a disability.

PROCESS + ENGAGEMENT



A multi-agency Stakeholder Committee worked together to guide the creation of the long-term Spillway Vision

The primary goals of this study are to work together to develop a long-term vision for the Spillway property that ensures the integrity of the Spillway is maintained in order to provide **flood control** while seeking opportunities to address **social equity** and **quality of life**, **improve water quality, habitat**, and **increase public use and enjoyment**.

The process of developing a long-term vision for the Spillway was completed over an approximately 9-month time period and led by Macomb County with funding from SEMCOG, Mt. Clemens, Clinton Township, and Harrison Township. This document is intended to serve as a guide and tool for the various agencies to continue to move forward on improvements to the Spillway corridor in a coordinated manner.

STAKEHOLDER COMMITTEE

A Stakeholder Committee was assembled to assist in guiding the development of the long-term vision for the Clinton River Spillway. The Committee included a broad cross-section of elected officials and staff from a variety of agencies. The Committee members met 3 times during the development of the concept plan in 2022 to discuss concerns and desires, and provide feedback on the process and draft vision. In addition, the County had several meetings and discussions with officials and staff from Harrison Township, Clinton Township, and Mt. Clemens to discuss specifics that impact each agency and their residents.

STUDY TIMELINE

Site Walk + Existing Conditions
December 2021

Stakeholder Committee Mtg #1
February 2022

Mtgs with Impacted Organizations
March - July 2022

Online Public Survey (465 responses)
May 2022

Stakeholder Committee Mtg #2
June 2022

Outreach Events
August 2022

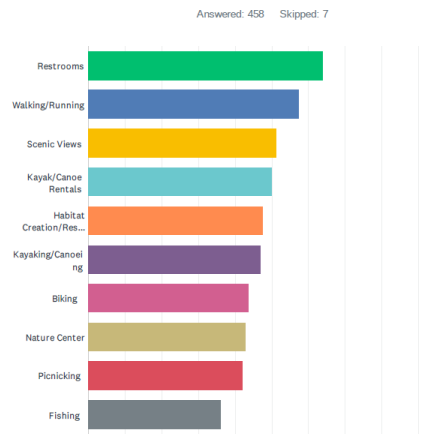
Stakeholder Committee Mtg #3
October 2022

PUBLIC SURVEY

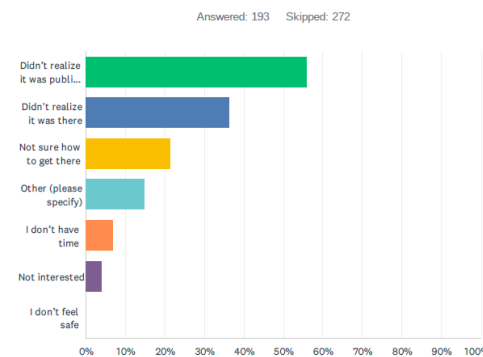
Macomb County and the Stakeholder Committee released an online survey in May 2022 to gather public input related to the Clinton River Spillway to help inform the concept plan. The survey was advertised via press release, social media platforms, and yard signs placed along the Spillway with a QR code link. Over 465 surveys were completed with 37% from residents of Clinton Township, 21% from Harrison Township, 10.5% from Mt. Clemens, and nearly 30% from people that live in other Macomb County communities.

- 31% of respondents had never been to the Spillway while 23% visit 1-3 times per year
- For those that had never been to the Spillway, most didn't realize it was public property, didn't know it was there and/or aren't sure how to get there
- 62% of those that have visited the Spillway arrived by car with 46% using their bike and 34% have walked
- Top 4 activities respondents do on the property are walking, biking, bird watching, fishing. Other activities mentioned include dog walking, kayaking
- Top 5 items respondents indicated interest in along the Spillway include restrooms, walking/running, scenic views, kayak/canoe rentals and habitat restoration. Other items include disc golf, tables/benches, drinking fountains, pickleball courts, level the path, more natural areas, boat access, and a home for the Harrison Twp Library

Q8 Below are some ideas we've heard people might be interested in doing or seeing along the Spillway property. Check the ones you'd like to see further explored by our team.



Q3 If you've never been to the Spillway property, which of the following best describes why? (check all that apply)



The availability of the online survey was publicized on a number of social media pages managed by Macomb County as well as the local communities. In addition, a press release was developed and yard signs with QR code were placed along the Spillway Trail to encourage feedback.



Macomb County Planning & Economic Development
 May 25 at 8:22 AM
 Don't miss out on this important opportunity to make your voice heard on future land use around the Clinton River Spillway!



Make Macomb Your Home
 May 25 at 8:18 AM
 Only a few days left to complete this survey!
 Think your community needs more parks, trails and other fun recreational opportunities? Make your voice heard! Macomb County has launched a new survey to gather public input on future land use near the Clinton River Spillway. Now through May 31, take the 5 minute

Macomb County had a tent at events in August 2022 to share a draft vision for the Spillway and gather input and feedback.



OUTREACH EVENTS

Once a draft Vision graphic for the Spillway property was developed, Macomb County staff made it available at 2 events in August 2022 to share ideas for the property and solicit feedback. The 2 events were the Touch-A-Truck event held at Harrison Townships Tucker Senior Center (August 6, 2022) and the Shadyside Park Spray Fountain grand opening event (August 19, 2022). In addition to a table size illustration of the draft Vision, participants were asked ‘What Would Bring You Back to the Spillway?’, and they were also asked to place sticker dots on the precedent images that they liked the most (numbers on images on next page indicate total number of ‘likes’. Red stars indicate highest number of ‘likes’).

What Would Bring You Back to the Spillway?

- keep nature
- food and drink vendors would be cool
- name it the Clinton River Spillway Recreation Area
- love parking ideas off of Harper
- kayak launches
- educational boats
- love connection to Neil Reid school
- better signage so people know about it
- improve parking areas so more inviting
- reservable, shaded area for 50-100 people
- bathrooms
- nature center and educational boats
- winery
- need a venue you can rent, bring own food/drinks for parties, showers, reunions
- benches, picnic tables around splash pad and more trees at Shadyside
- barrier from Gratiot at Shadyside
- golf/driving range
- walk out piers/docks for fishing

Most Liked Precedent Images (denoted with red stars on next page)

- kayak/canoe
- playground
- fishing/viewing platform
- educational boat
- tridge bridge
- biking trails
- fox/wildlife/nature
- painted underpass



Place Dot Stickers on Things You'd **LOVE** to See or Do Along the Spillway



BRANDING + SIGNAGE



ART



HABITAT PROTECTION + RESTORATION

ACTIVE + PASSIVE RECREATION

TRAILS + CONNECTIVITY



Participants were asked to place sticker dots on precedent images that they liked the most. Numbers on images indicate total number of 'likes'. Red stars indicate highest number of 'likes'.

SPILLWAY VISION

The long-term vision for the Clinton River Spillway property is to establish it as a regional destination and 'Gateway to the Great Lakes' - ensuring that the integrity of the Spillway is maintained in order to provide flood control while seeking opportunities to address social equity and quality of life, improve water quality and habitat, and increase public use and enjoyment.

The graphics and illustrations on the following pages capture a long-term vision for the public Spillway property. While maintaining the Spillway function as a flood control system remains at the forefront, several additional goals and concepts arose during the development of this Master Plan. Precedent images are included for inspiration and illustrative purposes.

Habitat Protection + Restoration

Considerable effort in recent years has been focused on creating and restoring habitat along the Clinton River Spillway. The Spillway Vision looks to build upon these efforts by:

- seeking opportunities for additional shoreline habitat creation and stabilization including increasing habitat for various waterfowl, wood for fish habitat, bank toe restoration to reduce erosion, boulder clusters and hibernacula for snakes and erosion control, turtle logs, etc
- partnering with federal, state and local environmental agencies to continue to study the condition of the Spillway and adjacent environs
- designing passive and active recreation opportunities that balance public access with environmental protection and stormwater management at the forefront
- managing invasive species and utilizing native species when planting
- creating a fish passage and kayak bypass of the existing Spillway Weir on the northside of the Spillway property including a small viewing area to sit and watch the activity

Create Connections

The Spillway is at the intersection of several existing and proposed regional non-motorized corridors including The Great Lakes Way, Freedom Trail along Metropolitan Parkway, and Gratiot Avenue. The existing Spillway Trail provides connections to these destinations as well as nearby neighborhoods. The Spillway Vision looks to:

- improve the condition of the existing trails
- build additional regional trails (asphalt) and bridges along the Spillway property in order to create a more extensive system on both the north and south sides of the water as well as to downtown Mt. Clemens, George George Park, Metro Beach, Lake St. Clair, and the numerous schools, parks, businesses and neighborhoods nearby
- connect Shadyside, the north side of the Spillway, and the Wellington Crescent area together via a 3-pronged “Tridge” with a Great Lakes Observation Tower and creative/interactive lighting
- create a network of more informal footpaths (crushed stone) to provide access to quieter areas for reflection and wildlife viewing while also providing important connections to adjacent and nearby parks and neighborhoods
- explore the potential for an elevated boardwalk as a destination within the wooded area of Shadyside Park and connect into Sleepy Hollow
- elevate the design and safety of road crossings for pedestrians and bicyclists - particularly at Jefferson Avenue, Harper Avenue, and Gratiot Avenue
- ensure coordination amongst various agencies during planning and design of public and private projects in the vicinity of the Spillway so that connectivity to/from the Spillway is at the forefront of discussions

Based on the results of site visits, meetings with stakeholders, and public feedback, several overarching themes developed to guide the development of the vision. These key themes should remain at the forefront of discussions as implementation progresses.

KEY THEMES

- Sustainable**
- Equitable**
- Partnerships**
- Flood Control**
- Safety**

In addition, several objectives resonated throughout the process that guided the development of the Spillway Vision.

OBJECTIVES

- Create Connections**
- Increase Awareness + Use**
- Increase Access to Water**
- Improve Habitat + Water Quality**
- Create Spaces to Gather and Play**
- Activate the Space**
- Improve Aesthetics**
- Maintain Natural Feel**



SUSTAINABLE • EQUITABLE • PARTN

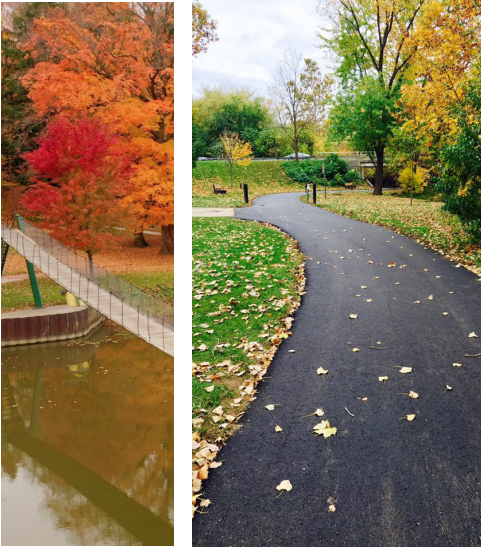


CONNECTIONS • HABITAT • RE

ERSHIPS • FLOOD CONTROL • SAFE



CREATION • EDUCATION • ART





Increase Passive + Active Recreation

One of the primary goals for the Spillway property is to increase the number of people that use and enjoy the public land by offering and encouraging a variety of activities that attract people of all ages and abilities. The Spillway Vision looks to:

- establish a connected and looping network of trails for biking, walking, running, and snow shoeing in order to connect people to/from the trails, the Spillway, and Lake St. Clair
- provide formal and informal locations for fishing and wildlife viewing
- add 3 universally accessible canoe/kayak launches (Tucker, between I94/Harper, and at Wellington Crescent)
- consider the addition of disc golf on the north side of the Spillway between Union Lake and Harper
- establish a 'central' gathering space (Central Park) on the southside of the Spillway between Harper and Metropolitan Parkway including parking, restrooms, playground, picnic pavilions, fishing, trails and connected walkways, an area for small scale performances, open lawn for playing, seating, and shade
- improve access to the Spillway along Wellington Crescent Road with the addition of parking, restrooms, open lawn for art fairs or small scale events, as well as a small plaza space for gathering and access to a potential future Great Lakes Educational Boat Launch
- explore the opportunity to have the Spillway be home to a shallow-bottom Great Lakes Educational Boat that could take small groups up and down the Spillway and into Lake St. Clair and educate about the Great Lakes and surrounding wildlife and environment
- seek partners and continue to discuss the potential for a Regional Nature Center and Aquarium to be located at Shadyside Park (additional details on following pages in Mt. Clemens section of report)

Awareness + Education via branding + signage

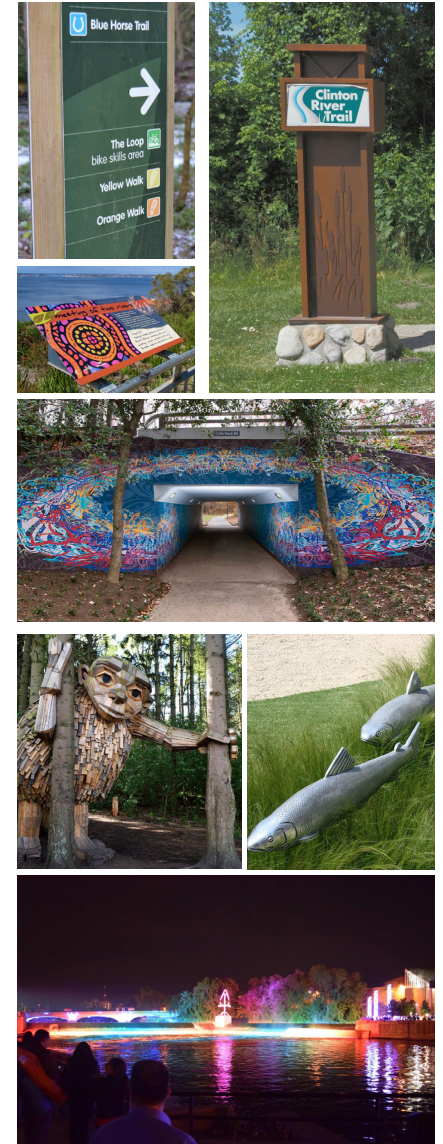
- develop a 'brand' for the Clinton River Spillway that can be used on signage, social media, websites, brochures, etc., to raise the level of awareness how to access and how to use the public asset
- design a signage and wayfinding package that will assist in raising awareness of the Spillway and assist people with understanding where they can park, walk, fish, ride their bike, kayak/canoe, picnic, etc.
- incorporate interpretive signs along the Spillway property to educate visitors on the topics such as history of the Spillway, flood control, habitat restoration, invasive species, etc

Integrate **Art**

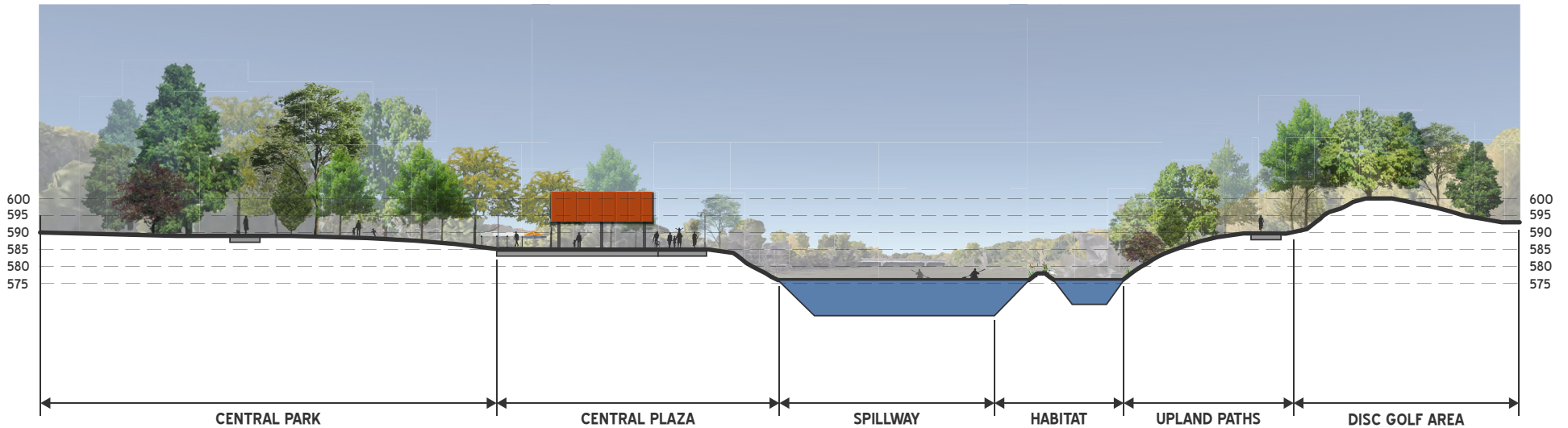
- consider public art (temporary and permanent) in all Spillway improvements to inspire, add interest, and improve aesthetics
- incorporate art that reflects, elevates, and interprets the natural environment
- partner with various entities and institutions such as the Anton Art Center, DIA, etc. to review Spillway improvement plans, commission artists, and realize funding opportunities
- work with MDOT and the Department of Roads to incorporate art onto the walls of the I94 and Metropolitan Parkway trail underpasses
- integrate creative lighting as an art installation

Coordinate **Operations + Management**

- establish a Joint Advisory Committee that meets regularly throughout the year in order to maintain momentum, advance ideas, discuss priorities, and coordinate capital improvements and programming
- partner with stakeholders and agencies to implement the long-term vision over time and in a coordinated manner including the Spillway Drainage Board, Macomb County, Department of Roads, Harrison Township, Clinton Township, Mt. Clemens, Huron Clinton Metroparks, and the Clinton River Watershed Council



CLINTON RIVER Spillway VISION CROSS SECTION | Looking Upstream (west) at 'Central Park'



Regional trail network on both sides of the Spillway providing connections to other major destinations in the area



Open lawn areas for playing, gathering, and programs



Gathering space for small performances and events

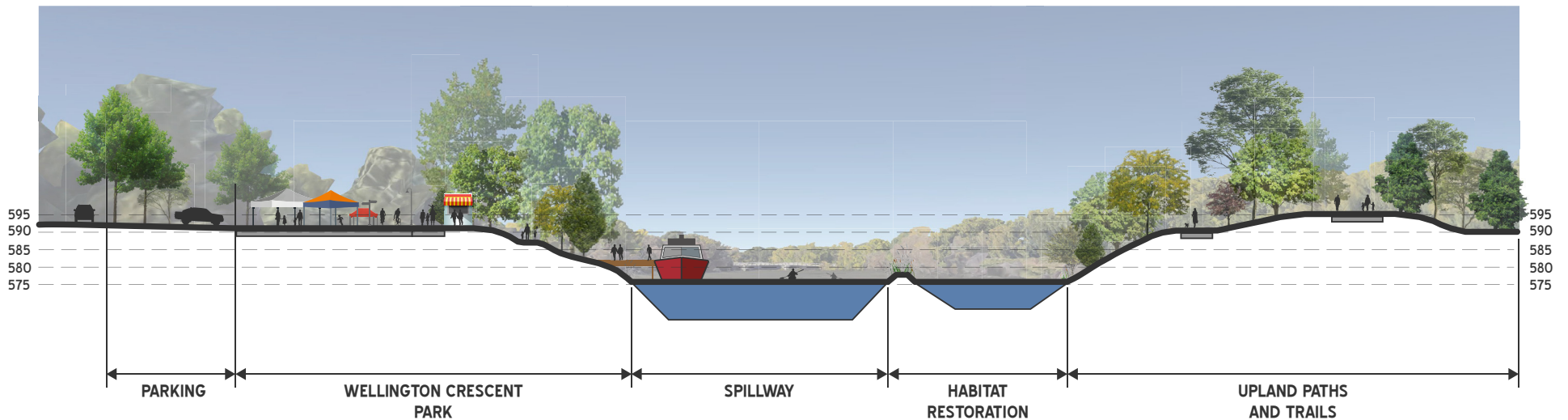


Universally accessible kayak/canoe launch incorporated into Clinton River Water Trail



Disc golf as well as connecting trails and paths

CLINTON RIVER Spillway VISION CROSS SECTION | Looking Upstream (west) at Wellington Crescent Plaza and Educational Boat Dock



PARKING

WELLINGTON CRESCENT
PARK

SPILLWAY

HABITAT
RESTORATION

UPLAND PATHS
AND TRAILS



Parking areas incorporating green stormwater infrastructure



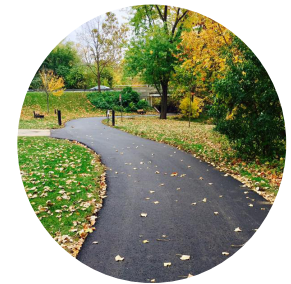
Open lawn areas for a variety of events and festivals as well as small gathering plaza with restrooms



Great Lakes Educational Boat dock



Additional habitat restoration, pools, shoreline stabilization, habitat creation, invasive species control, informal fishing access and wildlife viewing



Regional trail network on both sides of the Spillway providing connections to other major destinations in the area

VISION + PRIORITIES BY AGENCY

Macomb County, Harrison Township, Clinton Township, and the City of Mt. Clemens are key agencies not only involved in the development of a long-term vision for the Spillway, but in the advancement of the vision into implementation. Details of the long-term vision and priority action items for each of these agencies is documented in this section of the study document.

MACOMB COUNTY



A number of Macomb County Departments participated in the development of the long-term vision for the Spillway property and will be essential in continuing the discussion, coordinating partners, seeking funding, implementing projects, programming, etc. Key priorities for the next several years for Macomb County include:

- Take a facilitator role in the **establishment of a Joint Advisory Committee** (driven by communities) that will work closely with the Spillway Drainage Board to coordinate implementation, management, and maintenance efforts associated with the long-term Spillway Vision.
- Support the Spillway Drainage Board and Joint Advisory Committee in **applying for funding** to advance the Spillway Vision.
- **Present the Spillway Vision** to various Macomb County Departments in order to ensure awareness, coordination, and opportunities to partner.
- **Incorporate the Spillway Vision** into other on-going and related Macomb County efforts including the county-wide Greenway Plan, Trail Plan, and Water Trail plans.
- Encourage and support Harrison Township, Clinton Township, and Mt. Clemens to incorporate the Spillway Vision into their **local plans and documents**.
- Coordinate with the Department of Roads and MDOT for **road crossing improvements** at Jefferson Avenue, Union Lake, Harper Avenue, Wellington Crescent, and Gratiot Avenue to ensure pedestrians and cyclists are prioritized.
- Actively **advocate** for Spillway Vision projects with various local, regional, state, and federal agencies.
- In partnership with the Spillway Drainage Board and Joint Advisory Committee, **initiate near-term projects** that will raise awareness of the Spillway and increase usership including:
 - create a **marketing campaign** that can be used by all partners to elevate the awareness that the Spillway property is public, where it is, how it can be accessed, what activities can be done throughout the year, and what improvements are planned.
 - develop **branding/environmental wayfinding graphics** for the Spillway and seek funding to **install an initial phase of signs** to increase awareness and use of the Spillway.
 - seek partners such as the Anton Art Center to discuss **art installations** along the Spillway including improving the aesthetics of the locations where the existing trail passes beneath I-94 and Metropolitan Parkway as well as at the Shadyside Park bridge.



HARRISON TOWNSHIP

There are a number of near-term and longer-term priorities for Harrison Township to continue to focus on and advance in cooperation with the Spillway Board and Joint Advisory Committee. These are described in no particular order.

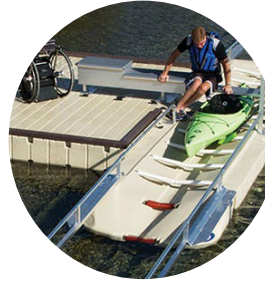
- Incorporate the Spillway Vision into Harrison **Township plans and documents** and share the Vision with other Harrison Township staff, Boards, and Commissions.
- Actively **participate in a Joint Advisory Committee** to coordinate and advance discussions related to improvements, operations, management, maintenance and programming along the Spillway.
- **Rebuild the existing Spillway Trail** as it is aging and in poor condition. Include improvements at the Jefferson Avenue crossing to prioritize the safety of pedestrians and bicyclists using the Spillway Trail system.
- Secure funding to construct a **pedestrian bridge over the Spillway** just west of Jefferson Avenue as part of the Great Lakes Way and Spillway Trail system.
- Coordinate with Macomb County, Clinton Township, and Mt. Clemens to develop and install **wayfinding signage** to existing facilities.
- Secure funding to **improve access to the water** while protecting the shoreline and add a **restroom to the Jefferson Spillway Park/Pier**.
- Work with the Joint Advisory Committee to incorporate a **universally accessible canoe/kayak launch** along the Spillway in proximity to the Tucker Senior Center property.
- Establish the Tucker Center property as a **primary gathering space** and access point along the Spillway.
- Support the Spillway Drainage Board and Macomb County in future efforts to incorporate additional **habitat restoration and creation** projects along both the north and south sides of the Spillway.
- In joint efforts with other Spillway stakeholders, **seek funding to design and construct** additional trails, footpaths, and connections on both the north and south sides of the Spillway including the potential for a bridge over the Roseville-Clinton-Harrison Relief Drain, a small parking area near Jefferson Avenue, as well as informal fishing areas, wildlife viewing, and places of respite.

HARRISON TOWNSHIP | Clinton River Spillway Vision

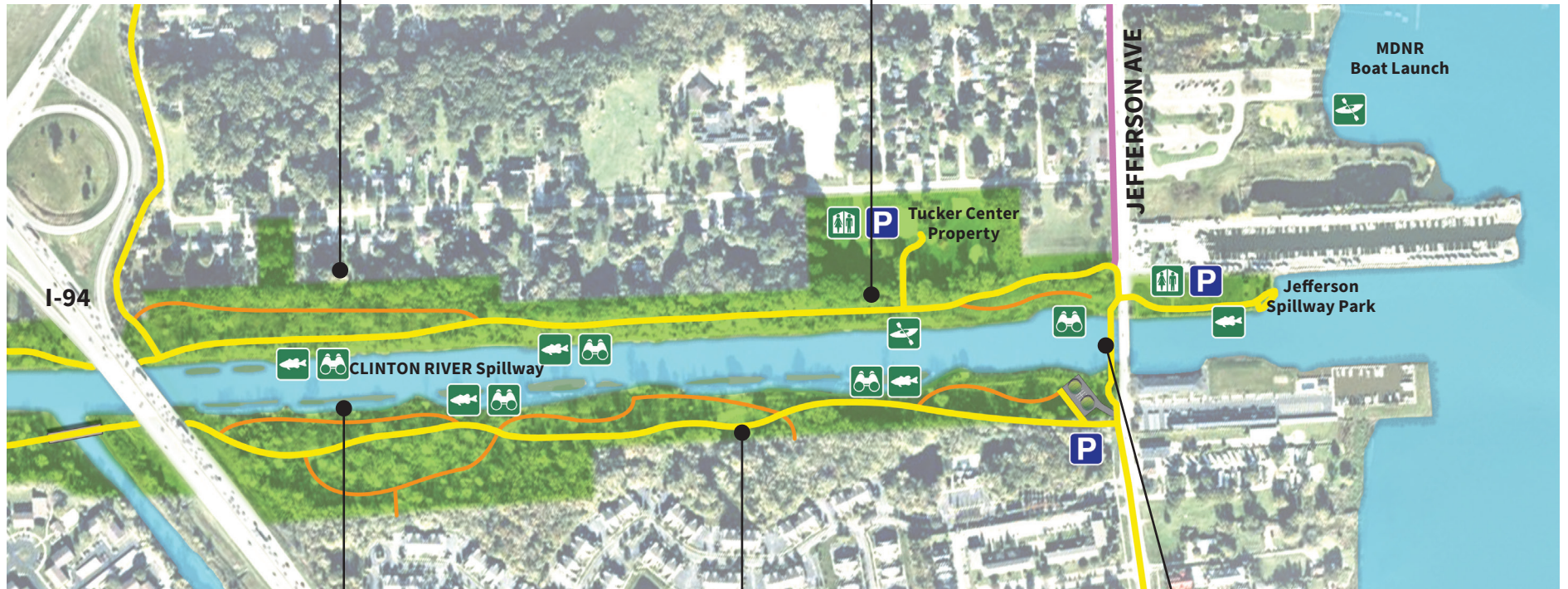
Informal, crushed stone footpaths providing access for wildlife viewing and connections to nearby parks and developments



Universally accessible kayak/canoe launch near Tucker Center property and incorporated into Clinton River Water Trail



- Existing/Proposed Regional Trail
- Existing/Proposed Footpath
- Existing/Proposed Connector



Additional habitat restoration, pools, shoreline stabilization, habitat creation, invasive species control, informal fishing access and wildlife viewing



Regional trail network on both sides of the Spillway providing connections to other major destinations in the area



Pedestrian bridge over Spillway, west of Jefferson Avenue



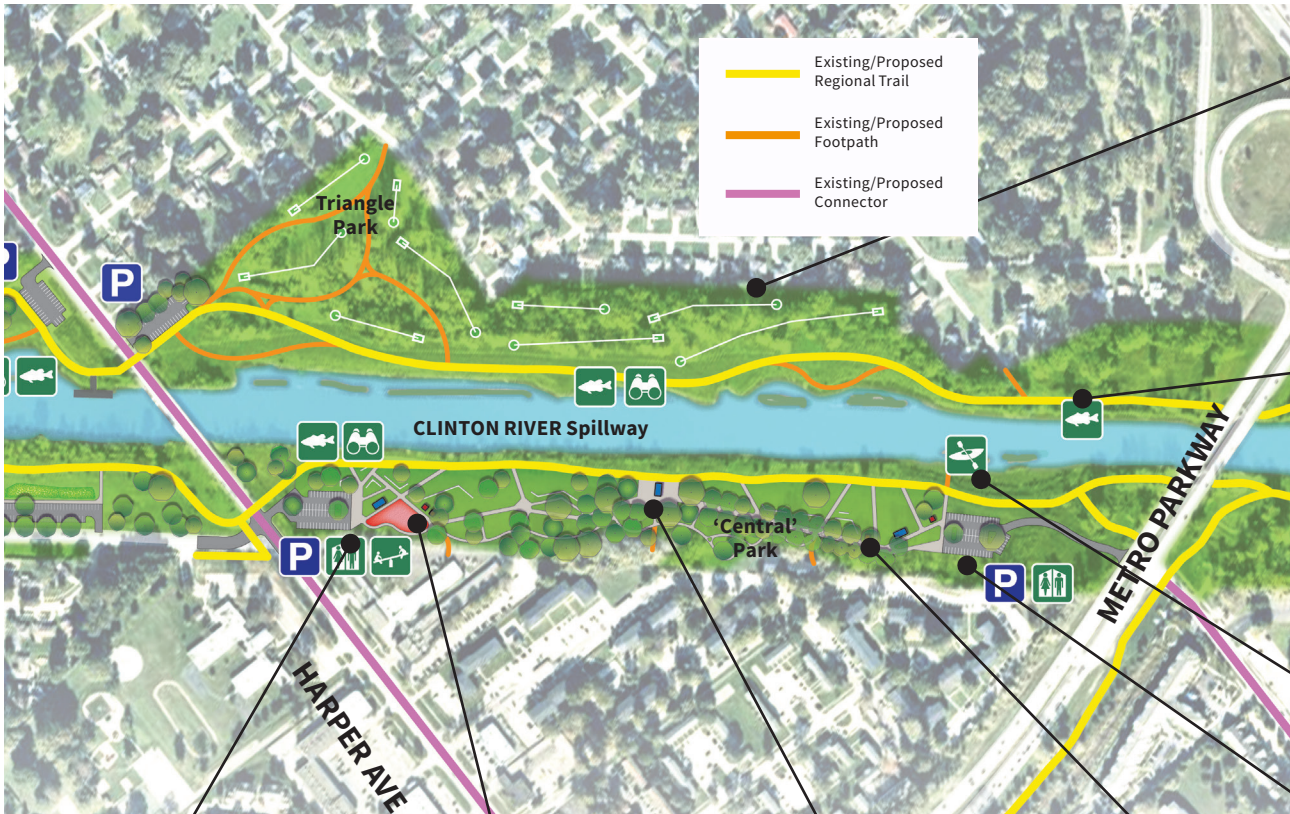


CLINTON TOWNSHIP | Metro Parkway to Harper Avenue

There are a number of near-term and longer-term priorities for Clinton Township to continue to focus on and advance in cooperation with the Spillway Board and Joint Advisory Committee. These are described in no particular order.

- Incorporate the Spillway Vision into Clinton **Township plans and documents** and share the Vision with other Clinton Township staff, Boards, and Commissions.
- Coordinate with Macomb County, Harrison Township, and Mt. Clemens to develop and install **wayfinding signage** to existing facilities.
- Actively **participate in a Joint Advisory Committee** to coordinate and advance discussions related to improvements, operations, management, maintenance and programming along the Spillway.
- Partner with local **disc golf** design specialists to determine feasibility of installation on the north side of the Spillway between Harper and Metropolitan Parkway, including the Township's Triangle Park. Incorporate safe crossing of Harper Avenue and restroom facility for disc golf and existing fishing pier.
- **Rebuild the existing Spillway Trail and connections to neighborhoods** as it is aging and in poor condition. Include improvements at the Harper Avenue crossings to prioritize the safety of pedestrians and bicyclists using the Spillway Trail system.
- Support the Spillway Drainage Board and Macomb County in future efforts to incorporate additional **habitat restoration and creation** projects along both the north and south sides of the Spillway.
- Secure funding to construct a **restroom by the existing fishing pier** on the west side of Harper Avenue.
- In joint efforts with other Spillway stakeholders, **seek funding to design and construct** additional trails, footpaths, and connections on both the north and south sides of the Spillway including road crossing improvements, small parking areas along the Spillway, informal fishing areas, wildlife viewing, and places of respite.
- Seek funding to design and construct a **signature 'central park'** along the Spillway on the southern portion of property between Harper and Metropolitan Parkway. The space is envisioned to be a central gathering space and destination with parking, restrooms, playground, several pavilions/shelters of various sizes, pathways, seating areas, access to the water, wildlife viewing, open lawn, trees, small outdoor performance space, universally accessible kayak/canoe launch, observation docks, recreation circuit system, etc.

CLINTON TOWNSHIP | Clinton River Spillway Vision



Disc golf, connecting trails and paths, and small parking area on east side of Harper



Informal access to the water for wildlife viewing, fishing and respite



Universally accessible kayak/canoe launch incorporated into Clinton River Water Trail



A signature playground space near parking, restrooms and pavilion



Several pavilions and shelters of various sizes to allow for gathering



Gathering space for small performances and events



Open lawn areas for playing, gathering, and programs



Parking areas incorporating green stormwater management





CLINTON TOWNSHIP | Harper Avenue to Gratiot Avenue

There are a number of near-term and longer-term priorities for Clinton Township to continue to focus on and advance in cooperation with the Spillway Board and Joint Advisory Committee. These are described in no particular order.

- Improved pedestrian connection between the Spillway and **Neil Reid Park and Neil Reid School**.
- Install **universal kayak/canoe launches** at variety of areas from weir to Metropolitan Parkway.
- Work with Macomb County, the City of Mt. Clemens, and others to advocate for high quality **pedestrian and bicycle facilities along Gratiot Avenue** as a primary regional corridor.
- Coordinate and partner with Mt. Clemens and McLaren Hospital to implement high quality **pedestrian and bicycle facilities along Harrington Street** to provide a connection between the Spillway and the nearby Clinton Township trail network and park properties.
- Continue discussions with partners to incorporate a **kayak bypass chute and fish passage** to allow for movement and access up and down the Spillway and around the existing Spillway Weir. This is envisioned to be for small boats only (no motors) and to include an area for sitting/viewing.
- Secure funding to construct a **parking area, restroom, and universally accessible kayak launch off Wellington Crescent, on the south side of the Spillway** in order to provide improved access to the entire Spillway. It is envisioned, with the addition of parking and restrooms on the southside of the Spillway, the Wellington Crescent green space could host a number of events including semi-permanent artisan market.
- **Seek funding to design and construct** additional trails, footpaths, and connections on both the north and south sides of the Spillway including informal fishing areas, wildlife viewing, and places of respite.
- Continue discussions with partners to incorporate a **'Tridge' bridge (or other type of bridge system) with Great Lakes Observation Tower** that would connect to the regional trail network and other nearby amenities such as additional parking along Wellington Crescent, a proposed Great Lakes Educational Boat Dock, as well as the proposed kayak/canoe chute and fish passage.
- Continue discussions with partners regarding a **Regional Nature Center and Aquarium at Shadyside Park** that would be a regional destination within one of the most densely populated urban areas of Macomb County.
- In partnership with a regional nature center, incorporate a **Great Lakes Educational Boat Dock** with a small gathering plaza and restrooms on the southside of the Spillway to provide opportunities for people to get out onto the Spillway and into Lake St. Clair to experience and learn about a variety of topics.

CLINTON TOWNSHIP | Clinton River Spillway Vision

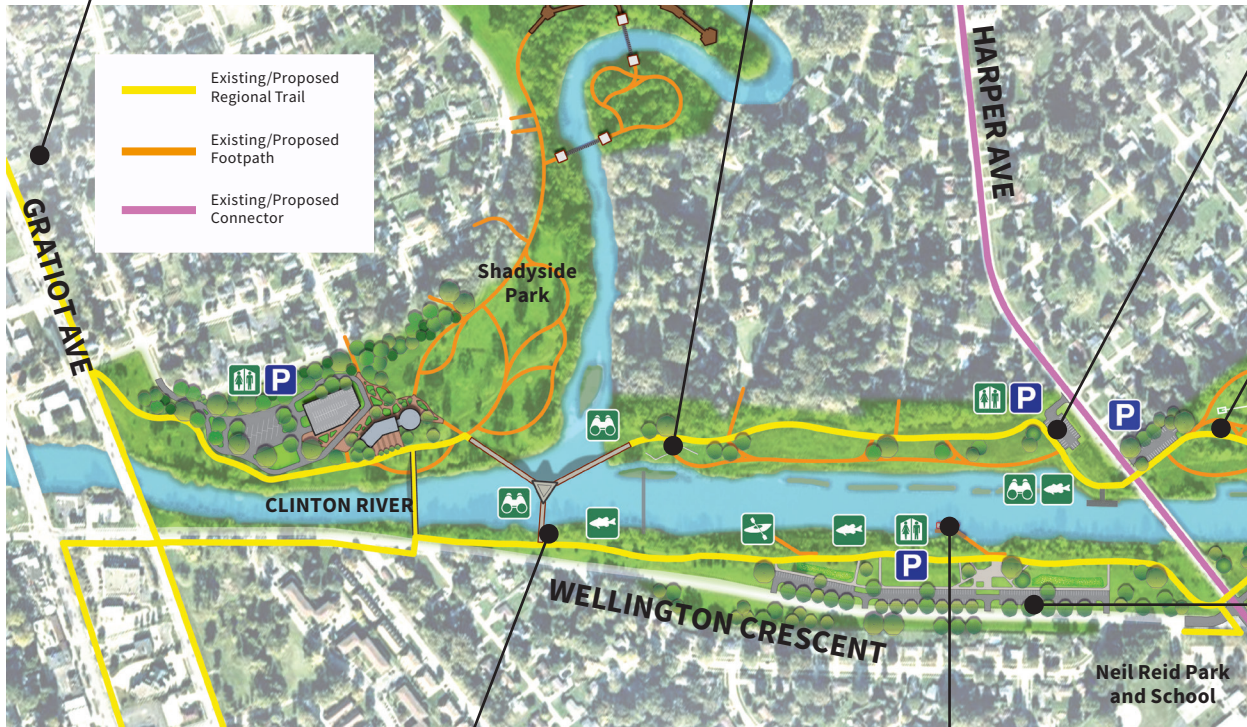
Regional trail network along Gratiot providing connections to other major destinations in the area



Kayak bypass and fish passage to allow movement around Spillway weir. Include seating/viewing area.



Restroom at existing Harper parking lot to service existing fishing pier and potential disc golf course



Regional trail network on both sides of the Spillway providing connections to other major destinations in the area



Parking areas incorporating green stormwater infrastructure as well as restroom, open lawn areas for a variety of events, festivals, artisan market



Three-pronged 'Tridge' bridge with Great Lakes Observation Tower creatively lit



Great Lakes Educational Boat dock and small gathering plaza with restrooms





CITY OF MT. CLEMENS

There are a number of near-term and longer-term priorities for the City of Mt Clemens to continue to focus on and advance in cooperation with the Spillway Board and Joint Advisory Committee. These are described in no particular order.

- Incorporate the Spillway Vision into **Mt. Clemens plans and documents** and share the Vision with other City staff, Boards, and Commissions.
- Actively **participate in a Joint Advisory Committee** to coordinate and advance discussions related to improvements, operations, management, maintenance and programming along the Spillway.
- In joint efforts with other Spillway stakeholders, **seek funding to design and construct** additional trails, footpaths, and connections on both the north and south sides of the Spillway including informal fishing areas, wildlife viewing, and places of respite.
- Coordinate with Macomb County, Harrison Township, and Clinton Township to develop and install **wayfinding signage** to existing facilities.
- Support the Spillway Drainage Board and Macomb County in future efforts to incorporate additional **habitat restoration and creation** projects along both the north and south sides of the Spillway.
- Work with Macomb County, Clinton Township, and others to advocate for high quality **pedestrian and bicycle facilities along Gratiot Avenue** as a primary regional corridor.
- Coordinate and partner with Clinton Township and McLaren Hospital to implement high quality **pedestrian and bicycle facilities along Harrington Street** to provide a connection between the Spillway and the nearby Clinton Township trail network and park properties.
- Seek funding for **discovery and exploration pathways** that may include elevated walkways, ziplines, rope course, swinging bridges, etc.
- Continue discussions with partners to incorporate a **'Tridge' bridge (or other type of bridge system) with Great Lakes Observation Tower** that would connect to the regional trail network and other nearby amenities such as additional parking along Wellington Crescent, a proposed Great Lakes Educational Boat Dock, as well as the proposed kayak/canoe chute and fish passage.
- Continue to discuss opportunities to develop a **Regional Nature Center and Aquarium at Shadyside Park** that could incorporate:
 - 30,000 square foot building
 - Circulation, car, and bus parking
 - Indoor/outdoor programming, gathering, and event spaces
 - Green infrastructure
 - Neighborhood connections and buffers
 - Habitat restoration and creation

CITY OF MT CLEMENS | Clinton River Spillway Vision



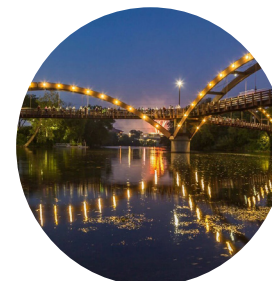
Discovery and exploration pathways, ziplines, rope course, swinging bridges, etc.



Access to water and nature-based programming for all ages



Regional Great Lakes Nature Center with gathering spaces, trails, habitat restoration, and indoor and outdoor programming



Three-pronged 'Tridge' bridge with Great Lakes Observation Tower creatively lit

GREAT LAKES NATURE CENTER + AQUARIUM | Precedent Images



GREAT LAKES NATURE CENTER + AQUARIUM VISION



KEY FEATURES

- ① REGIONAL NATURE CENTER & AQUARIUM - 30,000 SF 2-STORY
- ② PARKING DECK, APPROX. 120 SPACES
- ③ BUS PARKING AREA, 16 SPACES
- ④ TRIDGE AND GREAT LAKES OBSERVATION TOWER
- ⑤ WELLINGTON PARKING, 200 SPACES + RESTROOMS AND UNIVERSAL KAYAK/CANOE LAUNCH
- ⑥ KAYAK/CANOE CHUTE AND FISH PASSAGE
- ⑦ PEDESTRIAN PLAZA
- ⑧ GREEN STORMWATER MANAGEMENT
- ⑨ WOODED PATH
- ⑩ ELEVATED BOARDWALK
- ⑪ PEDESTRIAN CABLE SUSPENSION BRIDGE
- ⑫ NEIGHBORHOOD CONNECTION
- ⑬ OPEN SPACE
- ⑭ HABITAT RESTORATION, POLLINATOR GARDENS, VERNAL WETLAND
- ⑮ REGIONAL TRAIL CONNECTION
- ⑯ RIVERSIDE ACCESS, BASKING LOGS, HABITAT STRUCTURES
- ⑰ EXISTING SPLASH PAD
- ⑱ WEIR SEATING/VIEWING AREA
- ⑲ GREAT LAKES EDUCATIONAL BOAT DOCK

