



Candice S. Miller

Public Works Commissioner
Macomb County

October 24, 2022

FOR IMMEDIATE RELEASE

Contact: Norb Franz, Macomb County Public Works communications manager
586-201-5732 norb.franz@macombgov.org

Restoration of eroded drain banks along I-94 completed

Emergency construction to restore rapidly eroding drain banks precariously close to Interstate 94 in Macomb County has been completed.

This past summer, the erosion accelerated rapidly and in some spots reached approximately 25 yards from the westbound lanes of I-94 near 13 Mile and Little Mack roads.

“It was shocking to see that several feet of the eastern banks had fallen away in a matter of weeks. We became very concerned that the erosion would become much worse because it had already reached the sand used as backfill when I-94 was constructed in that area in the 1960s,” Macomb County Public Works Commissioner Candice S. Miller said. “We hired a contractor to perform emergency restoration because we weren’t going to wait for an infrastructure disaster -- like the collapse of a freeway that would have taken several months and several million dollars to repair, let alone the traffic nightmare and detours for tens of thousands of drivers each day.”

The construction contractor, L.J. Construction, mobilized quickly and on Aug. 22 began working south of 13 Mile, between Gratiot Avenue and Little Mack – the first of three locations where work was conducted in the Rohrbeck Extension Drain. The activity there included replacement of a culvert just a few yards from westbound I-94 and 70 feet of pipe including the outfall that had broken off and tumbled to the bottom of the open channel. The bottom of the channel that carries stormwater and snow melt was straightened by excavating portions of the western bank and using that dirt to build up the eroded east side of the drain. Both sides were re-graded, and hundreds of limestone boulders were placed on lengthy stretches of geotextile fabric to armor the banks and protect them from new erosion caused by rising or strong flow, particularly after heavy rain events. Higher up the banks and above the boulders – also known as rip rap – a special mixture of grass seed and fertilizer were spread onto top soil and covered with straw mulch blankets. The mixture includes grasses with deeper roots so that if the water level rises in the drain and sits there a while, the stable vegetation will survive and won’t erode, plus vegetation for butterflies. The contractor then worked in a curved portion of the Rohrbeck Extension Drain along Erin Street, just north of 13 Mile. Activity included removing debris, minimal excavation and cutting off ends of decades-old corrugated metal pipe that had rotted, and stabilizing the ends with rip rap. Wrapping up the project, work was recently completed on a severely eroded stretch of the east bank of the drain behind the Red Roof Inn property just east of Little Mack, north of 13 Mile. The restoration activity was the same as that performed south of 13 Mile Road behind the Famous Dave’s BBQ and the Extended Stay America Hotel.

ADDRESS: 21777 Dunham Road, Clinton Township, Michigan 48036 • Phone: 586-469-5325 • Fax: 586-469-5933

ENGINEERING • Phone: 586-469-5910 • Fax: 586-469-7693 ♦ **SOIL EROSION** • Phone: 586-469-5327 • Fax 586-307-8264

“With this completed restoration, the difference is like night and day,” Miller said. “When you stand at these spots and see again just how close these banks are to the thousands of cars, semi-trucks and tankers in the westbound lanes, we’re glad that swift action plus excellent work by the construction contractor in quick fashion have prevented much bigger problems.”

Miller credited officials with the City of Roseville and the Michigan Department of Transportation for working together with the county to tackle the emergency.

The entire project cost is expected to total \$200,000 and will be paid using existing drain district funds in Roseville.

The Rohrbeck Extension Drain handles stormwater and snow melt runoff from an approximately 3.7-square-mile area.

PHOTOS:

Rapid erosion last summer in the Rohrbeck Extension Drain in Roseville, as shown here in this August photo south of 13 Mile Road, west of Little Mack, crept perilously close to westbound Interstate 94.

Severe erosion in the Rohrbeck Extension Drain, south of 13 Mile Road, west of Little Mack in Roseville resulted in an emergency construction contract to restore the bank and straighten the drain close to Interstate 94 in Roseville.

Restoration of a stretch of the Rohrbeck Extension Drain, south of 13 Mile Road, west of Little Mack, including boulders to protect the banks from future erosion during heavy flow of stormwater, has been completed.

Erosion as it appeared last summer east of Little Mack, north of 13 Mile Road in Roseville, one of three locations in the Rohrbeck Extension Drive that were part of an emergency construction contract.

Restoration of the banks and straightening of the Rohrbeck Extension Drain, including this stretch east of Little Mack, north of 13 Mile Road, has been completed.

Boulders placed recently around a pipe outlet to the Rohrbeck Extension Drain along Erin Street in Roseville.

VIDEO: Macomb County Public Works Commissioner Candice S. Miller discusses the completion of an emergency construction project to halt erosion in the Rohrbeck Extension Drain, very close to I-94 in Roseville. <https://youtu.be/ZOVDxhkAbZQ>



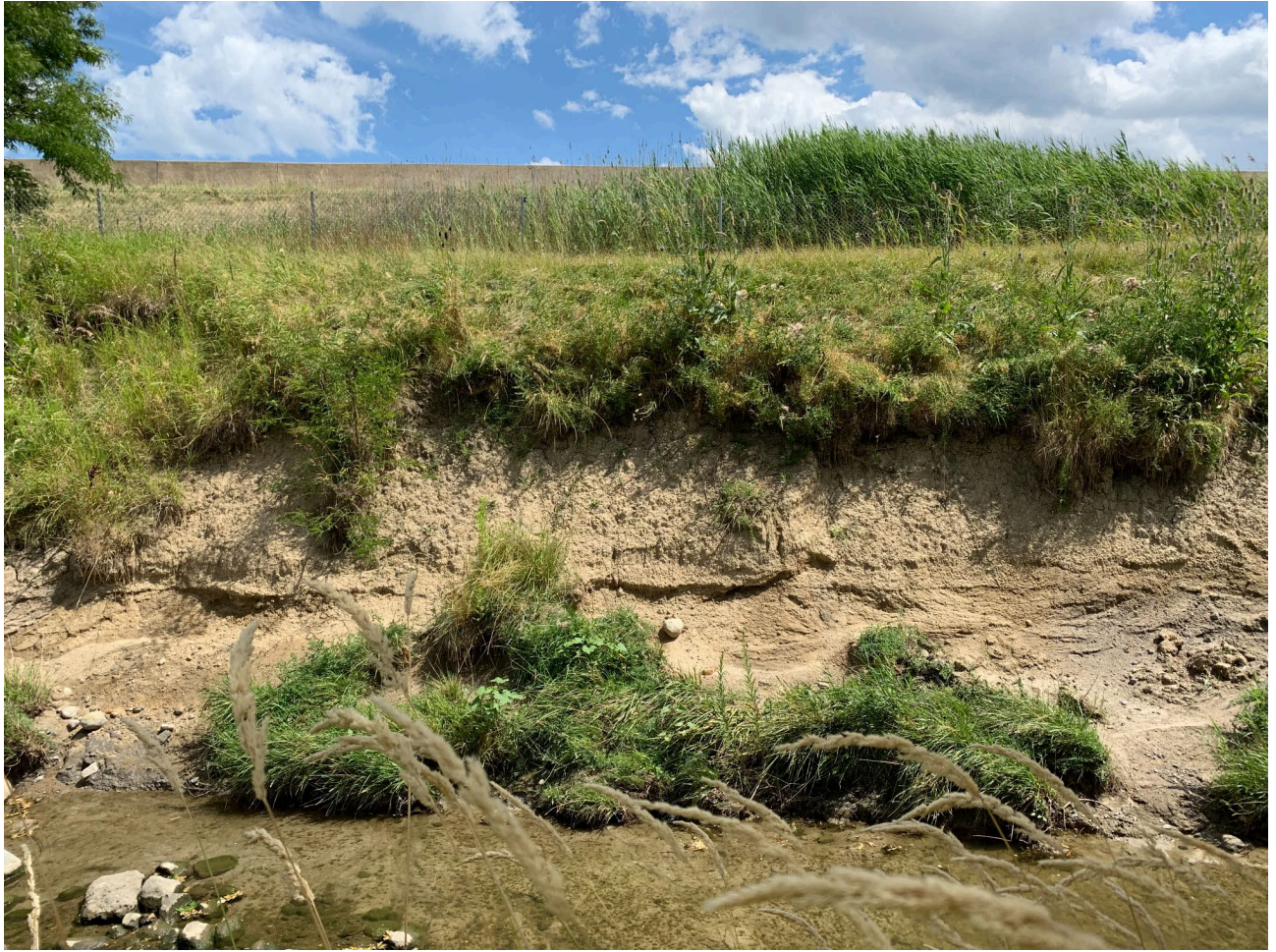
ADDRESS: 21777 Dunham Road, Clinton Township, Michigan 48036 • Phone: 586-469-5325 • Fax: 586-469-5933
ENGINEERING • Phone: 586-469-5910 • Fax: 586-469-7693 ♦ **SOIL EROSION** • Phone: 586-469-5327 • Fax 586-307-8264



ADDRESS: 21777 Dunham Road, Clinton Township, Michigan 48036 • Phone: 586-469-5325 • Fax: 586-469-5933
ENGINEERING • Phone: 586-469-5910 • Fax: 586-469-7693 ♦ **SOIL EROSION** • Phone: 586-469-5327 • Fax 586-307-8264



ADDRESS: 21777 Dunham Road, Clinton Township, Michigan 48036 • Phone: 586-469-5325 • Fax: 586-469-5933
ENGINEERING • Phone: 586-469-5910 • Fax: 586-469-7693 ♦ **SOIL EROSION** • Phone: 586-469-5327 • Fax 586-307-8264



ADDRESS: 21777 Dunham Road, Clinton Township, Michigan 48036 • Phone: 586-469-5325 • Fax: 586-469-5933
ENGINEERING • Phone: 586-469-5910 • Fax: 586-469-7693 ♦ **SOIL EROSION** • Phone: 586-469-5327 • Fax 586-307-8264





ADDRESS: 21777 Dunham Road, Clinton Township, Michigan 48036 • Phone: 586-469-5325 • Fax: 586-469-5933
ENGINEERING • Phone: 586-469-5910 • Fax: 586-469-7693 ♦ **SOIL EROSION** • Phone: 586-469-5327 • Fax 586-307-8264