

Gregg
Miller
Nash
Suma
Wiley

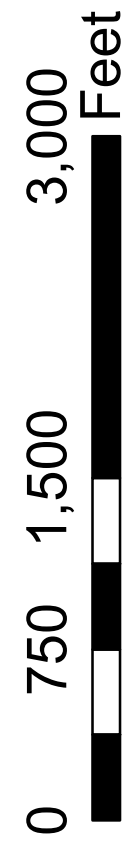
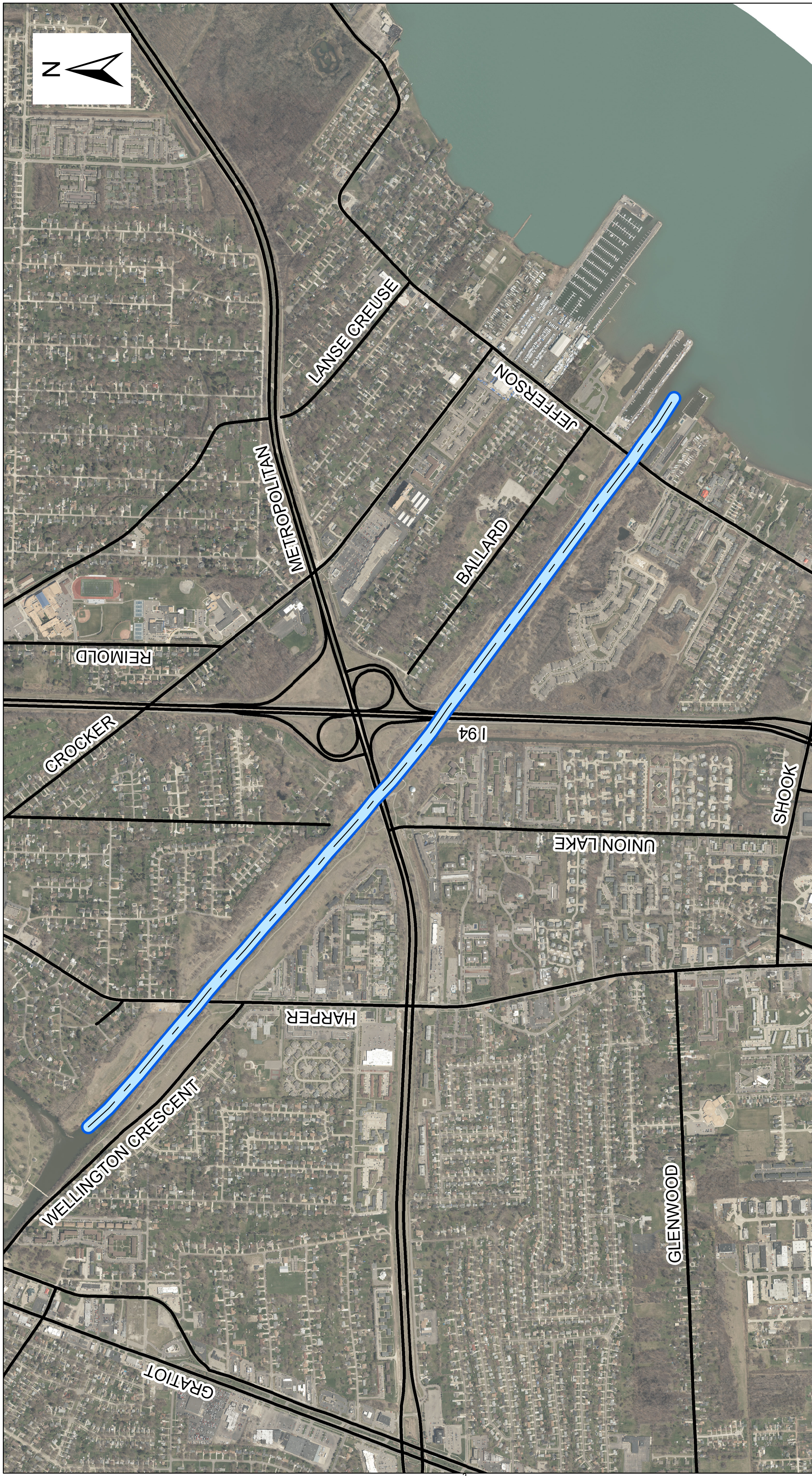
CLINTON RIVER SPILLWAY
INTER-COUNTY DRAINAGE BOARD
NOVEMBER 09, 2022
10:00 A.M.
AGENDA

**NOTE: THIS MEETING WILL BE HELD IN PERSON WITH TELECONFERENCE OPTION
FOR PUBLIC**

**Call in Number: 1-657-238-8494
Access Code: 262 945 850**

	Page
1. Call of meeting to order and roll call	
2. Approval of Agenda	
3. Approval of Minutes of meeting of April 26, 2022	3
4. Public Participation	
5. Spillway Visioning Presentation & Discussion - Jeff Bednar/Amanda Oparka	7
6. EGLE State High Water Infrastructure Grant Discussion - Jeff Bednar/Jamie Burton	43
7. 2023 Board Meeting Dates	47
8. Consideration for approval of invoices (see attached)	48
9. Financial Update – Bruce Manning	49
10. Other Business	
11. Adjourn	

CLINTON RIVER SPILLWAY LAPEER, MACOMB, OAKLAND, & ST CLAIR COUNTIES



Drain Length (Feet/Miles):
11,281.34 / 2.14

Legend

- Open Channel
- Ditch
 - Pond

A meeting of the Inter-County Drainage Board for the **CLINTON RIVER SPILLWAY DRAIN** was held in the Office of the Macomb County Public Works Commissioner, 21777 Dunham, Clinton Township, Michigan on April 26, 2022.

PRESENT: Michael Gregg, Chairman
Michigan Department of Agriculture & Rural Development

Candice S. Miller, Secretary
Macomb County Public Works Commissioner

Jim Nash, Member
Oakland County Water Resources Commissioner

Joe Suma, Member
Lapeer County Drain Commissioner

Robert Wiley, Member
St. Clair County Drain Commissioner

ALSO PRESENT: Brian Baker, Chief Deputy; Jeff Bednar P.E., Environmental Resources Manager; Stephen Downing, Construction and Maintenance Manager; Norb Franz, Communications Manager; Bruce Manning, Financial Manager; Pamela Sonnenberg, Administrative Assistant; Sarah Wojdyla, Drain Account Specialist; Steve Korth, P.E., Manager, Office of Oakland County Water Resources Commissioner; Anne Vaara, Chief Deputy, Office of Oakland County Water Resources Commissioner

PRESENT VIA TELECONFERENCE: Daniel Acciavatti, Deputy Macomb County Public Works

The Chairman called the meeting to order at 10:13 a.m.

A motion was made by Mr. Wiley, supported by Mr. Suma to approve the agenda as presented.

Adopted: YEAS: 5
NAYS: 0

The minutes of the meeting of June 22, 2021, were presented. A motion was made by Mr. Nash, supported by Mr. Wiley to approve the minutes as presented.

Adopted: YEAS: 5
NAYS: 0

The meeting was opened to public participation, then closed, there being no comments from the public.

Project updates were presented by Jeff Bednar. The first item presented was the different tree plantings that have occurred since the last meeting. We built a mini berm at Harper where the fishing pier is. We put new trees in last Fall. We also added a gate to the fence for mower access. We also had a very successful tree planting event at the end of the spillway in collaboration with the Detroit Zoo. Ms. Miller reminded the Board that the Zoo paid half.

The second issue is the Master Plan Update. We have completed community outreach. We had good meetings with Harrison Township, Clinton Township and Mt. Clemens. Two of the communities actually met outside of our meeting and presented their ideas to us. They referenced a pop up market along Wellington Crescent in the green space. They are interested in having some kind of boat passage around the weir. There are some interesting ideas to interconnect residents bringing them into Mt. Clemens and into Harrison Township. They will finalize their ideas and bring them back to us.

Mr. Bednar moved on to 5C, Vegetation Removal. We have the Army Corps coming out tomorrow to do an annual inspection. Everyone is welcome to come. It starts at Jefferson Park area working its way to Mt. Clemens.

The Army Corps is talking about what can be done to improve the weir for operational needs. We just discussed this yesterday and will be meeting on a weekly basis. There is no commitment being sought from Macomb County Public Works or the Board yet. The Army Corps reminded Mr. Bednar that they cannot fund anything for recreational navigation and Mr. Bednar stated that it would be for maintenance barges. Mr. Gregg asked if we plan to inflate the weir tomorrow, Mr. Bednar replied with a yes, stating it will work because we had Romeo students out there last week observing and the weir worked.

The last item Mr. Bednar discussed is the problem with residents encroaching onto our property. We have planted specific plants to reduce soil erosion on the property and some of that is being damaged by mowing. We also have a resident who is dumping debris. We put up a sign, then we took some of our log debris to block them from encroaching.

Ms. Miller mentioned the homeless population and how we are constantly cleaning up the areas.

A motion was made by Mr. Wiley, supported by Mr. Suma to receive and file the project updates.

Adopted: YEAS: 5
NAYS: 0

Mr. Downing updated the Board on a new Sinkhole Repair. We have a failed CMP in the area of the weir. The bottom is rotted out and a sinkhole is forming adjacent to the walking path. We don't have a formal recommendation memo as we just received 2 proposals late on Friday. Because it is underneath the walking path, the cost will be shared with Clinton Township. Cortis Bros. price was above \$40,000 and Robert Clancy Contracting's price was \$20,445 and \$5,000 for tree removal. There are standing trees that are dead and need to be removed. We need to get with the contractor to see what Clinton Township's share would be for the bike path repair. Mr. Downing will come back to the Board with a final number, but is looking to get a not to exceed amount approved by the Board today. Mr. Suma asked what the length of pipe is. Mr. Downing told him that it is a 24 inch pipe and the length is 30 linear feet. Mr. Wiley asked if they will put stump kill on the tree stump, and if not, he suggested that they get a quote for that as well. Mr. Bednar replied that they will do that.

A motion was made by Mr. Wiley, supported by Mr. Suma to approve the not to exceed cost from Clancy for \$25,445 plus stump kill, minus the cost share from Clinton Township for the trail repair.

Adopted: YEAS: 5
NAYS: 0

The next item discussed was ownership of the Spillway Parcels. Ms. Miller reminded the Board we used Aloia Law to perform a legal review when the Board sold the 6 acres of property by the Spillway. It took a long time to close the deal because there were questions about the title. Now that we are discussing a master plan, we have asked the attorneys to go through the rest of the spillway property making sure we have a clear title. Ms. Vaara said we should consider reviewing the insurance liability contract with regards to the Master Plan if we plan to let others utilize our property.

Ms. Miller made a motion, supported by Mr. Wiley to authorize a legal review of Spillway parcel ownership by Aloia Law at a not to exceed cost of \$4,000.

Adopted: YEAS: 5
NAYS: 0

The Chairman presented the invoices totaling \$96,686.80 as provided to the Board for review and approval.

A motion was made by Mr. Nash, supported by Mr. Wiley to approve the invoices as presented.

Adopted: YEAS: 5
NAYS: 0

A motion was made by Mr. Wiley, supported by Mr. Suma to receive and file the financial report presented by Mr. Manning.

Adopted: YEAS: 5
NAYS: 0

There being no further business, it was moved by Mr. Suma supported by Mr. Nash that the meeting of the Clinton River Spillway Inter-County Drainage Board be adjourned.

Adopted: YEAS: 5
NAYS: 0

The meeting was adjourned at approximately 10:52 a.m.


Candice S. Miller, Secretary
Clinton River Spillway Inter-County Drainage Board

STATE OF MICHIGAN
COUNTY OF MACOMB

I certify that the foregoing is a true and correct copy of proceedings taken by the Inter-County Drainage Board for the Drainage District shown on the attached set of Minutes, on April 26, 2022. The original of which is on file in the Public Works Commissioner's Office. Public notice of the meeting was given pursuant to Act No. 267, Public Acts of Michigan, 1975, including, in the case

of a special or rescheduled meeting or a meeting secured for more than 36 hours, notice by posting at least 18 hours prior to the time set for the meeting.



Candice S. Miller, Secretary
Clinton River Spillway Inter-County Drainage Board

DATED: 04/26/22

DRAFT
10.10.22

CLINTON RIVER SPILLWAY

Gateway to the Great Lakes

MACOMB COUNTY, MI
2022

CLINTON RIVER
SPILLWAY

INTER-COUNTY
DRAIN BOARD

Working together to develop a long-term vision for the Spillway property that ensures the integrity of the Spillway is maintained in order to provide **flood control** while seeking opportunities to address **social equity** and **quality of life, improve water quality and habitat**, and **increase public use and enjoyment**. This document is intended to serve as a guide and tool for the various agencies to continue to move forward on improvements to the Spillway property in a coordinated manner.

ACKNOWLEDGEMENTS

MANY THANKS TO THE STAKEHOLDER COMMITTEE FOR THEIR INVALUABLE INPUT AND TIME

STAKEHOLDER COMMITTEE

Candice S. Miller, Macomb County Public Works Commissioner
Joe Suma, Lapeer County Drain Commissioner
Anne Vaara, Oakland County Water Resource Commissioners Office
Robert Wiley, St. Clair County Drain Commissioner
Emily Engelmann, Macomb County Public Works
John Crumm, Macomb County Road Commission
Mary Bednar, Clinton Township
Dan O’Leary, Clinton Township
Paul Gielegem, Clinton Township
Laura Kropp, City of Mt. Clemens
Don Johnson, City of Mt. Clemens
Ken Verkest, Harrison Township
Jason Bibby, Huron Clinton Metroparks
Amy McMillan, Huron Clinton Metroparks
Sue Kelsey, Clinton River Watershed Council
Tyler Klifman, SEMCOG

FUNDERS + SUPPORTERS



PROJECT MANAGERS

Amanda Oparka, Macomb County PED
Gerard Santoro, Macomb County PED
Jeff Bednar, Macomb County Public Works
Danielle Devlin, Macomb County Public Works

October 2022

CONTENTS

04		OVERVIEW + PROCESS
16		SPILLWAY VISION
24		VISION + PRIORITIES BY AGENCY

OVERVIEW + PROCESS

The process to develop this document was funded, in part, by the Southeast Michigan Council of Governments (SEMCOG) via their program to fund multi-jurisdictional planning efforts. In 2021, SEMCOG awarded Macomb County Planning and Economic Development with a grant to develop a vision for the 2-mile long, 200 acres of public

property that comprises the Clinton River Spillway in eastern Macomb County. The vision includes ensuring the integrity of the Spillway is maintained in order to provide flood control while seeking opportunities to improve water quality, habitat, and increase public use and enjoyment.

HISTORY + CONTEXT

HISTORY

The Clinton River Spillway was constructed by the US Army Corps of Engineers in the 1950s to provide flood control for Mount Clemens, Clinton Township and Harrison Township. It is a 2 1/2 mile long, 80-foot wide, 15'-30' deep channel that runs in a southeasterly direction from approximately Gratiot Avenue to Lake St. Clair. The Spillway includes a control weir at the upstream end to ensure low-water flow in the natural river channel. The Spillway includes adjacent properties that total approximately 200 acres.

MANAGEMENT

The Clinton River Spillway is managed by an Inter County Drainage Board which is comprised of representatives from the Michigan Department of Agriculture & Rural Development (MDARD), Macomb County, Oakland County, St. Clair County and Lapeer County. Their authority is to maintain and improve the Spillway under the Michigan Drain Code.

The Macomb County Public Works Office is responsible for maintaining the Spillway and adjacent property. Harrison Township, Mt. Clemens, and Clinton Township contract with the Huron Clinton Metroparks to maintain the Spillway Trail. The Spillway is inspected bi-annually by the Corps of Engineers.



There was a long history of severe flooding events prior to the construction of the Spillway in the 1950s.

RECENT YEARS

In the early 1990's, an approximately 3-mile long walking and biking trail was constructed along the Spillway from Jefferson Avenue west to Gratiot Avenue. The trail is owned by the municipalities and maintained by the Huron Clinton Metroparks.

While the construction of the Spillway has been effective in controlling floodwater, it hampered fish passage, invasive plant species flourished, and sediment deposition, downcutting and erosion occurred. In 2011, the Macomb County Public Works Office, on behalf of the Inter-County Drainage Board, received a NOAA-GLRI grant to design habitat improvements on the Clinton River Spillway. In 2014, NOAA and the EPA awarded an additional \$4.0 million to assist with the construction of the environmental restoration project. The ecological enhancements resulted in the creation of 5 off-channel habitats, 12.8-acres of riparian emergent and shrub-scrub wetland habitat, a fishing pier, and 106-acres of invasive species control. The project was designed to increase native species cover, fish spawning and other wildlife diversity, reduce sediment loading, and remove invasive species.



A multi-million dollar environmental restoration and habitat creation project was completed in 2015 creating 5 off-channel habitats, 12+ acres of riparian wetlands, a fishing pier and 106-acres of invasive species removal.

Source: HRC Engineers



CLINTON RIVER SPILLWAY AND SURROUNDS



The Clinton River Spillway is a 2 1/2 mile long, 80-foot wide, 15'-30' deep channel that runs in a southeasterly direction from approximately Gratiot Avenue to Lake St. Clair and includes approximately 200 acres of property in Clinton Township, Mt. Clemens, and Harrison Township.

The red lines illustrate the existing 3-mile long Spillway Trail and the Freedom Trail along Metropolitan Parkway leading to/from Lake St. Clair Metropark. The light blue lines illustrate existing (solid) or proposed (dashed) connecting sidewalks and/or side path systems. The yellow lines illustrate existing SMART bus routes.

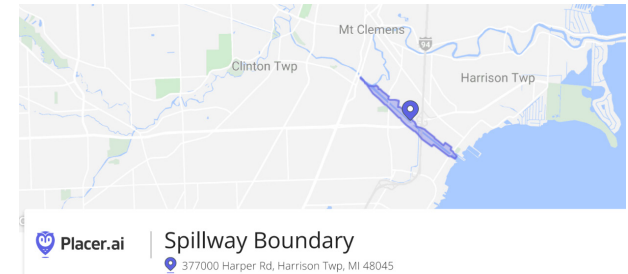
There are currently 4 designated parking areas along the Spillway (all on the north side) including at Jefferson Park and the Tucker Senior Center in Harrison Township, at the Harper Road Fishing Pier in Clinton Township, and at Shadyside Park in Mt. Clemens.

Formal fishing access is at Shadyside Park, the Harper Pier, and Jefferson Park. Canoe/kayaks can currently be launched at Shadyside Park or at the DNR Boat Launch on Lake St. Clair.

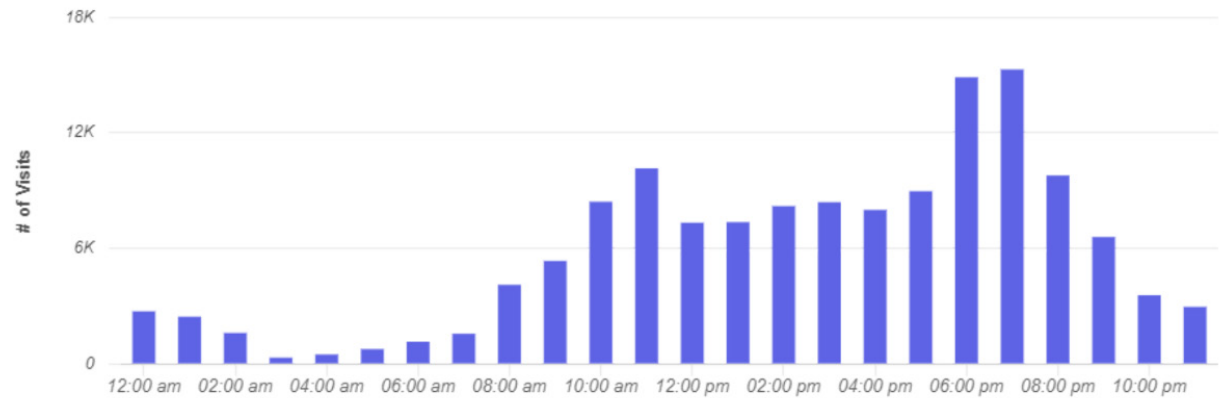
SPILLWAY VISITOR PATTERNS

Macomb County utilizes a tool/program called Placer.ai to better understand number of visitors and use patterns for a variety of destinations. An analysis was run for the Clinton River Spillway property to understand usage patterns over a 12 month period from March 2021 - March 2022. A few highlights include:

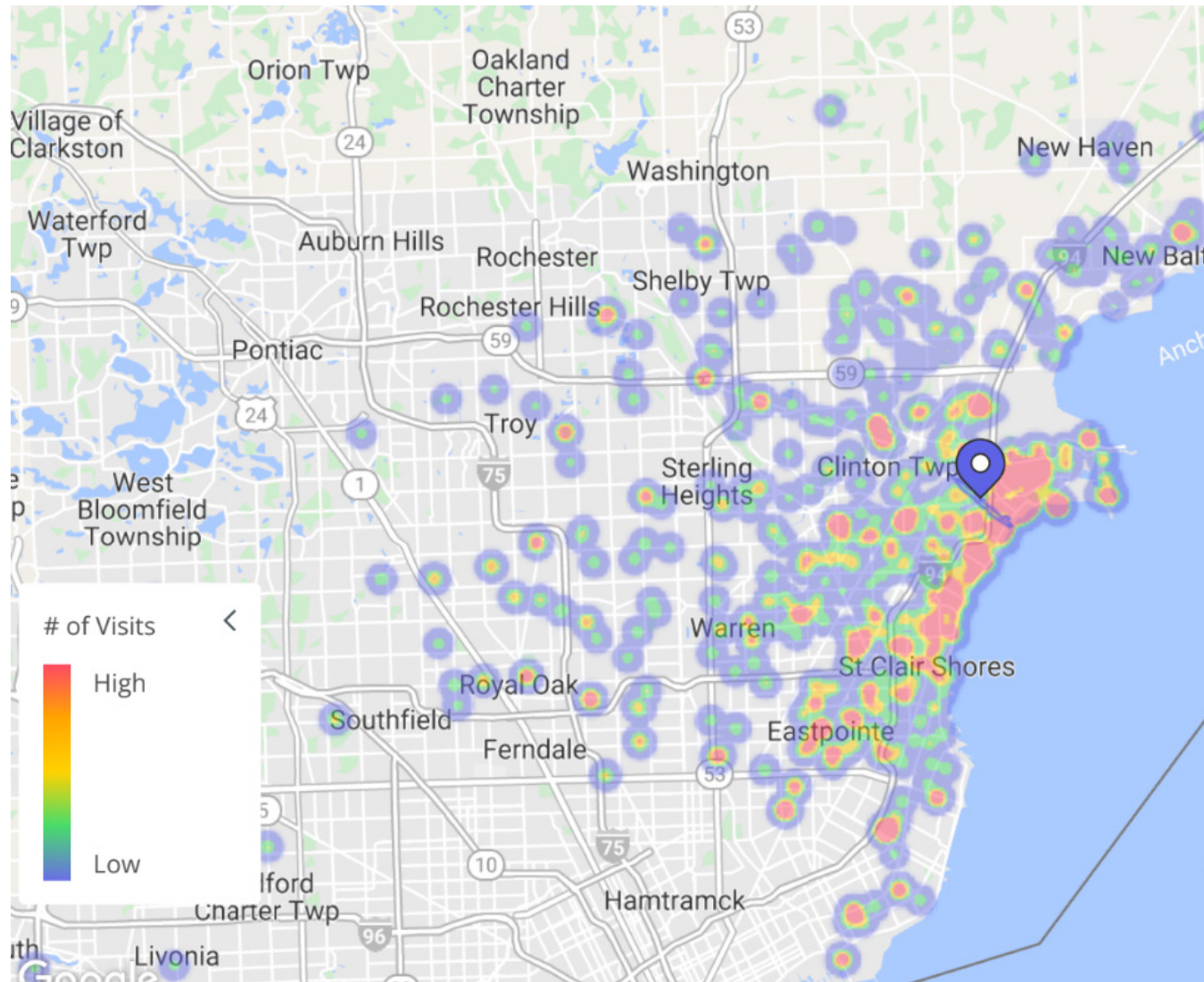
- 25.8k visitors came to visit the Spillway 65.6k times
- People stayed for an average of 63 minutes
- Weekly usage peaks in the spring/early summer (fishing)
- Peak usage is between 6:00 - 8:00pm as well as mid morning
- Usage throughout the week is fairly consistent - Sunday being the greatest



NUMBER OF SPILLWAY VISITS BY TIME OF DAY



CLINTON RIVER SPILLWAY VISITOR ORIGINS



Data from Placer.ai illustrates where people were coming from when they visited the Spillway over a 12-month period from March 2021-March 2022. A high number of people come from the south east section of Macomb County, but visitors travel to the Spillway from a variety of areas throughout Macomb County, Oakland County, and Detroit.

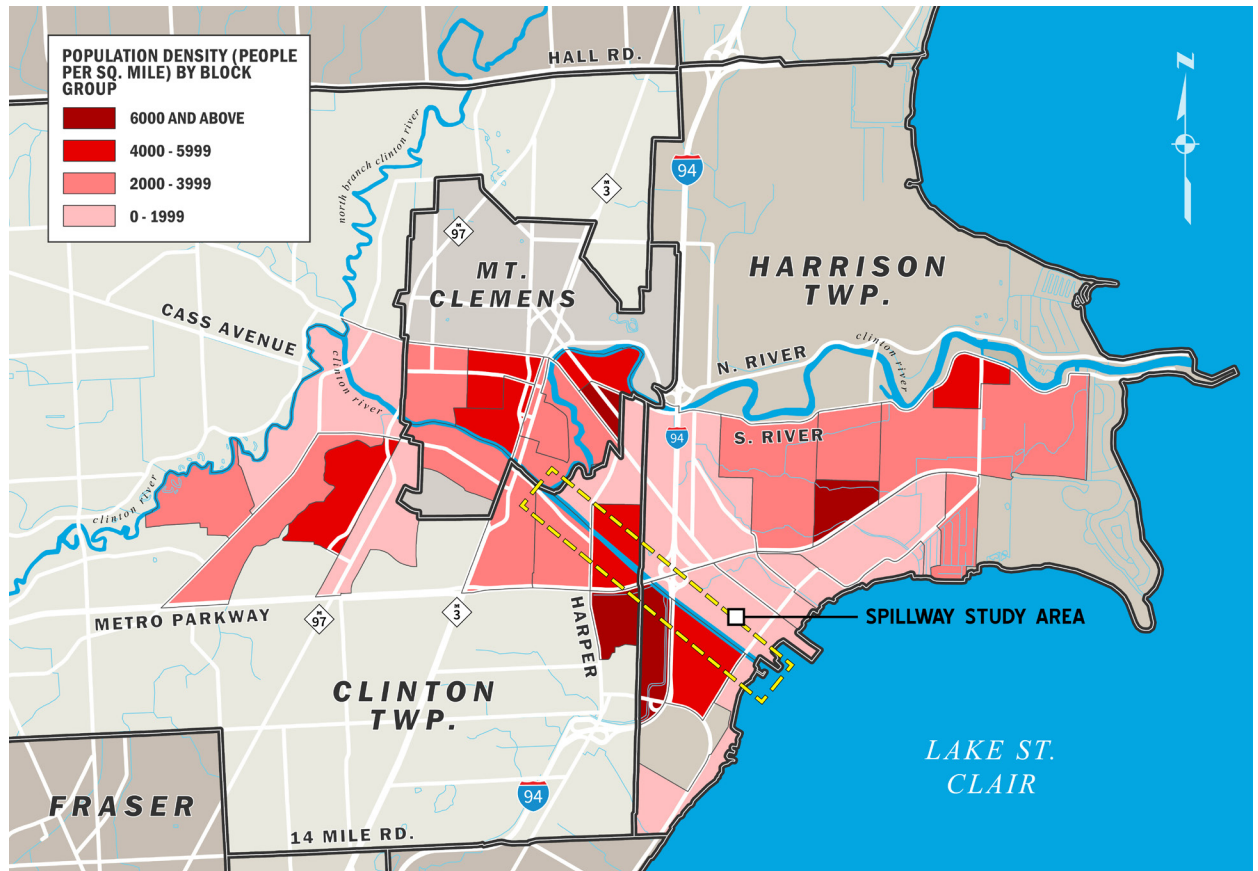
DEMOGRAPHICS + EQUITY

Understanding the demographics of the people that live along and near the Spillway property can assist with measuring equity and identifying underserved communities. There are Census Tracts along/near Spillway that are 'Equity Emphasis Areas' as defined

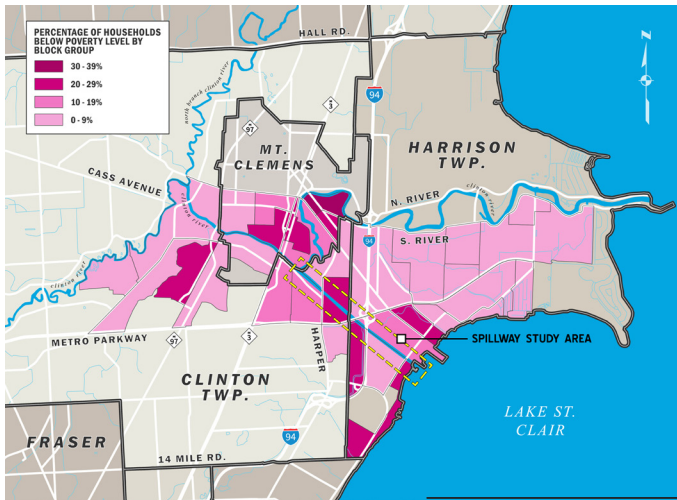
by SEMCOG where there are concentrations of various vulnerable groups. Block Group data (ESRI and American Community Survey) was utilized to further understand the make up of residents in the Spillway area and assist in planning discussions.

DENSITY

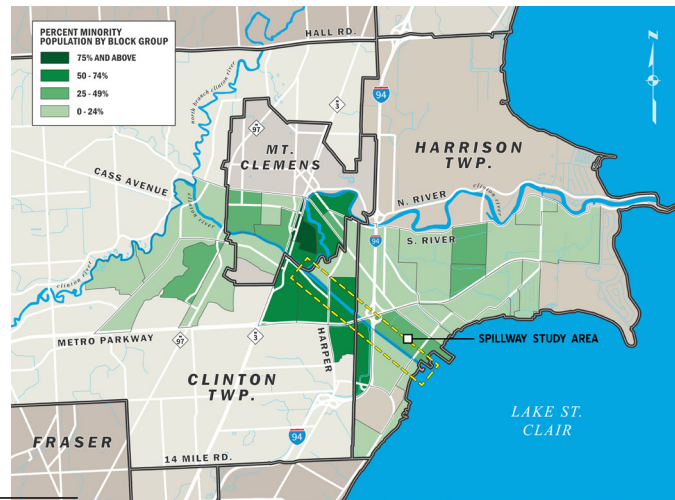
The greatest density of people along the Spillway Study Area is in the Block Group south of Metropolitan Parkway, between I-94 and Harper. This study area has considerably more people per square mile when compared to the County as a whole (1,848)



POVERTY



MINORITY



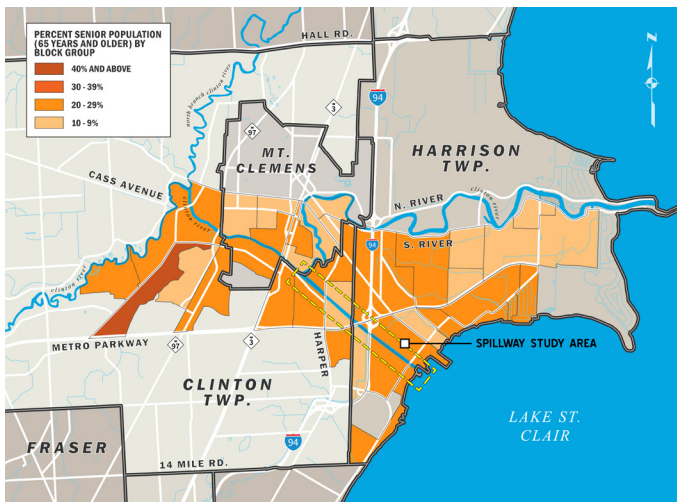
LIVING IN POVERTY

The darkest pink areas have the greatest percentage of households living below the poverty level and include several of the neighborhoods that abut the Spillway. For comparison, 10% of households in the County as a whole live below the poverty line.

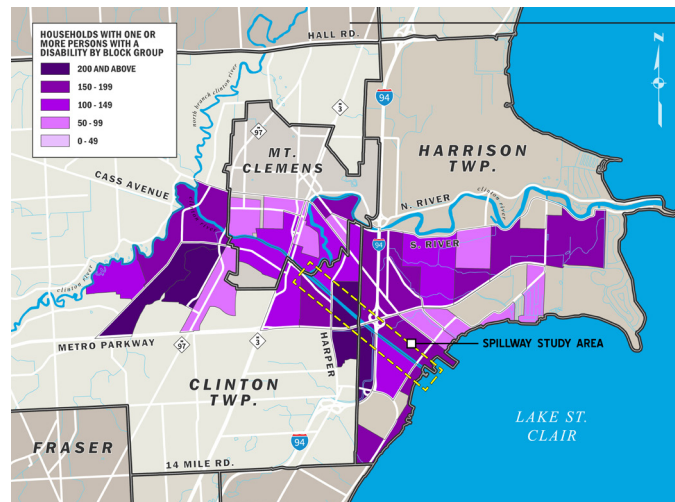
MINORITY POPULATION

At least 75% of those living in the neighborhood just north of Shadyside Park in Mt. Clemens are minorities. For comparison, approximately 75% of those living in Macomb County as a whole are white.

SENIORS



DISABILITY



SENIOR POPULATION

There is a significant number of people within close proximity to the Spillway that are 65 years or older. In comparison, 18% of the population in Macomb County is over the age of 65.

LIVING WITH A DISABILITY

The neighborhoods north and south of the Spillway between Harper and I-94 include a fair amount of households with one or more people living with a disability. In comparison, 28% of households in Macomb County as a whole have one or more people with a disability.

PROCESS + ENGAGEMENT

The primary goals of this study are to work together to develop a long-term vision for the Spillway property that ensures the integrity of the Spillway is maintained in order to provide **flood control** while seeking opportunities to address **social equity** and **quality of life**, **improve water quality, habitat**, and **increase public use and enjoyment**.

The process of developing a long-term vision for the Spillway was completed over an approximately 9-month time period and led by Macomb County with funding from SEMCOG, Mt. Clemens, Clinton Township, and Harrison Township. This document is intended to serve as a guide and tool for the various agencies to continue to move forward on improvements to the Spillway corridor in a coordinated manner.

STAKEHOLDER COMMITTEE

A Stakeholder Committee was assembled to assist in guiding the development of the long-term vision for the Clinton River Spillway. The Committee included a broad cross-section of elected officials and staff from a variety of agencies. The Committee members met 3 times during the development of the concept plan in 2022 to discuss concerns and desires, and provide feedback on the process and draft vision. In addition, the County had several meetings and discussions with officials and staff from Harrison Township, Clinton Township, and Mt. Clemens to discuss specifics that impact each agency and their residents.

insert stakeholder committee pic

STUDY TIMELINE

Site Walk + Existing Conditions
December 2021

Stakeholder Committee Mtg #1
February 2022

Mtgs with Impacted Organizations
March - July 2022

Online Public Survey (465 responses)
May 2022

Stakeholder Committee Mtg #2
June 2022

Outreach Events
August 2022

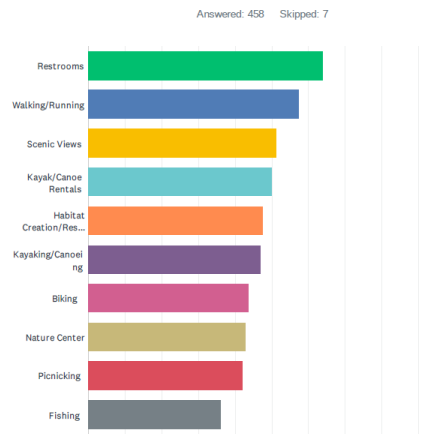
Stakeholder Committee Mtg #3
October 2022

PUBLIC SURVEY

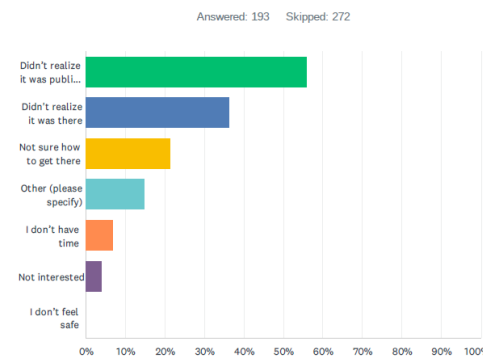
Macomb County and the Stakeholder Committee released an online survey in May 2022 to gather public input related to the Clinton River Spillway to help inform the concept plan. The survey was advertised via press release, social media platforms, and yard signs placed along the Spillway with a QR code link. Over 465 surveys were completed with 37% from residents of Clinton Township, 21% from Harrison Township, 10.5% from Mt. Clemens, and nearly 30% from people that live in other Macomb County communities.

- 31% of respondents had never been to the Spillway while 23% visit 1-3 times per year
- For those that had never been to the Spillway, most didn't realize it was public property, didn't know it was there and/or aren't sure how to get there
- 62% of those that have visited the Spillway arrived by car with 46% using their bike and 34% have walked
- Top 4 activities respondents do on the property are walking, biking, bird watching, fishing. Other activities mentioned include dog walking, kayaking
- Top 5 items respondents indicated interest in along the Spillway include restrooms, walking/running, scenic views, kayak/canoe rentals and habitat restoration. Other items include disc golf, tables/benches, drinking fountains, pickleball courts, level the path, more natural areas, boat access, and a home for the Harrison Twp Library

Q8 Below are some ideas we've heard people might be interested in doing or seeing along the Spillway property. Check the ones you'd like to see further explored by our team.



Q3 If you've never been to the Spillway property, which of the following best describes why? (check all that apply)



The availability of the online survey was publicized on a number of social media pages managed by Macomb County as well as the local communities. In addition, a press release was developed and yard signs with QR code were placed along the Spillway Trail to encourage feedback.



Macomb County Planning & Economic Development
 Don't miss out on this important opportunity to make your voice heard on future land use around the Clinton River Spillway!



Make Macomb Your Home
 May 25 at 10:18 AM
 Only a few days left to complete this survey!
 Think your community needs more parks, trails and other fun recreational opportunities? Make your voice heard! Macomb County has launched a new survey to gather public input on future land use near the Clinton River Spillway. Now through May 31, take the 5 minute

Macomb County had a tent at events in August 2022 to share a draft vision for the Spillway and gather input and feedback.



OUTREACH EVENTS

Once a draft Vision graphic for the Spillway property was developed, Macomb County staff made it available at 2 events in August 2022 to share ideas for the property and solicit feedback. The 2 events were the Touch-A-Truck event held at Harrison Townships Tucker Senior Center (August 6, 2022) and the Shadyside Park Spray Fountain grand opening event (August 19, 2022). In addition to a table size illustration of the draft Vision, participants were asked ‘What Would Bring You Back to the Spillway?’, and they were also asked to place sticker dots on the precedent images that they liked the most.

What Would Bring You Back to the Spillway?

- keep nature
- food and drink vendors would be cool
- name it the Clinton River Spillway Recreation Area
- love parking ideas off of Harper
- kayak launches
- educational boats
- love connection to Neil Reid school
- better signage so people know about it
- improve parking areas so more inviting
- reservable, shaded area for 50-100 people
- bathrooms
- nature center and educational boats
- winery
- need a venue you can rent, bring own food/drinks for parties, showers, reunions
- benches, picnic tables around splash pad and more trees at Shadyside
- barrier from Gratiot at Shadyside
- golf/driving range
- walk out piers/docks for fishing

Most Liked Precedent Images

- kayak/canoe
- playground
- fishing/viewing platform
- educational boat
- tridge bridge
- biking trails
- fox/wildlife/nature
- painted underpass



Place Dot Stickers on Things You'd LOVE to See or Do Along the Spillway



BRANDING + SIGNAGE



ART



HABITAT PROTECTION + RESTORATION

ACTIVE + PASSIVE RECREATION



TRAILS + CONNECTIVITY



SPILLWAY VISION

The long-term vision for the Clinton River Spillway property is to establish it as a regional destination and 'Gateway to the Great Lakes' - ensuring that the integrity of the Spillway is maintained in order to provide flood control while seeking opportunities to address social equity and quality of life, improve water quality and habitat, and increase public use and enjoyment.

The graphics and illustrations on the following pages capture a long-term vision for the public Spillway property. While maintaining the Spillway function as a flood control system remains at the forefront, several additional goals and concepts arose during the development of this Master Plan. Precedent images are included for inspiration and illustrative purposes.

Habitat Protection + Restoration

Considerable effort in recent years has been focused on creating and restoring habitat along the Clinton River Spillway. The Spillway Vision looks to build upon these efforts by:

- seeking opportunities for additional shoreline habitat creation and stabilization including increasing habitat for various waterfowl, wood for fish habitat, bank toe restoration to reduce erosion, boulder clusters and hibernacula for snakes and erosion control, turtle logs, etc
- partnering with federal, state and local environmental agencies to continue to study the condition of the Spillway and adjacent environs
- designing passive and active recreation opportunities that balance public access with environmental protection and stormwater management at the forefront
- managing invasive species and utilizing native species when planting
- creating a fish passage and kayak bypass of the existing Spillway Weir on the northside of the Spillway property including a small viewing area to sit and watch the activity

Create Connections

The Spillway is at the intersection of several existing and proposed regional non-motorized corridors including The Great Lakes Way, Freedom Trail along Metropolitan Parkway, and Gratiot Avenue. The existing Spillway Trail provides connections to these destinations. The Spillway Vision looks to:

- improve the condition of the existing trails
- build additional regional trails (asphalt) and bridges along the Spillway property in order to create a more extensive system on both the north and south sides of the water as well as to downtown Mt. Clemens, George George Park, Metro Beach, Lake St. Clair, and the numerous schools, parks, businesses and neighborhoods nearby
- connect Shadyside, the north side of the Spillway, and the Wellington Crescent area together via a 3-pronged “Tridge” with a Great Lakes Observation Tower and creative/interactive lighting
- create a network of more informal footpaths (crushed stone) to provide access to quieter areas for reflection and wildlife viewing while also providing important connections to adjacent and nearby parks and developments
- explore the potential for an elevated boardwalk as a destination within the wooded area of Shadyside Park and connect into Sleepy Hollow
- elevate the design and safety of road crossings for pedestrians and bicyclists - particularly at Jefferson Avenue, Harper Avenue, and Gratiot Avenue
- ensure coordination amongst various agencies during planning and design of public and private projects in the vicinity of the Spillway so that connectivity to/from the Spillway is at the forefront of discussions

Based on the results of site visits, meetings with stakeholders, and public feedback, several overarching themes developed to guide the development of the vision. These key themes should remain at the forefront of discussions as implementation progresses:

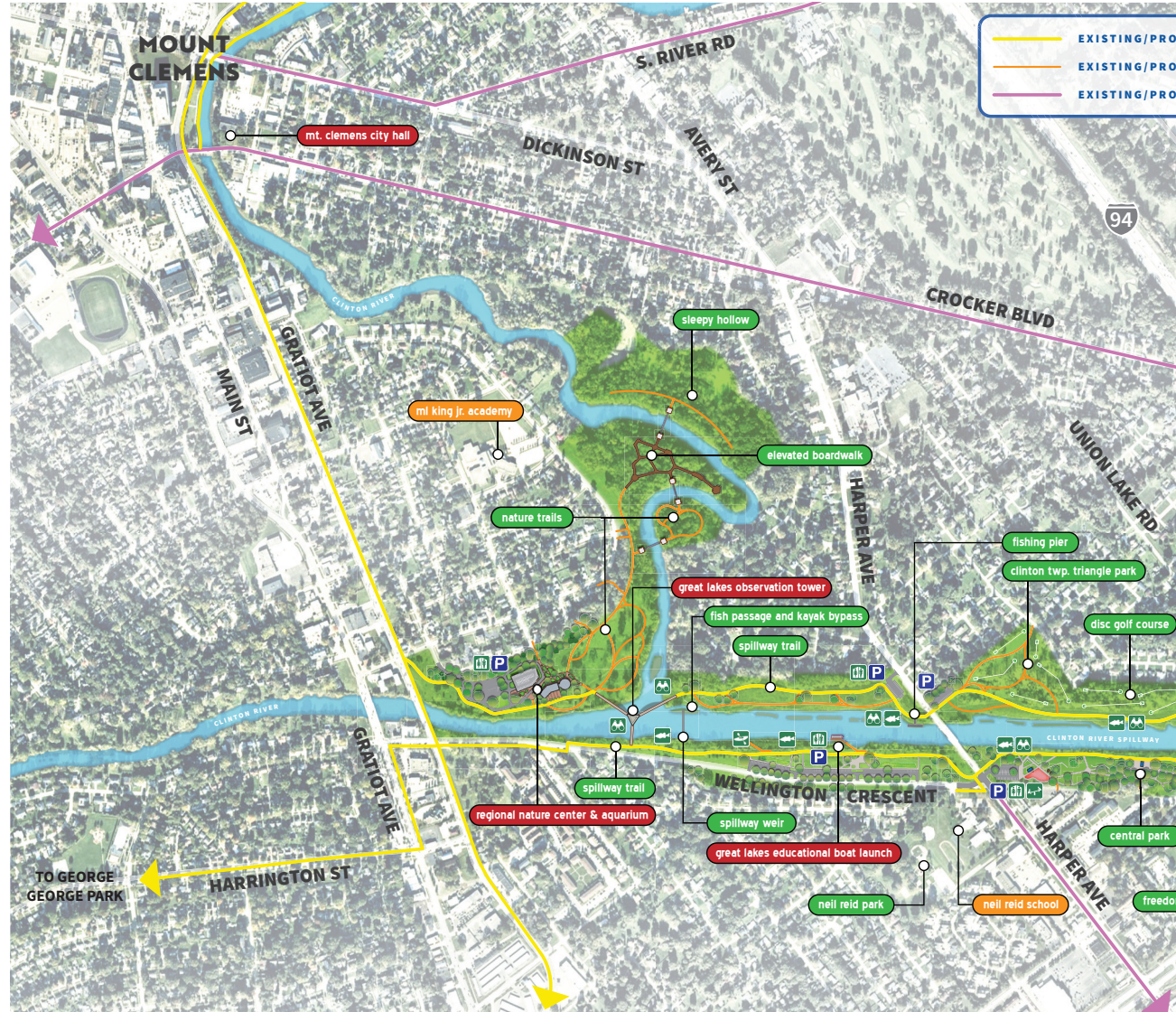
**Sustainable
Equitable
Partnerships
Flood Control
Safety**

In addition, several objectives resonated throughout the process that guided the development of the Spillway Vision:

**Improve Connections
Increase Awareness + Use
Increase Access to Water
Improve Habitat + Water Quality
Create Spaces to Gather and Play
Activate the Space
Improve Aesthetics
Maintain Natural Feel**



SUSTAINABLE • EQUITABLE • PARTN



CONNECTIONS • HABITAT • RE

ERSHIPS • FLOOD CONTROL • SAFE



CREATION • EDUCATION • ART

